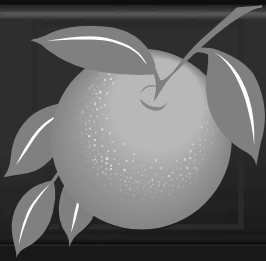




Board of County Commissioners

Public Hearings

October 18, 2016



Spring Isle Planned Development / Land Use Plan (PD / LUP)

Case: CDR-16-02-071

Project Name: Spring Isle PD/LUP

Applicant: Jeffry B. Fuqua, Spring Isle C, LLC

District: 4

Acreage: 224.87 gross acres

Location: Generally located on the east side of Avalon Park Boulevard and south of Waterford Chase Boulevard

Request: To request approval of a Master Sign Plan (MSP) for PD Parcels G, H, and I.

A waiver from Orange County Code Section 31.2-5 is being requested to allow for two (2) multi-tenant signs as depicted on the Master Sign Plan to advertise for property within this PD, in lieu of signs advertising for on-site tenants only.

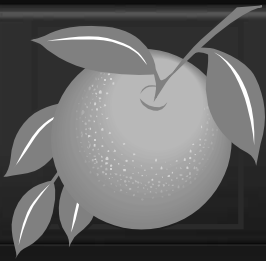


Spring Isle

Planned Development / Land Use Plan (PD / LUP)

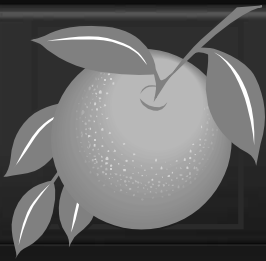
Future Land Use Map





Spring Isle Planned Development / Land Use Plan (PD / LUP) Zoning Map





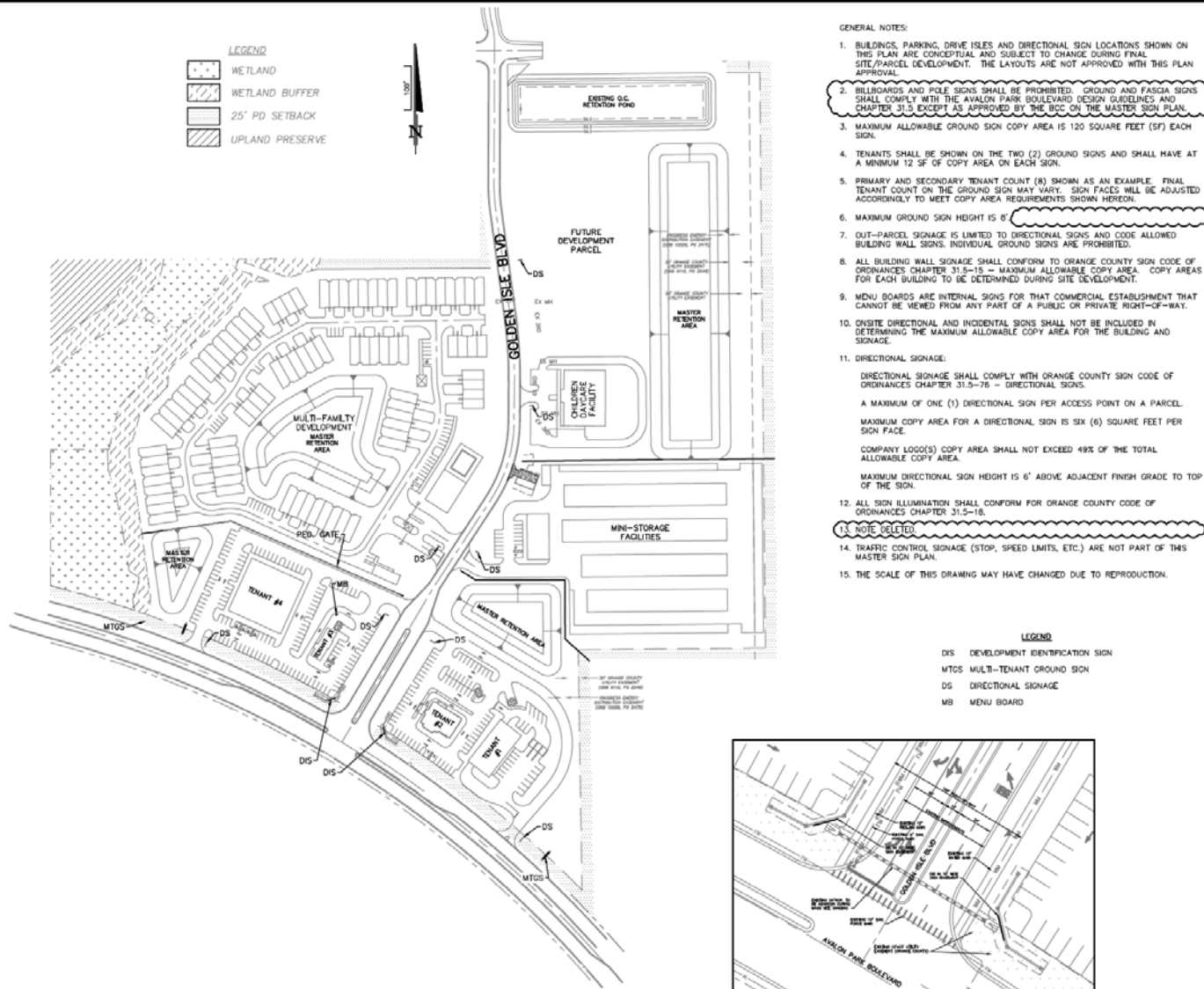
Spring Isle

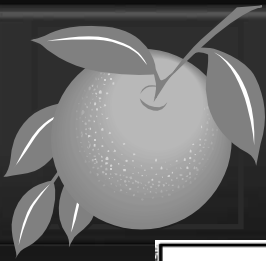
Planned Development / Land Use Plan (PD / LUP)

Aerial Map

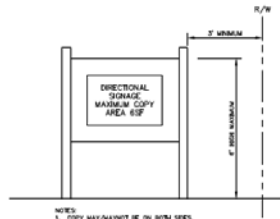


Spring Isle Planned Development / Land Use Plan (PD / LUP)

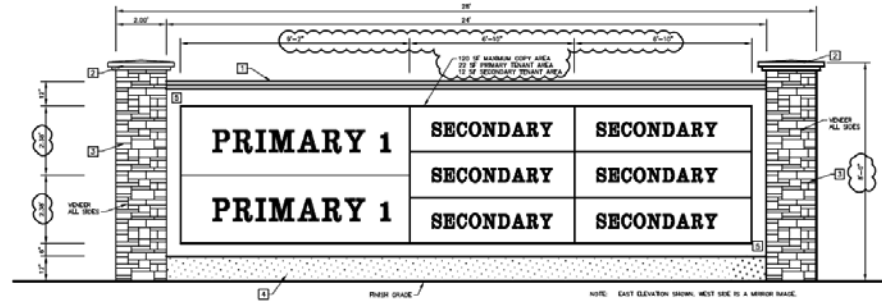




Spring Isle Planned Development / Land Use Plan (PD / LUP)

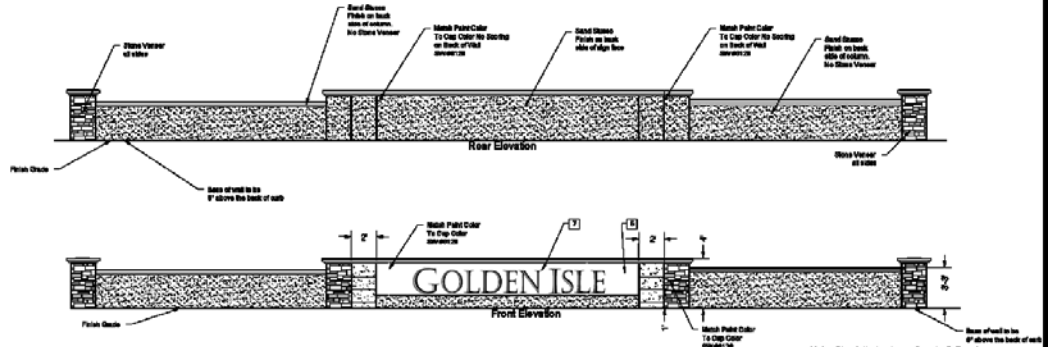
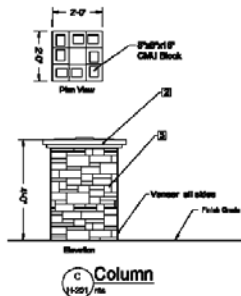
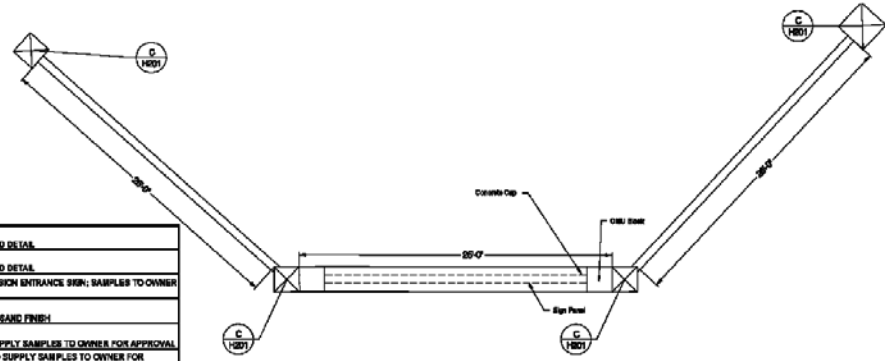


Directional Sign



Multitenant Ground Sign

No.	Item	Manufacturer or Material	Color/Spec # or Description	Notes
1	SPRINKLER WALL CAP	CONCRETE CAP	CONCRETE CAP, COLOR SW 9007	SEE PLANS FOR DIMENSIONS AND DETAIL
2	COLUMN CAP	CONCRETE CAP	CONCRETE CAP, COLOR SW 9007	SEE PLANS FOR DIMENSIONS AND DETAIL
3	STONE VENEER	CULTURED STONE	ALPINE LICKED STONE, HARVEST	TO MATCH GOLDEN ISLE SUBURBAN ENTRANCE SIGN; SAMPLES TO OWNER FOR APPROVAL
4	STUCCO FINISH		PANT COLOR SW 9007	APPLY TO ALL EXPOSED BLOCK, SAND FINISH
5	TILE			BLACK TILE, CONTRACTOR TO SUPPLY SAMPLES TO OWNER FOR APPROVAL
6	SEMI LETTERS			GOLD LETTERS, CONTRACTOR TO SUPPLY SAMPLES TO OWNER FOR APPROVAL



Development Identification Ground Sign



Action Requested

Make a finding of consistency with the Comprehensive Plan (CP) and approve the substantial change to the Spring Isle Planned Development / Land Use Plan (PD/LUP) dated “Received August 9, 2016”, subject to the conditions listed under the DRC Recommendation in the Staff Report.

District 4