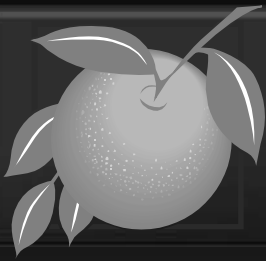




Board of County Commissioners

Public Hearings

November 1, 2016



Storage Units LLC

Planned Development / Land Use Plan (PD/LUP)

Case: LUP-16-03-087

Project: Storage Units LLC PD/LUP

Applicant: Richie Webster, Pro-Tec Construction

District: 2

Acreage: 3.15 gross acres

Request: To rezone 3.15 acres from I-4 and C-1 to PD in order to construct 71,150 square feet of indoor storage uses, including boats, recreational vehicles, and 404 self storage units.

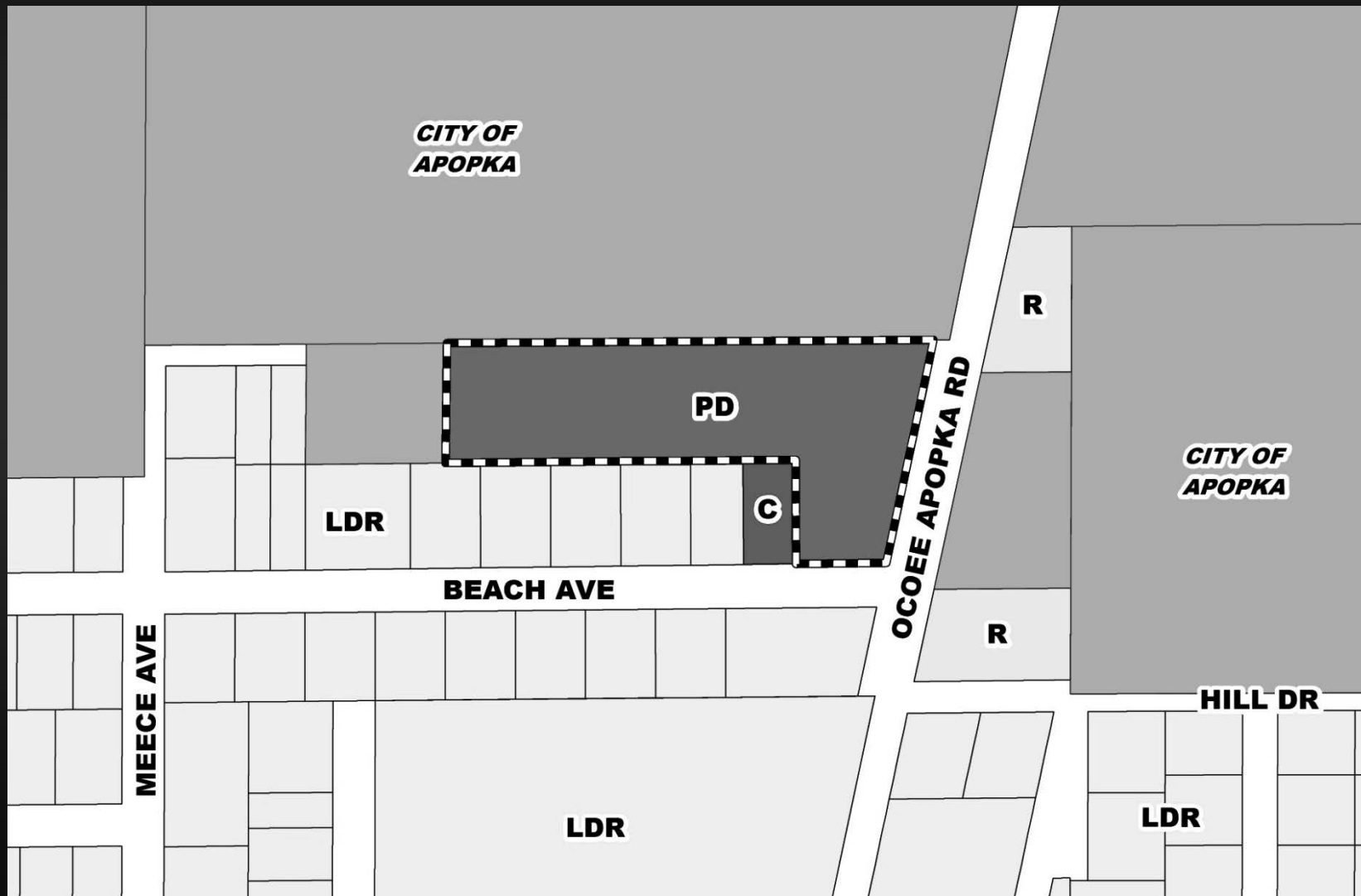
Additionally, two (2) waivers from Orange County Code Section 38-272(3) are being requested to reduce various required setback distances.

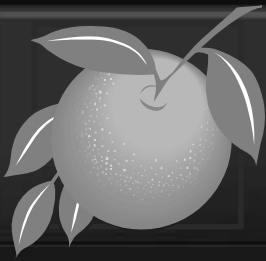


Storage Units LLC

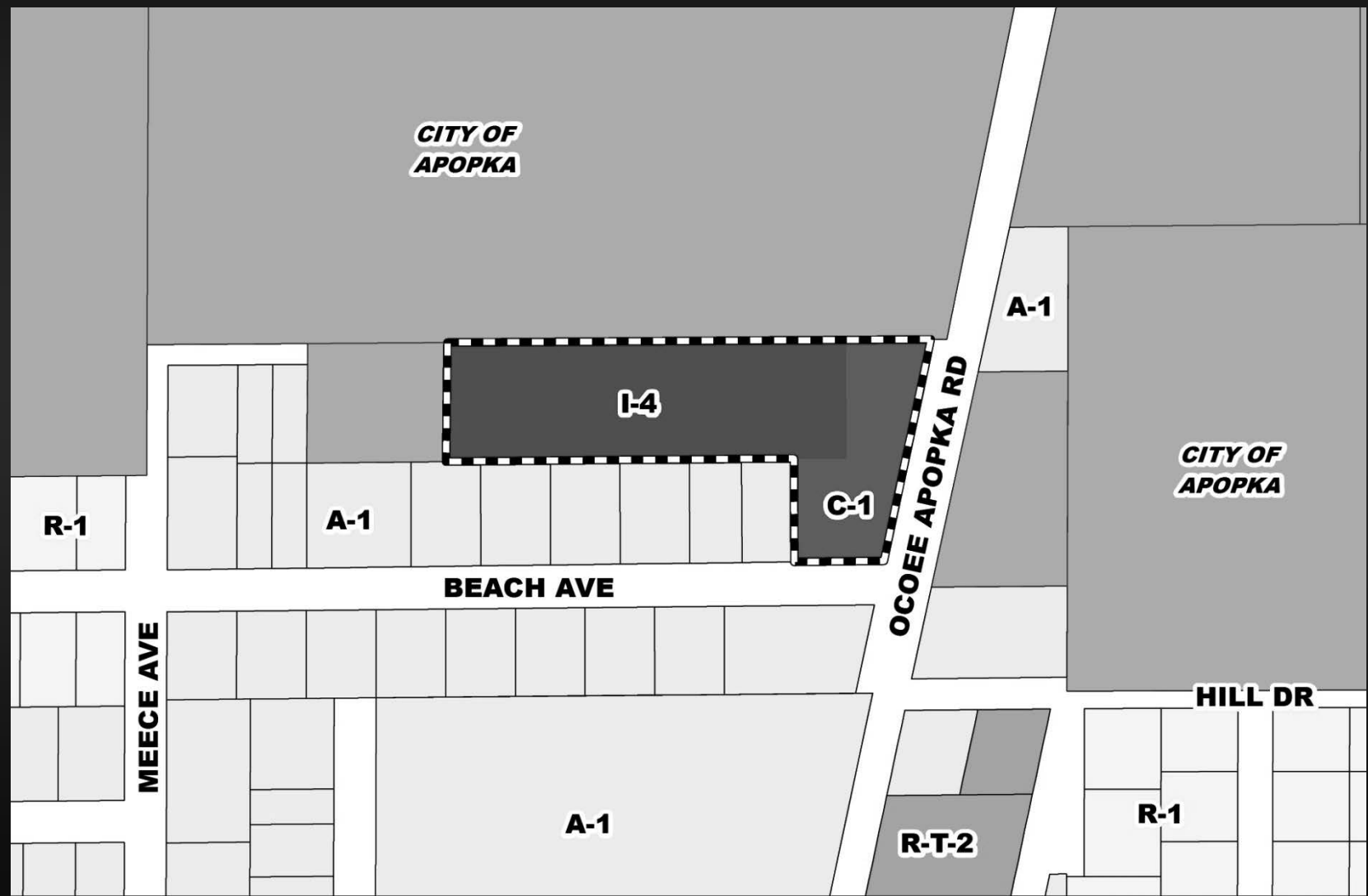
Planned Development / Land Use Plan (PD/LUP)

Future Land Use Map





Storage Units LLC Planned Development / Land Use Plan (PD/LUP) Zoning Map

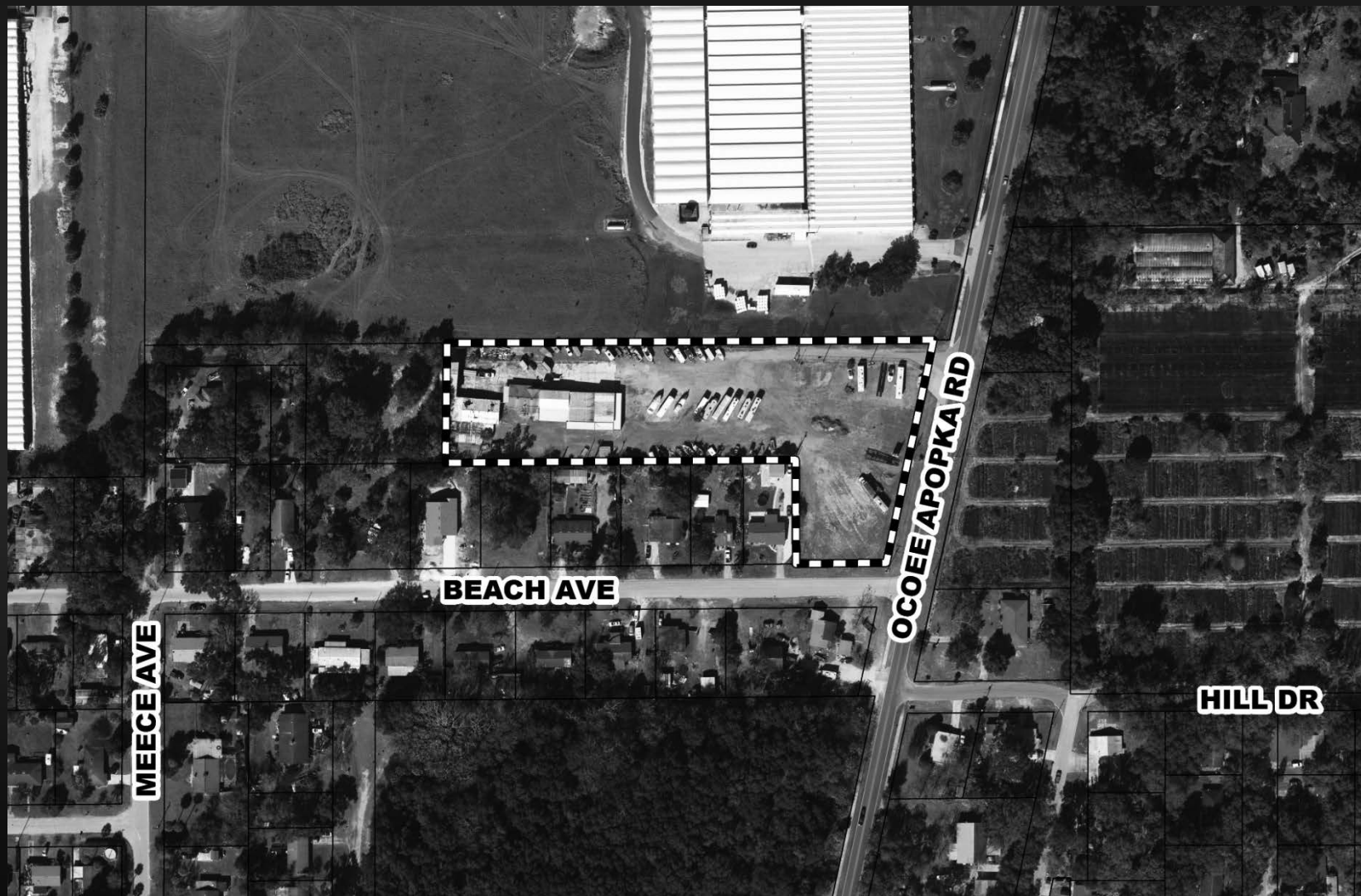


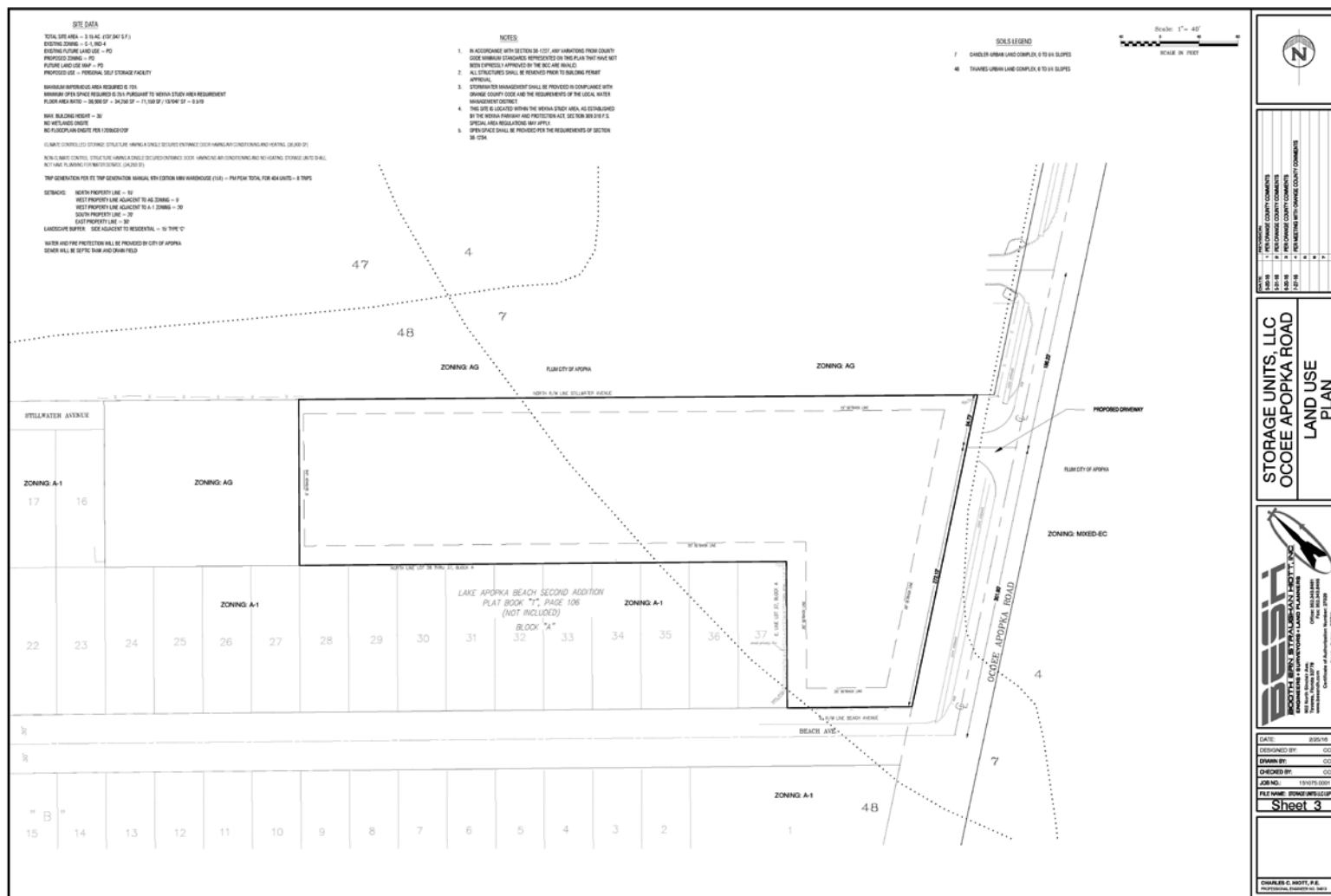
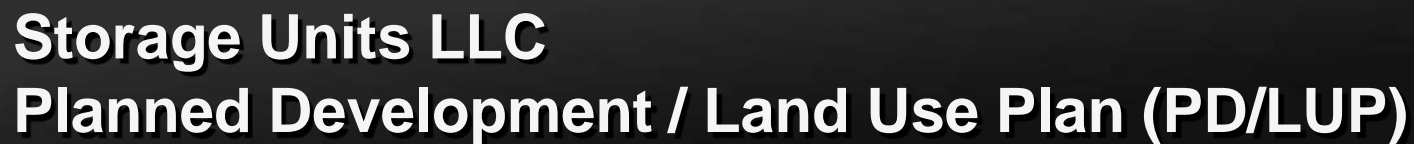


Storage Units LLC

Planned Development / Land Use Plan (PD/LUP)

Aerial Map







Action Requested

Make a finding of consistency with the Comprehensive Plan (CP) and approve the Storage Units LLC Planned Development / Land Use Plan (PD/LUP) dated “Received August 11, 2016”, subject to the conditions listed under the PZC Recommendation in the Staff Report

District 2



Board of County Commissioners

Public Hearings

November 1, 2016