

# UCF/Alafaya Trail Pedestrian Safety Study & Campus Development Agreement

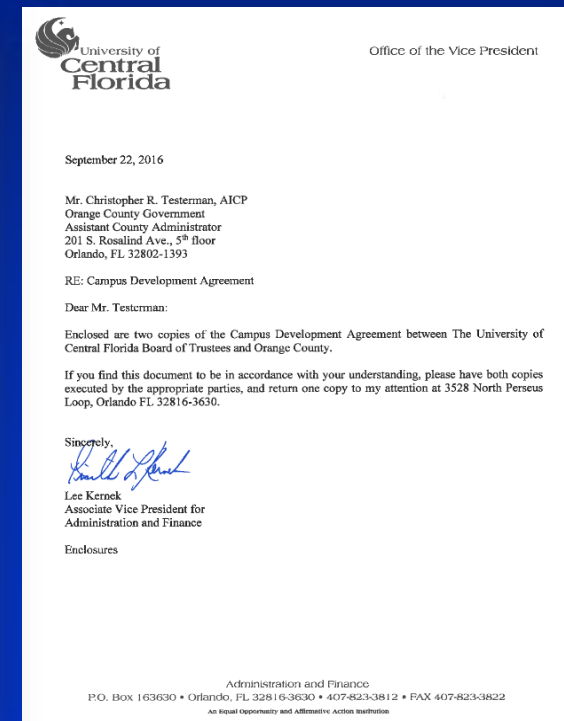
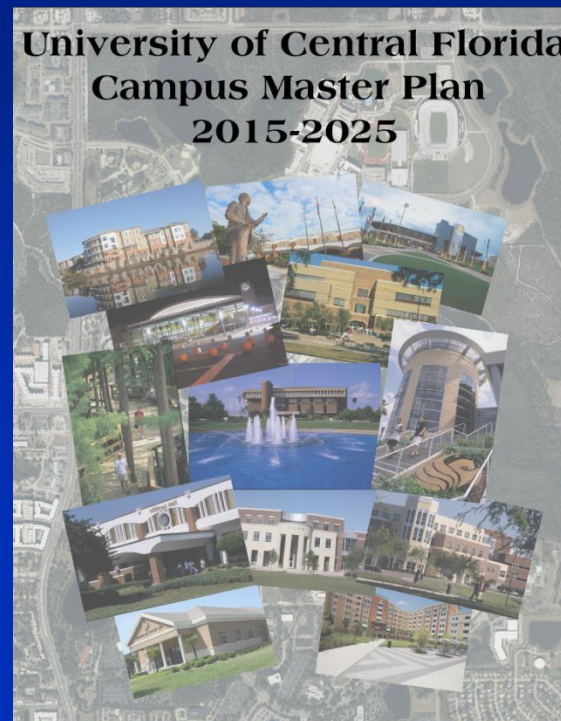
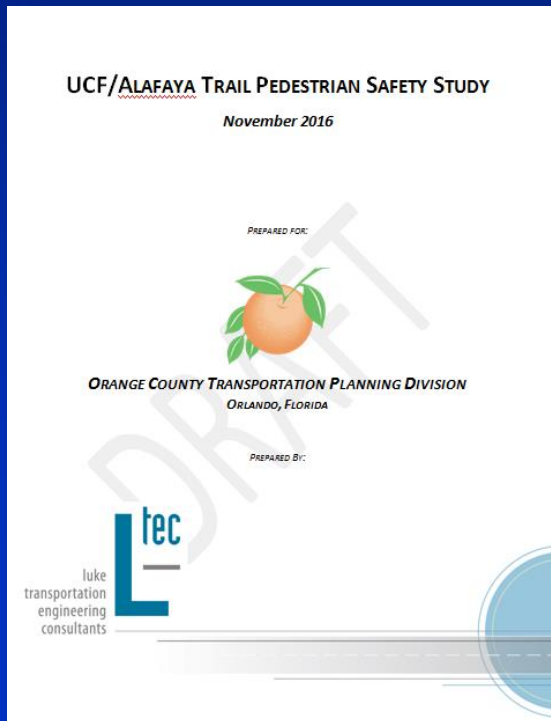
BCC Public Hearing

November 29, 2016



# Presentation Overview

- UCF/Alafaya Trail Pedestrian Safety Study
- Campus Master Plan
- Campus Development Agreement
- Action Requested

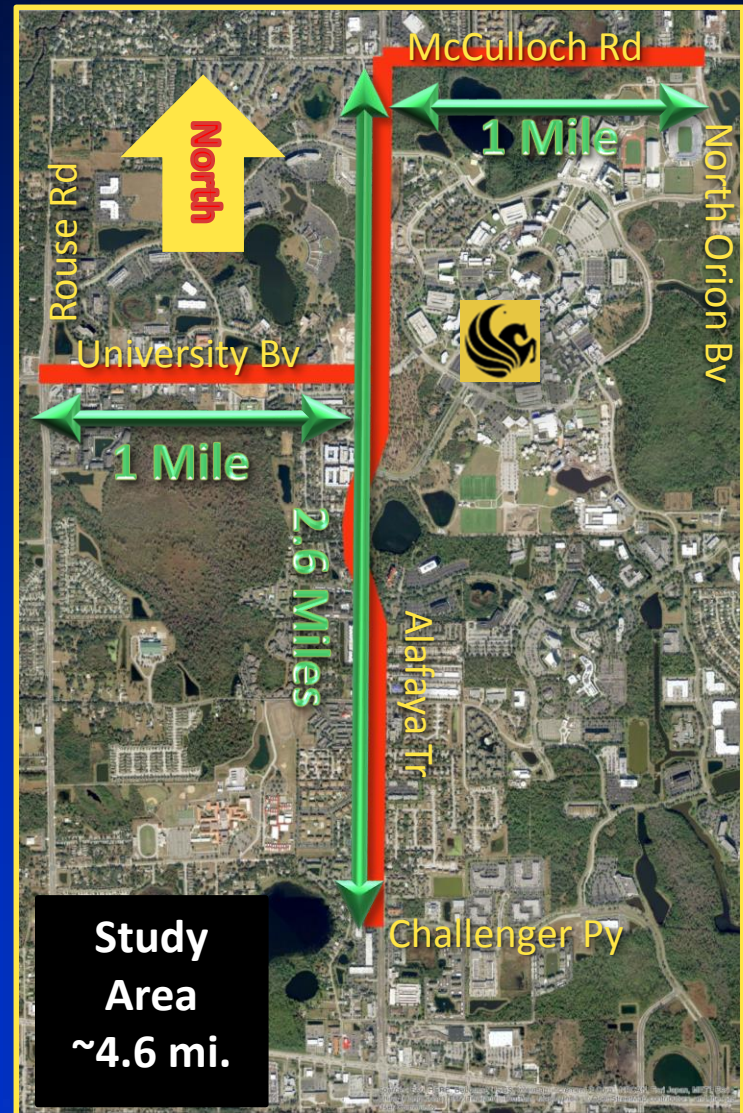


# UCF/Alafaya Trail Pedestrian Safety Study

## Goal

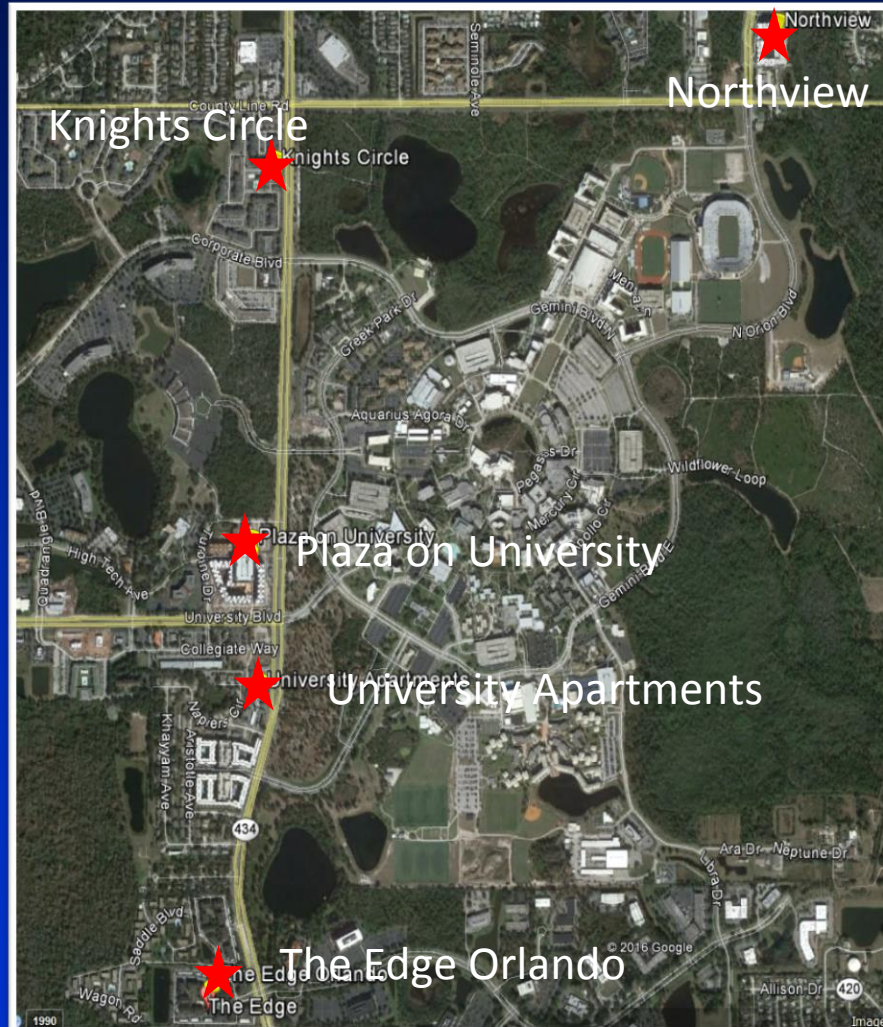
Identify bike/pedestrian  
safety enhancements/  
improvements

- Public involvement
- Data collection and analysis
- Vision for Corridor
- Recommendations for Improvements



# UCF/Alafaya Trail Pedestrian Safety Study

## Public Involvement






# UCF/Alafaya Trail Pedestrian Safety Study

## Data Collection and Analysis

Crash History (2006-2014) Total Crashes: 259	
Highest location frequency	Alafaya Tr (74%)
Crashes w/ Injuries	207 (80%) <ul style="list-style-type: none"> <li>• 59% Bikes</li> <li>• 41% Ped</li> </ul>
Crashes w/ Fatalities	8 (.03%)

Alafaya Tr 4 times  
Statewide Pedestrian  
Crash Average (crash  
rate per 100 MVM)

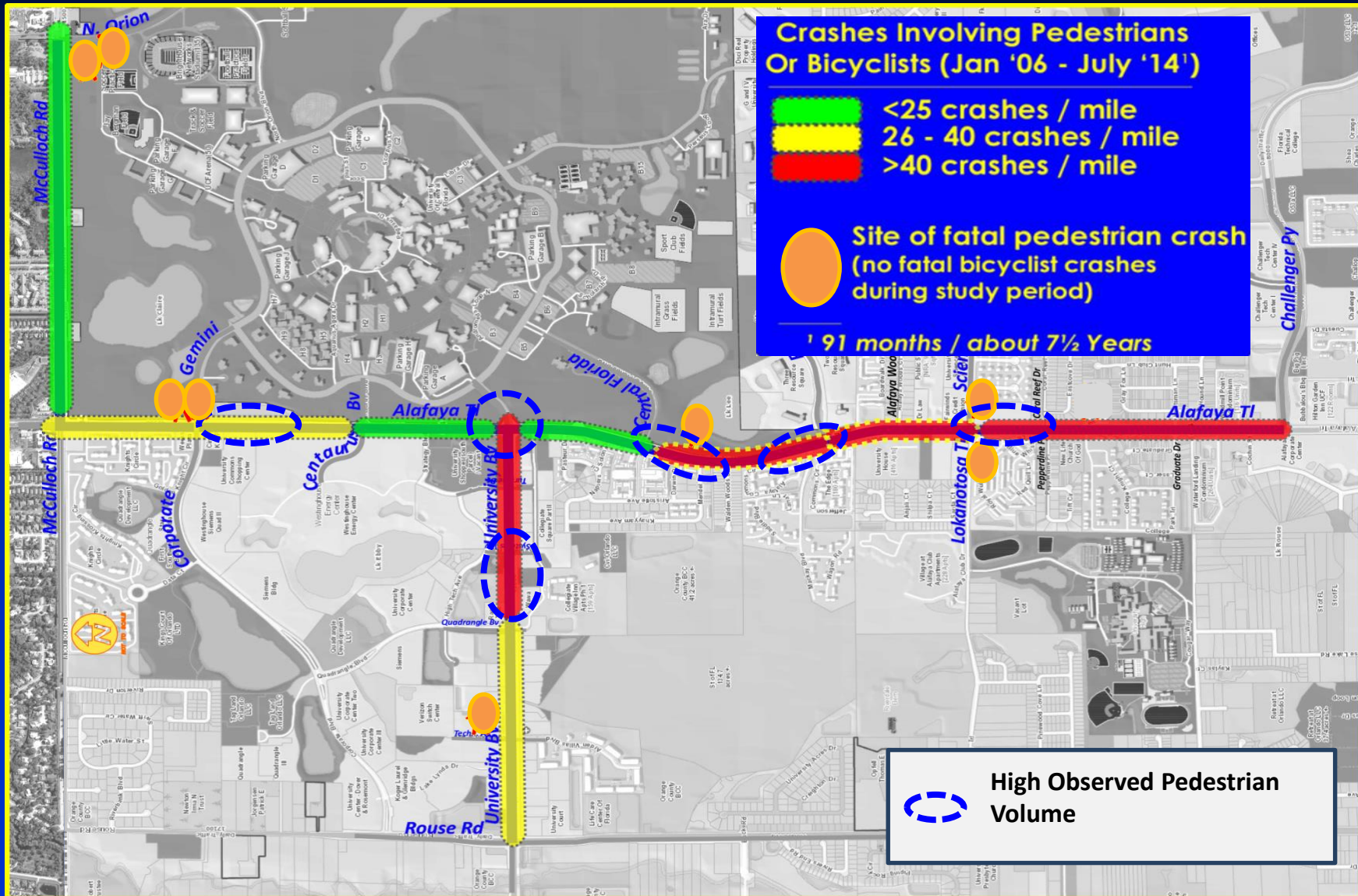
Pedestrian/Bicycle Volume Observations (24 Zones over 3 days)	
All Locations	All 3 Days
# Cross Street Peds	291
# Cross Driveway Peds	12,094
# Cross Street Bikes	9,967
# Cross Driveway Bikes	2,240
% Violation Cross Street Bikes & Peds	36.6%
% Violation Cross Driveway Bikes & Peds	1.1%

<div>  <div>Posted Speed vs. Actual Speed</div> </div>		
Observed vehicle speeds (in mph) 85% Percentile		
	All Days	Fri/Sat Night
Alafaya	53	45/43
University	49	38/35
McCulloch	53	49/46

Average: 4 to 9 mph  
over posted speed

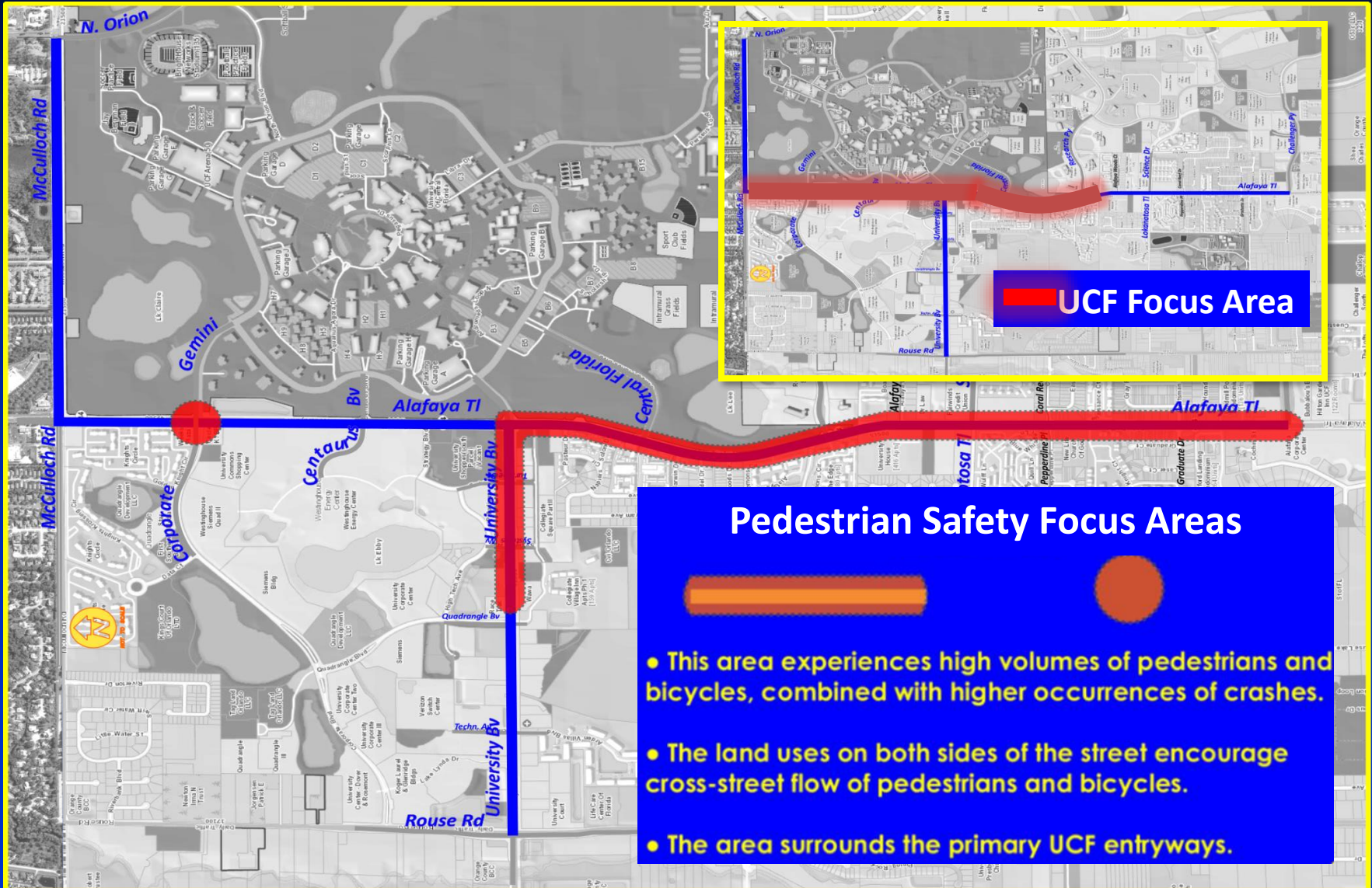


# UCF/Alafaya Trail Pedestrian Safety Study





# UCF/Alafaya Trail Pedestrian Safety Study



# UCF/Alafaya Trail Pedestrian Safety Study

## Vision for Corridor Transformation



**Pedestrian Fencing  
in medians**



**Comfortable, wide  
sidewalks**



**Pedestrian-scale  
lighting**



**Mid-block crosswalks  
& textured pavement**



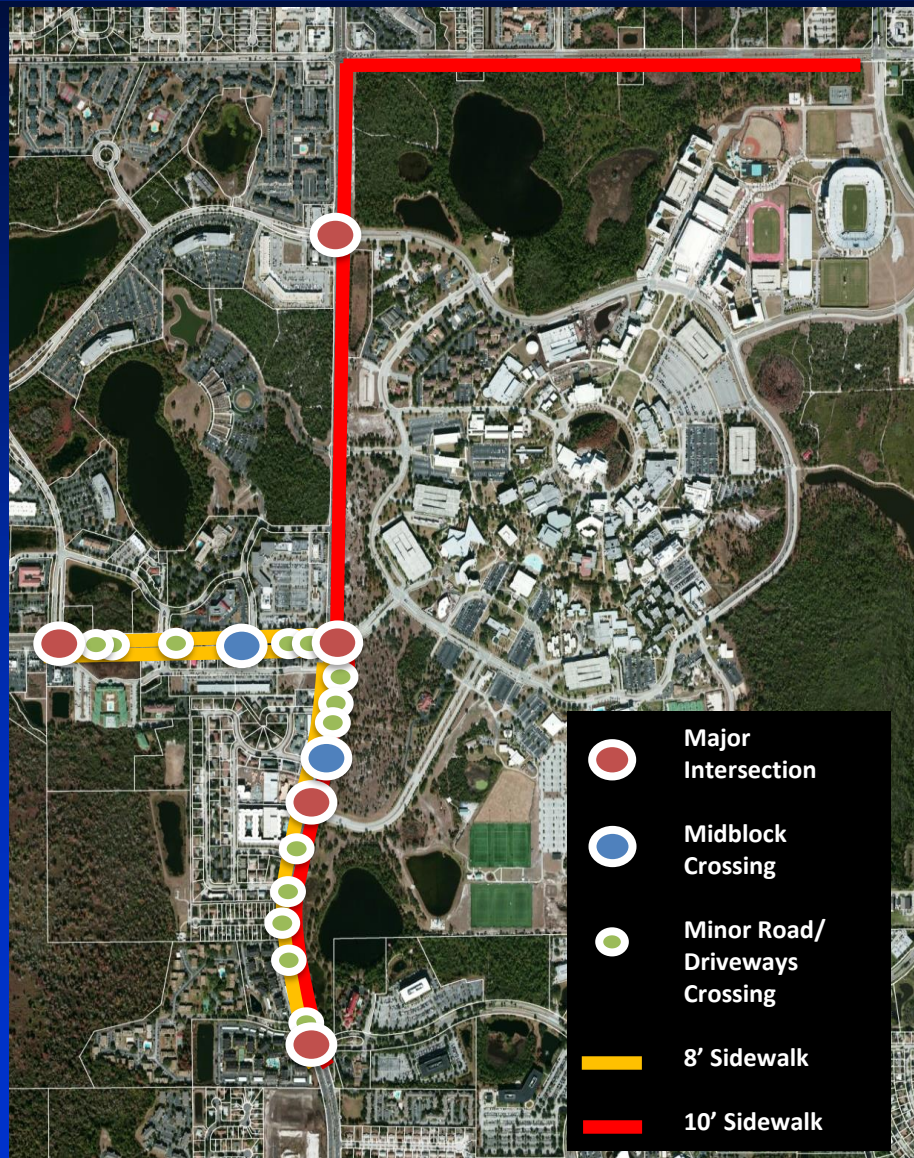
**Smaller turn radii and  
larger ped. landings**



**Wider and marked  
bike lanes**



# UCF/Alafaya Trail Pedestrian Safety Study



## Recommended Improvements

- Enhancements at 5 Major Intersections
- Signalized Midblock Crosswalks
- Enhancements at Minor Roads/Driveways
- 10' Pedestrian/Bike Path
- General Safety Enhancements
  - Pedestrian fencing
  - Pedestrian-scale lighting
  - Landscaping
  - UCF Branding/Signage
  - Wider sidewalks



# UCF/Alafaya Trail Pedestrian Safety Study

## Recommended Improvements Plan – Phasing Plan

### Phase I (Along UCF Frontage)

- UCF Branding, Signage and Way finding
- Pedestrian fencing (based on Design/Engineering)
- Landscaping between sidewalk and edge of curb
- Intersection enhancements (Alafaya Trl at University Bv)
- Pedestrian-scale lighting
- 10-foot pedestrian/bicycle path (east side of Alafaya Trail)
- Signalized mid-block crosswalks with textured /colored pavement
- Safety education (e.g. UCF Student Orientation)

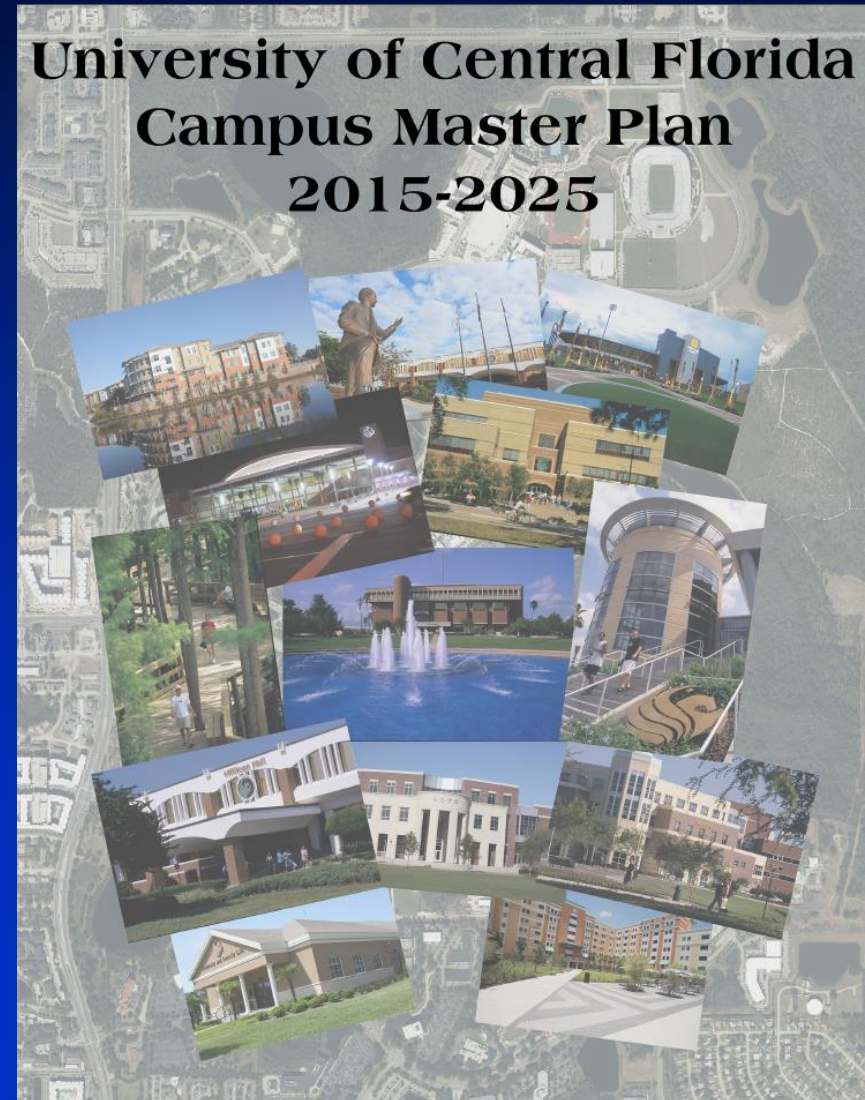
### Phase II

- 8' sidewalks along the roadway
- Textured crosswalks at minor roadways and driveways
- Additional landscaping (outside UCF area)
- Intersection enhancements at remaining Major Intersections
- Pedestrian Lighting outside of UCF area



# University of Central Florida Campus Master Plan 2015-2025

- Required by Section 1013.30, F.S.
- Adopted November 2010
- 17 Elements
- Requires Campus Development Agreement (CDA)
  - ✓ Two public hearings required (per s. 163.3225, F.S.)





# University of Central Florida Campus Development Agreement

- **Impacts:** Alafaya Trail and University Blvd.
- **Improvements to Eliminate Deficiencies:** Partnership Projects
- **Duration:** Effective upon execution and shall remain in effect for 5 years, unless extended by mutual consent



Office of the Vice President

September 22, 2016

Mr. Christopher R. Testerman, AICP  
Orange County Government  
Assistant County Administrator  
201 S. Rosalind Ave., 5<sup>th</sup> floor  
Orlando, FL 32802-1393

RE: Campus Development Agreement

Dear Mr. Testerman:

Enclosed are two copies of the Campus Development Agreement between The University of Central Florida Board of Trustees and Orange County.

If you find this document to be in accordance with your understanding, please have both copies executed by the appropriate parties, and return one copy to my attention at 3528 North Perseus Loop, Orlando FL 32816-3630.

Sincerely,

Lee Kernek  
Associate Vice President for  
Administration and Finance

Enclosures



# UCF Campus Development Agreement

## Partnership Projects: UCF Study Phase I

Partnership Projects from Safety Study	Est. Cost*	Timeframe
1. Provide a 5-foot right-of-way beyond existing FDOT right-of-way	\$286,867	Agreement in place no later than Design
2. Design/construct first phase of Gateway Project at entrance to campus at University Bv and Alafaya Tr (consistent with Study recommendations for signage, lighting, pedestrian landing areas, turn radii, and landscaping)	\$1,900,000	Designed/constructed concurrent to County Capital Improvement Schedule
3. Pay for installation of 2 signalized mid-block crossings (one on Alafaya Tr near Salon and one on University Bv near Turbine)	\$517,000	Funded upon completion of Design
4. Install pedestrian-scale lighting within right-of-way along UCF frontage of Alafaya Tr	\$75,000	Funded as invoiced by Duke Energy
5. Contribute funds to traffic signalization changes at Alafaya Tr and University Bv	Not to Exceed (NTE) \$100,000	Funded upon completion of Design
6. Provide way-finding and signage on Alafaya Tr and University Bv that UCF determines desirable for branding (with County and FDOT approval for content and stylization)	NTE \$50,000	Funded upon completion of Design
7. Develop/provide Educational Programs related to pedestrian safety	NTE \$167,000 per year	Funded yearly as needed (recurring)
8. Pay monthly rental lease to Duke Energy (maintenance/utilities of lighting)	NTE \$25,000 per year	Funded as invoiced by Duke Energy (recurring)

\* Estimated Totals: \$2,928,867 (one time) and \$192,000 (annual recurring)



# Action Requested

- **Request approval of the UCF/Alafaya Trail Pedestrian Safety Study findings and a finding of consistency of the study recommendations with the Comprehensive Plan**
- **Request approval of the UCF Campus Development Agreement entered into pursuant to Section 1013.30, Florida Statutes**