



Interoffice Memorandum

December 22, 2016

TO: Mayor Teresa Jacobs
and Board of County Commissioners

FROM: Mark V. Massaro, P.E., Director, Public Works Department

CONTACT PERSON: Ruby Dempsey Rozier, Manager
Traffic Engineering

PHONE NUMBER: (407) 836-7890

SUBJ: **Installation of Traffic Control Devices and "No Parking" signs in Reserve at Sawgrass - Phase 5**

Our staff recommends that the following traffic control devices be installed in Reserve at Sawgrass - Phase 5:

Install "STOP" signs on:

Island Green Way at Prairie Plantation Way
Prairie Reserve Boulevard at Prairie Plantation Way
Palmetto Groves Way (west leg) at Prairie Reserve Boulevard
Palmetto Groves Way (east leg) at Prairie Reserve Boulevard

The Fire Marshal recommends that the following "No Parking" signs be installed in Reserve at Sawgrass - Phase 5:

Install "NO PARKING" signs on:

Prairie Reserve Boulevard
Palmetto Groves Way
Island Green Way

Action Requested: Approval of Traffic Control Devices and "No Parking" sign installations in Reserve at Sawgrass - Phase 5. District 4.

MVM/RDR/AHW/nad

Attachments

RESERVE AT SAWGRASS – PHASE 5

Situated in Section 19, Township 24 South, Range 30 East

Orange County, Florida

DISTRICT # 4

STOP/STREET

<u>(1)</u>	(Ft E)	on Island Green Way at Prairie Plantation Way	00 00
<u>(2)</u>	(Ft E)	on Prairie Reserve Boulevard at Prairie Plantation Way	00 00
<u>(3)</u>	(Ft N)	on Palmetto Groves Way (west leg) at Prairie Reserve Boulevard	00 00
<u>(4)</u>	(Ft N)	on Palmetto Groves Way (east leg) at Prairie Reserve Boulevard	00 00

NO PARKING with arrows

- | | |
|-------------------|--|
| <u>(5)</u> | on Prairie Reserve Boulevard from Prairie Plantation Way
extending east to Stone Bark Trail on the north side |
| <u>(6)</u> | on Palmetto Groves Way (west leg) from Prairie Reserve
Boulevard extending east and south to Prairie Reserve
Boulevard on the side south and west sides |
| <u>(7)</u> | on Island Green Way from Prairie Plantation Way extending
east and north to Pine Gate Trail on the south and east sides |

ahw/

5/19/2016

Situated in Section 19, Township 24 South, Range 30 East
Orange County, Florida

Legal Description

A portion of Section 18, Township 24 South, Range 30 East, Orange County, Florida, being more particularly described as follows:

[illegible]

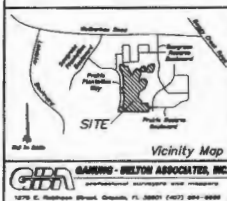
Containing 29.53 ounces, more or less.

Driver's Age:

1. Hearings are based on the east line of the Northeast 1/4 of Section 19, Township 24 South, Range 30 East, Orange County, Florida, as having an assumed bearing of N 03°21'16" E.

W.H. (Agent, Agent)
W.H. (Manager)
F.H. (Manager, Study, Manager)

- [illegible]



CERTIFICATE OF SURVEYOR

This plot was prepared under my direction and supervision.
This plot complies with all of the survey requirements of
Chapter 193, Florida Statutes.

10-15-65
R. CLAYTON GARDNER
Date
LS 4936
Surveyor's Name
Surveyor's Registration Number
GARDNER-BELTON ASSOCIATES
LB 7194
Legal Entry's Name
Legal Entry's Cert. Of Auth. No.
1275 E. RICHMOND ST.
Legal Entry's Address

CERTIFICATE OF COUNTY COMPTROLLER

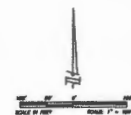
I HEREBY CERTIFY that the foregoing plot was
recorded in the Orange County Official Records on
10-22-15 as File No. 20100552798

County Comptroller to and for Orange County, Florida

BY *J. Hotalero*

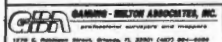
COUNTY COMPTROLLER
SEAL

Situated in Section 19, Township 24 South, Range 30 East
Orange County, Florida

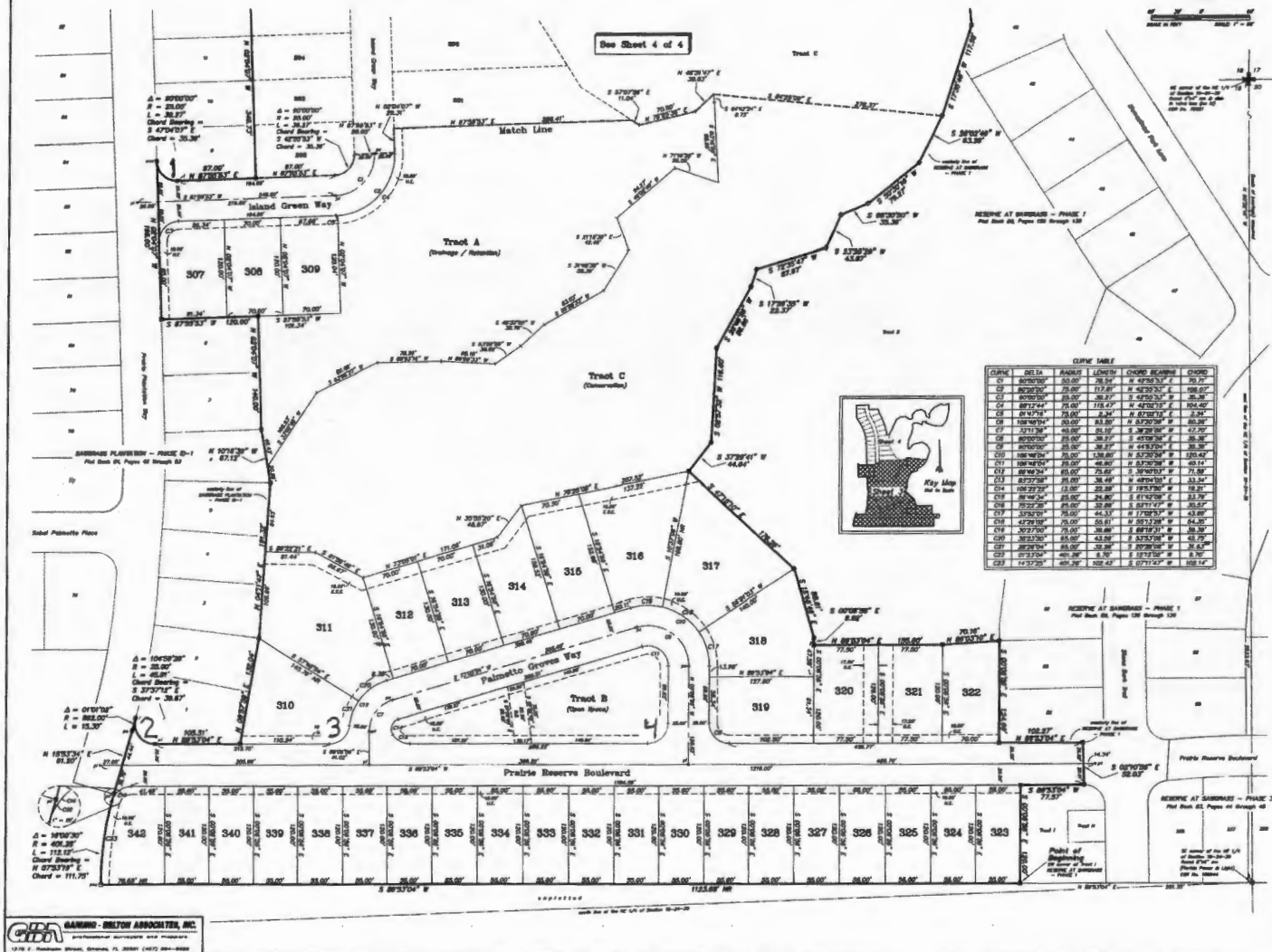


- [illegible]

* The properties delineated on this plot are subject to aircraft noise that may be objectionable.



Situated in Section 19, Township 24 South, Range 30 East
Orange County, Florida



Sheet 3 of 4 PLAT BOOK 87 PAGE 28



NO PARKING

RESERVE AT SAWGRASS - PHASE 5Situating in Section 19, Township 24 South, Range 30 East
Orange County, Florida

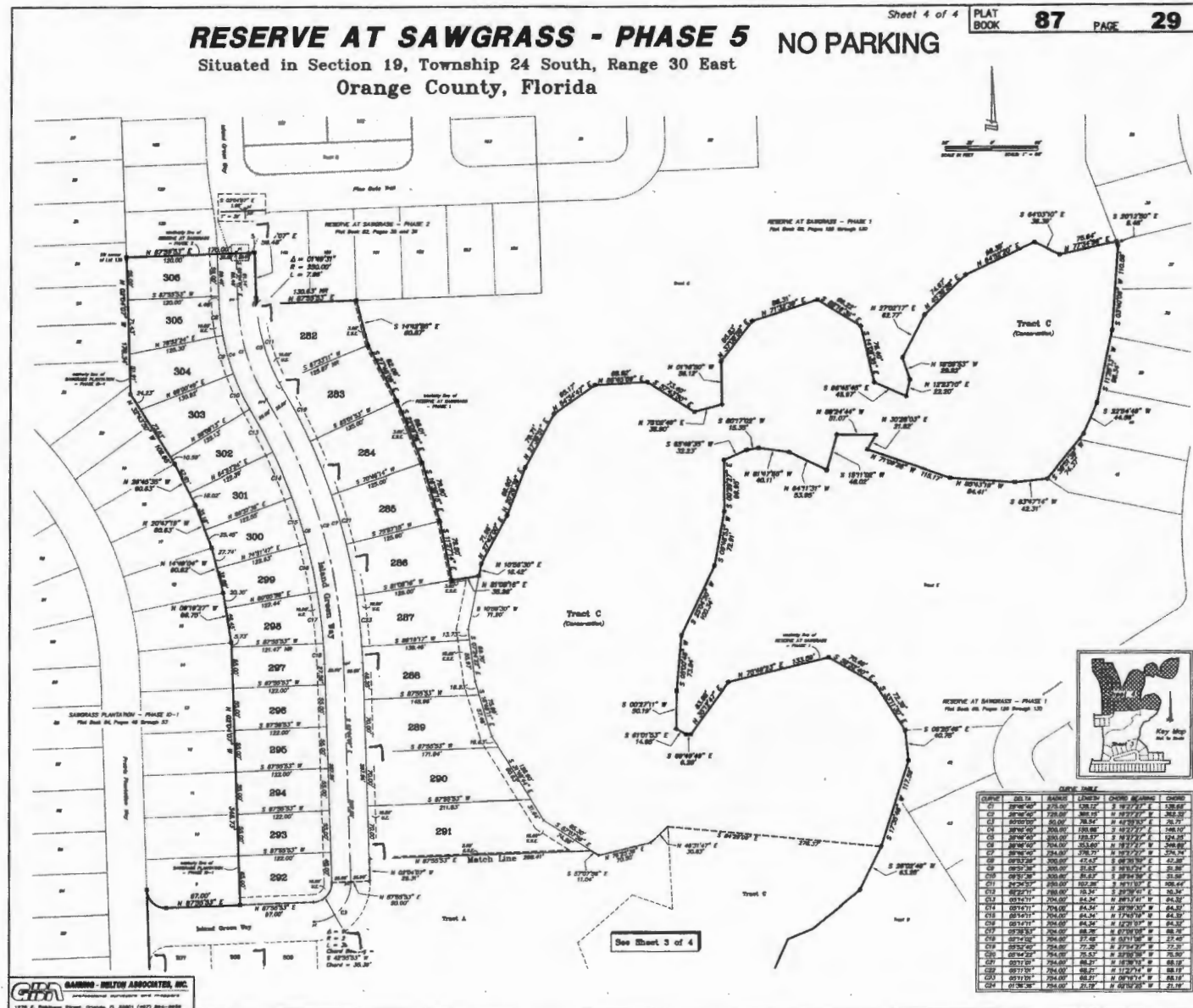
Sheet 4 of 4

PLAT
BOOK

87

PAGE

29



NO PARKING