



Board of County Commissioners

Public Hearings

January 24, 2017



Ruby Lake PD / Ruby Lake Lot 3 Preliminary Subdivision Plan (PSP)

Case: CDR-16-05-192

Project Name: Ruby Lake PD / Ruby Lake Lot 3 PSP

Applicant: Adam Smith, VHB, Inc.

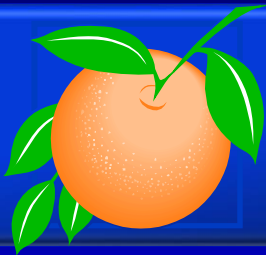
District: 1

Acreage: 157.90 gross acres (entire PSP)

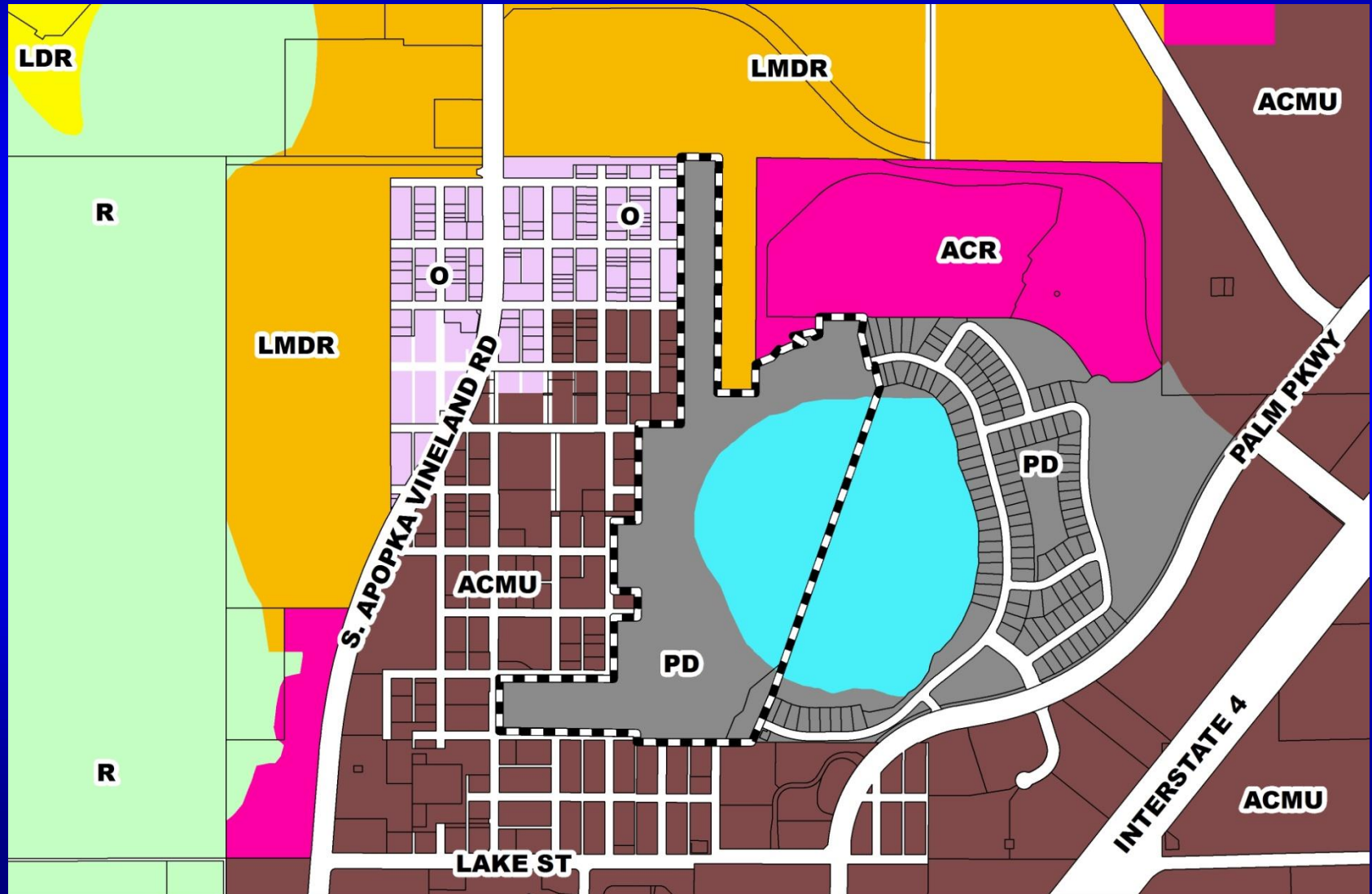
Location: West of Palm Parkway / North of Lake Street

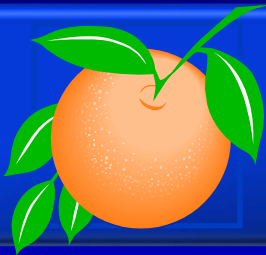
Request: To update the Phase 2 road sections and add one (1) single-family residential lot within Phase 2 due to pond revisions.

Additionally, one (1) waiver from Orange County Code Section 34-171(7) is being requested to allow for a sidewalk on only the east side of Street “E” in lieu of both sides.

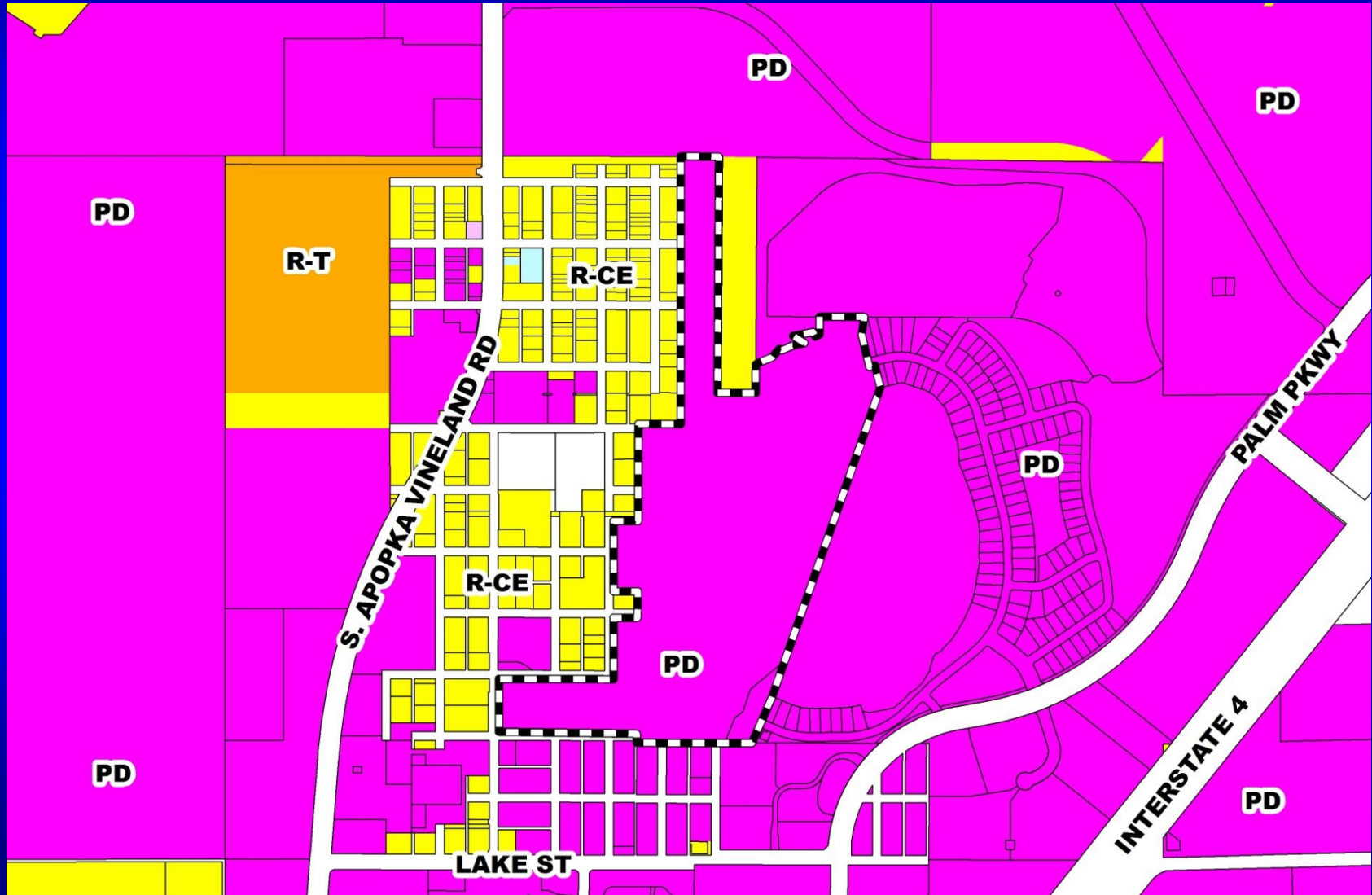


Ruby Lake PD / Ruby Lake Lot 3 Preliminary Subdivision Plan (PSP) Future Land Use Map



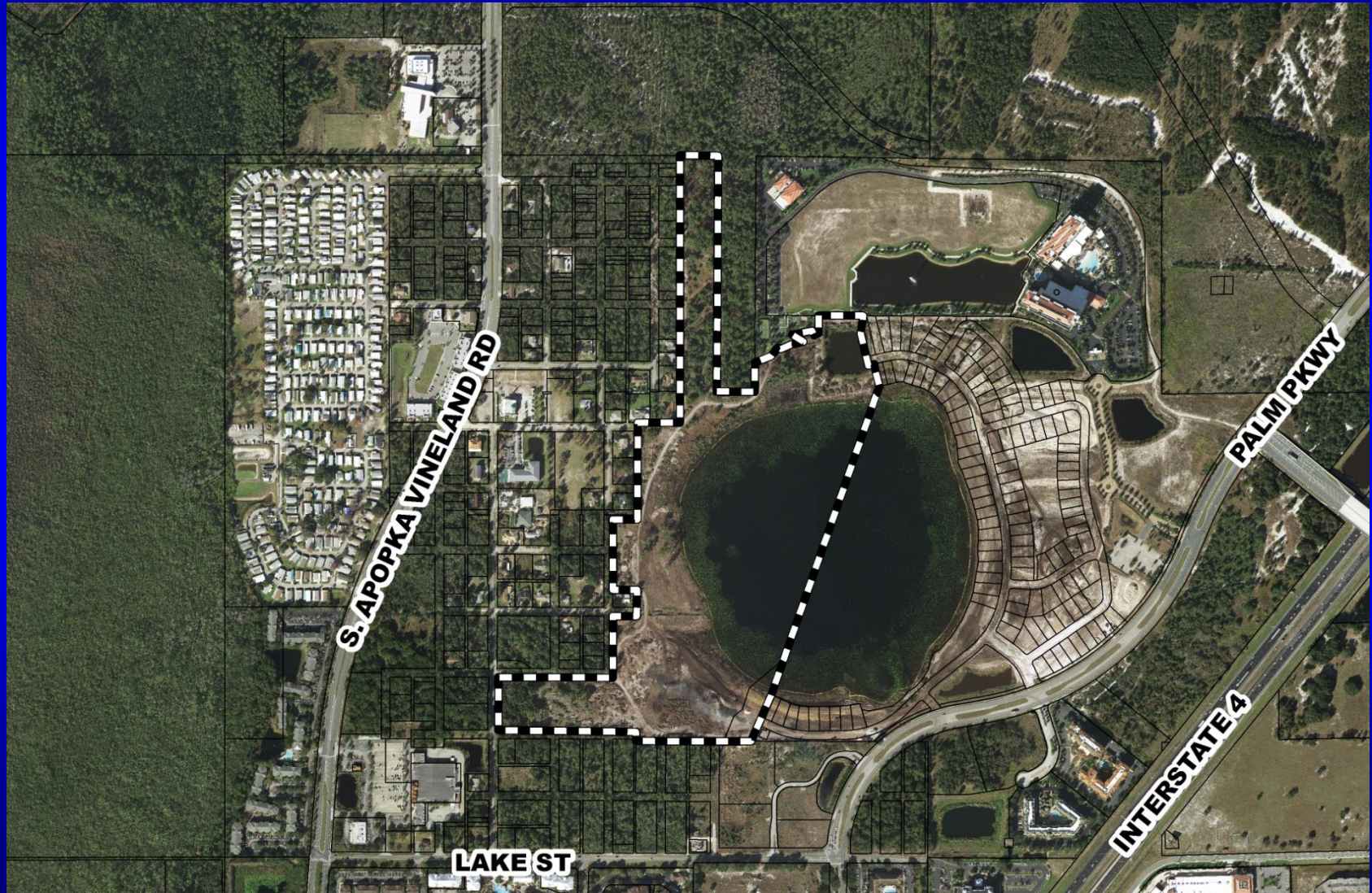


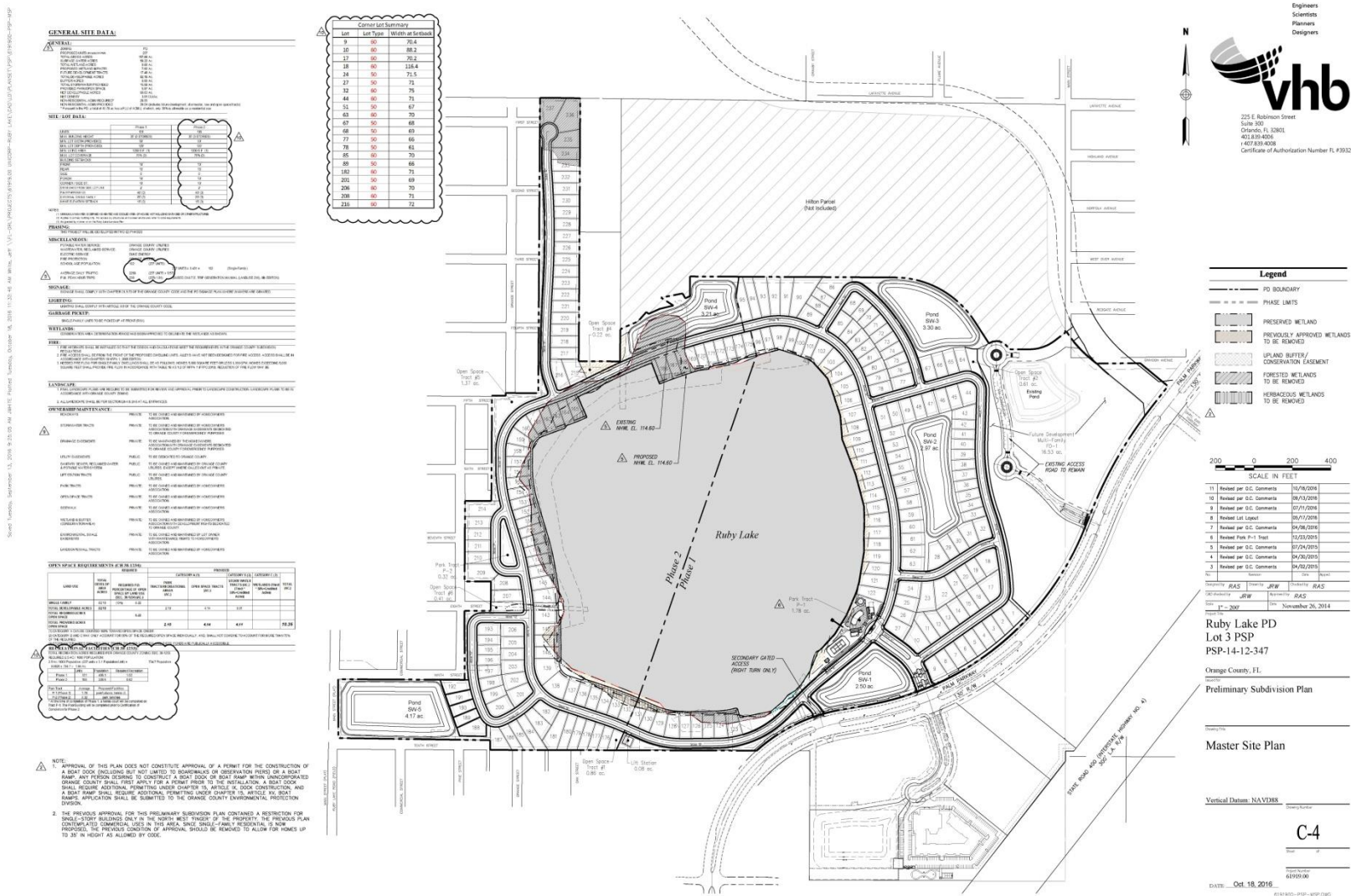
Ruby Lake PD / Ruby Lake Lot 3 Preliminary Subdivision Plan (PSP) Zoning Map





Ruby Lake PD / Ruby Lake Lot 3 Preliminary Subdivision Plan (PSP) Aerial Map







Action Requested

Make a finding of consistency with the Comprehensive Plan (CP) and approve the Ruby Lake PD / Ruby Lake Lot 3 Preliminary Subdivision Plan dated “Received October 21, 2016”, subject to the conditions listed under the DRC Recommendation in the Staff Report.

District 1



Board of County Commissioners

Public Hearings

January 24, 2017