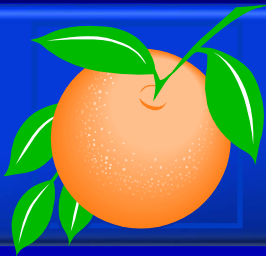




Board of County Commissioners

Public Hearings

January 24, 2017



Eagle Creek PD / Parcel N South Commercial Center Preliminary Subdivision Plan (PSP)

Case: CDR-16-06-209

Project Name: Eagle Creek PD / Parcel N South Commercial Center PSP

Applicant: Adam Smith, VHB, Inc.

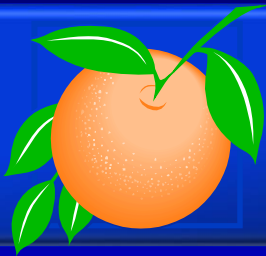
District: 4

Acreage: 23.83 gross acres

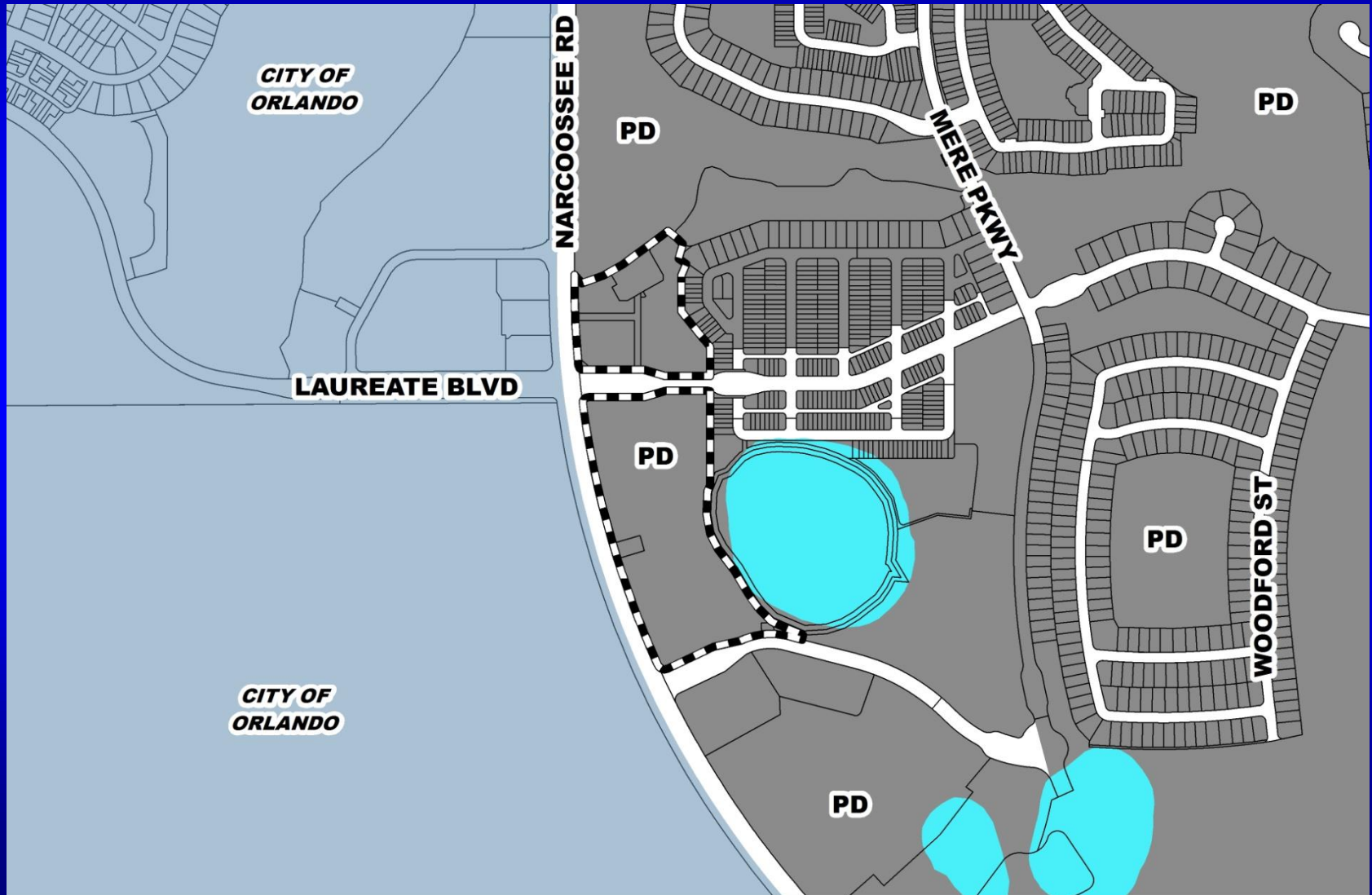
Location: North and South of Eagle Creek Center Boulevard / East of Narcoossee Road

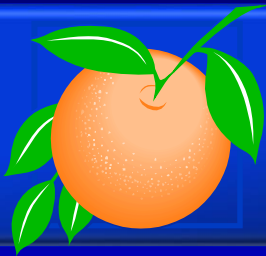
Request: To reconfigure three (3) commercial lots and associated access tracts into eleven (11) commercial lots and associated access tracts.

Additionally, the request results in a reduction of commercial entitlements from 172,500 square feet to 163,000 square feet.

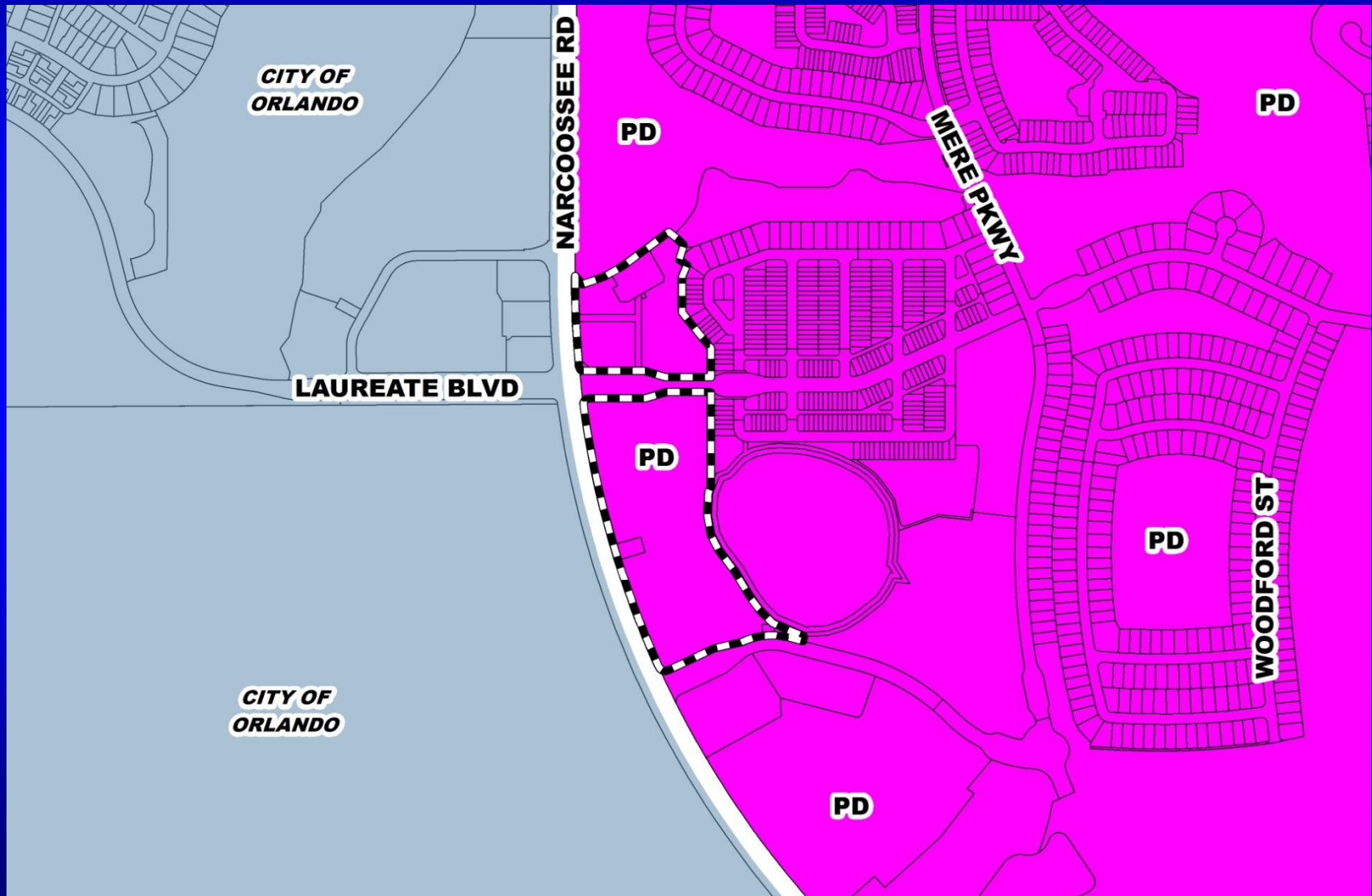


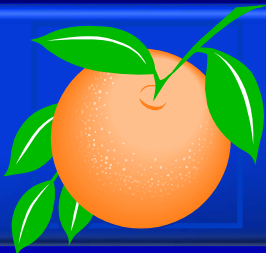
Eagle Creek PD / Parcel N South Commercial Center Preliminary Subdivision Plan (PSP) Future Land Use Map



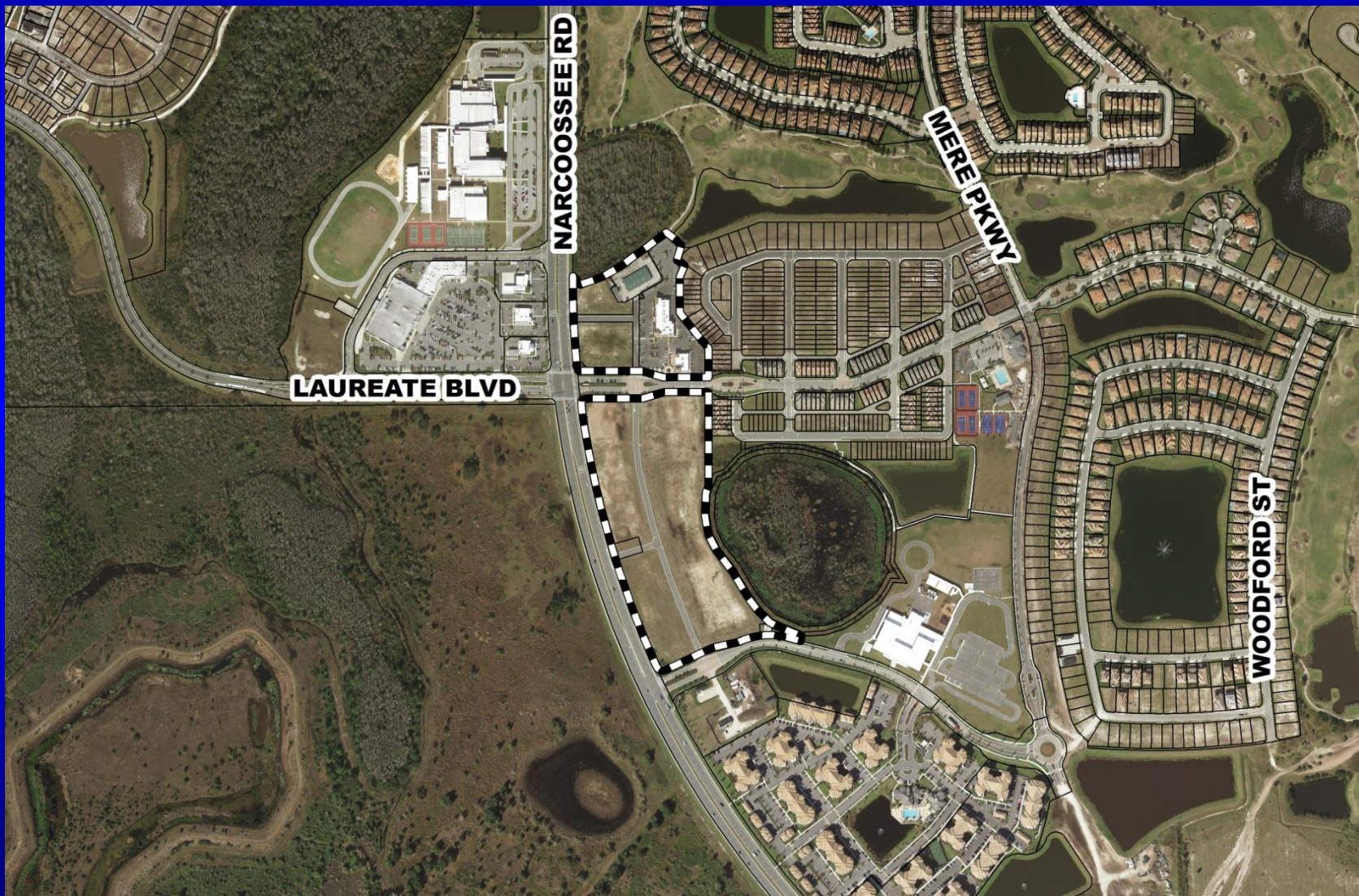


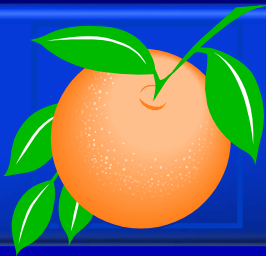
Eagle Creek PD / Parcel N South Commercial Center Preliminary Subdivision Plan (PSP) Zoning Map





Eagle Creek PD / Parcel N South Commercial Center Preliminary Subdivision Plan (PSP) Aerial Map





Action Requested

Make a finding of consistency with the Comprehensive Plan (CP) and approve the substantial change to the Eagle Creek Planned Development (PD) / Parcel N South Commercial Center Preliminary Subdivision Plan (PSP) dated “Received November 29, 2016”, subject to the conditions listed under the DRC Recommendation in the Staff Report.

District 4



Board of County Commissioners

Public Hearings

January 24, 2017