



Interoffice Memorandum
Community, Environmental and Development Services Department

DEC 27 2016

12-27-16 4:13 PM RCD

December 20, 2016

TO: Katie Smith, Manager
Comptroller Clerk's Office

THROUGH: Cheryl Gillespie, Agenda Development Supervisor
Agenda Development

FROM: Lori Cunniff, CEP, CHMM, Deputy Director *D. Weatherford for*
Community, Environmental and Development Services Department

STAFF PERSON: **Elizabeth R. Johnson, Environmental Programs Administrator**
Environmental Protection Division

PHONE #: **(407) 836-1511**

SUBJECT: Request for Public Hearing at 2:00 p.m. for a Conservation Area Impact Permit Application (CAI-15-10-035) for Mattamy Orlando, LLC; Parcel ID Nos. 34-23-27-0000-00-035, 35-23-27-0000-00-013, 34-23-27-0000-00-015, and 02-24-27-0000-00-005

NOTE: **Schedule this Public Hearing concurrently with Reams Road Property PSP-15-10-300 and CDR-16-09-329 (LUP)**

Applicants: Mattamy Orlando, LLC

Type of Hearing: Conservation Area Impact Permit

Hearing required by
Florida Statute # or Code: Orange County Comprehensive Plan

Advertising requirements: None

Advertising timeframes: None

Notification requirements: The applicant will be notified at least ten days prior to public hearing by the Environmental Protection Division (EPD). Notification of abutters is not necessary.

Lake Advisory Board
to be notified: None

Estimated time required
For public hearing: 2 minutes

LEGISLATIVE FILE # 17-084

*February 7, 2017
@ 2pm*

December 20, 2016

Request for Public Hearing – Conservation Area Impact Permit for Mattamy Orlando, LLC

Page 2 of 2

Hearing Controversial: No

Municipality or other
Public Agency to be
notified:

South Florida Water Management District - Marc Ady,
mady@sfwmd.gov

District #: 1

Materials being submitted as backup for public hearing request:

1. Site Plan
2. Location Map

Special Instructions to Clerk:

Once the Board of County Commissioners makes a decision on the Conservation Area Impact Permit Application, please submit the decision letter to Michelle Gonzalez of EPD. EPD will issue the decision to the applicant.

^{pw}
CRS/NT/ERJ/LC: mg

Attachments

c: Chris Testerman, Assistant County Administrator
Jon V. Weiss, P.E., Director, Community, Environmental and Development Services
Joel D. Prinsell, Deputy County Attorney

Conservation Area Impact Permit Application



Conservation Area Impact Permit Application

District #1

Applicant: Mattamy Orlando, LLC

Parcel IDs: 34-23-27-0000-00-035

35-23-27-0000-00-013

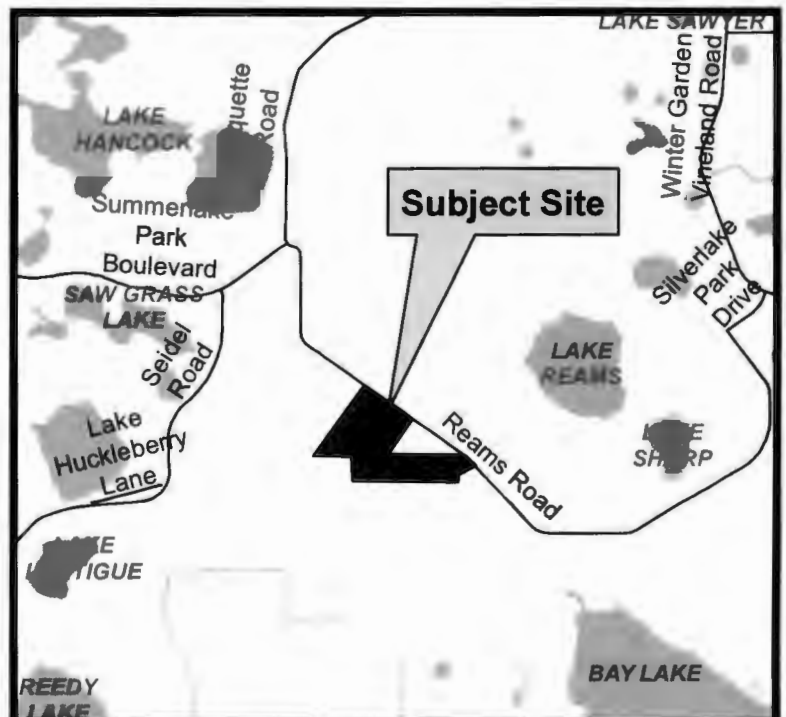
35-23-27-0000-00-015

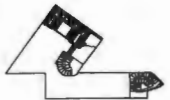
02-23-27-0000-00-005

Project Site



Property Location





125' 0 200' 400'
SCALE IN FEET

LEGEND

- PRIMARY WETLAND IMPACT AREA
 SECONDARY WETLAND IMPACT AREA / UPLAND BUFFER
 UPLAND BUFFER
 CONSERVATION AREA

NOTES

1. A CHARTERED AND IMPACT STATEMENT IS TO BE SUBMITTED TO ORANGE COUNTY, FLORIDA, AS PART OF THE PERMITTING PROCESS FOR THIS PROJECT. THE CHARTERED AND IMPACT STATEMENT IS TO BE SUBMITTED TO THE ORANGE COUNTY BOARD OF COUNTY COMMISSIONERS. THE CHARTERED AND IMPACT STATEMENT IS TO BE SUBMITTED TO THE ORANGE COUNTY BOARD OF COUNTY COMMISSIONERS. THE CHARTERED AND IMPACT STATEMENT IS TO BE SUBMITTED TO THE ORANGE COUNTY BOARD OF COUNTY COMMISSIONERS.

WETLANDS PER CONSERVATION TRACT	TRACT ID	WETLAND CLASS	ACRES
W-1	1	W-1	0.00
W-2	2	W-2	0.00
W-3	3	W-3	0.00
W-4	4	W-4	0.00
W-5	5	W-5	0.00
W-6	6	W-6	0.00
W-7	7	W-7	0.00
W-8	8	W-8	0.00
W-9	9	W-9	0.00
W-10	10	W-10	0.00
W-11	11	W-11	0.00
W-12	12	W-12	0.00
W-13	13	W-13	0.00
W-14	14	W-14	0.00
W-15	15	W-15	0.00
W-16	16	W-16	0.00
W-17	17	W-17	0.00
W-18	18	W-18	0.00
W-19	19	W-19	0.00
W-20	20	W-20	0.00
W-21	21	W-21	0.00
W-22	22	W-22	0.00
W-23	23	W-23	0.00
W-24	24	W-24	0.00
W-25	25	W-25	0.00
W-26	26	W-26	0.00
W-27	27	W-27	0.00
W-28	28	W-28	0.00
W-29	29	W-29	0.00
W-30	30	W-30	0.00
W-31	31	W-31	0.00
W-32	32	W-32	0.00
W-33	33	W-33	0.00
W-34	34	W-34	0.00
W-35	35	W-35	0.00
W-36	36	W-36	0.00
W-37	37	W-37	0.00
W-38	38	W-38	0.00
W-39	39	W-39	0.00
W-40	40	W-40	0.00
W-41	41	W-41	0.00
W-42	42	W-42	0.00
W-43	43	W-43	0.00
W-44	44	W-44	0.00
W-45	45	W-45	0.00
W-46	46	W-46	0.00
W-47	47	W-47	0.00
W-48	48	W-48	0.00
W-49	49	W-49	0.00
W-50	50	W-50	0.00
W-51	51	W-51	0.00
W-52	52	W-52	0.00
W-53	53	W-53	0.00
W-54	54	W-54	0.00
W-55	55	W-55	0.00
W-56	56	W-56	0.00
W-57	57	W-57	0.00
W-58	58	W-58	0.00
W-59	59	W-59	0.00
W-60	60	W-60	0.00
W-61	61	W-61	0.00
W-62	62	W-62	0.00
W-63	63	W-63	0.00
W-64	64	W-64	0.00
W-65	65	W-65	0.00
W-66	66	W-66	0.00
W-67	67	W-67	0.00
W-68	68	W-68	0.00
W-69	69	W-69	0.00
W-70	70	W-70	0.00
W-71	71	W-71	0.00
W-72	72	W-72	0.00
W-73	73	W-73	0.00
W-74	74	W-74	0.00
W-75	75	W-75	0.00
W-76	76	W-76	0.00
W-77	77	W-77	0.00
W-78	78	W-78	0.00
W-79	79	W-79	0.00
W-80	80	W-80	0.00
W-81	81	W-81	0.00
W-82	82	W-82	0.00
W-83	83	W-83	0.00
W-84	84	W-84	0.00
W-85	85	W-85	0.00
W-86	86	W-86	0.00
W-87	87	W-87	0.00
W-88	88	W-88	0.00
W-89	89	W-89	0.00
W-90	90	W-90	0.00
W-91	91	W-91	0.00
W-92	92	W-92	0.00
W-93	93	W-93	0.00
W-94	94	W-94	0.00
W-95	95	W-95	0.00
W-96	96	W-96	0.00
W-97	97	W-97	0.00
W-98	98	W-98	0.00
W-99	99	W-99	0.00
W-100	100	W-100	0.00

WETLANDS PER CONSERVATION TRACT	TRACT ID	WETLAND CLASS	ACRES
W-1	1	W-1	0.00
W-2	2	W-2	0.00
W-3	3	W-3	0.00
W-4	4	W-4	0.00
W-5	5	W-5	0.00
W-6	6	W-6	0.00
W-7	7	W-7	0.00
W-8	8	W-8	0.00
W-9	9	W-9	0.00
W-10	10	W-10	0.00
W-11	11	W-11	0.00
W-12	12	W-12	0.00
W-13	13	W-13	0.00
W-14	14	W-14	0.00
W-15	15	W-15	0.00
W-16	16	W-16	0.00
W-17	17	W-17	0.00
W-18	18	W-18	0.00
W-19	19	W-19	0.00
W-20	20	W-20	0.00
W-21	21	W-21	0.00
W-22	22	W-22	0.00
W-23	23	W-23	0.00
W-24	24	W-24	0.00
W-25	25	W-25	0.00
W-26	26	W-26	0.00
W-27	27	W-27	0.00
W-28	28	W-28	0.00
W-29	29	W-29	0.00
W-30	30	W-30	0.00
W-31	31	W-31	0.00
W-32	32	W-32	0.00
W-33	33	W-33	0.00
W-34	34	W-34	0.00
W-35	35	W-35	0.00
W-36	36	W-36	0.00
W-37	37	W-37	0.00
W-38	38	W-38	0.00
W-39	39	W-39	0.00
W-40	40	W-40	0.00
W-41	41	W-41	0.00
W-42	42	W-42	0.00
W-43	43	W-43	0.00
W-44	44	W-44	0.00
W-45	45	W-45	0.00
W-46	46	W-46	0.00
W-47	47	W-47	0.00
W-48	48	W-48	0.00
W-49	49	W-49	0.00
W-50	50	W-50	0.00
W-51	51	W-51	0.00
W-52	52	W-52	0.00
W-53	53	W-53	0.00
W-54	54	W-54	0.00
W-55	55	W-55	0.00
W-56	56	W-56	0.00
W-57	57	W-57	0.00
W-58	58	W-58	0.00
W-59	59	W-59	0.00
W-60	60	W-60	0.00
W-61	61	W-61	0.00
W-62	62	W-62	0.00
W-63	63	W-63	0.00
W-64	64	W-64	0.00
W-65	65	W-65	0.00
W-66	66	W-66	0.00
W-67	67	W-67	0.00
W-68	68	W-68	0.00
W-69	69	W-69	0.00
W-70	70	W-70	0.00
W-71	71	W-71	0.00
W-72	72	W-72	0.00
W-73	73	W-73	0.00
W-74	74	W-74	0.00
W-75	75	W-75	0.00
W-76	76	W-76	0.00
W-77	77	W-77	0.00
W-78	78	W-78	0.00
W-79	79	W-79	0.00
W-80	80	W-80	0.00
W-81	81	W-81	0.00
W-82	82	W-82	0.00
W-83	83	W-83	0.00
W-84	84	W-84	0.00
W-85	85	W-85	0.00
W-86	86	W-86	0.00
W-87	87	W-87	0.00
W-88	88	W-88	0.00
W-89	89	W-89	0.00
W-90	90	W-90	0.00
W-91	91	W-91	0.00
W-92	92	W-92	0.00
W-93	93	W-93	0.00
W-94	94	W-94	0.00
W-95	95	W-95	0.00
W-96	96	W-96	0.00
W-97	97	W-97	0.00
W-98	98	W-98	0.00
W-99	99	W-99	0.00
W-100	100	W-100	0.00

PROPOSED WETLAND IMPACTS (SEE NOTE 1 THIS SHEET)			
	TRACT ID	WETLAND CLASS	ACRES
PRIMARY IMPACT-1	1		0.00
PRIMARY IMPACT-2	2		0.00
PRIMARY IMPACT-3	3		1.00
PRIMARY IMPACT-4	4		0.00
PRIMARY IMPACT-5	5		0.00
PRIMARY IMPACT-6	6		0.00
PRIMARY IMPACT-7	7		0.00
PRIMARY IMPACT-8	8		0.00
PRIMARY IMPACT-9	9		0.00
PRIMARY IMPACT-10	10		0.00
PRIMARY IMPACT-11	11		0.00
PRIMARY SUBTOTAL			0.00
PRIMARY IMPACT-12 (NONHABITAT)	12		0.00
NONHABITAT SUBTOTAL			0.00
PRIMARY SUBTOTAL (CONV. NONHABITAT)			0.00
SECONDARY IMPACT-1	1		0.00
SECONDARY IMPACT-2	2		0.00
SECONDARY IMPACT-3	3		0.00
SECONDARY IMPACT-4	4		0.00
SECONDARY SUBTOTAL			0.00
TOTAL			0.00