



Board of County Commissioners

Public Hearings

February 21, 2017

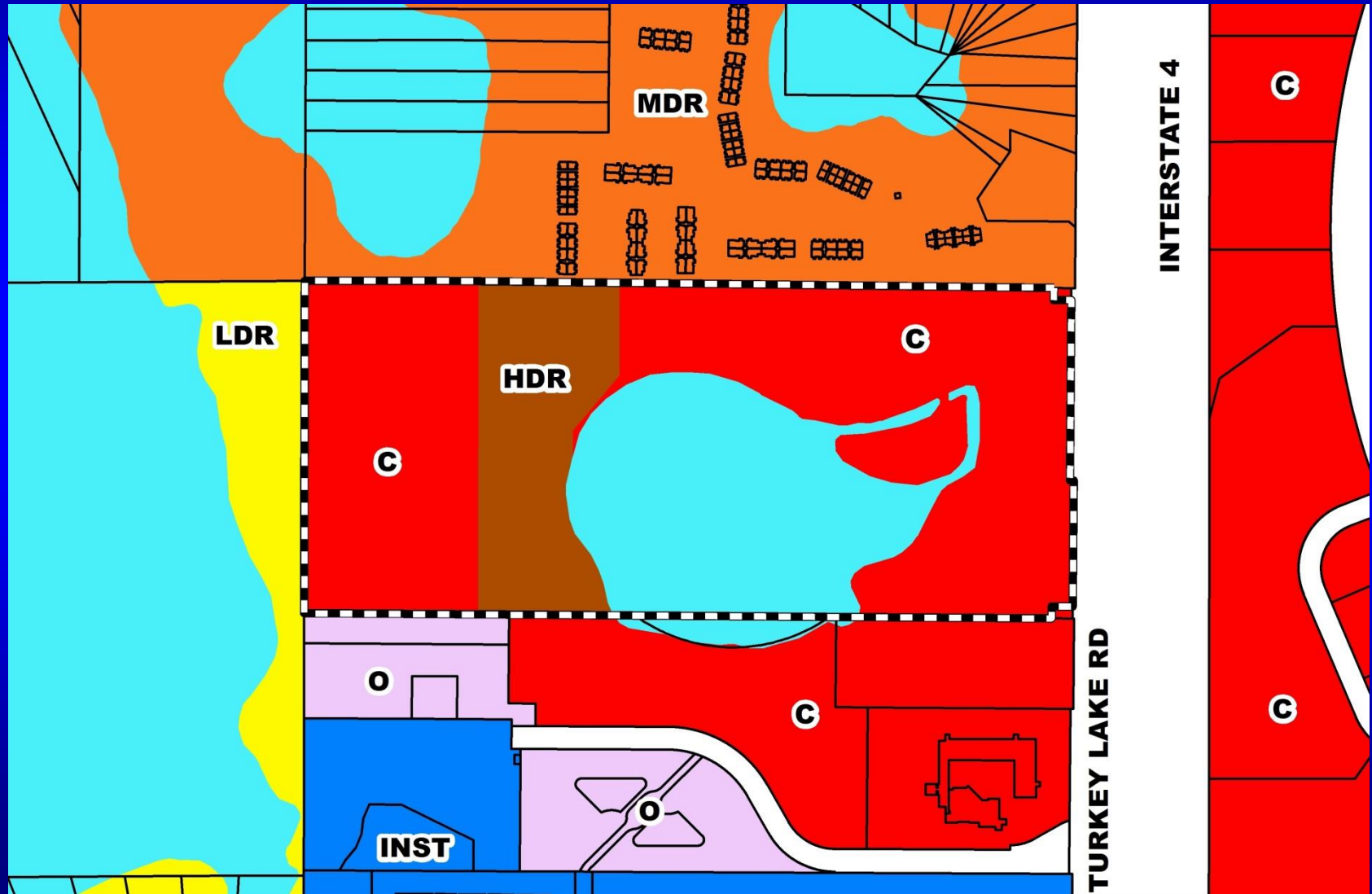


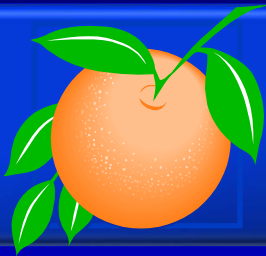
National Spa and Resort Planned Development / Land Use Plan (PD/LUP)

Case:	CDR-16-09-339
Project Name:	National Spa and Resort PD/LUP
Applicant:	Jamie T. Poulos, Poulos and Bennett, LLC
District:	1
Acreage:	64.89 gross acres (overall PD)
Location:	Generally located west of Turkey Lake Road and south of Sand Lake Road
Request:	<p>To incorporate the following waiver from Orange County Code:</p> <ol style="list-style-type: none">1. A waiver from Section 38-1272(a)(5) to allow for a maximum building height of 55 feet for self-storage uses only, in lieu of a maximum building height of 50 feet.

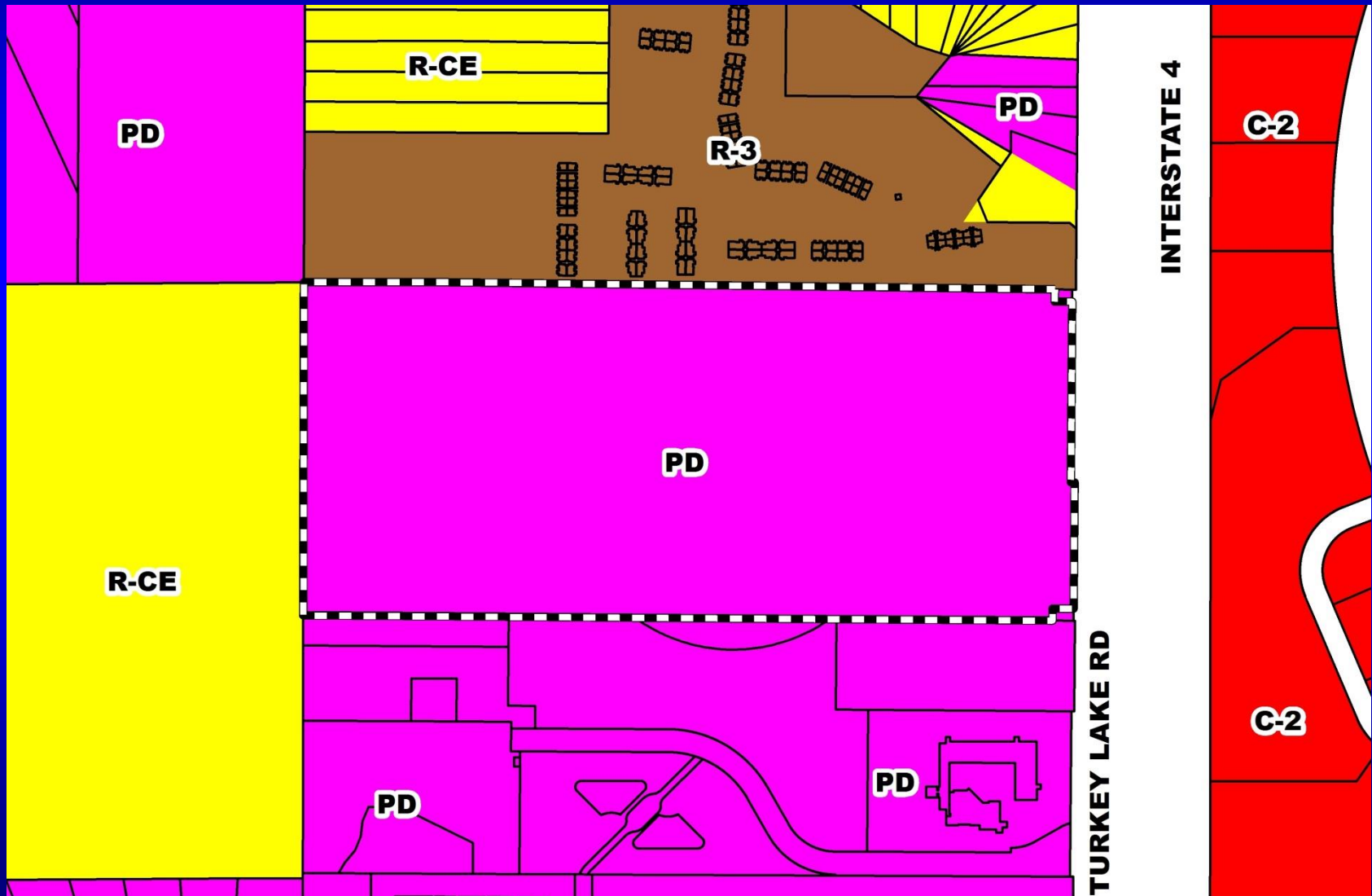


National Spa and Resort Planned Development / Land Use Plan (PD/LUP) Future Land Use Map





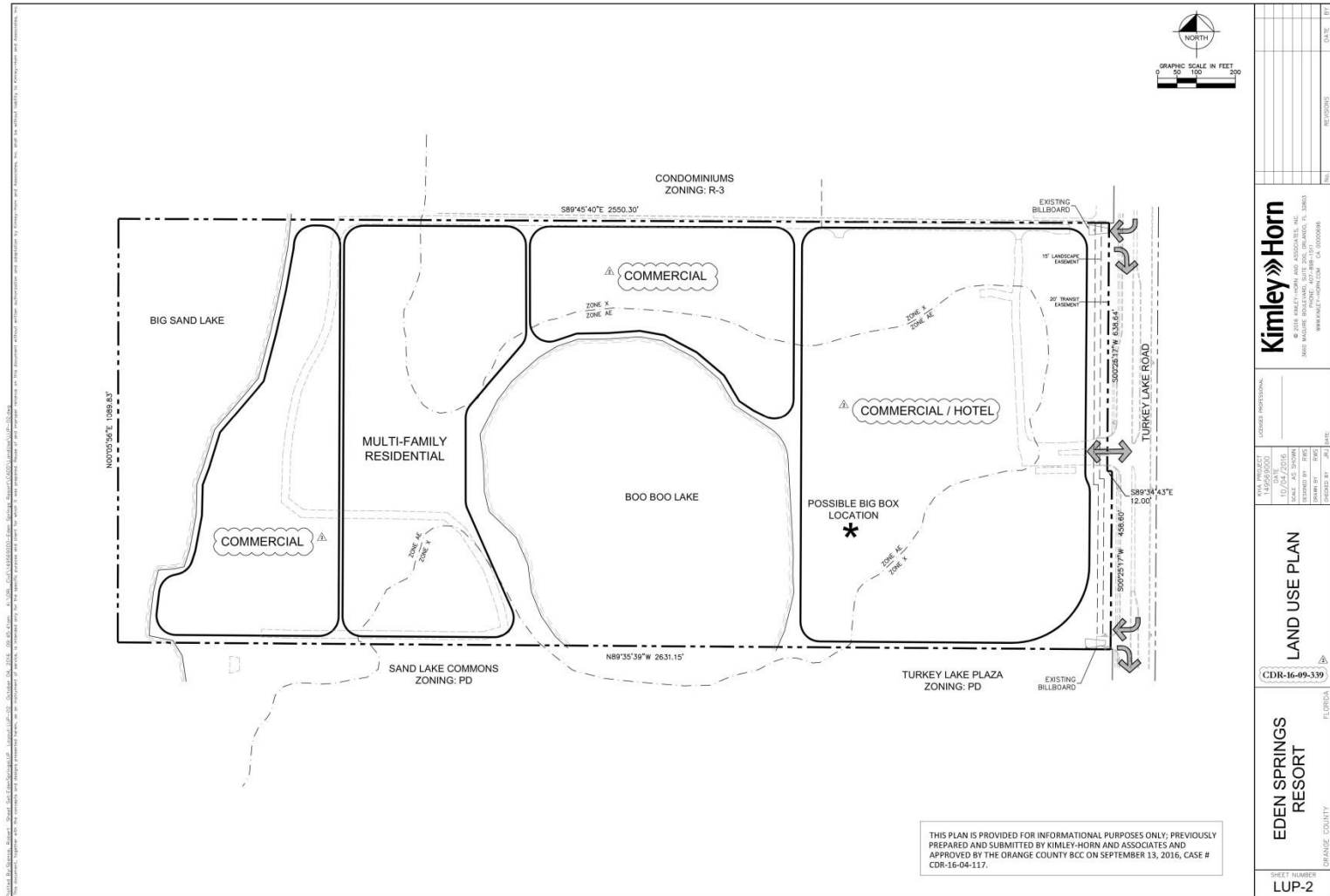
National Spa and Resort Planned Development / Land Use Plan (PD/LUP) Zoning Map





National Spa and Resort Planned Development / Land Use Plan (PD/LUP) Aerial Map







Action Requested

Make a finding of consistency with the Comprehensive Plan (CP) and approve the substantial change to the National Spa and Resort Planned Development / Land Use Plan (PD/LUP) dated “Received November 4, 2016”, subject to the conditions listed under the DRC Recommendation in the Staff Report.

District 1



Board of County Commissioners

Public Hearings

February 21, 2017