

Health Services Department

Animal Services Capital Improvement Project

February 21, 2017



Presentation Purpose

Purpose

- The current animal shelter cannot meet the long term needs and expectations of the community
- At the July 12, 2016 BCC Meeting, a question was raised about how to move forward
- Assessment initiated to review all of the considerations of a new facility
- Update on assessment of the needs and planning a new facility



Presentation Overview

- Overview
- Recent & Upcoming Projects
- Planning Considerations
- Other Agencies
- Facility Needs
- Summary



Presentation Overview

- Overview
- Recent & Upcoming Projects
- Planning Considerations
- Other Agencies
- Facility Needs
- Summary



Overview

- Provide Services for stray lost and relinquished animals
- Open admissions shelter
 - No animals are turned away
- Collaborates with hundreds of pet rescues and volunteers
- Received Florida Animal Control Association “Agency of the Year” award in 2016





Overview

Fiscal Year	Impounds	Adoptions	Sterilizations	Visitors
FY 10-11	22,321	4,478	6,075	72,454
FY 11-12	23,196	4,461	7,245	71,161
FY 12-13	20,315	4,431	6,158	70,643
FY 13-14	20,750	6,188	5,790	80,761
FY 14-15	19,353	7,842	9,525	104,947
FY 15-16	18,896	8,348	9,195	109,700
% Change from FY11 to FY16	-18%	+86%	+51%	+52%



Overview

Fiscal Year	Impounds	Adoptions	Sterilizations	Visitors
FY 10-11	22,321	4,478	6,075	72,454
FY 11-12	23,196	4,461	7,245	71,161
FY 12-13	20,315	4,431	6,158	70,643
FY 13-14	20,750	6,188	5,790	80,761
FY 14-15	19,353	7,842	9,525	104,947
FY 15-16	18,896	8,348	9,195	109,700
% Change from FY11 to FY16	-18%	+86%	+51%	+52%



Overview

Fiscal Year	Impounds	Adoptions	Sterilizations	Visitors
FY 10-11	22,321	4,478	6,075	72,454
FY 11-12	23,196	4,461	7,245	71,161
FY 12-13	20,315	4,431	6,158	70,643
FY 13-14	20,750	6,188	5,790	80,761
FY 14-15	19,353	7,842	9,525	104,947
FY 15-16	18,896	8,348	9,195	109,700
% Change from FY11 to FY16	-18%	+86%	+51%	+52%



Overview

Fiscal Year	Impounds	Adoptions	Sterilizations	Visitors
FY 10-11	22,321	4,478	6,075	72,454
FY 11-12	23,196	4,461	7,245	71,161
FY 12-13	20,315	4,431	6,158	70,643
FY 13-14	20,750	6,188	5,790	80,761
FY 14-15	19,353	7,842	9,525	104,947
FY 15-16	18,896	8,348	9,195	109,700
% Change from FY11 to FY16	-18%	+86%	+51%	+52%



Overview

Current Facility

- Built in 1987 approximately 25,000 SF
 - Series of buildings including Clinic
 - At the time it was a state of the art facility
- Housing for Cats
 - 216 Cat Cages
- Housing for dogs
 - 50 large dog kennels, 15 small dog kennels, 15 “extended kennels” with clear fronts



Presentation Overview

- Overview
- **Recent & Upcoming Projects**
- Planning Considerations
- Other Agencies
- Facility Needs
- Summary



Recent & Upcoming Projects

Entrance Improvements





Recent & Upcoming Projects

Lobby Improvements





Recent & Upcoming Projects

Photo Area Improvements





Recent & Upcoming Projects

Building 500 Replaced

- Improved Training Area
- Serves as Hub for Enforcement Team





Recent & Upcoming Projects

Cat Condo Improvements





Recent & Upcoming Projects

Dog Kennel Improvements





Recent & Upcoming Projects

Dog Kennel Technology Upgrades





Recent & Upcoming Projects

Paws by the Lake Walkway & Exercise Pathway





Recent & Upcoming Projects

East Side Interaction Yards





Recent & Upcoming Projects

Courtyard - Location for New Interaction Yards





Recent & Upcoming Projects

Cat Kennel Improvements





Recent & Upcoming Projects

Ventilation Project

- Individual Vents at Each Kennel & Quieter Fans
- Contract Awarded by BCC 1/10/17
- Materials ordered
- Work has started





Recent & Upcoming Projects

Spay/Neuter Clinic – EAST SIDE







Presentation Overview

- Overview
- Recent & Upcoming Projects
- **Planning Considerations**
- Other Agencies
- Facility Needs
- Summary



Planning Considerations

Meeting Citizen's Expectations for Facility

- No longer just a facility to assist with the management of rabies and the stray & nuisance animal population as it was originally designed
- Must be a full service adoption & animal care center
- Needs to be a fully air-conditioned modern facility with medical grade enhancements for disease control that is bright, open, and inviting
- Existing facility is nearing the end of its useful life



Planning Considerations

Location Options

- One new facility located on a new piece of property (7 acre minimum)
- Two new facilities located on two new pieces of property (5 acre minimum)
- One new facility located on the existing campus



Presentation Overview

- Overview
- Recent & Upcoming Projects
- Planning Considerations
- **Other Agencies**
- Facility Needs
- Summary



Other Agencies

Broward County Animal Services

- Population - 1.8M
- Area - 1,323 Square Miles
 - Housing for 178 Dogs
 - Housing for 244 Cats & Kittens
 - 40,000 SF
 - \$15.2M
 - \$380/SF NEW
 - Built in 2016



Other Agencies

Broward County Animal Services





Other Agencies

Broward County Animal Services



Other Agencies

Broward County Animal Services



Other Agencies

Humane Society of Broward County





Presentation Overview

- Overview
- Recent & Upcoming Projects
- Planning Considerations
- Other Agencies
- **Facility Needs**
- Summary



Facility Needs

Orange County Animal Services

- **Population - 1.3M**
- **Area - 1,003 Square Miles**
- **Housing for 150 - 200 Dog Kennels**
- **Housing for 175 - 225 Cat Capacity**
- **Clinic for shelter residents**
- **Preliminary Housing numbers being formulated based on history**



Facility Needs

Reviewed Location Options

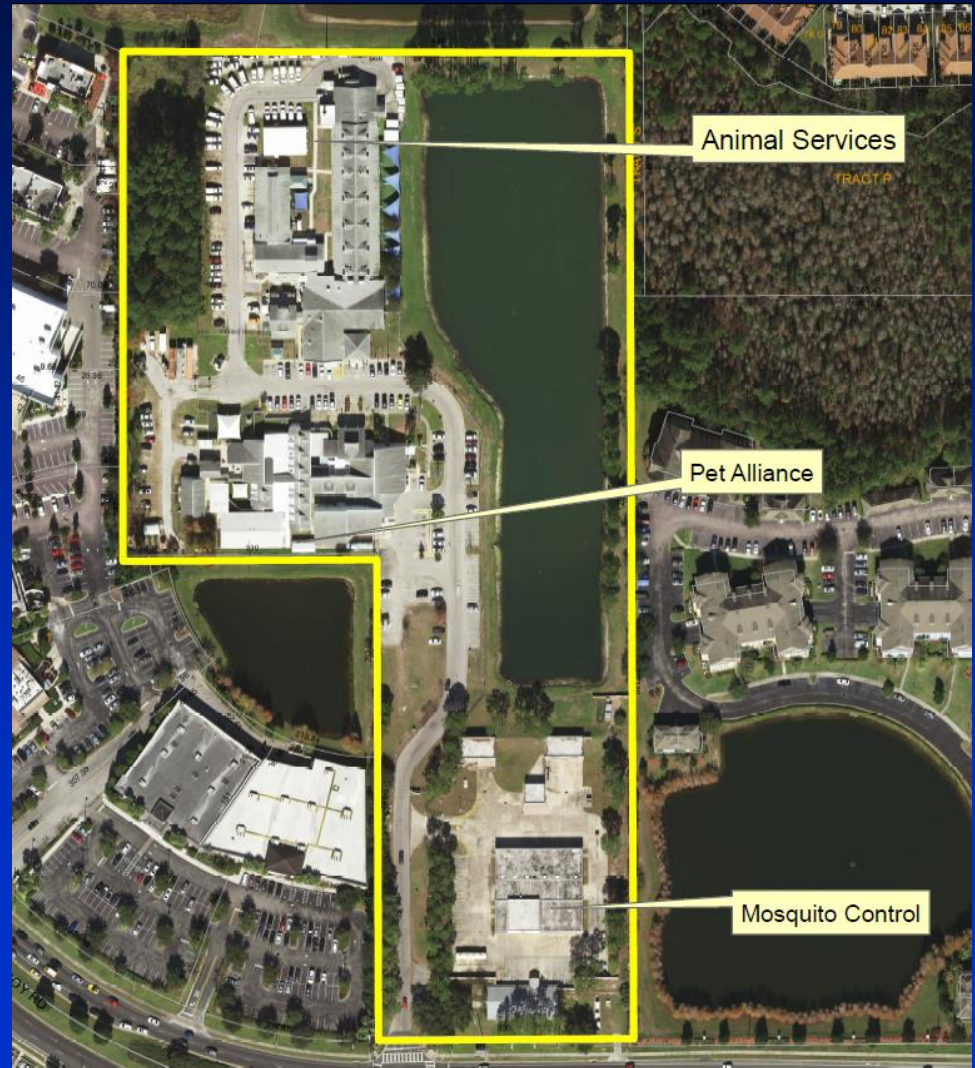
- **Difficult to re-locate**
 - Not compatible with surrounding uses
 - Limits search to Industrial or remote areas
- **Not efficient to split services between multiple campuses**
 - Causes a duplication of services
- **Evaluated existing location**



Facility Needs

Current Location

- Ideal to stay on existing campus
- Discussions are ongoing to relocate the Pet Alliance
- If necessary a new building could be built in phases





Facility Needs

Current Location

- Shopping traffic increases visitors
- Provides high volume of quality adoption candidates
- Centrally located
- Easy access to I-4 and John Young Parkway





Facility Needs

Based on analysis of Current & Future Needs

- 50,000 SF to 70,000 SF Shelter including clinic, cat kennels and dog kennels, offices, and exercise areas
- Convenient Parking Lot/Parking Deck if necessary
- Construction Cost estimated at \$365/SF
- Estimate cost of \$25M - \$35M for a Modern Animal Services Shelter including soft costs & equipment



Presentation Overview

- Overview
- Recent & Upcoming Projects
- Planning Considerations
- Other Agencies
- Facility Needs
- **Summary**

Summary

- Further refine the facility needs & costs
- Return to the BCC for consideration of a new Animal Services Shelter & Adoption Center



Health Services Department

Animal Services Capital Improvement Project

February 21, 2017