



Board of County Commissioners

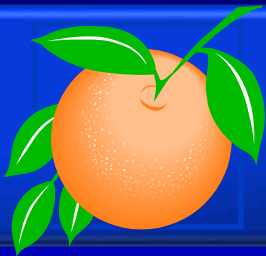
Public Hearings

March 7, 2017

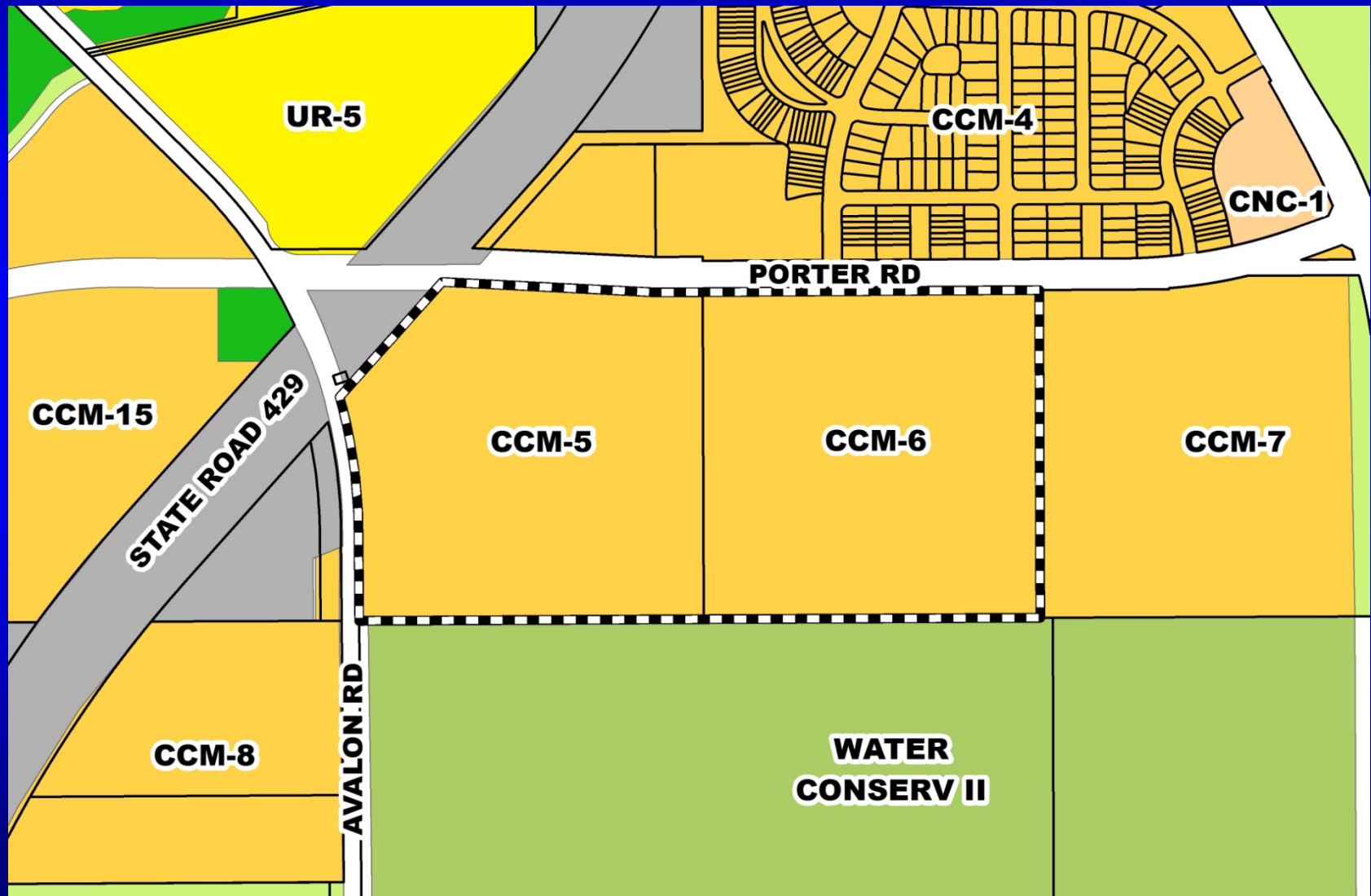


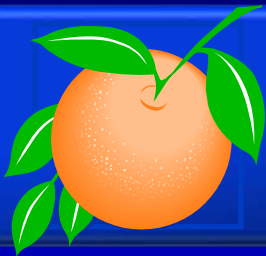
Orlando Health Central Porter Road Medical Campus Planned Development / Land Use Plan (PD/LUP)

Case:	CDR-16-07-233
Project Name:	Orlando Health Central Porter Road Medical Campus PD/LUP
Applicant:	Anthony Concolino, KMA Design
District:	1
Acreage:	73.59 gross acres
Location:	South of Porter Road / East of Avalon Road
Request:	To incorporate a Master Sign Plan (MSP) in order to accommodate additional signage.

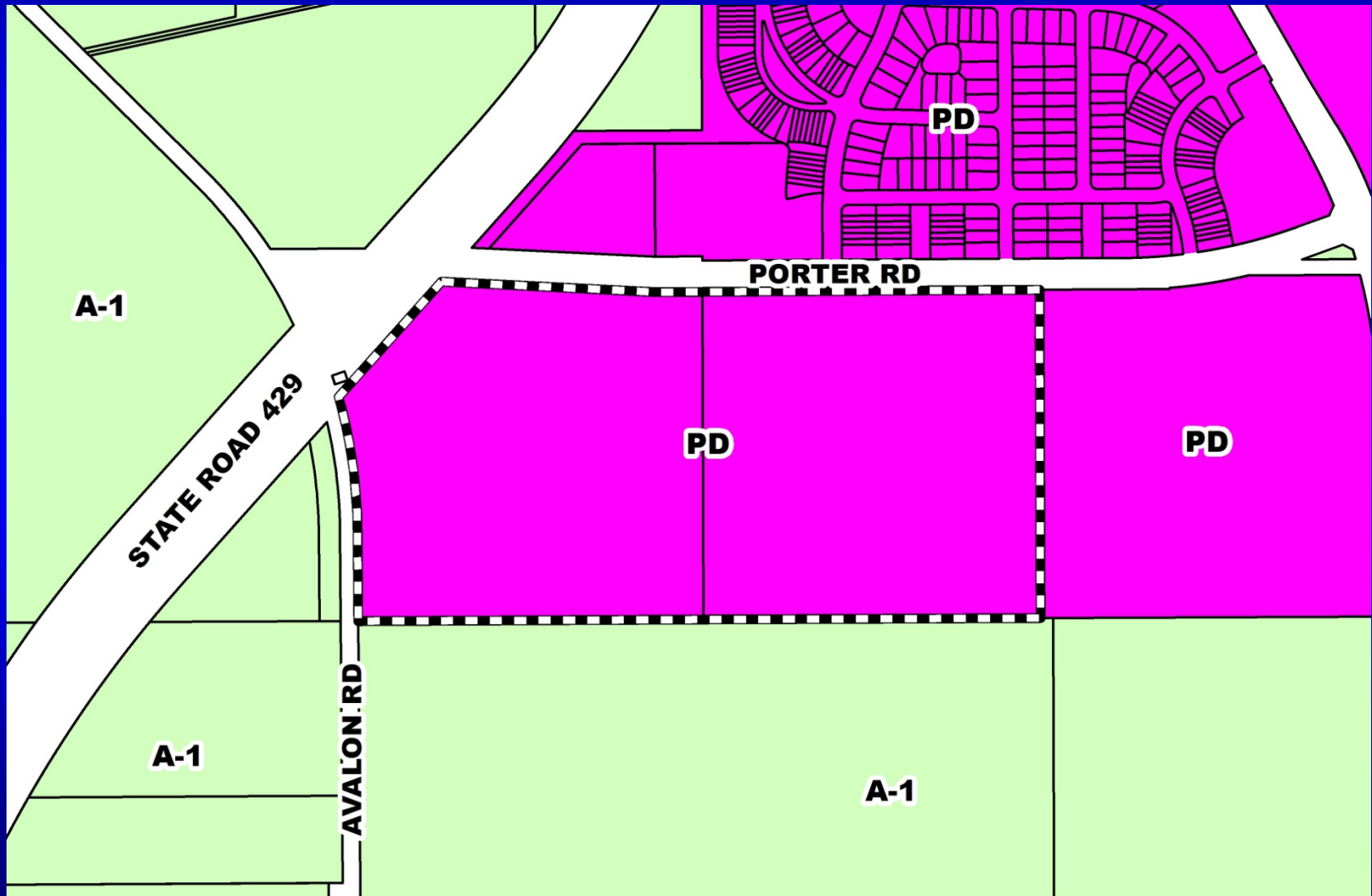


Orlando Health Central Porter Road Medical Campus Planned Development / Land Use Plan (PD/LUP) Future Land Use Map



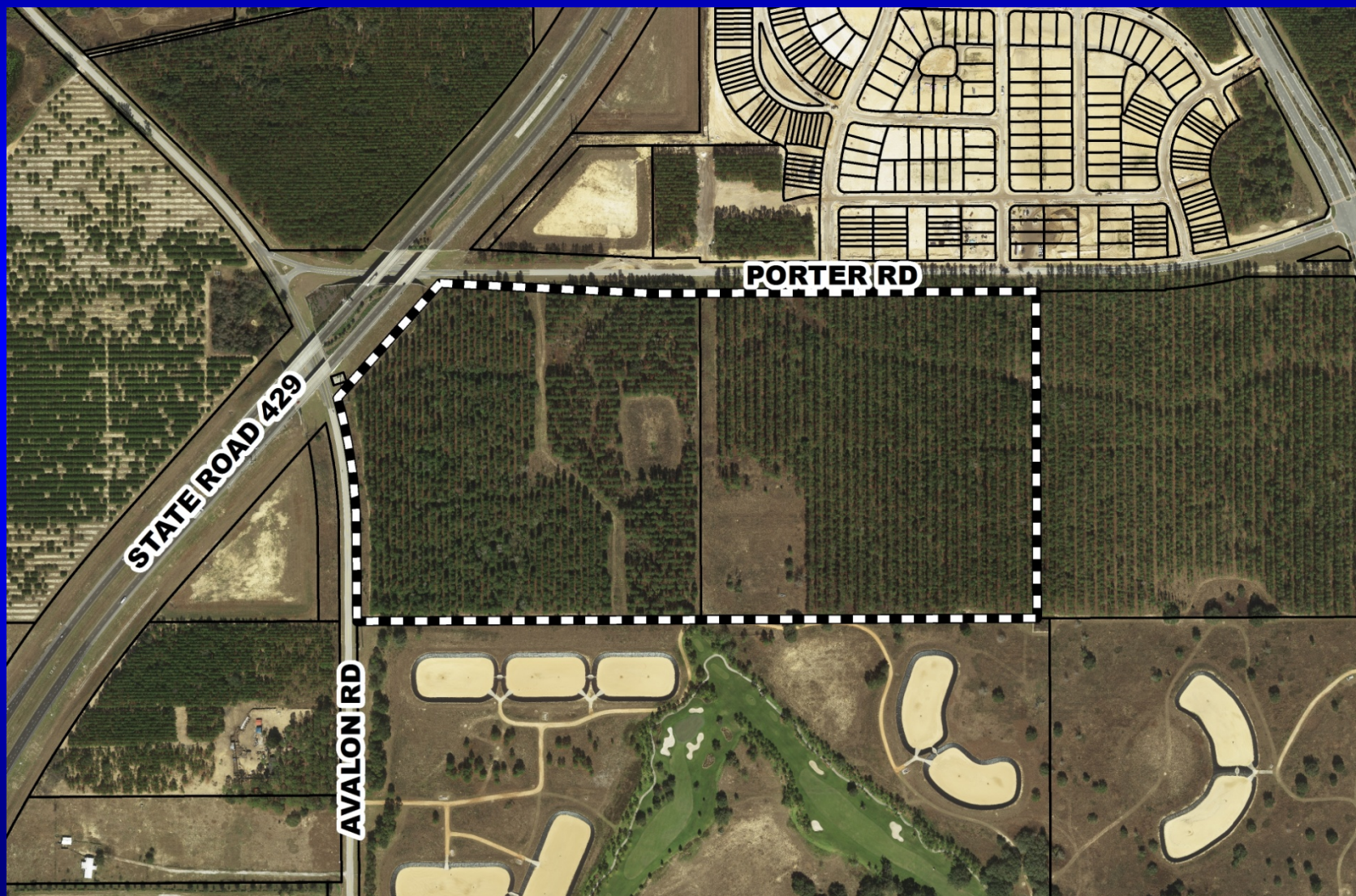


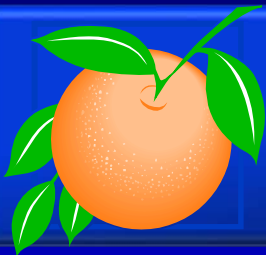
Orlando Health Central Porter Road Medical Campus Planned Development / Land Use Plan (PD/LUP) Zoning Map



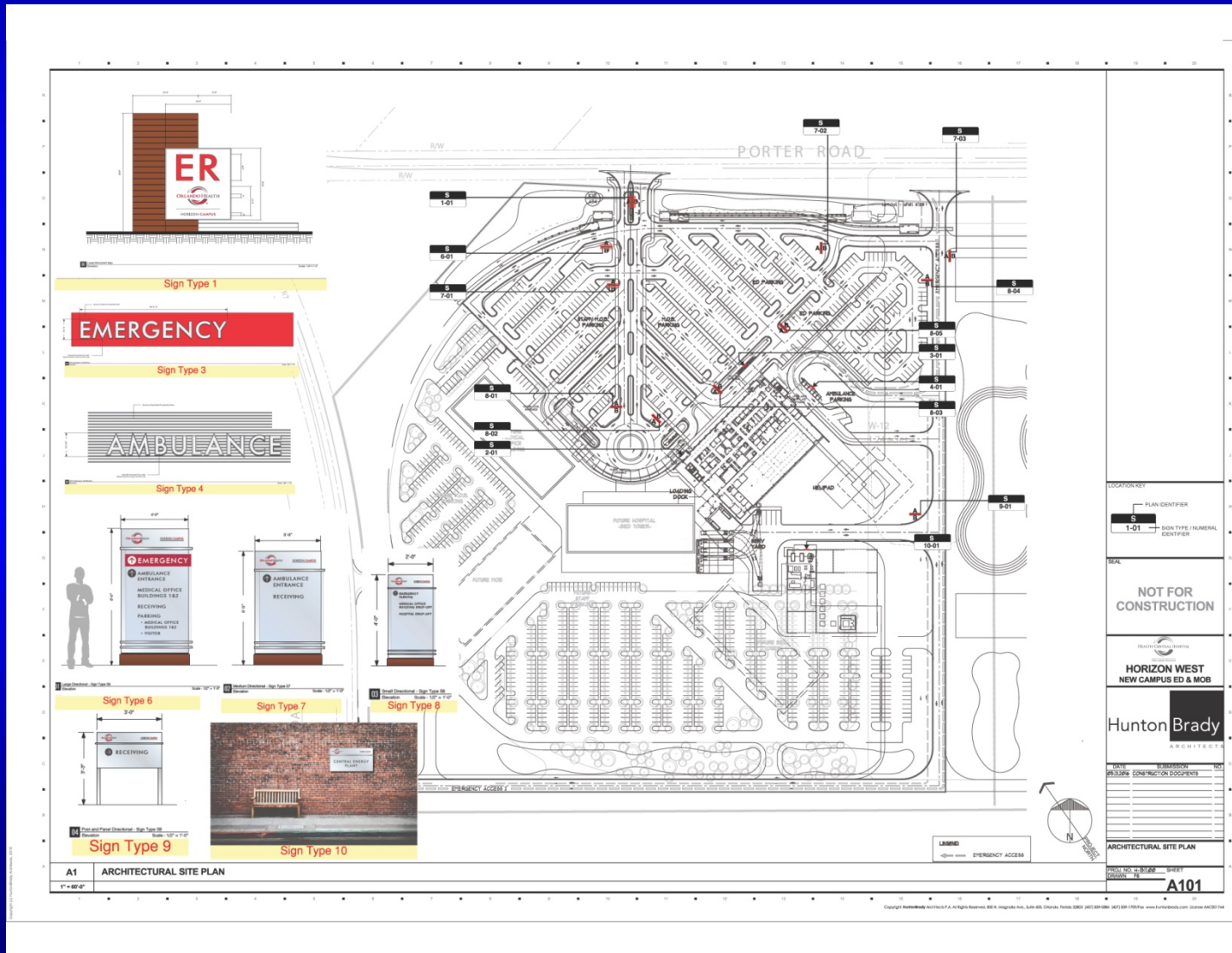


Orlando Health Central Porter Road Medical Campus Planned Development / Land Use Plan (PD/LUP) Aerial Map





Orlando Health Central Porter Road Medical Campus Planned Development / Land Use Plan (PD/LUP)





Action Requested

Make a finding of consistency with the Comprehensive Plan (CP) and approve the substantial change to the Orlando Health Central Porter Road Medical Campus Planned Development / Land Use Plan (PD/LUP) dated “Received October 28, 2016”, subject to the conditions listed under the DRC Recommendation in the Staff Report.

District 1