



Board of County Commissioners

Public Hearings

March 7, 2017



Lone Palm

Planned Development / Land Use Plan (PD/LUP)

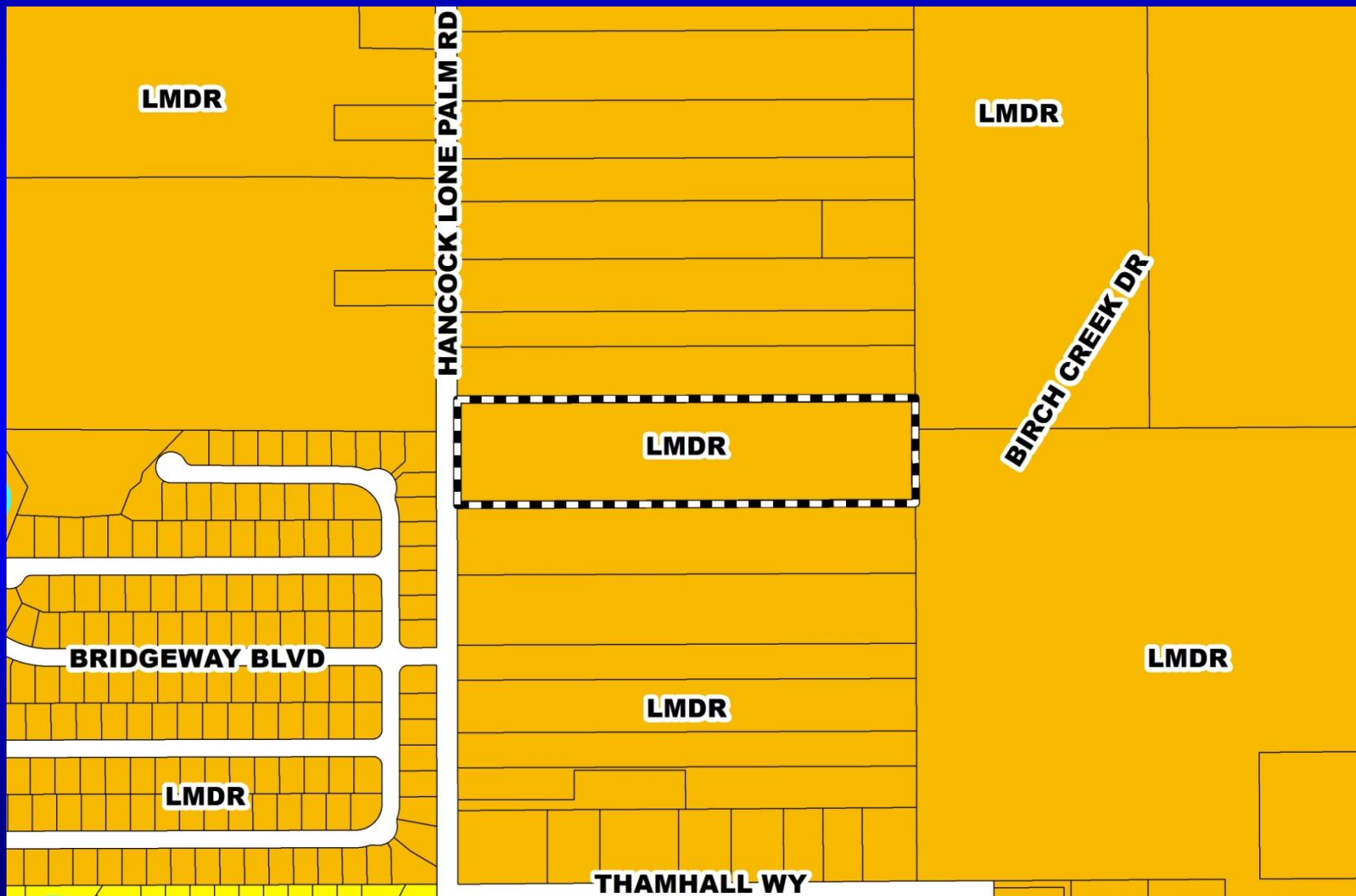
Case:	LUP-16-09-331
Project Name:	Lone Palm PD/LUP
Applicant:	Christopher Wrenn, D.R. Horton, Inc.
District:	4
Acreage:	9.0 gross acres
Location:	1333 Hancock Lone Palm Road; or generally east of Hancock Lone Palm Road, approximately 2,500 feet south of E. Colonial Drive
Request:	Forty (40) single-family detached residential dwelling units

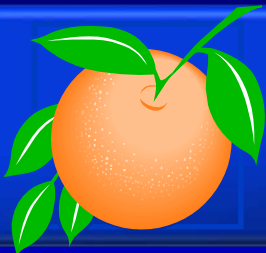


Lone Palm

Planned Development / Land Use Plan (PD/LUP)

Future Land Use Map

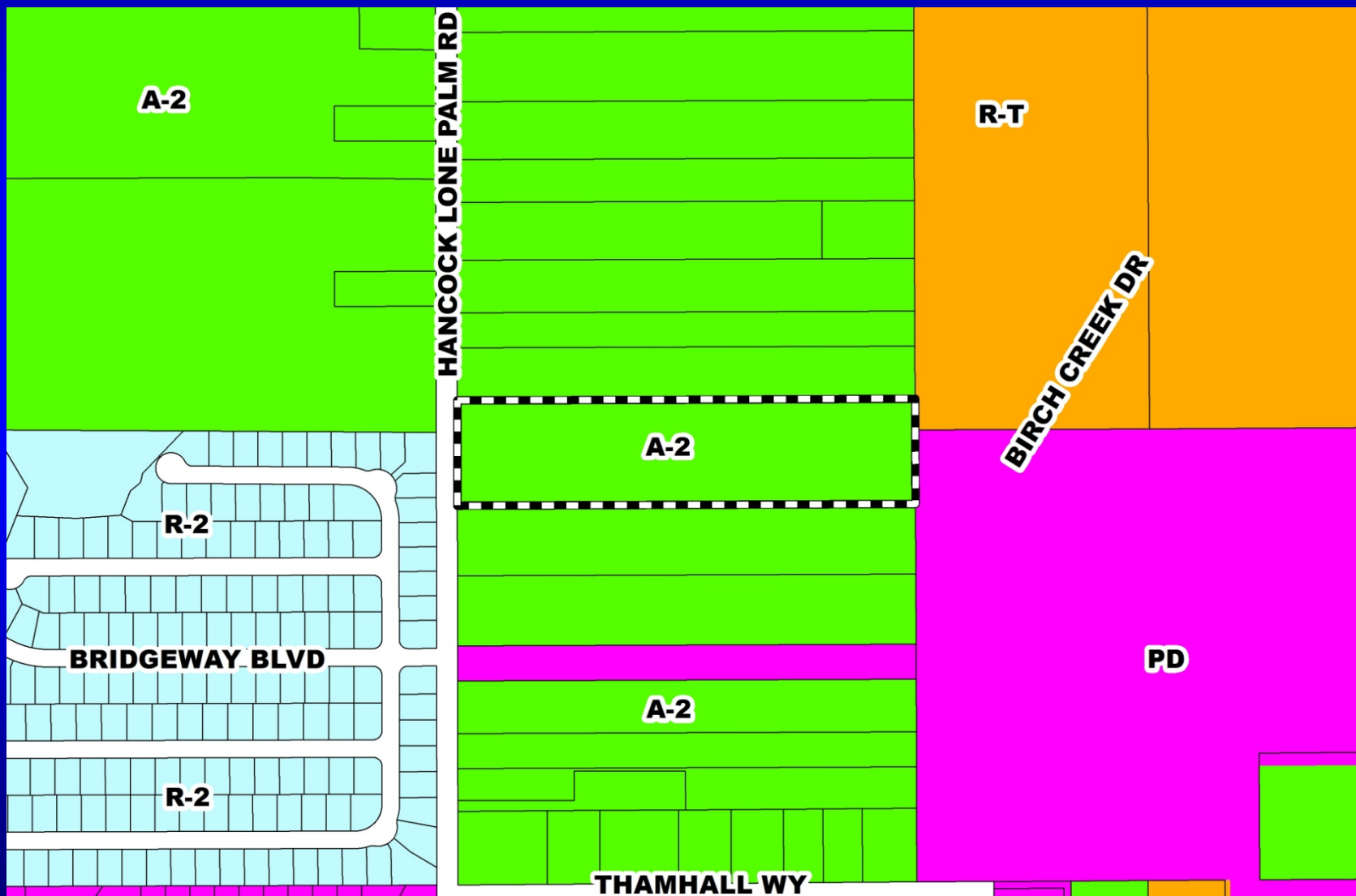




Lone Palm

Planned Development / Land Use Plan (PD/LUP)

Zoning Map

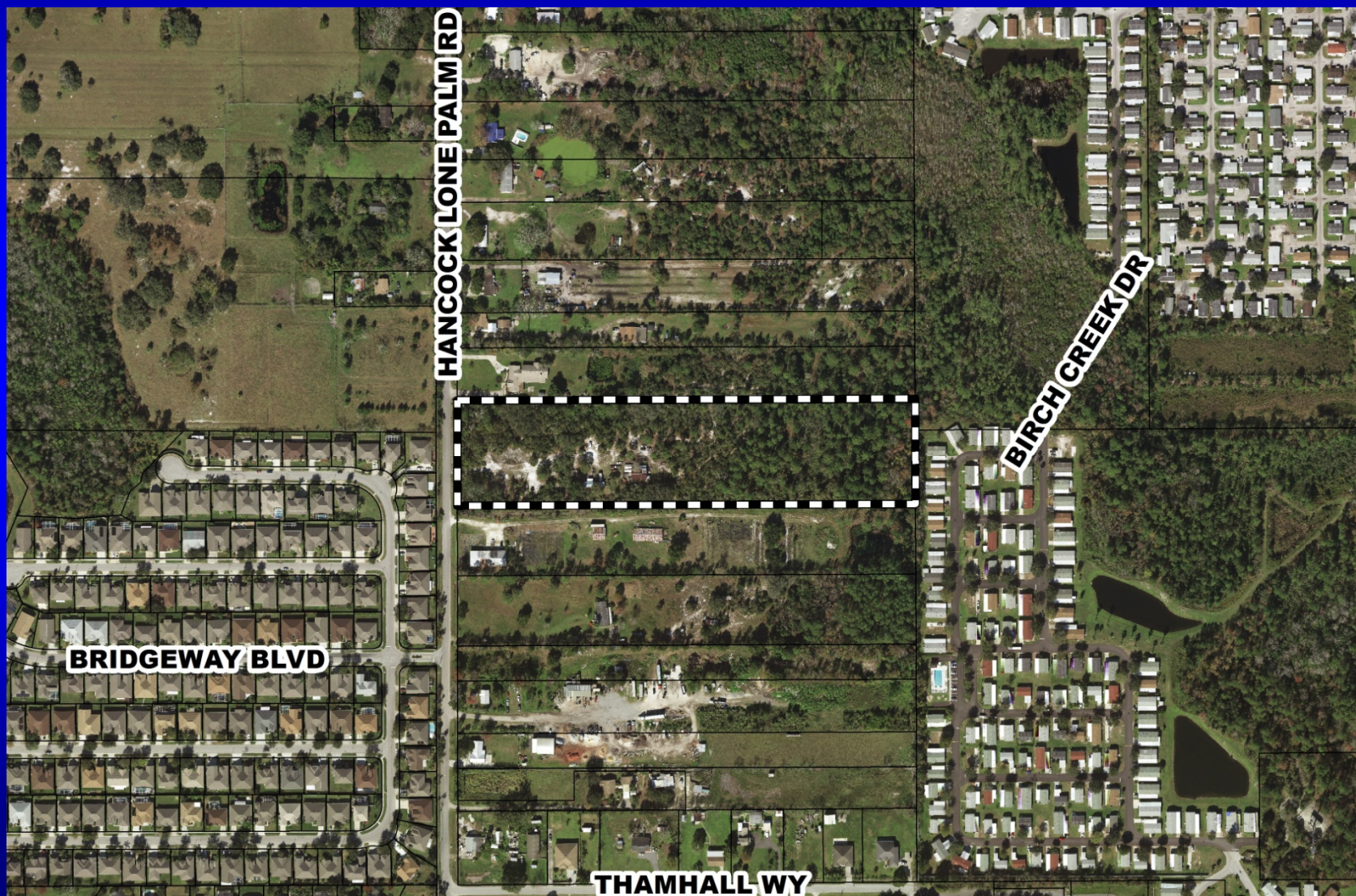


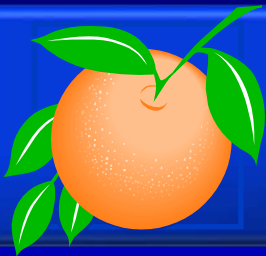


Lone Palm

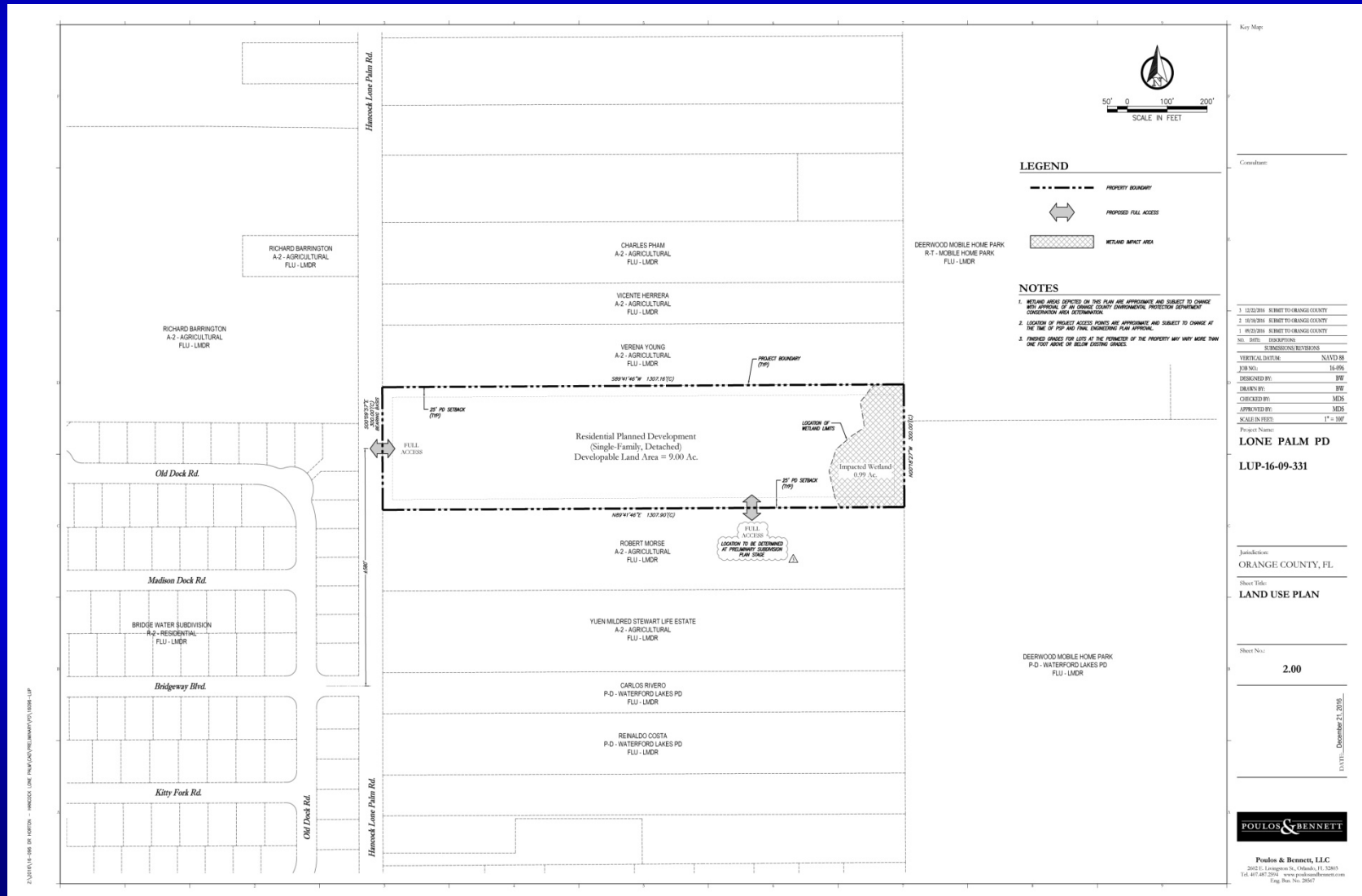
Planned Development / Land Use Plan (PD/LUP)

Aerial Map





Lone Palm Planned Development / Land Use Plan (PD/LUP)





Action Requested

Make a finding of consistency with the Comprehensive Plan (CP) and approve the Lone Palm Planned Development / Land Use Plan (PD/LUP) dated “Received December 27, 2016”, subject to the conditions listed under the PZC Recommendation in the Staff Report.

District 4