



Board of County Commissioners

Public Hearings

March 21, 2017



Hickory Nut Estates PD / Hickory Nut Estates Preliminary Subdivision Plan (PSP)

Case: PSP-16-02-222

Project Name: Hickory Nut Estates PD / Hickory Nut Estates PSP

Applicant: Marc Stehli, Poulos & Bennett, LLC

District: 1

Acreage: 99.9 gross acres

Location: East of Lake County – Orange County Line / South of Old YMCA Road

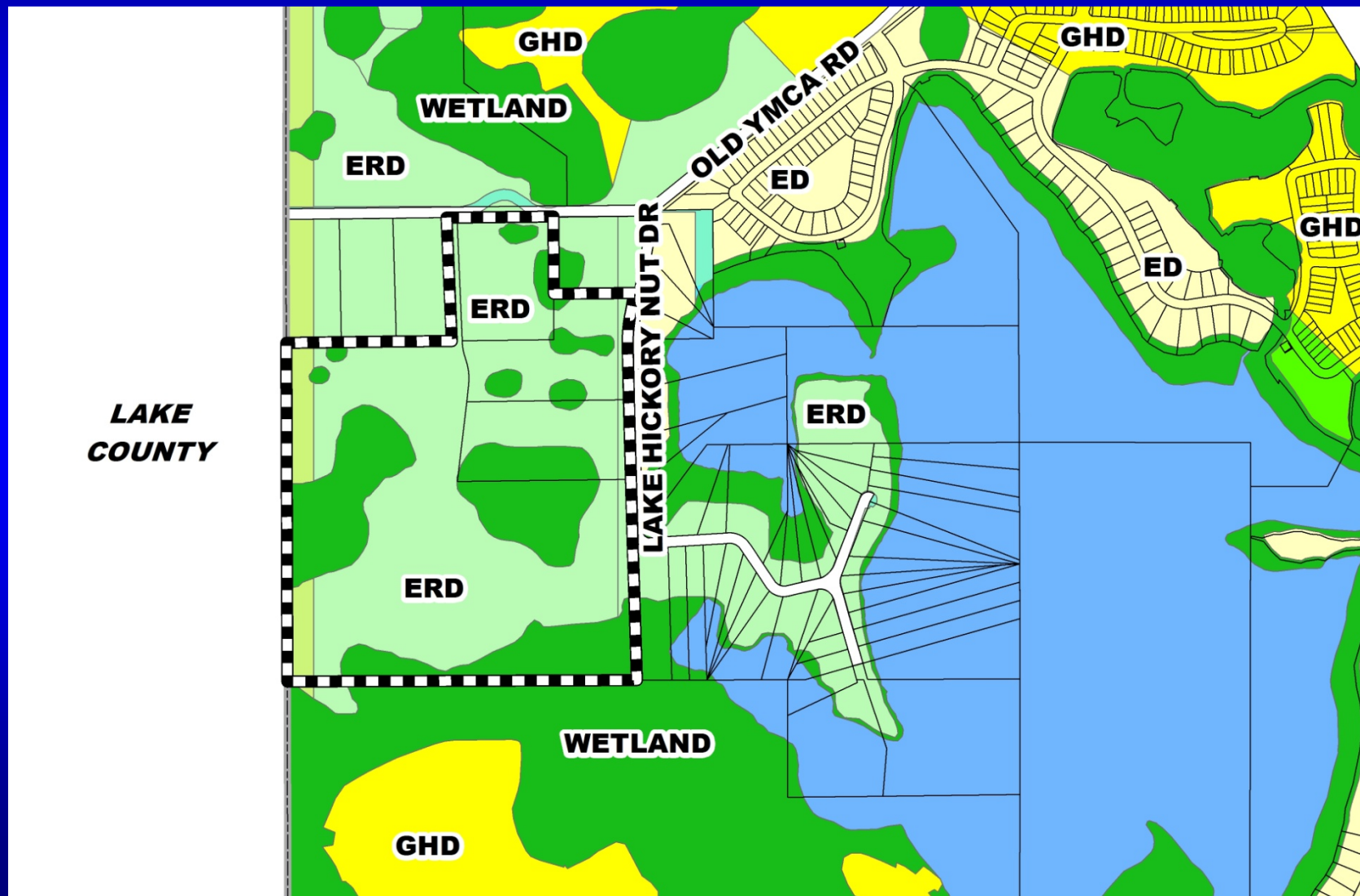
Request: To subdivide 99.9 gross acres in order to construct forty (40) single-family residential dwelling units.

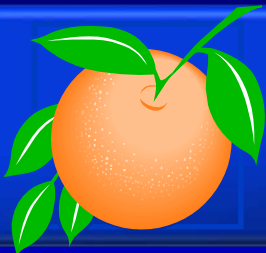
Additionally, a one (1) waiver from Orange County Code Section 38-1384(i)(4) relating to vehicular access is being requested.



Hickory Nut Estates PD / Hickory Nut Estates Preliminary Subdivision Plan (PSP)

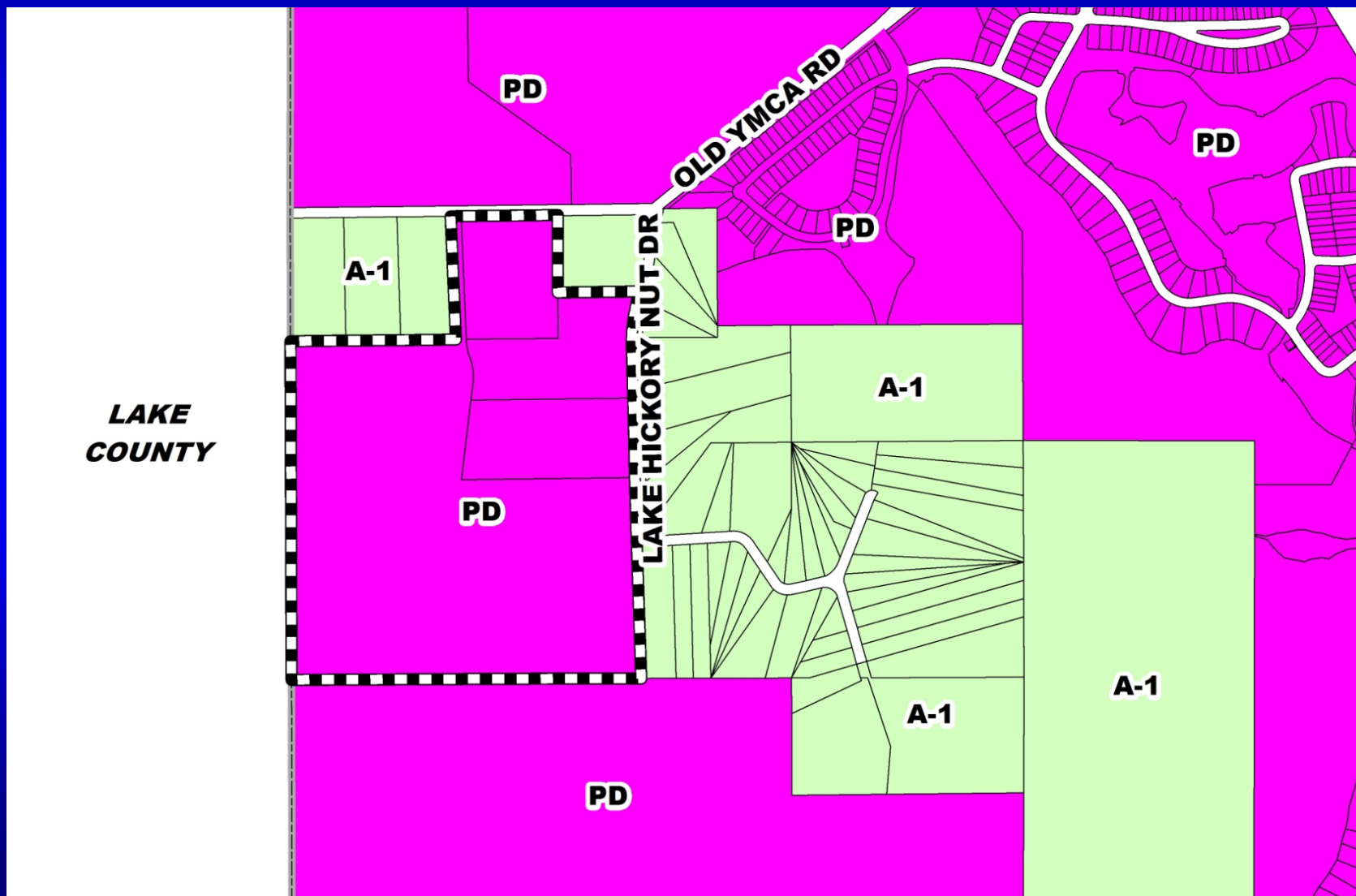
Future Land Use Map





Hickory Nut Estates PD / Hickory Nut Estates Preliminary Subdivision Plan (PSP)

Zoning Map

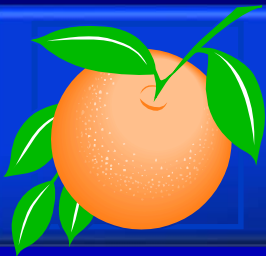




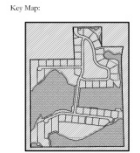
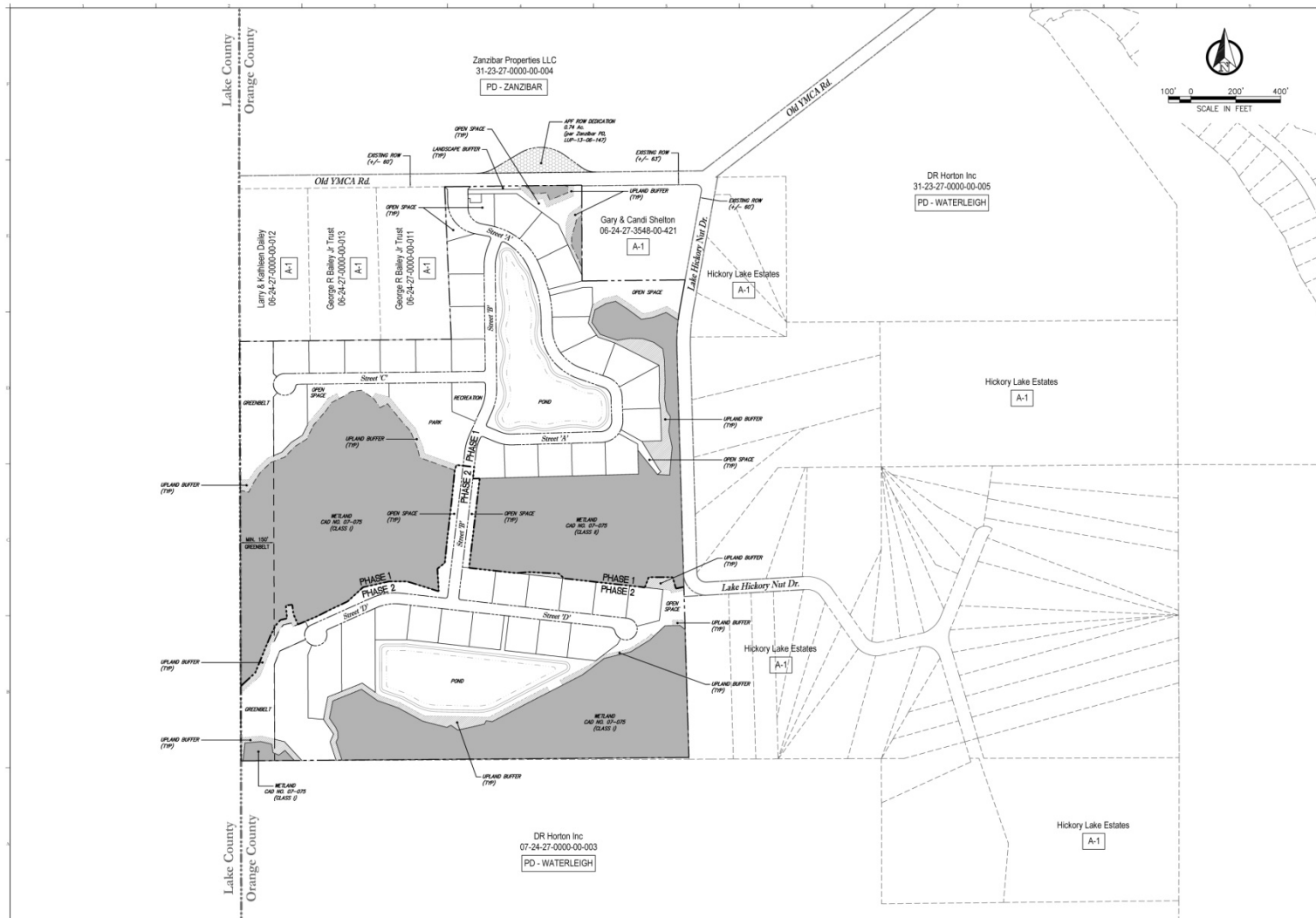
Hickory Nut Estates PD / Hickory Nut Estates Preliminary Subdivision Plan (PSP)

Aerial Map





Hickory Nut Estates PD / Hickory Nut Estates Preliminary Subdivision Plan (PSP)



Consultant:

1. SUBMIT	SUBMIT TO ORANGE COUNTY
2. SUBMIT	SUBMIT TO ORANGE COUNTY
3. SUBMIT	SUBMIT TO ORANGE COUNTY
4. SUBMIT	SUBMIT TO ORANGE COUNTY
5. SUBMIT	SUBMIT TO ORANGE COUNTY
6. SUBMIT	SUBMIT TO ORANGE COUNTY
7. SUBMIT	SUBMIT TO ORANGE COUNTY
8. SUBMIT	SUBMIT TO ORANGE COUNTY
9. SUBMIT	SUBMIT TO ORANGE COUNTY
10. SUBMIT	SUBMIT TO ORANGE COUNTY
11. SUBMIT	SUBMIT TO ORANGE COUNTY
12. SUBMIT	SUBMIT TO ORANGE COUNTY
13. SUBMIT	SUBMIT TO ORANGE COUNTY
14. SUBMIT	SUBMIT TO ORANGE COUNTY
15. SUBMIT	SUBMIT TO ORANGE COUNTY
16. SUBMIT	SUBMIT TO ORANGE COUNTY
17. SUBMIT	SUBMIT TO ORANGE COUNTY
18. SUBMIT	SUBMIT TO ORANGE COUNTY
19. SUBMIT	SUBMIT TO ORANGE COUNTY
20. SUBMIT	SUBMIT TO ORANGE COUNTY
21. SUBMIT	SUBMIT TO ORANGE COUNTY
22. SUBMIT	SUBMIT TO ORANGE COUNTY
23. SUBMIT	SUBMIT TO ORANGE COUNTY
24. SUBMIT	SUBMIT TO ORANGE COUNTY
25. SUBMIT	SUBMIT TO ORANGE COUNTY
26. SUBMIT	SUBMIT TO ORANGE COUNTY
27. SUBMIT	SUBMIT TO ORANGE COUNTY
28. SUBMIT	SUBMIT TO ORANGE COUNTY
29. SUBMIT	SUBMIT TO ORANGE COUNTY
30. SUBMIT	SUBMIT TO ORANGE COUNTY
31. SUBMIT	SUBMIT TO ORANGE COUNTY
32. SUBMIT	SUBMIT TO ORANGE COUNTY
33. SUBMIT	SUBMIT TO ORANGE COUNTY
34. SUBMIT	SUBMIT TO ORANGE COUNTY
35. SUBMIT	SUBMIT TO ORANGE COUNTY
36. SUBMIT	SUBMIT TO ORANGE COUNTY
37. SUBMIT	SUBMIT TO ORANGE COUNTY
38. SUBMIT	SUBMIT TO ORANGE COUNTY
39. SUBMIT	SUBMIT TO ORANGE COUNTY
40. SUBMIT	SUBMIT TO ORANGE COUNTY
41. SUBMIT	SUBMIT TO ORANGE COUNTY
42. SUBMIT	SUBMIT TO ORANGE COUNTY
43. SUBMIT	SUBMIT TO ORANGE COUNTY
44. SUBMIT	SUBMIT TO ORANGE COUNTY
45. SUBMIT	SUBMIT TO ORANGE COUNTY
46. SUBMIT	SUBMIT TO ORANGE COUNTY
47. SUBMIT	SUBMIT TO ORANGE COUNTY
48. SUBMIT	SUBMIT TO ORANGE COUNTY
49. SUBMIT	SUBMIT TO ORANGE COUNTY
50. SUBMIT	SUBMIT TO ORANGE COUNTY
51. SUBMIT	SUBMIT TO ORANGE COUNTY
52. SUBMIT	SUBMIT TO ORANGE COUNTY
53. SUBMIT	SUBMIT TO ORANGE COUNTY
54. SUBMIT	SUBMIT TO ORANGE COUNTY
55. SUBMIT	SUBMIT TO ORANGE COUNTY
56. SUBMIT	SUBMIT TO ORANGE COUNTY
57. SUBMIT	SUBMIT TO ORANGE COUNTY
58. SUBMIT	SUBMIT TO ORANGE COUNTY
59. SUBMIT	SUBMIT TO ORANGE COUNTY
60. SUBMIT	SUBMIT TO ORANGE COUNTY
61. SUBMIT	SUBMIT TO ORANGE COUNTY
62. SUBMIT	SUBMIT TO ORANGE COUNTY
63. SUBMIT	SUBMIT TO ORANGE COUNTY
64. SUBMIT	SUBMIT TO ORANGE COUNTY
65. SUBMIT	SUBMIT TO ORANGE COUNTY
66. SUBMIT	SUBMIT TO ORANGE COUNTY
67. SUBMIT	SUBMIT TO ORANGE COUNTY
68. SUBMIT	SUBMIT TO ORANGE COUNTY
69. SUBMIT	SUBMIT TO ORANGE COUNTY
70. SUBMIT	SUBMIT TO ORANGE COUNTY
71. SUBMIT	SUBMIT TO ORANGE COUNTY
72. SUBMIT	SUBMIT TO ORANGE COUNTY
73. SUBMIT	SUBMIT TO ORANGE COUNTY
74. SUBMIT	SUBMIT TO ORANGE COUNTY
75. SUBMIT	SUBMIT TO ORANGE COUNTY
76. SUBMIT	SUBMIT TO ORANGE COUNTY
77. SUBMIT	SUBMIT TO ORANGE COUNTY
78. SUBMIT	SUBMIT TO ORANGE COUNTY
79. SUBMIT	SUBMIT TO ORANGE COUNTY
80. SUBMIT	SUBMIT TO ORANGE COUNTY
81. SUBMIT	SUBMIT TO ORANGE COUNTY
82. SUBMIT	SUBMIT TO ORANGE COUNTY
83. SUBMIT	SUBMIT TO ORANGE COUNTY
84. SUBMIT	SUBMIT TO ORANGE COUNTY
85. SUBMIT	SUBMIT TO ORANGE COUNTY
86. SUBMIT	SUBMIT TO ORANGE COUNTY
87. SUBMIT	SUBMIT TO ORANGE COUNTY
88. SUBMIT	SUBMIT TO ORANGE COUNTY
89. SUBMIT	SUBMIT TO ORANGE COUNTY
90. SUBMIT	SUBMIT TO ORANGE COUNTY
91. SUBMIT	SUBMIT TO ORANGE COUNTY
92. SUBMIT	SUBMIT TO ORANGE COUNTY
93. SUBMIT	SUBMIT TO ORANGE COUNTY
94. SUBMIT	SUBMIT TO ORANGE COUNTY
95. SUBMIT	SUBMIT TO ORANGE COUNTY
96. SUBMIT	SUBMIT TO ORANGE COUNTY
97. SUBMIT	SUBMIT TO ORANGE COUNTY
98. SUBMIT	SUBMIT TO ORANGE COUNTY
99. SUBMIT	SUBMIT TO ORANGE COUNTY
100. SUBMIT	SUBMIT TO ORANGE COUNTY

Project Name:
HICKORY NUT ESTATES
PSP-16-06-222

Submitted To:
ORANGE COUNTY, FL
Sheet Title:
MASTER SITE PLAN

Sheet No.:
C2.00

DATE: January 5, 2017

POULOS & BENNETT
Poulos & Bennett, LLC
2802 E. Longview Dr., Orlando, FL 32803
Tel: 407.487.2004 www.poulosandbennett.com
Eng. Reg. No. 26567



Action Requested

Make a finding of consistency with the Comprehensive Plan (CP) and approve the Hickory Nut Estates Planned Development (PD) / Hickory Nut Estates Preliminary Subdivision Plan (PSP) dated “Received January 9, 2017”, subject to the conditions listed under the DRC Recommendation in the Staff Report.

District 1