

A stylized illustration of an orange with several leaves, rendered in shades of blue and yellow, serves as a background for the text.

Board of County Commissioners

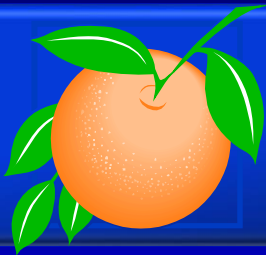
Public Hearings

April 11, 2017

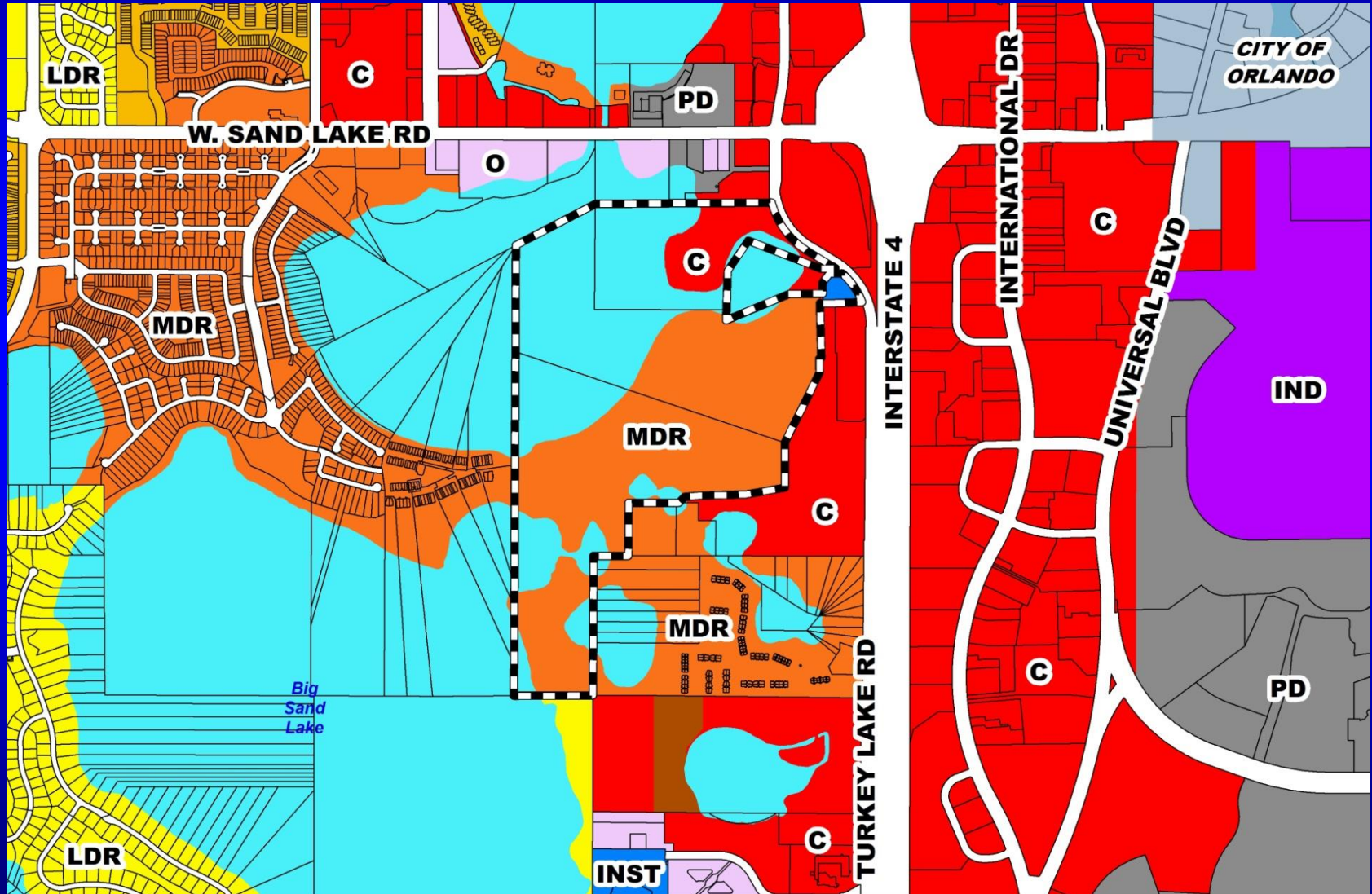


Grenada PD / Parcels E, F, & a Portion of Parcel G - Infrastructure Preliminary Subdivision Plan (PSP)

Case:	PSP-16-11-380
Project Name:	Grenada PD / Parcels E, F, & a Portion of Parcel G - Infrastructure PSP
Applicant:	Daniel T. O'Keefe, Shutts & Bowen, LLP
District:	1
Acreage:	166.499 gross acres
Location:	South of Sand Lake Road / West of Turkey Lake Road
Request:	To subdivide 166.499 acres into three (3) future development lots, associated tracts, and infrastructure.

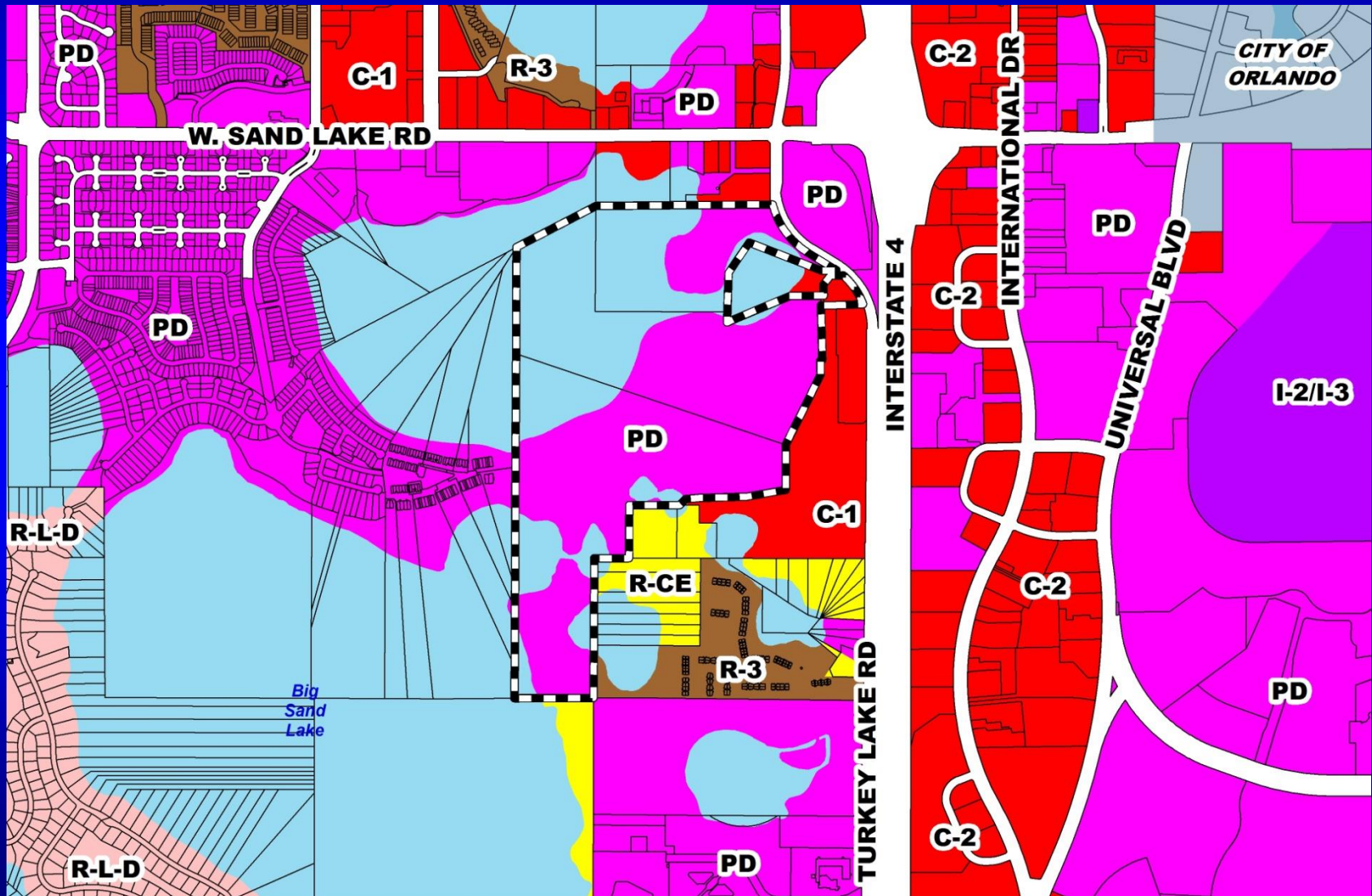


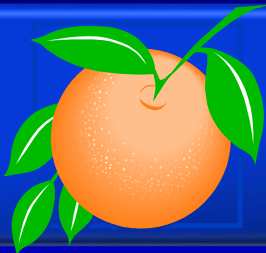
Grenada PD / Parcels E, F, & a Portion of Parcel G – Infrastructure Preliminary Subdivision Plan (PSP) Future Land Use Map



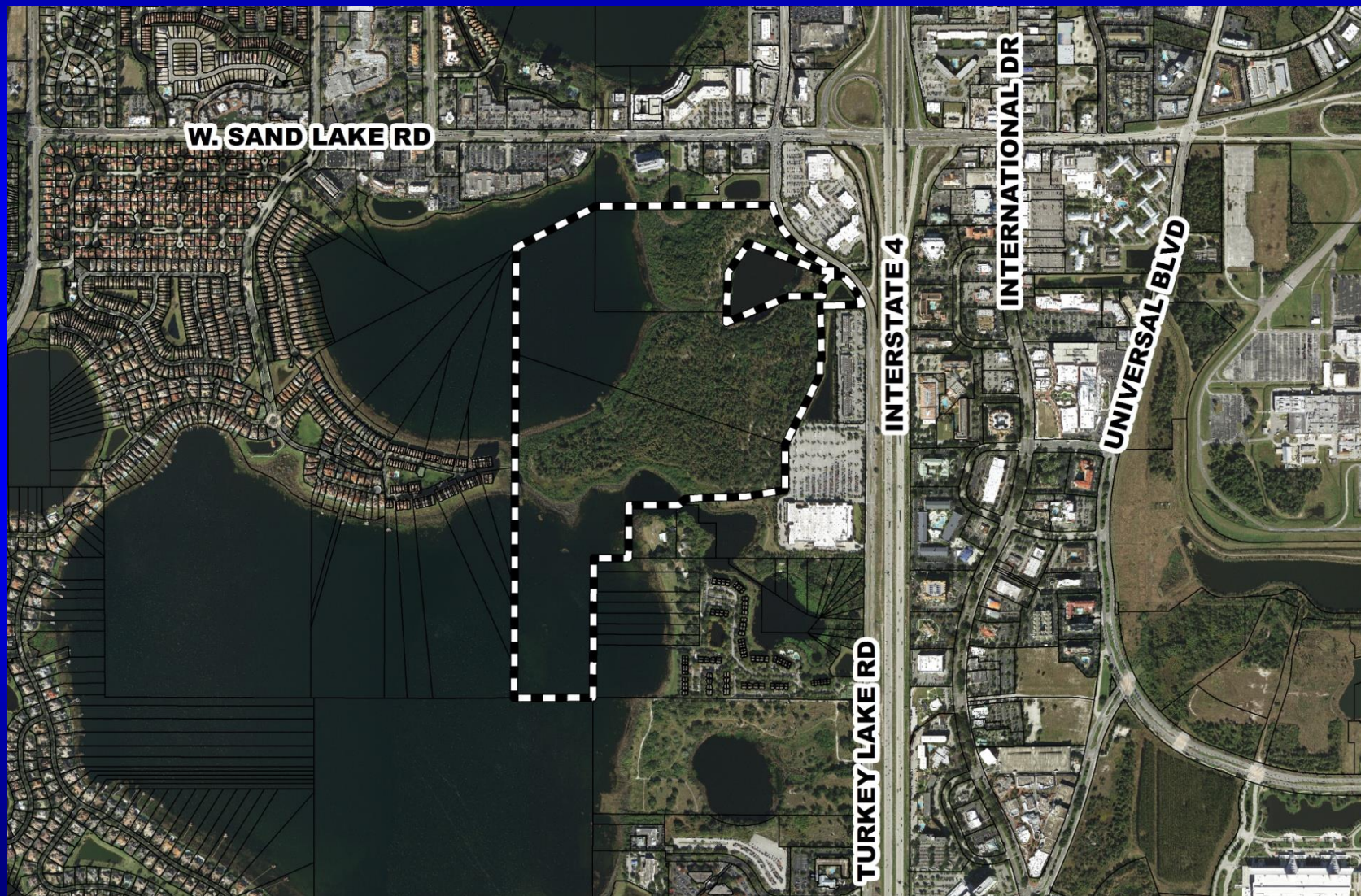


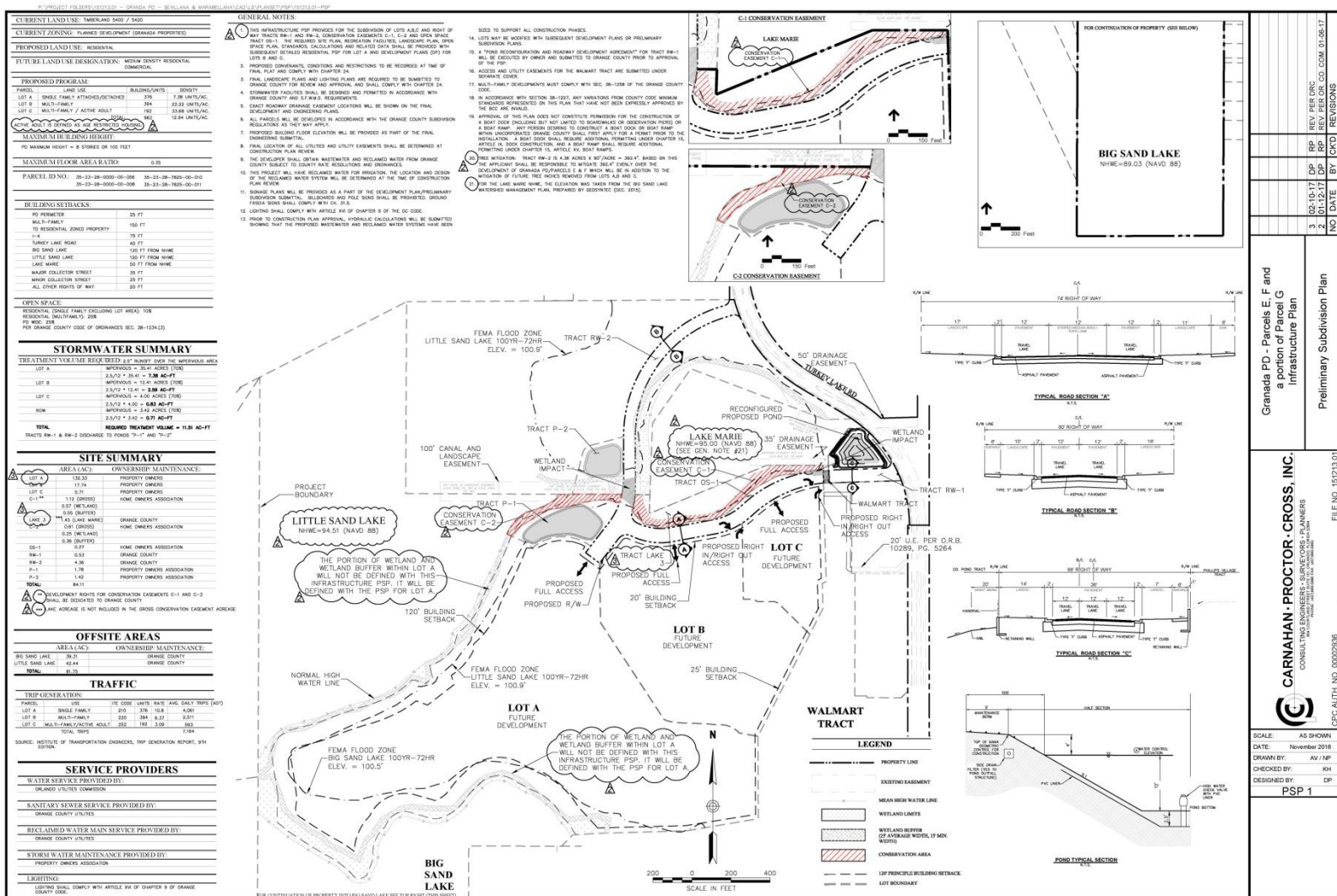
Grenada PD / Parcels E, F, & a Portion of Parcel G – Infrastructure Preliminary Subdivision Plan (PSP) Zoning Map





Grenada PD / Parcels E, F, & a Portion of Parcel G – Infrastructure Preliminary Subdivision Plan (PSP) Aerial Map







Action Requested

Make a finding of consistency with the Comprehensive Plan (CP) and approve the Grenada PD / Parcels E, F, & a Portion of Parcel G – Infrastructure PSP dated “Received February 13, 2017”, subject to the conditions listed under the DRC Recommendation in the Staff Report.

– AND –

Approve Consent Agenda Items D.18 and E.4.

District 1