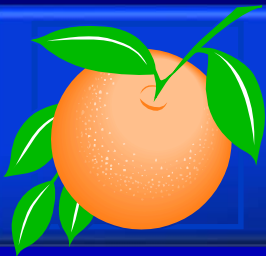




Board of County Commissioners

Public Hearings

May 23, 2017

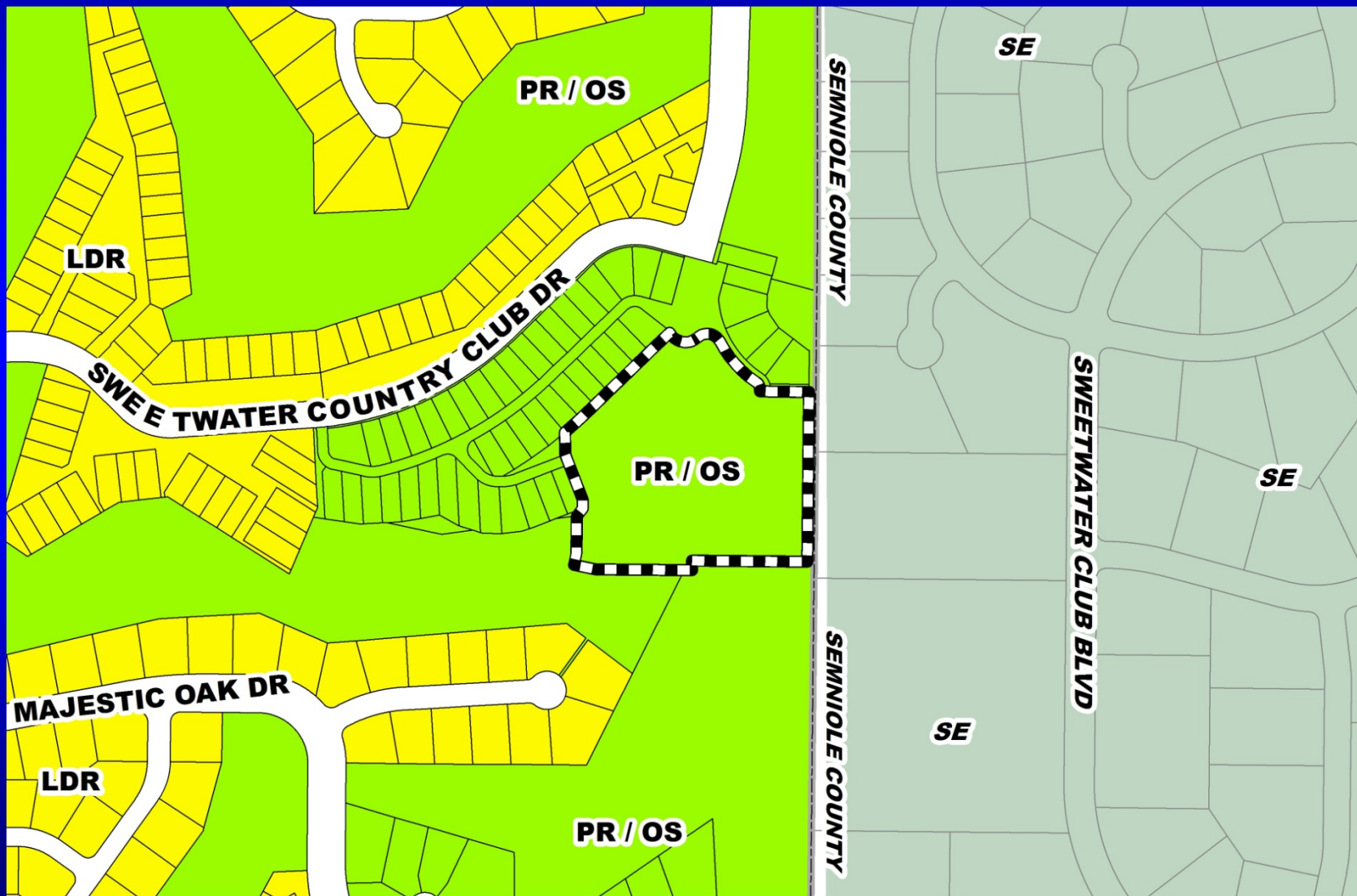


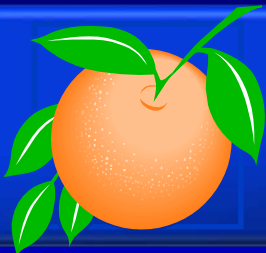
Sweetwater Golf & Country Club PD / The Reserve Preliminary Subdivision Plan / Development Plan

Case:	PSP-15-11-339
Project Name:	Sweetwater Golf & Country Club PD / The Reserve PSP/DP
Applicant:	Tina Lee, Ashton Residential Orlando, LLC
District:	2
Acreage:	12.47 gross acres (<i>including off-site work areas</i>) 7.164 gross acres (<i>excluding off-site work areas</i>)
Location:	South of Sweetwater Country Club Drive / West of Orange County / Seminole County Line
Request:	To subdivide 7.164 acres in order to construct 72 single- family attached residential dwelling units. This subdivision is proposed to be a gated community. Additionally, three (3) waivers from Orange County Code are also being requested.

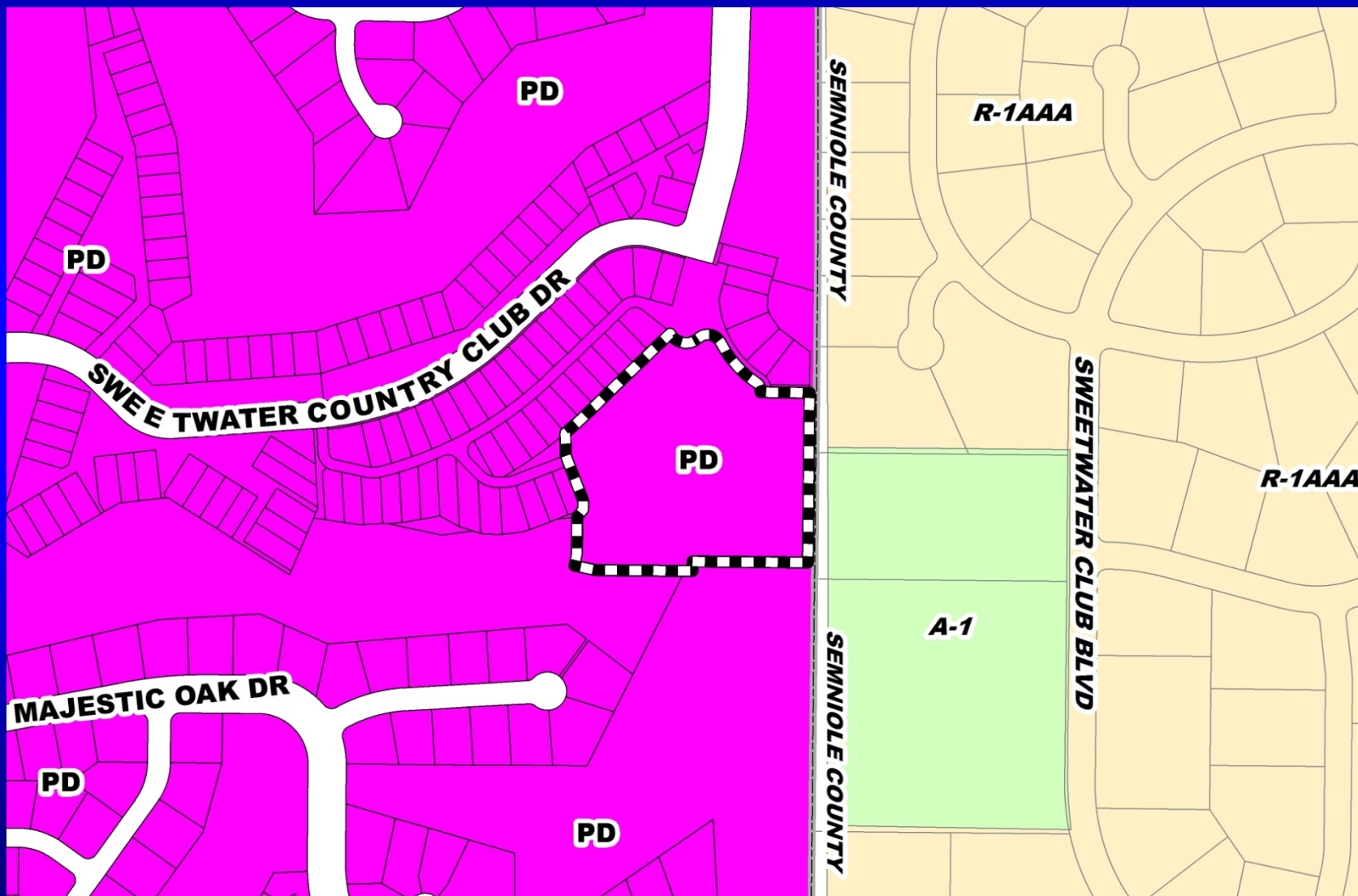


Sweetwater Golf & Country Club PD / The Reserve Preliminary Subdivision Plan / Development Plan Future Land Use Map



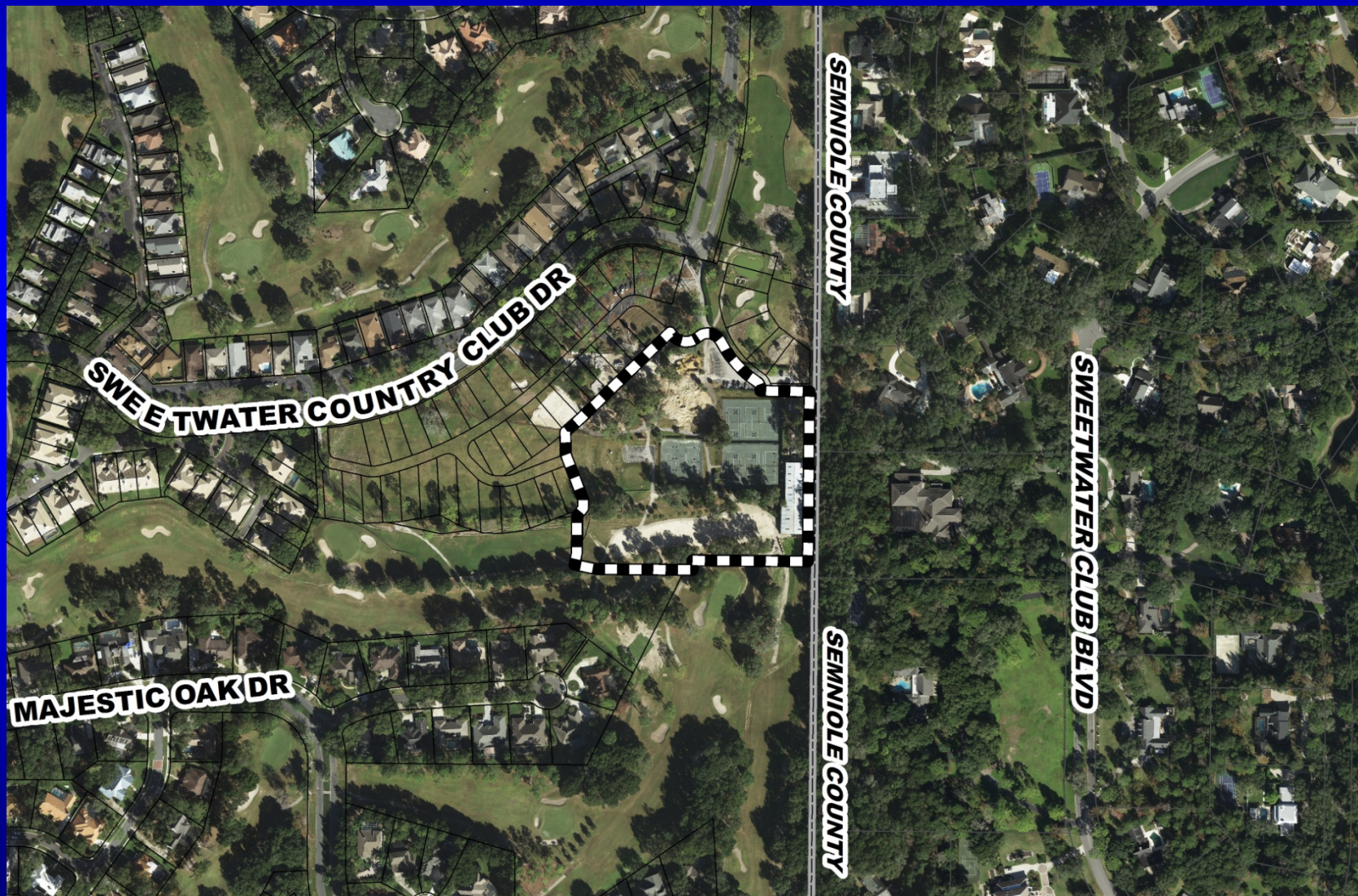


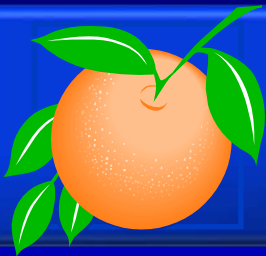
Sweetwater Golf & Country Club PD / The Reserve Preliminary Subdivision Plan / Development Plan Zoning Map



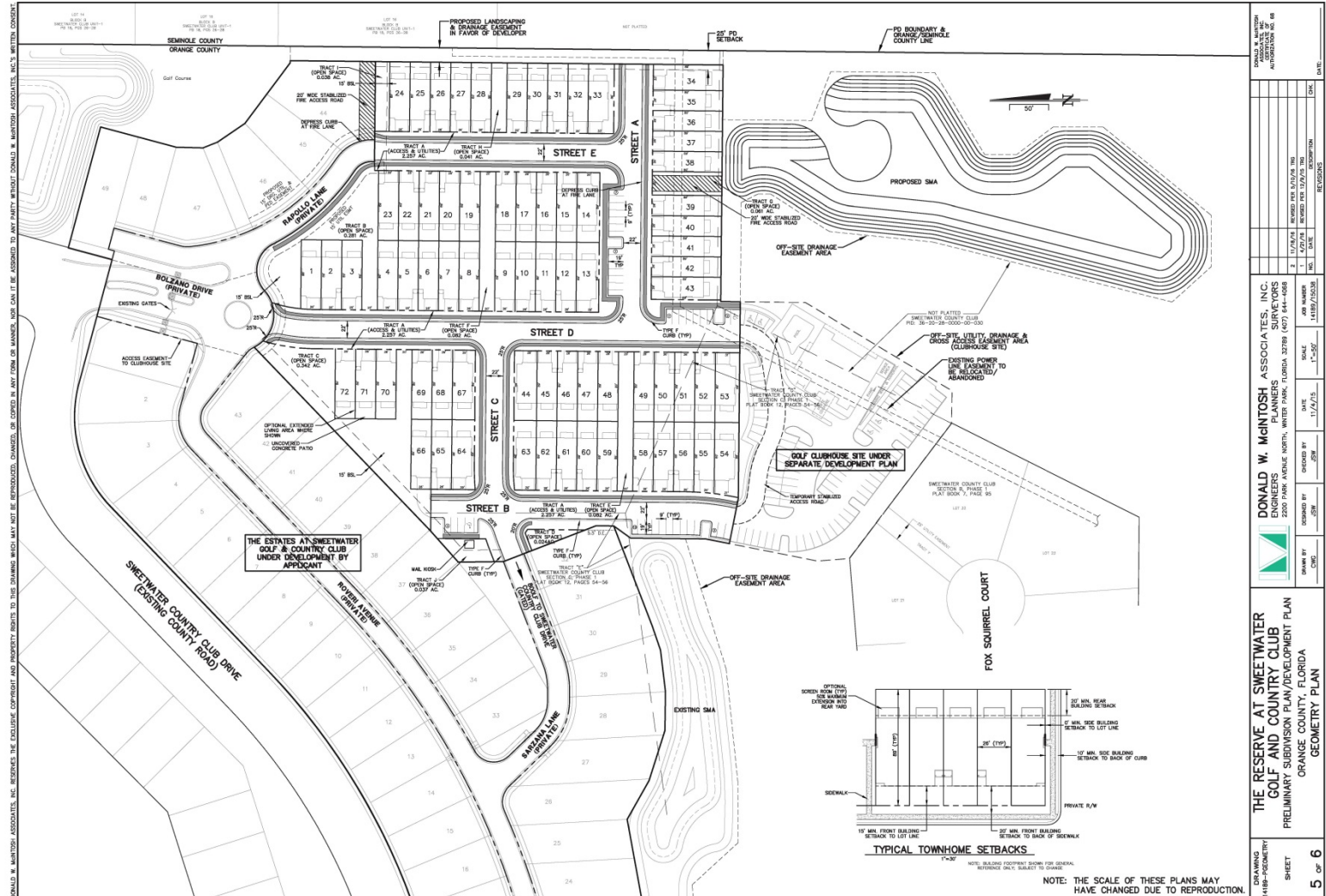


Sweetwater Golf & Country Club PD / The Reserve Preliminary Subdivision Plan / Development Plan Aerial Map





Sweetwater Golf & Country Club PD / The Reserve Preliminary Subdivision Plan / Development Plan





Action Requested

Make a finding of consistency with the Comprehensive Plan (CP) and approve the Sweetwater Golf & Country Club PD / The Reserve PSP / DP dated “Received January 30, 2017”, subject to the conditions listed under the DRC Recommendation in the Staff Report

District 2