

The background of the slide features a large, faint, blue outline of the Orange County Seal. The seal depicts an orange fruit with a stem and several leaves, all enclosed within a circular border.

Richard Crotty Parkway (East-West Road)

Orange County
Board of County Commissioners

June 6, 2017



Presentation Outline

- Project Background
- Project Status
- Action Requested





Presentation Outline

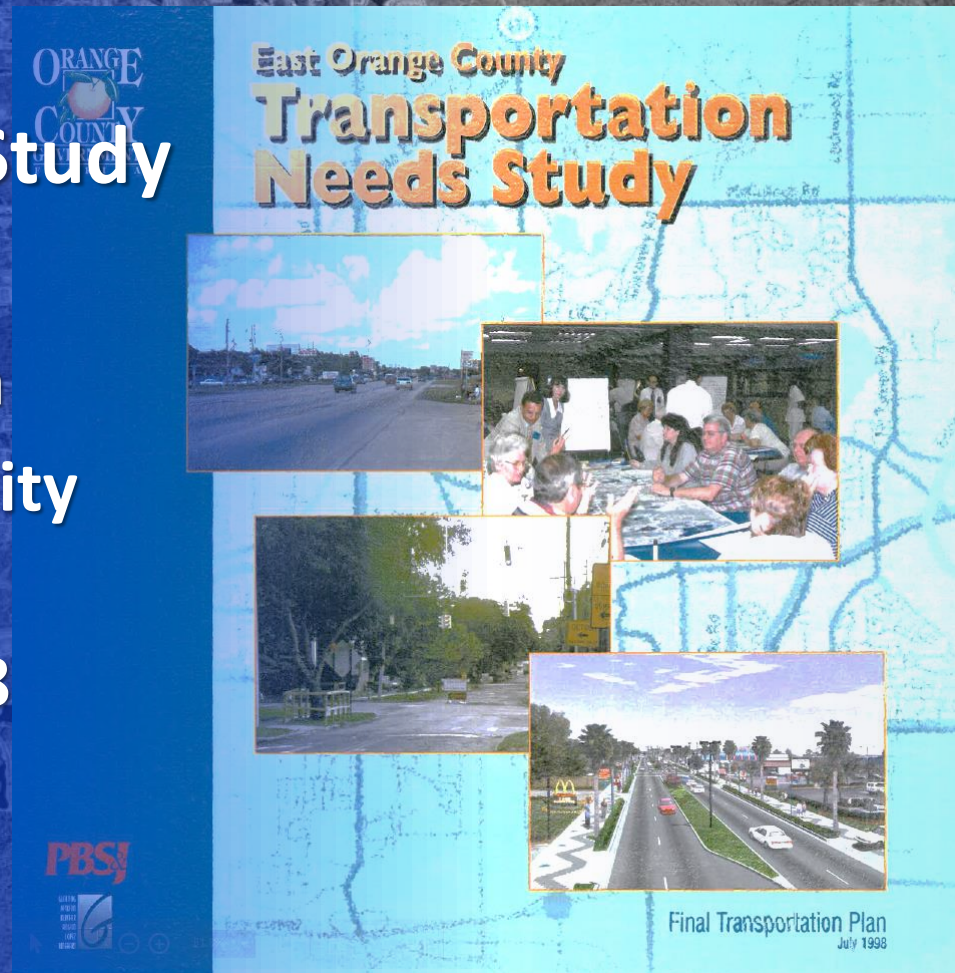
- Project Background
- Project Status
- Action Requested





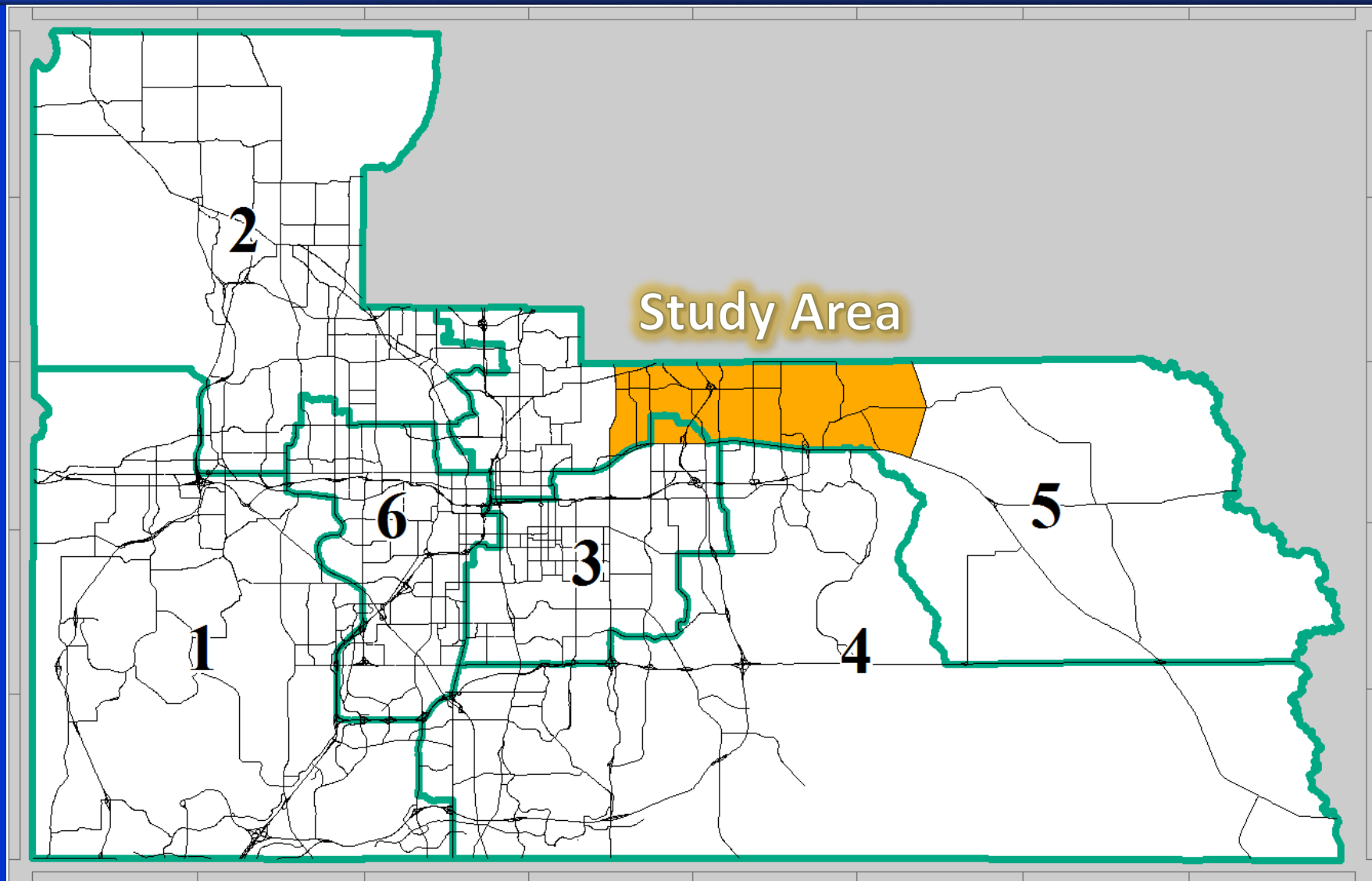
Project Background

- **East Orange County Transportation Needs Study**
 - Initiated October 1996
 - 20 Year Planning Horizon
 - Address Increased Mobility Demands
 - BCC Approved April 1998
 - Recommendations Incorporated Into Comprehensive Plan



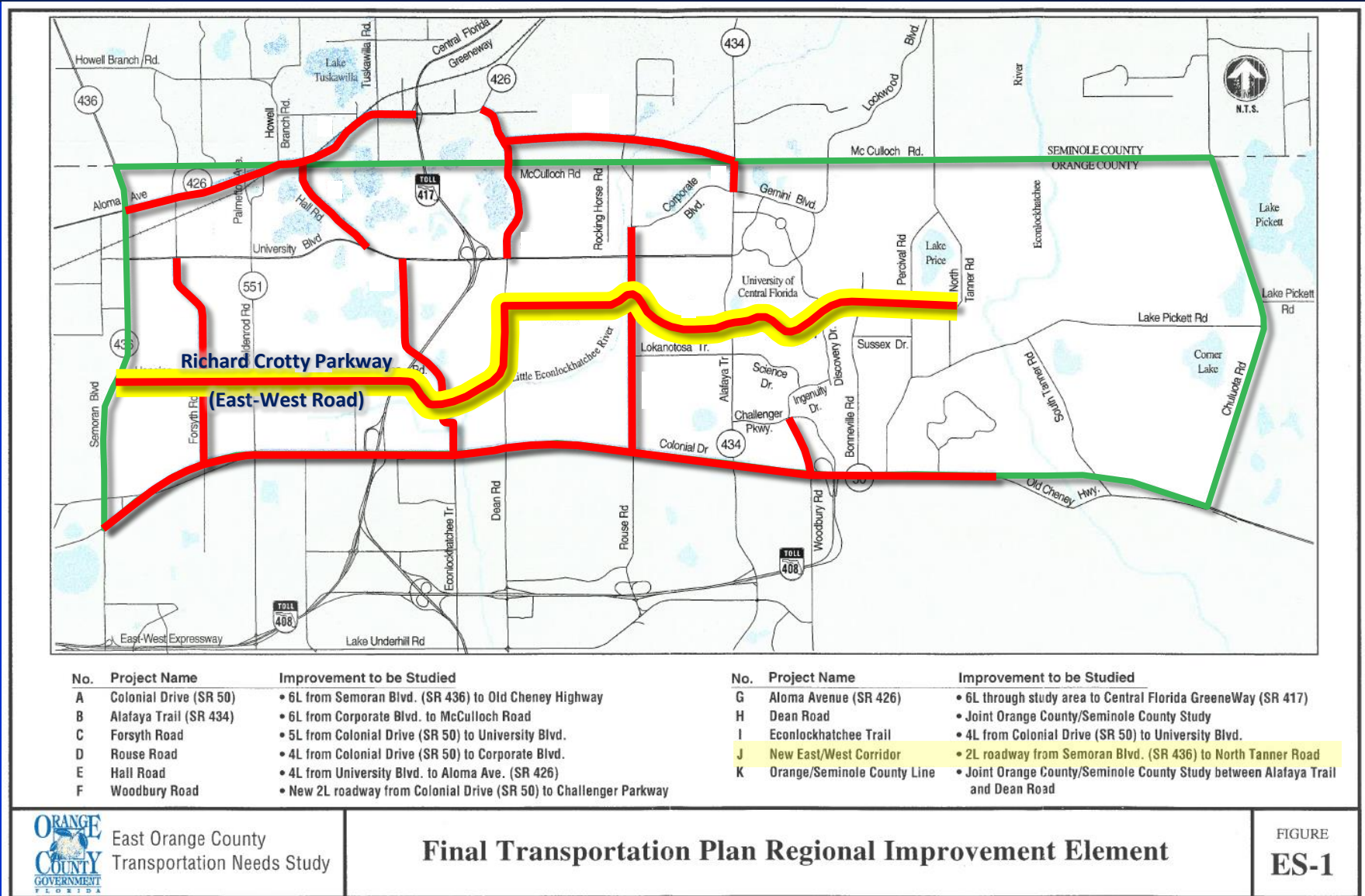


Project Background





Project Background

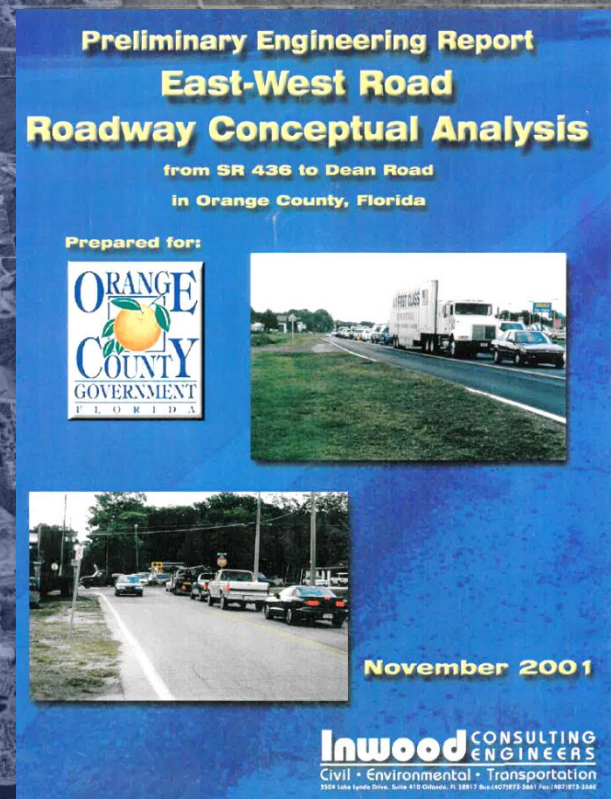




Project Background

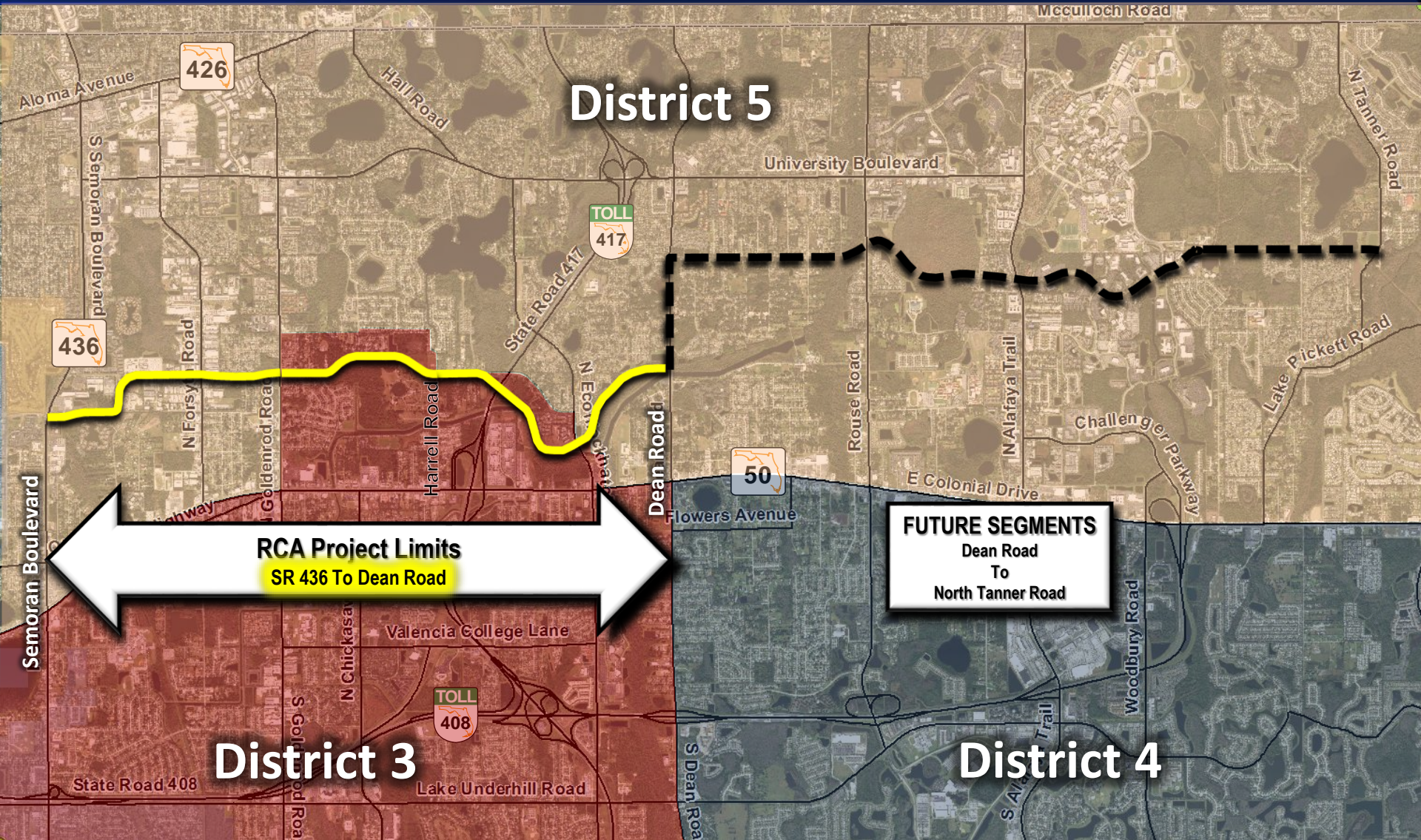
- **East-West Road RCA Study**
 - **Started September 1999**
 - Evaluation of: Social, Economic, Environmental, Traffic, Land Use and Roadway Features
 - **Study Recommended a New Four - Lane Road**
 - SR 436 to Dean Road
 - **BCC Approved June 2001**

BCC Action (10/14/10) Named Road Segment as Richard Crotty Parkway





Project Background





Presentation Outline

- Project Background
- Project Status
- Action Requested





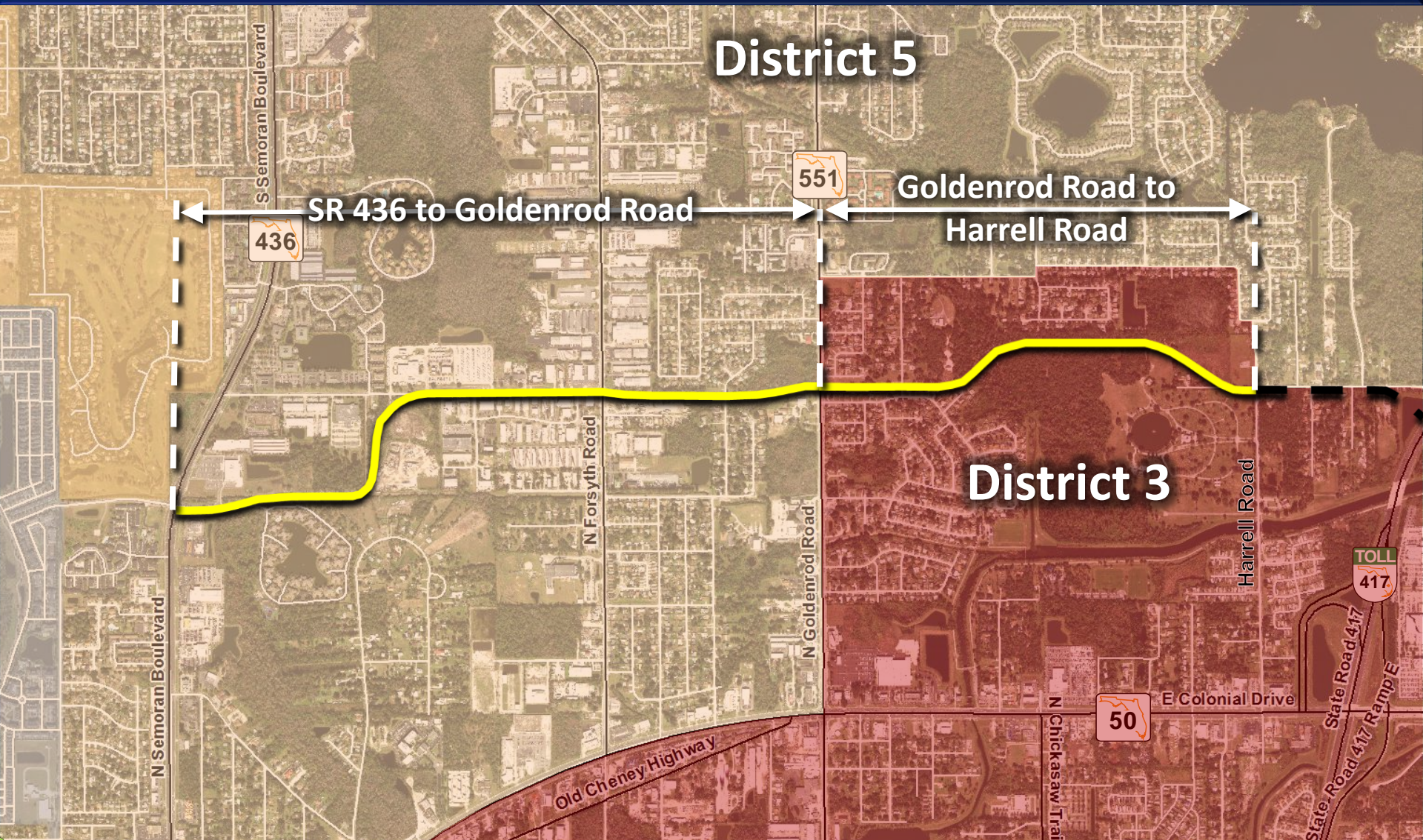
Project Status

- **Richard Crotty Parkway**
 - **SR 436 to Harrell Road**
 - **Design Complete**
 - **Amendment Purpose**
 - **Update Plans to Current Design Standards**
 - **Changes Caused by Development**
 - **Renew Permits**





Project Status





Presentation Outline

- Project Background
- Project Status
- Action Requested





Action Requested

**Approval of Amendment No. 6, Contract Y2-827,
Design Services for Richard Crotty Parkway
(Formerly Known as East-West Road) from State
Road 436 to West of Harrell Road with Inwood
Consulting Engineers, Inc. in the Amount of
\$647,288.77 for a Revised Contract Amount of
\$2,738,631.23.**

The background of the slide features a large, faint, blue outline of the Orange County Seal. The seal depicts an orange fruit with a stem and several leaves, all enclosed within a circular border.

Richard Crotty Parkway (East-West Road)

Orange County
Board of County Commissioners

June 6, 2017