



Interoffice Memorandum

July 17, 2017

TO: Mayor Teresa Jacobs  
and Board of County Commissioners

FROM: Mark V. Massaro, P.E., Director, Public Works Department

CONTACT PERSON: Christine N. Lofye, P. E., Acting Manager  
Traffic Engineering Division

PHONE NUMBER: (407) 836-7890

SUBJ: Installation of Traffic Control Devices and "No Parking" signs in Parkside  
Phase 5 (Estates at Parkside)

Our staff recommends that the following traffic control devices be installed in Parkside  
Phase 5 (Estates at Parkside):

Install "STOP" signs on:

Bissell Street at Buenavista Woods Boulevard

The Fire Marshal recommends that the following "No Parking" signs be installed in  
Parkside Phase 5 (Estates at Parkside):

Install "NO PARKING" signs on:

Bissell Street

**Action Requested:** Approval of "Traffic Control Devices" and "No Parking" sign  
installations in Parkside Phase 5 (Estates at Parkside). District 1.

MVM/CNL/AHW/nad

Attachments

**ESTATES AT PARKSIDE**  
Situating in Section 10, Township 24 South, Range 28 East  
ORANGE COUNTY, FLORIDA  
DISTRICT # 1

**STOP/STREET**

<b><u>(1)</u></b>	<b>(Ft S)</b>	<b>on Bissell Street (9 inch)</b>	<b>10400</b>
		<b>at Buenavista Woods Boulevard (9 inch)</b>	<b>8000</b>

**SPEED LIMIT 25 MPH**

<b><u>(2)</u></b>	<b>(Ft S)</b>	<b>on Bissell Street</b>
		<b>at Buenavista Woods Boulevard</b>

**KEEP RIGHT**

<b><u>(3)</u></b>	<b>(Ft S)</b>	<b>on Bissell Street</b>
		<b>at Buenavista Woods Boulevard</b>

<b><u>(4)</u></b>	<b>(Ft N)</b>	<b>on Bissell Street</b>
		<b>at Ludington Circle</b>

**END OF ROAD**

<b><u>(5)</u></b>	<b>(Ft S)</b>	<b>on Bissell Street</b>
		<b>at Ludington Circle</b>

**NO PARKING with arrows**

<b><u>(6)</u></b>	<b>on Bissell Street from Buenavista Woods Boulevard extending 480ft south on the west side</b>
-------------------	---

ahw/

7/17/2017



PUBLIC WORKS DEPARTMENT  
JOSEPH C. KUNKEL, P.E., *Deputy Director*  
4200 South John Young Parkway • Orlando, Florida 32839-9205  
407-836-7972 • Fax 407-836-7766  
e-mail: Joe.Kunkel@ocfl.net

July 7, 2017

ORANGE COUNTY  
JUL 07 2017  
TRAFFIC ENGINEERING

Mr. Jeff Stalder  
Meritage Homes Corporation  
5337 Millenia Lakes Boulevard, Suite 160  
Orlando, Florida 32839

Subject: **Issuance of Certificate of Completion  
Parkside Phase 5**

Dear Mr. Stalder:

This letter verifies that on July 3, 2017 the County Engineer issued a Certificate of Completion for the construction of Parkside Phase 5.

Please be advised that this certificate does not relieve the developer of responsibility for the materials, workmanship, structural integrity, functioning, and maintenance of the required public improvements during the one (1) year period following issuance of the Certificate of Completion, or at the time the County Engineer issues the Approval for Maintenance.

Sincerely,

A handwritten signature in black ink, appearing to read "Joseph C. Kunkel".

Joseph C. Kunkel, P.E.

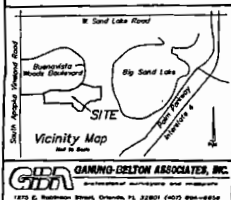
JCK/sa

Enclosure

cc: Robert Dudas, Utilities Distribution Section Manager  
Jorge Reyes, Utilities Supervisor, Field Services Division  
Brian Matejcek, Project Manager, Field Services Division  
County Surveyor, Survey Section, Public Works Engineering Division  
✓ Arthur Woods, Traffic Engineering Division  
Maricela Torres, Roads and Drainage Division  
George Shupp, Roads and Drainage Division (As-Built)  
Mirian Haughee, Stormwater Management Division  
Engineer of Record  
SJR/SF Water Management District

Situated in Section 10, Township 24 South, Range 28 East  
Orange County, Florida

5. Vehicular access locations onto Bissell Street from Lots 1 and 2 and onto Phillips Community Park Drive from Lots 24 through 38 (inclusive), are controlled by Orange County, Florida and permitted through the Orange County, Florida permitting process.



**NOTICE:**  
THIS PLAT, AS RECORDED IN ITS GRAPHIC FORM, IS THE OFFICIAL DEFINITION OF THE SUBDIVIDED LANDS DESCRIBED HEREIN AND WILL, IN NO CIRCUMSTANCES, BE SUPPLANTED IN AUTHORITY BY ANY OTHER GRAPHIC OR DIGITAL FORM OF THE PLAT. THERE MAY BE ADDITIONAL RESTRICTIONS THAT ARE NOT RECORDED ON THIS PLAT THAT MAY BE FOUND IN THE PUBLIC RECORDS OF THIS COUNTY.

THE PROPERTY SHOWN HEREON REPRESENTS A PORTION OF THE LANDS INCLUDED IN THE KARINA PARADE DEVELOPMENT (M) PARADE TRACT 2 PRELIMINARY SUBDIVISION PLAN / DEVELOPMENT PLAN (PSP/DP) PRELIMINARY SUBDIVISION PLAN, CASE # PSP 13-09-119 APPROVED BY ORANGE COUNTY BOARD OF COUNTY COMMISSIONERS JUNE 3, 2014 AND CDR 15-13-305 APPROVED BY ORANGE COUNTY BOARD OF COMMISSIONERS ON MAY 10, 2015.

This plat has been reviewed for conformity to Chapter 177 Florida Statutes.

County Surveyor Date

**CERTIFICATE OF APPROVAL  
BY COUNTY ENGINEER**

and  
Approved \_\_\_\_\_  
County Engineer Date

CERTIFICATE OF APPROVAL  
BY THE BOARD OF COUNTY COMMISSIONERS

THIS IS TO CERTIFY, that on \_\_\_\_\_ 19\_\_\_\_ the foregoing plan was approved by the Board of County Commissioners of Orange County, Florida.

ORANGE COUNTY

Attest: \_\_\_\_\_  
Clerk of the Board of County Commissioners

BY \_\_\_\_\_ AC.

CERTIFICATE OF SURVEYOR

This plot was prepared under my direction and supervision. This plot complies with all of the survey requirements of Chapter 177, Part 1, Florida Statutes.

Surveyor's Signature <u>R. CLAYTON GANUNG</u>	Date: <u>LS 4236</u>
Surveyor's Name <u>GANUNG-BELTON ASSOCIATES, INC.</u>	Surveyor's Registration Number <u>ID 7194</u>
Legal Entity's Name <u>1775 E. ROBINSON ST., ORLANDO, FLA. 32801</u>	Legal Entity's Cert. Of Auth. No.
Legal Entity's Address	

CERTIFICATE OF APPROVAL  
BY ZONING DIRECTOR

Examined  
and  
Approved \_\_\_\_\_  
Zoning Director Date

**CERTIFICATE OF COUNTY COMPTROLLER**

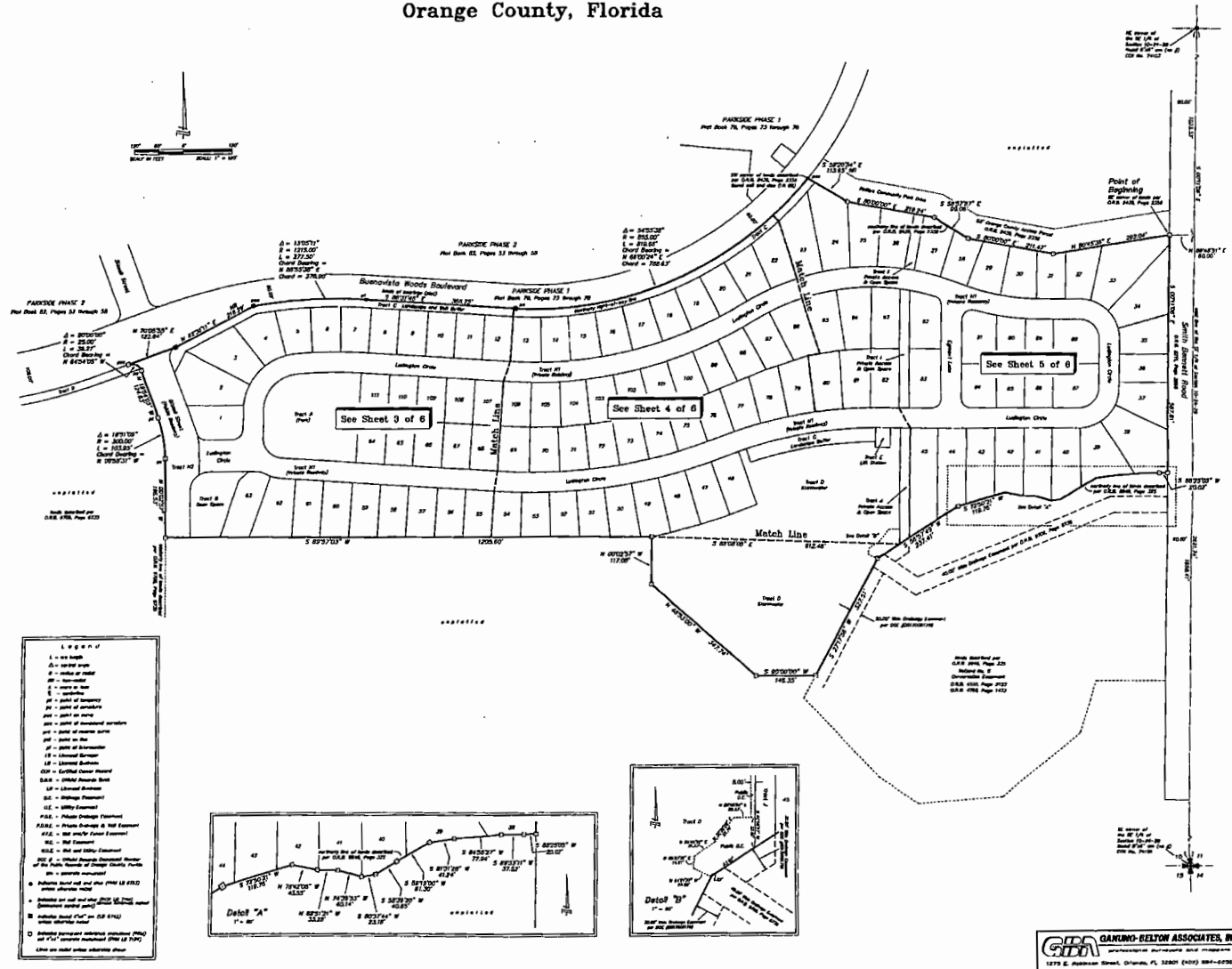
I HEREBY CERTIFY that the foregoing plot was  
recorded in the Orange County Official Records on  
\_\_\_\_\_ as File No. \_\_\_\_\_  
County Comptroller in and for Orange County, Florida

BY \_\_\_\_\_

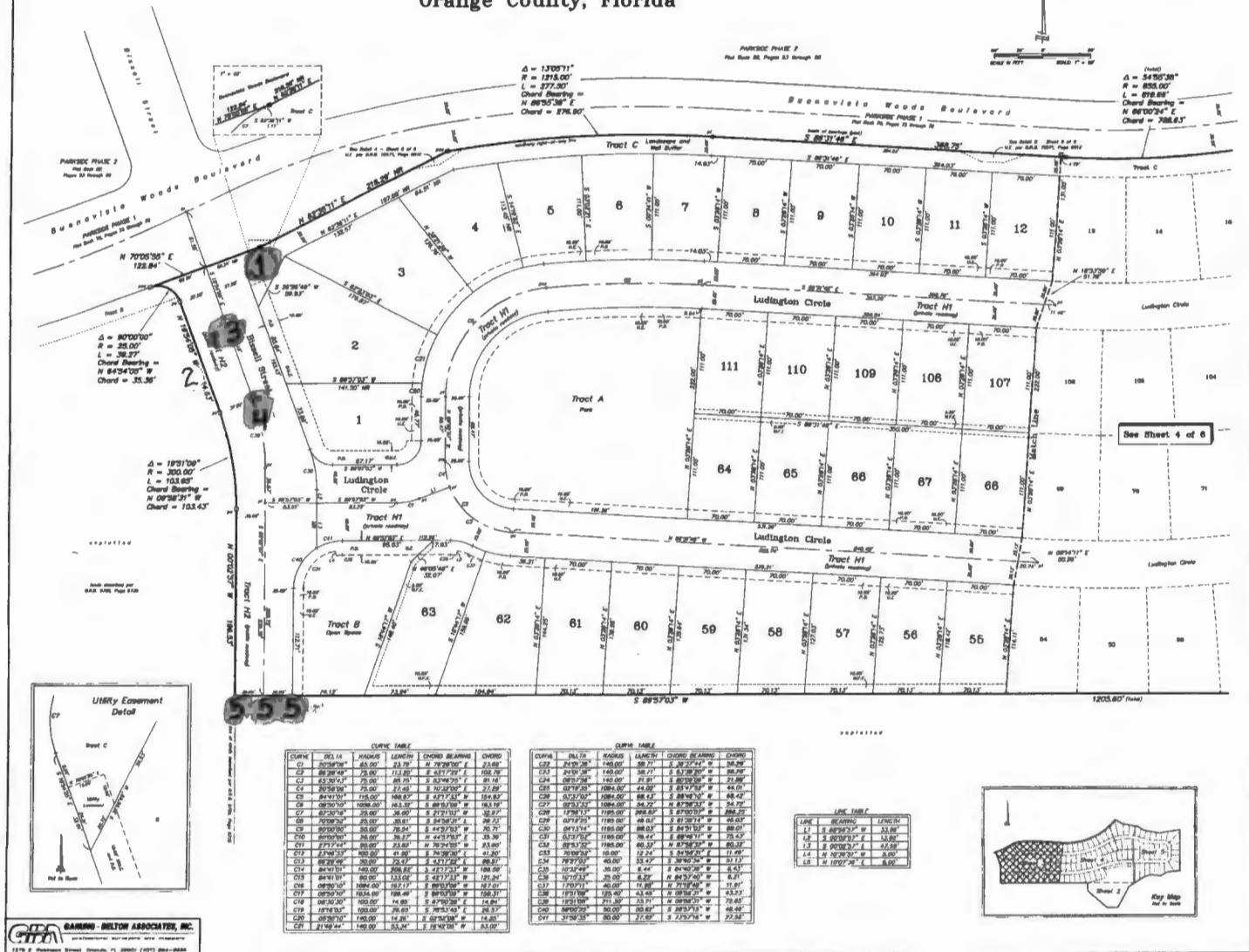
---

# **ESTATES AT PARKSIDE**

Situated in Section 10, Township 24 South, Range 28 East  
Orange County, Florida



Situated in Section 10, Township 24 South, Range 28 East  
Orange County, Florida

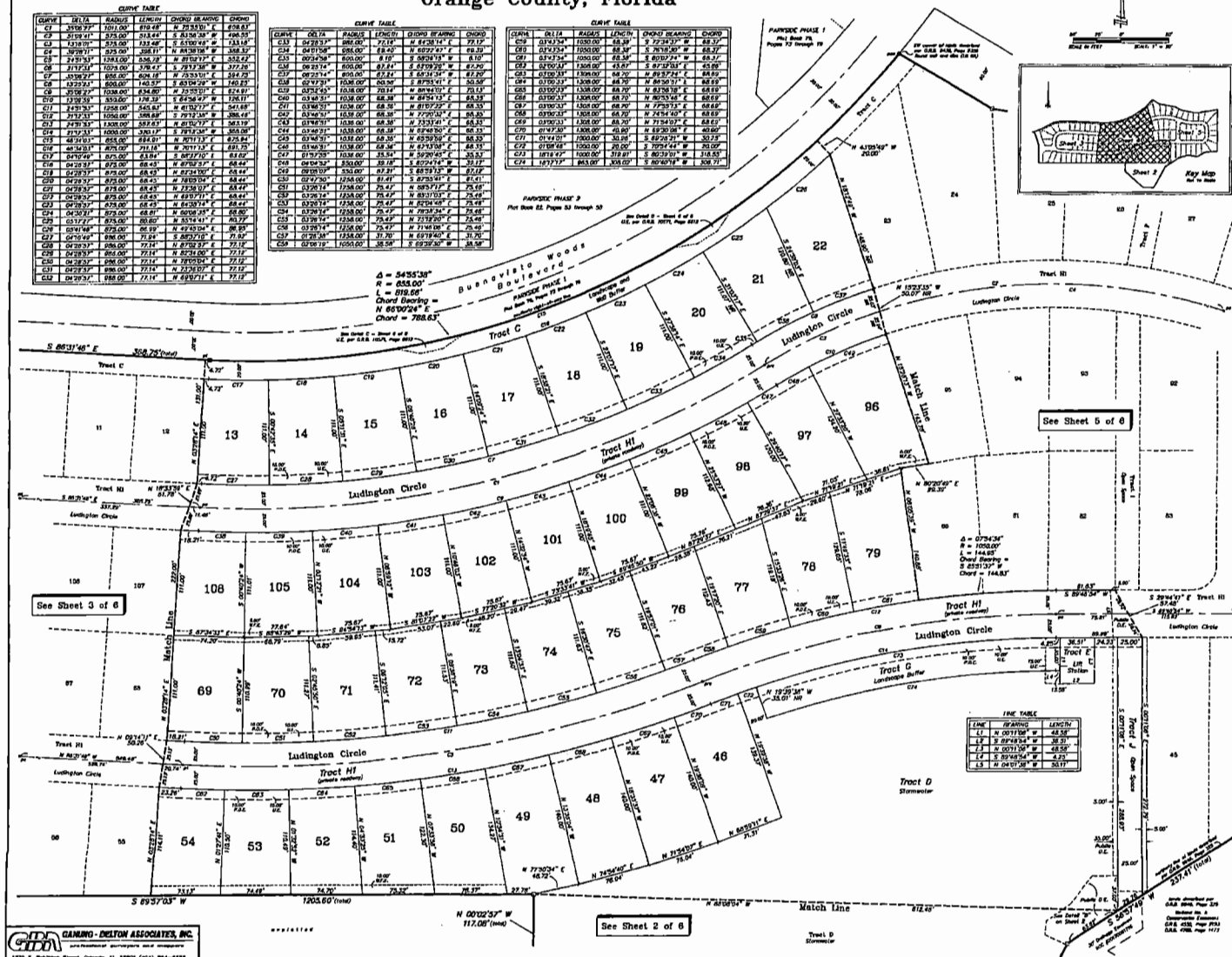


Situated in Section 10, Township 24 South, Range 28 East  
Orange County, Florida

PAGE

[illegible]

COMP. TABLE				
CITY	DATE	TIME	LOCATION	REMARKS
C33	2/28/23	08:00	741A	# 4234 1A
C34	2/28/23	08:00	82A	# 4234 2A
C35	2/28/23	08:00	82A	# 4234 3A
C36	2/28/23	08:00	82A	# 4234 4A
C37	2/28/23	08:00	82A	# 4234 5A
C38	2/28/23	08:00	82A	# 4234 6A
C39	2/28/23	08:00	82A	# 4234 7A
C40	2/28/23	08:00	82A	# 4234 8A
C41	2/28/23	08:00	82A	# 4234 9A
C42	2/28/23	08:00	82A	# 4234 10A
C43	2/28/23	08:00	82A	# 4234 11A
C44	2/28/23	08:00	82A	# 4234 12A
C45	2/28/23	08:00	82A	# 4234 13A
C46	2/28/23	08:00	82A	# 4234 14A
C47	2/28/23	08:00	82A	# 4234 15A
C48	2/28/23	08:00	82A	# 4234 16A
C49	2/28/23	08:00	82A	# 4234 17A
C50	2/28/23	08:00	82A	# 4234 18A
C51	2/28/23	08:00	82A	# 4234 19A
C52	2/28/23	08:00	82A	# 4234 20A
C53	2/28/23	08:00	82A	# 4234 21A
C54	2/28/23	08:00	82A	# 4234 22A
C55	2/28/23	08:00	82A	# 4234 23A
C56	2/28/23	08:00	82A	# 4234 24A
C57	2/28/23	08:00	82A	# 4234 25A
C58	2/28/23	08:00	82A	# 4234 26A
C59	2/28/23	08:00	82A	# 4234 27A
C60	2/28/23	08:00	82A	# 4234 28A
C61	2/28/23	08:00	82A	# 4234 29A
C62	2/28/23	08:00	82A	# 4234 30A
C63	2/28/23	08:00	82A	# 4234 31A
C64	2/28/23	08:00	82A	# 4234 32A
C65	2/28/23	08:00	82A	# 4234 33A
C66	2/28/23	08:00	82A	# 4234 34A
C67	2/28/23	08:00	82A	# 4234 35A
C68	2/28/23	08:00	82A	# 4234 36A
C69	2/28/23	08:00	82A	# 4234 37A
C70	2/28/23	08:00	82A	# 4234 38A
C71	2/28/23	08:00	82A	# 4234 39A
C72	2/28/23	08:00	82A	# 4234 40A
C73	2/28/23	08:00	82A	# 4234 41A
C74	2/28/23	08:00	82A	# 4234 42A
C75	2/28/23	08:00	82A	# 4234 43A
C76	2/28/23	08:00	82A	# 4234 44A
C77	2/28/23	08:00	82A	# 4234 45A
C78	2/28/23	08:00	82A	# 4234 46A
C79	2/28/23	08:00	82A	# 4234 47A
C80	2/28/23	08:00	82A	# 4234 48A
C81	2/28/23	08:00	82A	# 4234 49A
C82	2/28/23	08:00	82A	# 4234 50A
C83	2/28/23	08:00	82A	# 4234 51A
C84	2/28/23	08:00	82A	# 4234 52A
C85	2/28/23	08:00	82A	# 4234 53A
C86	2/28/23	08:00	82A	# 4234 54A
C87	2/28/23	08:00	82A	# 4234 55A
C88	2/28/23	08:00	82A	# 4234 56A
C89	2/28/23	08:00	82A	# 4234 57A
C90	2/28/23	08:00	82A	# 4234 58A
C91	2/28/23	08:00	82A	# 4234 59A
C92	2/28/23	08:00	82A	# 4234 60A
C93	2/28/23	08:00	82A	# 4234 61A
C94	2/28/23	08:00	82A	# 4234 62A
C95	2/28/23	08:00	82A	# 4234 63A
C96	2/28/23	08:00	82A	# 4234 64A</

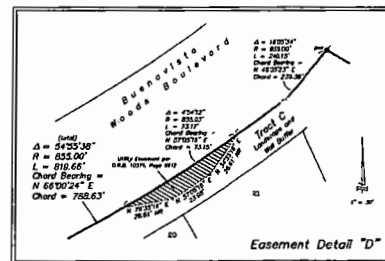
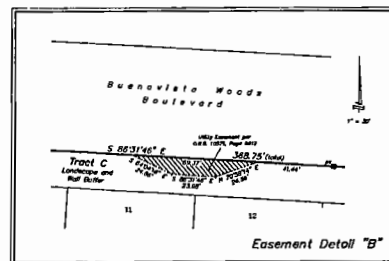
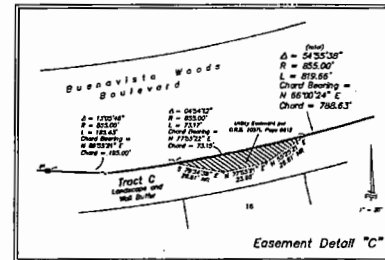
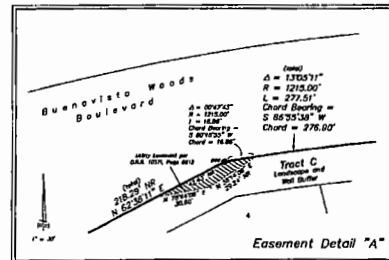
[illegible]





**ESTATES AT PARKSIDE**

Situated in Section 10, Township 24 South, Range 28 East  
Orange County, Florida



NO PARKING

Sheet 3 of 6

PLAT  
BOOK

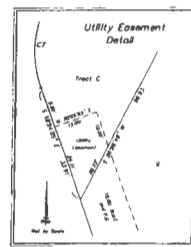
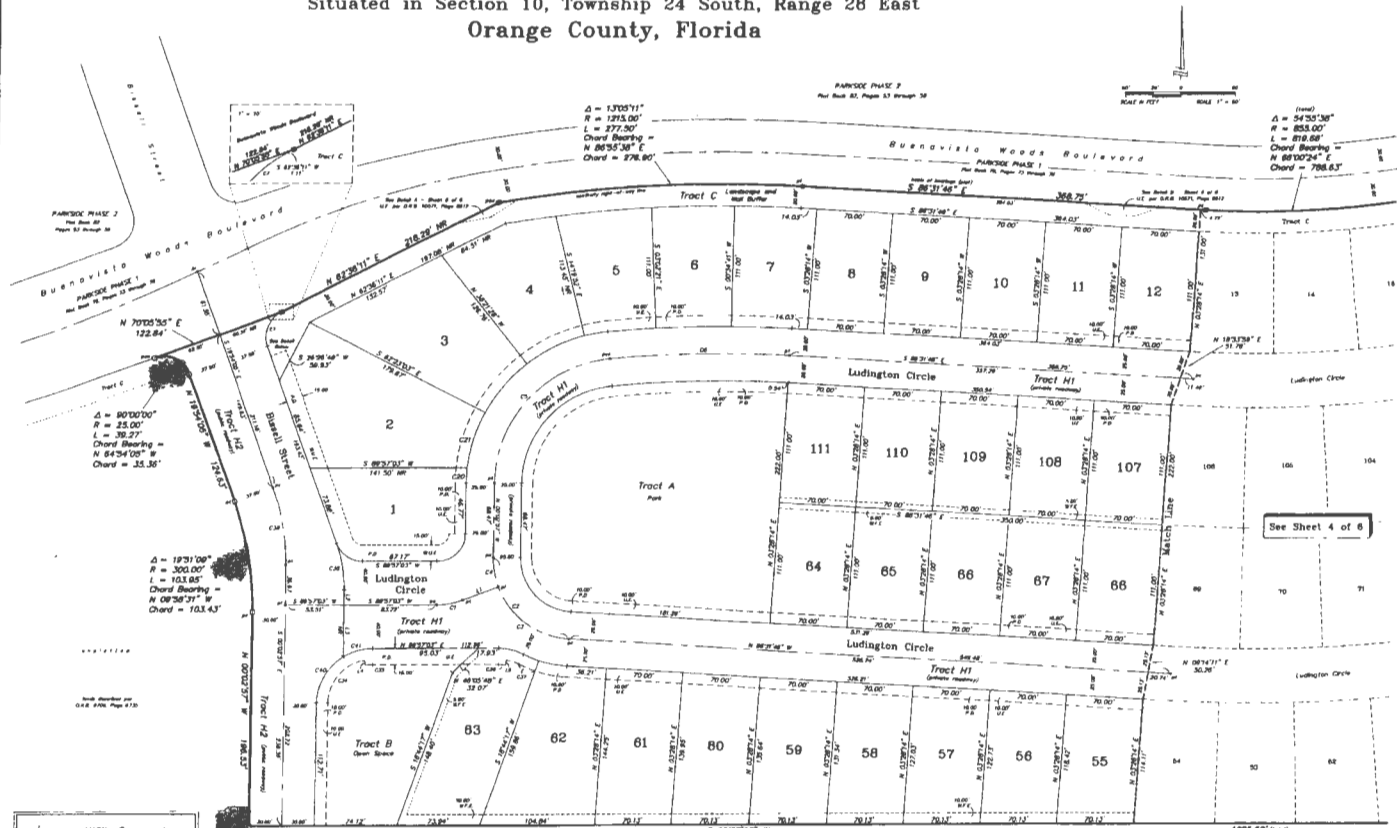
PAGE

# ESTATES AT PARKSIDE

Situated in Section 10, Township 24 South, Range 28 East  
Orange County, Florida

NO PARKING

NO PARKING



**BAMING - BOSTON ASSOCIATES, INC.**  
1000 E. ...

CHUNK	CHUNK	CHUNK	CHUNK	CHUNK
C1	20.00'	20.00'	20.00'	20.00'
C2	20.00'	20.00'	20.00'	20.00'
C3	20.00'	20.00'	20.00'	20.00'
C4	20.00'	20.00'	20.00'	20.00'
C5	20.00'	20.00'	20.00'	20.00'
C6	20.00'	20.00'	20.00'	20.00'
C7	20.00'	20.00'	20.00'	20.00'
C8	20.00'	20.00'	20.00'	20.00'
C9	20.00'	20.00'	20.00'	20.00'
C10	20.00'	20.00'	20.00'	20.00'
C11	20.00'	20.00'	20.00'	20.00'
C12	20.00'	20.00'	20.00'	20.00'
C13	20.00'	20.00'	20.00'	20.00'
C14	20.00'	20.00'	20.00'	20.00'
C15	20.00'	20.00'	20.00'	20.00'
C16	20.00'	20.00'	20.00'	20.00'
C17	20.00'	20.00'	20.00'	20.00'
C18	20.00'	20.00'	20.00'	20.00'
C19	20.00'	20.00'	20.00'	20.00'
C20	20.00'	20.00'	20.00'	20.00'
C21	20.00'	20.00'	20.00'	20.00'

CHUNK	CHUNK	CHUNK	CHUNK	CHUNK
C22	20.00'	20.00'	20.00'	20.00'
C23	20.00'	20.00'	20.00'	20.00'
C24	20.00'	20.00'	20.00'	20.00'
C25	20.00'	20.00'	20.00'	20.00'
C26	20.00'	20.00'	20.00'	20.00'
C27	20.00'	20.00'	20.00'	20.00'
C28	20.00'	20.00'	20.00'	20.00'
C29	20.00'	20.00'	20.00'	20.00'
C30	20.00'	20.00'	20.00'	20.00'
C31	20.00'	20.00'	20.00'	20.00'
C32	20.00'	20.00'	20.00'	20.00'
C33	20.00'	20.00'	20.00'	20.00'
C34	20.00'	20.00'	20.00'	20.00'
C35	20.00'	20.00'	20.00'	20.00'
C36	20.00'	20.00'	20.00'	20.00'
C37	20.00'	20.00'	20.00'	20.00'
C38	20.00'	20.00'	20.00'	20.00'
C39	20.00'	20.00'	20.00'	20.00'
C40	20.00'	20.00'	20.00'	20.00'
C41	20.00'	20.00'	20.00'	20.00'

CHUNK	CHUNK	CHUNK	CHUNK	CHUNK
C42	20.00'	20.00'	20.00'	20.00'
C43	20.00'	20.00'	20.00'	20.00'
C44	20.00'	20.00'	20.00'	20.00'
C45	20.00'	20.00'	20.00'	20.00'
C46	20.00'	20.00'	20.00'	20.00'
C47	20.00'	20.00'	20.00'	20.00'
C48	20.00'	20.00'	20.00'	20.00'
C49	20.00'	20.00'	20.00'	20.00'
C50	20.00'	20.00'	20.00'	20.00'
C51	20.00'	20.00'	20.00'	20.00'
C52	20.00'	20.00'	20.00'	20.00'
C53	20.00'	20.00'	20.00'	20.00'
C54	20.00'	20.00'	20.00'	20.00'
C55	20.00'	20.00'	20.00'	20.00'
C56	20.00'	20.00'	20.00'	20.00'
C57	20.00'	20.00'	20.00'	20.00'
C58	20.00'	20.00'	20.00'	20.00'
C59	20.00'	20.00'	20.00'	20.00'
C60	20.00'	20.00'	20.00'	20.00'
C61	20.00'	20.00'	20.00'	20.00'

