



Interoffice Memorandum

July 17, 2017

TO: Mayor Teresa Jacobs
and Board of County Commissioners

FROM: Mark V. Massaro, P.E., Director, Public Works Department

CONTACT PERSON: **Christine N. Lofye, P. E., Acting Manager**
Traffic Engineering Division

PHONE NUMBER: (407) 836-7890

SUBJ: **Installation of Traffic Control Devices and "No Parking" signs in Lakeview Pointe at Horizon West Phase 2B**

Our staff recommends that the following traffic control devices be installed in Lakeview Pointe at Horizon West Phase 2B:

Install "STOP" signs on:

Twilight Bay Drive at Murcott Blossom Boulevard
Lakeview Park Road at Twilight Bay Drive
Lakeview Park Road at Spring Park Drive
Lake Abbotts Drive at Twilight Bay Drive
Calaveras Street at Lake Abbotts Drive
Lake Abbotts Drive at Spring Park Drive
Calaveras Street (WB) at Twilight Bay Drive
Calaveras Street (EB) at Twilight Bay Drive
Twilight Bay Drive at Spring Park Drive
Calaveras Street at Larkspur Lake Drive
Spring Park Drive at Larkspur Lake Drive

The Fire Marshal recommends that the following "No Parking" signs be installed in Lakeview Pointe at Horizon West Phase 2B:

Install "NO PARKING" signs on:

Twilight Bay Drive
Lake Abbotts Drive
Calaveras Street
Larkspur Lake Drive
Spring Park Drive

Action Requested: Approval of Traffic Control Devices and "No Parking" sign installations in Lakeview Pointe at Horizon West Phase 2B. District 1.

MVM/CNL/AHW/nad

Attachments

LAKEVIEW POINTE AT HORIZON WEST PHASE 2B

**Situated in Sections 33 and 34, Township 23 South, Range 27 East
ORANGE COUNTY, FLORIDA
DISTRICT # 1**

STOP/STREET

<u>(1)</u>	(Ft S)	on Twilight Bay Drive at Murcott Blossom Boulevard	7200 14300
<u>(2)</u>	(Ft E)	on Lakeview Park Road at Twilight Bay Drive	14200 7200
<u>(3)</u>	(Ft W)	on Lakeview Park Road at Spring Park Drive	14100 7100
<u>(4)</u>	(Ft E)	on Lake Abbotts Drive at Twilight Bay Drive	14100 7200
<u>(5)</u>	(Ft W)	on Calaveras Street at Lake Abbotts Drive	7100 14100
<u>(6)</u>	(Ft N)	on Lake Abbotts Drive at Spring Park Drive	14000 7200
<u>(7)</u>	(Ft E)	on Calaveras Street (WB) at Twilight Bay Drive	7100 7300
<u>(8)</u>	(Ft W)	on Calaveras Street (EB) at Twilight Bay Drive	7100 7300
<u>(9)</u>	(Ft N)	on Twilight Bay Drive at Spring Park Drive	7400 7200
<u>(10)</u>	(Ft E)	on Calaveras Street at Larkspur Lake Drive	7200 4100
<u>(11)</u>	(Ft E)	on Spring Park Drive at Larkspur Lake Drive	7300 4100

STOP/ALLEYWAYS

<u>(12a)</u>	(Ft E)	on Suttonfield Alley at Twilight Bay Drive
<u>(13a)</u>	(Ft S)	on Ralphine Alley at Murcott Blossom Boulevard
<u>(14a)</u>	(Ft E)	on Suttonfield Alley (WB) at Ralphine Alley
<u>(15a)</u>	(Ft W)	on Suttonfield Alley (EB) at Ralphine Alley

- | | | |
|---------------------|---------------|--|
| <u>(16a)</u> | (Ft N) | on Ralphine Alley
at Lakeview Park Road |
| <u>(17a)</u> | (Ft W) | on Suttonfield Alley
at Spring Park Drive |
| <u>(18a)</u> | (Ft S) | on Lake Sonoma Alley
at Twilight Bay Drive |
| <u>(19a)</u> | (Ft N) | on Lake Sonoma Alley (SB)
at Calaveras Street |
| <u>(20a)</u> | (Ft S) | on Lake Sonoma Alley (NB)
at Calaveras Street |
| <u>(21a)</u> | (Ft N) | on Lake Sonoma Alley
at Spring Park Drive |

END OF ROAD TREATMENT

- | | | |
|--------------------|---------------|---|
| <u>(22)</u> | (Ft W) | on Murcott Blossom Boulevard
at Twilight Bay Drive |
| <u>(23)</u> | (Ft N) | on Larkspur Lake Drive
at Calaveras Street |

NO PARKING with arrows

- | | |
|--------------------|---|
| <u>(24)</u> | on Twilight Bay Drive from Murcott Blossom Boulevard extending west and south to Spring Park Drive on the south and east sides |
| <u>(25)</u> | on Lake Abbotts Drive from Twilight Bay Drive extending south to Spring Park Drive on the west side |
| <u>(26)</u> | on Calaveras Street from Lake Abbotts Drive extending west to Larkspur Lake Drive on the north side |
| <u>(27)</u> | on Larkspur Lake Drive from Enchanted Lake Drive extending north on the east side |
| <u>(28)</u> | on Spring Park Drive from Lake Abbotts Drive extending west to Larkspur Lake Drive on the north side |

ahw/

7/17/2017

LAKEVIEW POINTE AT HORIZON WEST PHASE 2B

Situated in Sections 33 and 34, Township 23 South, Range 27 East
Orange County, Florida

Legal Description

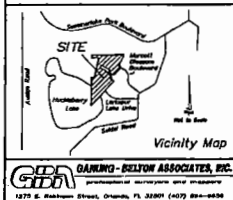
A portion of Sections 33 and 34, Township 23 South, Range 27 East, Orange County, Florida, being more particularly described as follows:

BEGIN at the northwest corner of the Southwest 1/4 of said Section 34; thence run N 89°36'43" E, along the north line thereof, a distance of 502.01 feet to the northwest corner of LAKEVIEW POINTE AT HORIZON WEST PHASE 2A, according to the plat thereof, as recorded in Plat Book 87, Pages 13 and 14, Public Records of Orange County, Florida; thence southerly, along the westerly line of said plot of LAKEVIEW POINTE AT HORIZON WEST PHASE 2A, the following three (3) courses and distances: run S 00°21'15" E, a distance of 50.00 feet; thence run S 24°55'59" W, a distance of 450.11 feet; thence run S 58°59'02" E, a distance of 79.93 feet to a point on the westerly line of LAKEVIEW POINTE AT HORIZON WEST PHASE 1, according to the plat thereof, as recorded in Plat Book 83, Pages 100 through 106, Public Records of Orange County, Florida; thence southerly, along the westerly line of said plot of LAKEVIEW POINTE AT HORIZON WEST PHASE 1, the following courses and distances: run S 31°00'38" W, a distance of 102.00 feet to a point on a non-tangent curve, concave westerly, having a radius of 25.00 feet; thence, on a chord bearing of S 07°55'25" E and a chord distance of 38.89 feet, run southerly, along the arc of said curve, a distance of 44.59 feet, through a central angle of 102°07'14"; thence run southerly, along the arc of said curve, a distance of 17.82 feet to the point of tangency thereof; thence run S 43°06'11" W, a distance of 14.61 feet; thence run N 78°27'15" W, a distance of 54.81 feet; thence run S 42°20'09" W, a distance of 56.68 feet; thence run N 58°56'14" W, a distance of 217.87 feet; thence run N 31°29'36" E, a distance of 102.16 feet; thence run N 58°59'02" E, a distance of 332.89 feet to a point of curvature of a curve, concave southerly, having a radius of 505.00 feet and a central angle of 67°46'21"; thence run northwesterly, along the arc of said curve, a distance of 79.36 feet to a point of tangency thereof; thence run S 46°31'49" E, a distance of 425.63 feet; thence run S 43°06'11" W, a distance of 53.00 feet; thence run S 40°31'49" E, a distance of 12.77 feet, through a central angle of 34°51'00" to the point of tangency thereof; thence run S 46°31'49" E, a distance of 100.00 feet; thence run S 43°06'11" W, a distance of 521.07 feet; thence run S 23°04'01" W, a distance of 53.23 feet; thence run S 43°06'11" W, a distance of 978.63 feet to a point on the west line of the East 1/2 of the Southwest 1/4 of said Section 33; thence run N 00°04'19" E, a distance of 1,222.44 feet to a point on a non-tangent curve, concave southerly, having a radius of 560.21 feet; thence, on a chord bearing of S 83°50'07" E and a chord distance of 124.35 feet, run southerly, along the arc of said curve, through a central angle of 121°81'11", a distance of 124.59 feet to a point; thence run N 12°31'47" E, a distance of 811.24 feet to a point on a non-tangent curve, concave southerly, having a radius of 880.00 feet; thence, on a chord bearing of N 89°12'26" W and a chord distance of 151.63 feet, run westerly, along the arc of said curve, through a central angle of 07°04'20", a distance of 121.53 feet to the point of tangency thereof; thence run S 89°16'12" W, a distance of 188.64 feet to a point on the westerly line of the East 1/2 of the Southwest 1/4 of said Section 33; thence run N 00°04'19" E, along said west line, a distance of 120.00 feet to a point on the north line of the Southwest 1/4 of said Section 33; thence run N 89°49'12" E, along said north line, a distance of 1,323.65 feet to the POINT OF BEGINNING.

Containing 36.85 acres, more or less.

Surveyor's Notes:

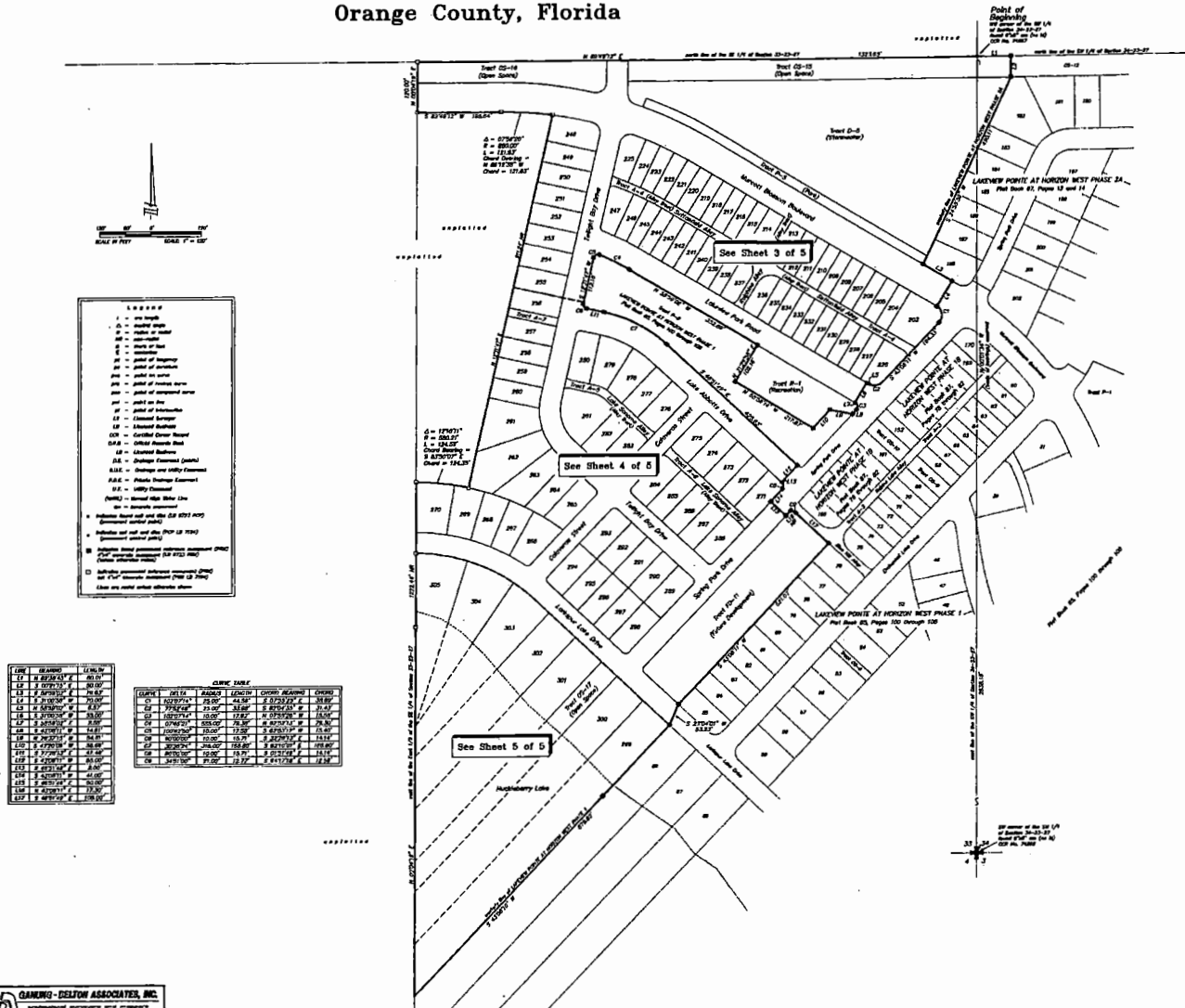
1. Bearings are based on the west line of the Southwest 1/4 of Section 34, Township 23 South, Range 27 East, Orange County, Florida, as having an assumed bearing of N 00°01'34" W.
2. The following tracts constitute Common Area as more particularly defined in the Commonly Delineated Area (LAKEVIEW POINTE) as recorded in Official Records Book 1043, Page 2336, of the Public Records of Orange County, Florida, and any amendments and/or supplements thereto (the "Declaration"). The tracts shall be owned and maintained by the Lakeview Pointe at Horizon West Homeowners Association, Inc., a Florida not-for-profit corporation (the "Association").
 Alley Tracts "A-1", "A-2", "A-3" and "A-4" (Private Access)
 Tracts "TOS-15", "TOS-16" and "TOS-17" (Open Space)
 Tract "T-1" (Park)
 Tract "T-2" (Recreation)
3. The 25.00 foot Private Driveway Easement (P.D.E.) located within Lots 289 through 305, inclusive, and Open Space Tract "TOS-17" is dedicated to the Association and constitutes Common Area as more particularly defined in the Declaration. Use and maintenance of the property subject to the P.D.E. is subject to the terms, conditions and restrictions set forth in the Declaration.
4. Tract "T-5" (Park) is subject to a blanket Driveway Easement which is dedicated to the public.
5. The Natural High Water Line (NHWL) for Huddellary Lake, Elevation = 85.02' (NAVD 83), was located in the field by Survey-Station Associates, Inc. and is based on Orange County datum.
6. Lots 289 through 305, inclusive, and Tract "TOS-17" (Open Space) are subject to a "Conservation Easement" as recorded in Official Records Book 10513, Page 8306, Public Records of Orange County, Florida, and use and maintenance of the property subject to the Conservation Easement is subject to the terms, conditions and restrictions set forth in the Conservation Easement and the Declaration.
7. Tract "TOS-17" (Future Development) shall be owned and maintained by the owner, its successors and/or assigns.
8. All drainage infrastructure located within Alley Tracts shall be owned and maintained by the Association or Common Area.
9. Dashed lines extending into the waters of Huddellary Lake represent riparian rights. Owners may have claim of title to these lands along below the Ordinary High Water Line (OHWL) of Huddellary Lake. Ordinary High Water Line has not been determined.
10. All potential utility easements shall also be necessary for the construction, installation, maintenance, and operation of cable television services provided; however, no such construction, installation, maintenance, and operation of cable television services shall interfere with the facilities and services of any electric, telephone, gas or other public utility in the event a cable television company disrupts the facilities of a public utility, it shall be solely responsible for the disruption. This section shall not apply to those projects easements granted to or retained by a particular electric, telephone, gas or other public utility. Such construction, installation, maintenance, and operation shall comply with the National Electrical Safety Code as adopted by the Florida Public Service Commission, (State Statute 177.001 (20)).



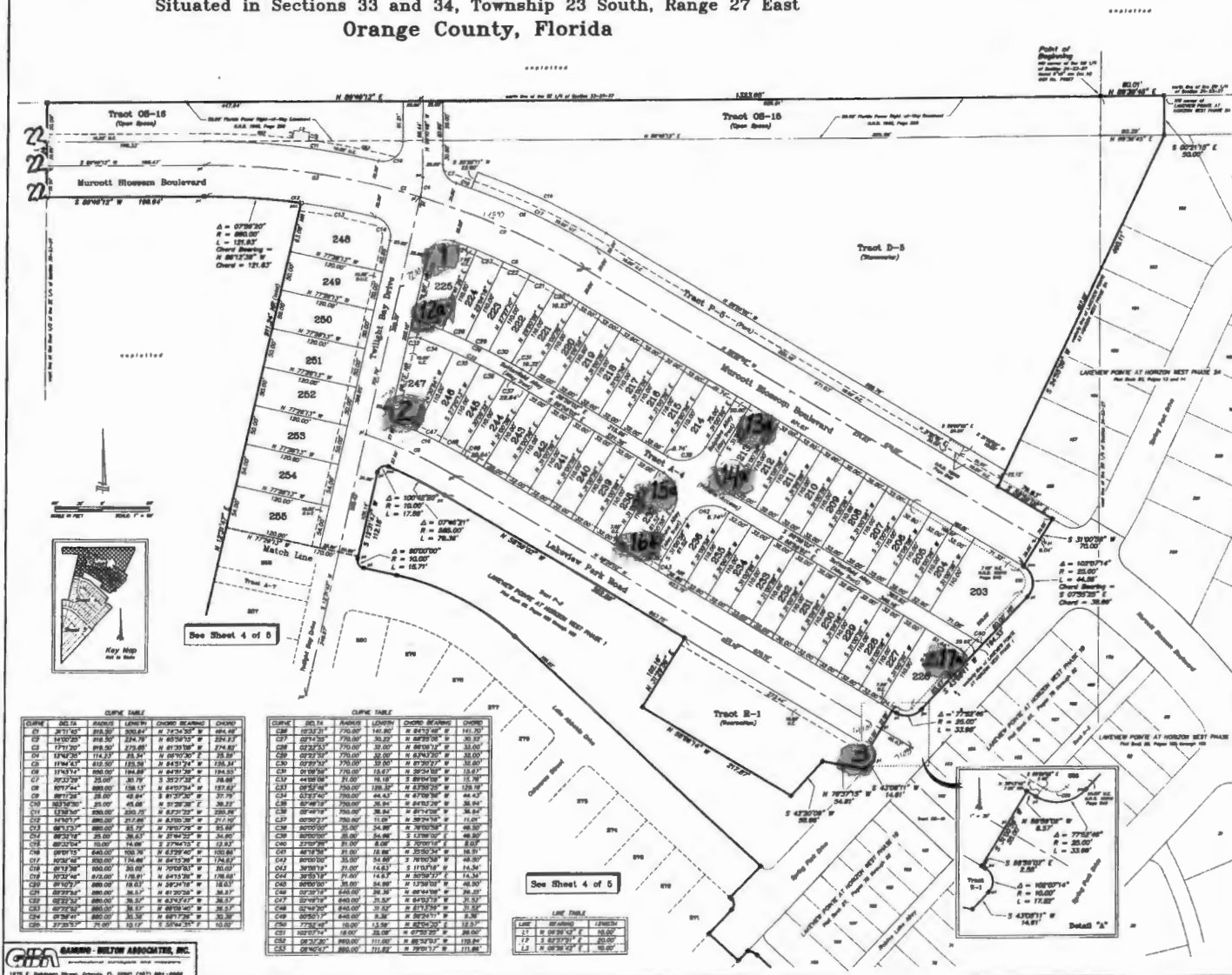
THE PROPERTY SHOWN HEREON REPRESENTS A PORTION OF THE LANDS INCLUDED IN THE HORIZON WEST PHASE 2, PARCELS A-1, A-2, A-3, A-4, B-1, B-2, B-3, B-4, B-5, B-6, B-7, B-8, B-9, B-10, B-11, B-12, B-13, B-14, B-15, B-16, B-17, B-18, B-19, B-20, B-21, B-22, B-23, B-24, B-25, B-26, B-27, B-28, B-29, B-30, B-31, B-32, B-33, B-34, B-35, B-36, B-37, B-38, B-39, B-40, B-41, B-42, B-43, B-44, B-45, B-46, B-47, B-48, B-49, B-50, B-51, B-52, B-53, B-54, B-55, B-56, B-57, B-58, B-59, B-60, B-61, B-62, B-63, B-64, B-65, B-66, B-67, B-68, B-69, B-70, B-71, B-72, B-73, B-74, B-75, B-76, B-77, B-78, B-79, B-80, B-81, B-82, B-83, B-84, B-85, B-86, B-87, B-88, B-89, B-90, B-91, B-92, B-93, B-94, B-95, B-96, B-97, B-98, B-99, B-100, B-101, B-102, B-103, B-104, B-105, B-106, B-107, B-108, B-109, B-110, B-111, B-112, B-113, B-114, B-115, B-116, B-117, B-118, B-119, B-120, B-121, B-122, B-123, B-124, B-125, B-126, B-127, B-128, B-129, B-130, B-131, B-132, B-133, B-134, B-135, B-136, B-137, B-138, B-139, B-140, B-141, B-142, B-143, B-144, B-145, B-146, B-147, B-148, B-149, B-150, B-151, B-152, B-153, B-154, B-155, B-156, B-157, B-158, B-159, B-160, B-161, B-162, B-163, B-164, B-165, B-166, B-167, B-168, B-169, B-170, B-171, B-172, B-173, B-174, B-175, B-176, B-177, B-178, B-179, B-180, B-181, B-182, B-183, B-184, B-185, B-186, B-187, B-188, B-189, B-190, B-191, B-192, B-193, B-194, B-195, B-196, B-197, B-198, B-199, B-200, B-201, B-202, B-203, B-204, B-205, B-206, B-207, B-208, B-209, B-210, B-211, B-212, B-213, B-214, B-215, B-216, B-217, B-218, B-219, B-220, B-221, B-222, B-223, B-224, B-225, B-226, B-227, B-228, B-229, B-230, B-231, B-232, B-233, B-234, B-235, B-236, B-237, B-238, B-239, B-240, B-241, B-242, B-243, B-244, B-245, B-246, B-247, B-248, B-249, B-250, B-251, B-252, B-253, B-254, B-255, B-256, B-257, B-258, B-259, B-260, B-261, B-262, B-263, B-264, B-265, B-266, B-267, B-268, B-269, B-270, B-271, B-272, B-273, B-274, B-275, B-276, B-277, B-278, B-279, B-280, B-281, B-282, B-283, B-284, B-285, B-286, B-287, B-288, B-289, B-290, B-291, B-292, B-293, B-294, B-295, B-296, B-297, B-298, B-299, B-300, B-301, B-302, B-303, B-304, B-305, B-306, B-307, B-308, B-309, B-310, B-311, B-312, B-313, B-314, B-315, B-316, B-317, B-318, B-319, B-320, B-321, B-322, B-323, B-324, B-325, B-326, B-327, B-328, B-329, B-330, B-331, B-332, B-333, B-334, B-335, B-336, B-337, B-338, B-339, B-340, B-341, B-342, B-343, B-344, B-345, B-346, B-347, B-348, B-349, B-350, B-351, B-352, B-353, B-354, B-355, B-356, B-357, B-358, B-359, B-360, B-361, B-362, B-363, B-364, B-365, B-366, B-367, B-368, B-369, B-370, B-371, B-372, B-373, B-374, B-375, B-376, B-377, B-378, B-379, B-380, B-381, B-382, B-383, B-384, B-385, B-386, B-387, B-388, B-389, B-390, B-391, B-392, B-393, B-394, B-395, B-396, B-397, B-398, B-399, B-400, B-401, B-402, B-403, B-404, B-405, B-406, B-407, B-408, B-409, B-410, B-411, B-412, B-413, B-414, B-415, B-416, B-417, B-418, B-419, B-420, B-421, B-422, B-423, B-424, B-425, B-426, B-427, B-428, B-429, B-430, B-431, B-432, B-433, B-434, B-435, B-436, B-437, B-438, B-439, B-440, B-441, B-442, B-443, B-444, B-445, B-446, B-447, B-448, B-449, B-450, B-451, B-452, B-453, B-454, B-455, B-456, B-457, B-458, B-459, B-460, B-461, B-462, B-463, B-464, B-465, B-466, B-467, B-468, B-469, B-470, B-471, B-472, B-473, B-474, B-475, B-476, B-477, B-478, B-479, B-480, B-481, B-482, B-483, B-484, B-485, B-486, B-487, B-488, B-489, B-490, B-491, B-492, B-493, B-494, B-495, B-496, B-497, B-498, B-499, B-500, B-501, B-502, B-503, B-504, B-505, B-506, B-507, B-508, B-509, B-510, B-511, B-512, B-513, B-514, B-515, B-516, B-517, B-518, B-519, B-520, B-521, B-522, B-523, B-524, B-525, B-526, B-527, B-528, B-529, B-530, B-531, B-532, B-533, B-534, B-535, B-536, B-537, B-538, B-539, B-540, B-541, B-542, B-543, B-544, B-545, B-546, B-547, B-548, B-549, B-550, B-551, B-552, B-553, B-554, B-555, B-556, B-557, B-558, B-559, B-560, B-561, B-562, B-563, B-564, B-565, B-566, B-567, B-568, B-569, B-570, B-571, B-572, B-573, B-574, B-575, B-576, B-577, B-578, B-579, B-580, B-581, B-582, B-583, B-584, B-585, B-586, B-587, B-588, B-589, B-590, B-591, B-592, B-593, B-594, B-595, B-596, B-597, B-598, B-599, B-600, B-601, B-602, B-603, B-604, B-605, B-606, B-607, B-608, B-609, B-610, B-611, B-612, B-613, B-614, B-615, B-616, B-617, B-618, B-619, B-620, B-621, B-622, B-623, B-624, B-625, B-626, B-627, B-628, B-629, B-630, B-631, B-632, B-633, B-634, B-635, B-636, B-637, B-638, B-639, B-640, B-641, B-642, B-643, B-644, B-645, B-646, B-647, B-648, B-649, B-650, B-651, B-652, B-653, B-654, B-655, B-656, B-657, B-658, B-659, B-660, B-661, B-662, B-663, B-664, B-665, B-666, B-667, B-668, B-669, B-670, B-671, B-672, B-673, B-674, B-675, B-676, B-677, B-678, B-679, B-680, B-681, B-682, B-683, B-684, B-685, B-686, B-687, B-688, B-689, B-690, B-691, B-692, B-693, B-694, B-695, B-696, B-697, B-698, B-699, B-700, B-701, B-702, B-703, B-704, B-705, B-706, B-707, B-708, B-709, B-710, B-711, B-712, B-713, B-714, B-715, B-716, B-717, B-718, B-719, B-720, B-721, B-722, B-723, B-724, B-725, B-726, B-727, B-728, B-729, B-730, B-731, B-732, B-733, B-734, B-735, B-736, B-737, B-738, B-739, B-740, B-741, B-742, B-743, B-744, B-745, B-746, B-747, B-748, B-749, B-750, B-751, B-752, B-753, B-754, B-755, B-756, B-757, B-758, B-759, B-760, B-761, B-762, B-763, B-764, B-765, B-766, B-767, B-768, B-769, B-770, B-771, B-772, B-773, B-774, B-775, B-776, B-777, B-778, B-779, B-780, B-781, B-782, B-783, B-784, B-785, B-786, B-787, B-788, B-789, B-790, B-791, B-792, B-793, B-794, B-795, B-796, B-797, B-798, B-799, B-800, B-801, B-802, B-803, B-804, B-805, B-806, B-807, B-808, B-809, B-810, B-811, B-812, B-813, B-814, B-815, B-816, B-817, B-818, B-819, B-820, B-821, B-822, B-823, B-824, B-825, B-826, B-827, B-828, B-829, B-830, B-831, B-832, B-833, B-834, B-835, B-836, B-837, B-838, B-839, B-840, B-841, B-842, B-843, B-844, B-845, B-846, B-847, B-848, B-849, B-850, B-851, B-852, B-853, B-854, B-855, B-856, B-857, B-858, B-859, B-860, B-861, B-862, B-863, B-864, B-865, B-866, B-867, B-868, B-869, B-870, B-871, B-872, B-873, B-874, B-875, B-876, B-877, B-878, B-879, B-880, B-881, B-882, B-883, B-884, B-885, B-886, B-887, B-888, B-889, B-890, B-891, B-892, B-893, B-894, B-895, B-896, B-897, B-898, B-899, B-900, B-901, B-902, B-903, B-904, B-905, B-906, B-907, B-908, B-909, B-910, B-911, B-912, B-913, B-914, B-915, B-916, B-917, B-918, B-919, B-920, B-921, B-922, B-923, B-924, B-925, B-926, B-927, B-928, B-929, B-930, B-931, B-932, B-933, B-934, B-935, B-936, B-937, B-938, B-939, B-940, B-941, B-942, B-943, B-944, B-945, B-946, B-947, B-948, B-949, B-950, B-951, B-952, B-953, B-954, B-955, B-956, B-957, B-958, B-959, B-960, B-961, B-962, B-963, B-964, B-965, B-966, B-967, B-968, B-969, B-970, B-971, B-972, B-973, B-974, B-975, B-976, B-977, B-978, B-979, B-980, B-981, B-982, B-983, B-984, B-985, B-986, B-987, B-988, B-989, B-990, B-991, B-992, B-993, B-994, B-995, B-996, B-997, B-998, B-999, B-1000, B-1001, B-1002, B-1003, B-1004, B-1005, B-1006, B-1007, B-1008, B-1009, B-1010, B-1011, B-1012, B-1013, B-1014, B-1015, B-1016, B-1017, B-1018, B-1019, B-1020, B-1021, B-1022, B-1023, B-1024, B-1025, B-1026, B-1027, B-1028, B-1029, B-1030, B-1031, B-1032, B-1033, B-1034, B-1035, B-1036, B-1037, B-1038, B-1039, B-1040, B-1041, B-1042, B-1043, B-1044, B-1045, B-1046, B-1047, B-1048, B-1049, B-1050, B-1051, B-1052, B-1053, B-1054, B-1055, B-1056, B-1057, B-1058, B-1059, B-1060, B-1061, B-1062, B-1063, B-1064, B-1065, B-1066, B-1067, B-1068, B-1069, B-1070, B-1071, B-1072, B-1073, B-1074, B-1075, B-1076, B-1077, B-1078, B-1079, B-1080, B-1081, B-1082, B-1083, B-1084, B-1085, B-1086, B-1087, B-1088, B-1089, B-1090, B-1091, B-1092, B-1093, B-1094, B-1095, B-1096, B-1097, B-1098, B-1099, B-1100, B-1101, B-1102, B-1103, B-1104, B-1105, B-1106, B-1107, B-1108, B-1109, B-1110, B-1111, B-1112, B-1113, B-1114, B-1115, B-1116, B-1117, B-1118, B-1119, B-1120, B-1121, B-1122, B-1123, B-1124, B-1125, B-1126, B-1127, B-1128, B-1129, B-1130, B-1131, B-1132, B-1133, B-1134, B-1135, B-1136, B-1137, B-1138, B-1139, B-1140, B-1141, B-1142, B-1143, B-1144, B-1145, B-1146, B-1147, B-1148, B-1149, B-1150, B-1151, B-1152, B-1153, B-1154, B-1155, B-1156, B-1157, B-1158, B-1159, B-1160, B-1161, B-1162, B-1163, B-1164, B-1165, B-1166, B-1167, B-1168, B-1169, B-1170, B-1171, B-1172, B-1173, B-1174, B-1175, B-1176, B-1177, B-1178, B-1179, B-1180, B-1181, B-1182, B-1183, B-1184, B-1185, B-1186, B-1187, B-1188, B-1189, B-1190, B-1191, B-1192, B-1193, B-1194, B-1195, B-1196, B-1197, B-1198, B-1199, B-1200, B-1201, B-1202, B-1203, B-1204, B-1205, B-1206, B-1207, B-1208, B-1209, B-1210, B-1211, B-1212, B-1213, B-1214, B-1215, B-1216, B-1217, B-1218, B-1219, B-1220, B-1221, B-1222, B-1223, B-1224, B-1225, B-1226, B-1227, B-1228, B-1229, B-1230, B-1231, B-1232, B-1233, B-1234, B-1235, B-1236, B-1237, B-1238, B-1239, B-1240, B-1241, B-1242, B-1243, B-1244, B-1245, B-1246, B-1247, B-1248, B-1249, B-1250, B-1251, B-1252, B-1253, B-1254, B-1255, B-1256, B-1257, B-1258, B-1259, B-1260, B-1261, B-1262, B-1263, B-1264, B-1265, B-1266, B-1267, B-1268, B-1269, B-1270, B-1271, B-1272, B-1273, B-1274, B-1275, B-1276, B-1277, B-1278, B-1279, B-1280, B-1281, B-1282, B-1283, B-1284, B-1285, B-1286, B-1287, B-1288, B-1289, B-1290, B-1291, B-1292, B-1293, B-1294, B-1295, B-1296, B-1297, B-1298, B-1299, B-1300, B-1301, B-1302, B-1303, B-1304, B-1305, B-1306, B-1307, B-1308, B-1309, B-1310, B-1311, B-1312, B-1313, B-1314, B-1315, B-1316, B-1317, B-1318, B-1319, B-1320, B-1321, B-1322, B-1323, B-1324, B-1325, B-1326, B-1327, B-1328, B-1329, B-1330, B-1331, B-1332, B-1333, B-1334, B-1335, B-1336, B-1337, B-1338, B-1339, B-1340, B-1341, B-1342, B-1343, B-1344, B-1345, B-1346, B-1347, B-1348, B-1349, B-1350, B-1351, B-1352, B-1353, B-1354, B-1355, B-1356, B-1357, B-1358, B-1359, B-1360, B-1361, B-1362, B-1363, B-1364, B-1365, B-1366, B-1367, B-1368, B-1369, B-1370, B-1371, B-1372, B-1373, B-1374, B-1375, B-1376, B-1377, B-1378, B-1379, B-1380, B-1381, B-1382, B-1383, B-1384, B-1385, B-1386, B-1387, B-1388, B-1389, B-1390, B-1391, B-1392, B-1393, B-1394, B-1395, B-1396, B-1397, B-1398, B-1399, B-1400, B-1401, B-1402, B-1403, B-1404, B-1405, B-1406, B-1407, B-1408, B-1409, B-1410, B-1411, B-1412, B-1413, B-1414, B-1415, B-1416, B-1417, B-1418, B-1419, B-1420, B-1421, B-1422, B-1423, B-1424, B-1425, B-1426, B-1427, B-1428, B-1429, B-1430, B-1431, B-1432, B-1433, B-1434, B-1435, B-1436, B-1437, B-1438, B-1439, B-1440, B-1441, B-1442, B-1443, B-1444, B-1445, B-1446, B-1447, B-1448, B-1449, B-1450, B-1451, B-1452, B-1453, B-1454, B-1455, B-1456, B-1457, B-1458, B-1459, B-1460, B-1461, B-1462, B-1463, B-1464, B-1465, B-1466, B-1467, B-1468, B-1469, B-1470, B-1471, B-1472, B-1473, B-1474, B-1475, B-1476, B-1477, B-1478, B-1479, B-1480, B-1481, B-1482, B-1483, B-1484, B-1485, B-1486, B-1487, B-1488, B-1489, B-1490, B-1491, B-1492, B-1493, B-1494, B-1495, B-1496, B-1497, B-1498, B-1499, B-1500, B-1501, B-1502, B-1503, B-1504, B-1505, B-1506, B-1507, B-1508, B-1509, B-1510, B-1511, B-1512, B-1513, B-1514, B-1515, B-1516, B-1517, B-1518, B-1519, B-1520, B-1521, B-1522, B-1523, B-1524, B-1525, B-1526

LAKEVIEW POINTE AT HORIZON WEST PHASE 2B

Situated in Sections 33 and 34, Township 23 South, Range 27 East
Orange County, Florida

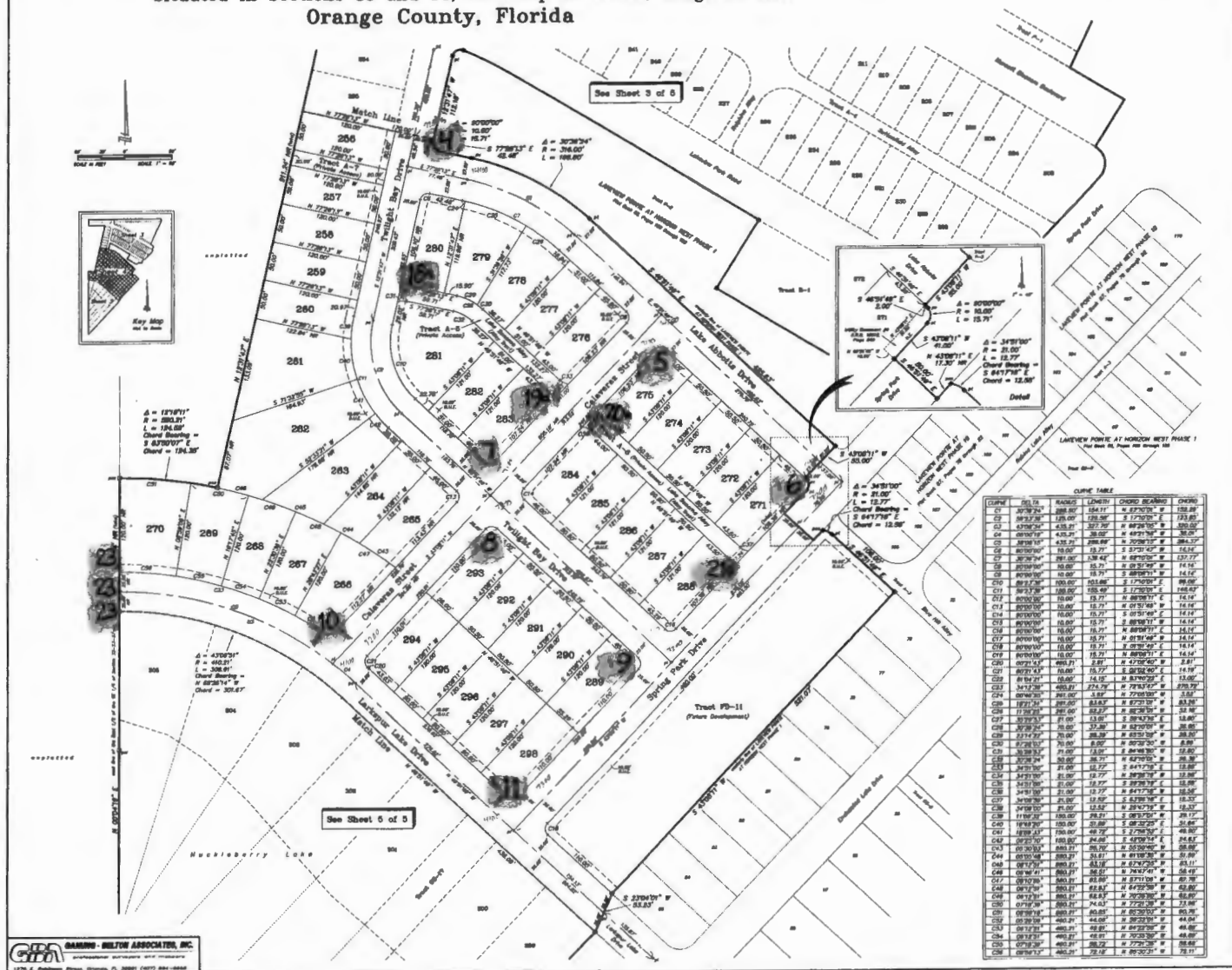


Situated in Sections 33 and 34, Township 23 South, Range 27 East
Orange County, Florida



LAKEVIEW POINTE AT HORIZON WEST PHASE 2B

Situated in Sections 33 and 34, Township 23 South, Range 27 East
Orange County, Florida



LAKEVIEW POINTE AT HORIZON WEST PHASE 2B

Situated in Sections 33 and 34, Township 23 South, Range 27 East
Orange County, Florida

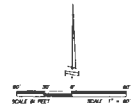
Sheet 5 of 5

PLAT
BOOK

89

PAGE

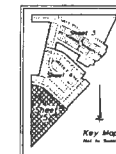
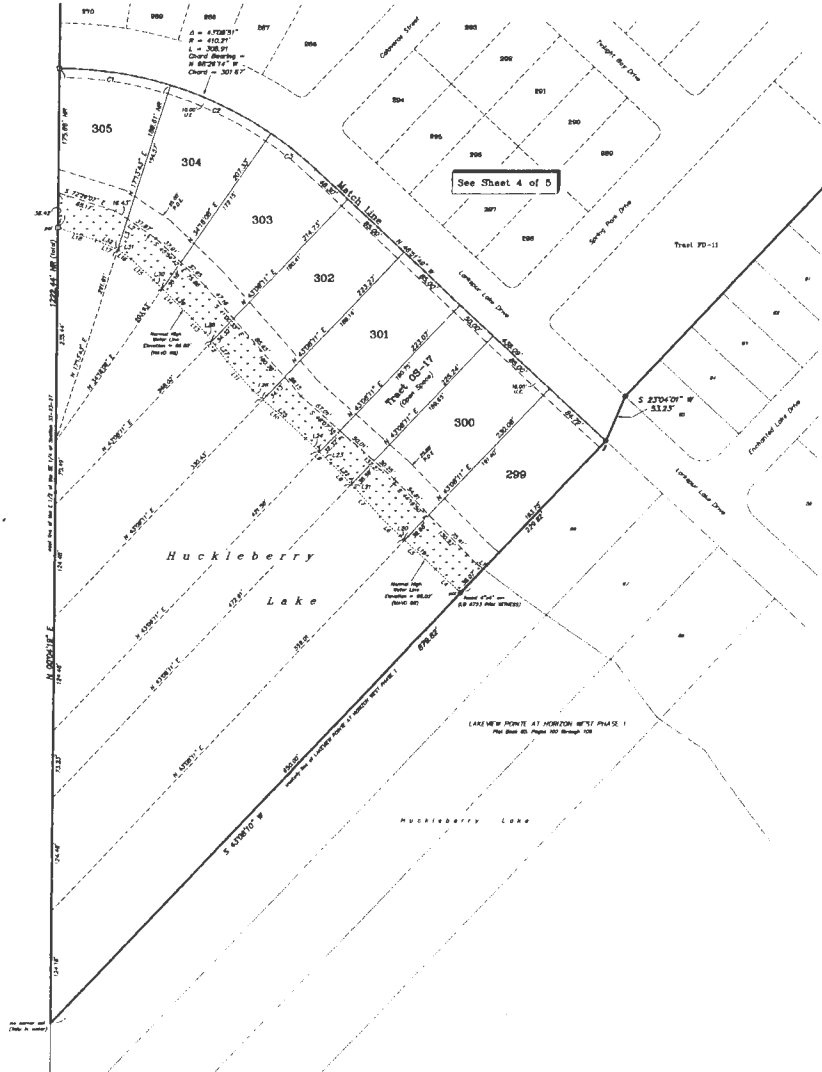
49



Computation Element
G.S.B. 1981.2 Page 8/10

CURVE	DELTA	RADIUS	LENGTH	CHORD BEARING	CHORD
C1	173°14'34"	410.21'	123.12'	N 81°24'46" W	122.66'
C2	173°01'04"	410.21'	123.03'	N 84°55'25" W	122.00'
C3	08°50'03"	410.21'	63.25'	N 81°16'50" W	63.19'

LINE	BEARING	LENGTH
L1	S 35°34'30" E	1.50'
L2	S 34°51'53" E	34.30'
L3	S 17°11'07" W	25.04'
L4	N 46°51'13" W	36.19'
L5	N 47°07'44" W	33.85'
L6	N 46°12'35" W	30.12'
L7	N 41°08'22" W	42.78'
L8	N 43°00'19" W	31.91'
L9	N 45°21'22" W	39.04'
L10	N 47°32'54" W	38.15'
L11	N 41°08'29" W	42.40'
L12	N 37°22'43" W	36.84'
L13	N 43°09'14" W	21.98'
L14	N 44°52'38" W	60.43'
L15	N 41°01'20" W	13.68'
L16	N 53°02'44" W	18.63'
L17	N 48°17'29" W	27.18'
L18	N 72°10'14" W	13.68'
L19	N 47°07'44" W	48.80'
L20	N 47°07'44" W	1.25'
L21	N 43°00'19" W	3.08'
L22	N 43°00'19" W	32.23'
L23	N 45°21'22" W	17.83'
L24	N 45°21'22" W	21.21'
L25	N 47°32'54" W	61.86'
L26	N 47°32'54" W	10.25'
L27	N 37°22'43" W	27.63'
L28	N 37°22'43" W	11.81'
L29	N 41°08'29" W	46.92'
L30	N 44°52'38" W	15.81'
L31	N 44°52'38" W	1.08'
L32	N 40°17'29" W	26.08'



NO PARKING

Sheet 3 of 5

PLAT
BOOK

89

PAGE

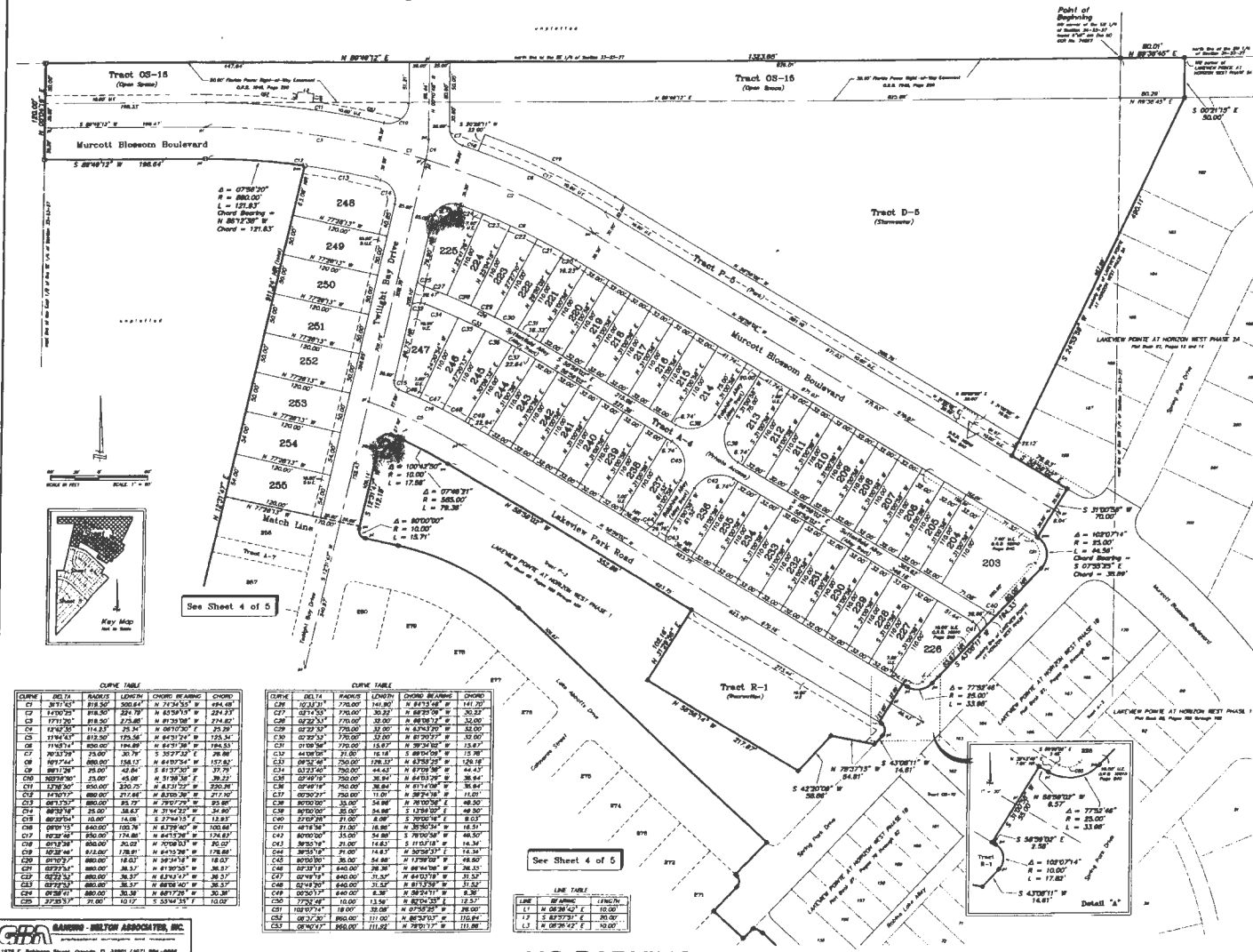
47

LAKEVIEW POINTE AT HORIZON WEST PHASE 2B

Situated in Sections 33 and 34, Township 23 South, Range 27 East
Orange County, Florida

NO PARKING

NO PARKING



NO PARKING

