



Interoffice Memorandum

09-01-17A08:08 RCVD

DATE: August 30, 2017 09-01-17A08:41 RCVD

TO: Katie A. Smith, Deputy Clerk of the
Board of County Commissioners,
County Comptroller's Office

THROUGH: Cheryl Gillespie, Supervisor,
Agenda Development Office

FROM: Alberto A. Vargas, MArch., Manager,
Planning Division

CONTACT PERSON: John Smogor, Planning Administrator
Planning Division 407-836-5616 and
john.smogor@ocfl.net

SUBJECT: Request for Board of County Commissioners
(BCC) Public Hearing

Project Name: Village F Master Planned Development / Land Use
Plan (PD / LUP) – Case # CDR-17-03-070

Type of Hearing: Substantial Change

Applicant: Eric Warren, Poulos & Bennett, LLC

Commission District: 1

General Location: Generally southeast of Seidel Road and west of
State Road 429 (Western Beltway)

**BCC Public Hearing
Required by:** Orange County Code, Chapter 30, Article III,
Section 30-89 and Orange County Code, Chapter
38, Article VIII, Division 1, Section 38-1207

LEGISLATIVE FILE #

17-1185

October 3, 2017
@ 2pm

**Clerk's Advertising
Requirements:**

(1) At least 15 days before the BCC public hearing date, publish an advertisement in the Legal Notices section of *The Orlando Sentinel* describing the particular request, the general location of the subject property, and the date, time, and place when the BCC public hearing will be held;

and

(2) At least 10 days before the BCC public hearing date, send notices of BCC public hearing by U.S. mail to owners of property within 300 feet of the subject property and beyond.

Spanish Contact Person:

IF YOU HAVE ANY QUESTIONS REGARDING THIS NOTICE, CONTACT THE ORANGE COUNTY PLANNING DIVISION: Front Desk, 407-836-8181

PARA MÁS INFORMACIÓN, REFERENTE A ESTA VISTA PUBLICA CON RESPECTO A UNA AUDENCIA PUBLICA SOBRE PROPIEDAD EN SU AREA/VECINDAD, FAVOR COMUNICARSE CON LA DIVISIÓN DE PLANIFICACION, AL NUMERO, 407-836-8181

Advertising Language:

A PD substantial change to increase the residential unit count in PD Parcel S-19 (Village Home District) from 118 to 140 and PD Parcel S-20 (Garden Home District) from 59 to 72, or an overall PD residential increase of 35 units.

Material Provided:

- (1) Names and last known addresses of property owners within 300 feet and beyond (*via email from Fiscal and Operational Support Division*); and
- (2) Location map (*to be mailed to property owners*).

Special instructions to the Clerk:

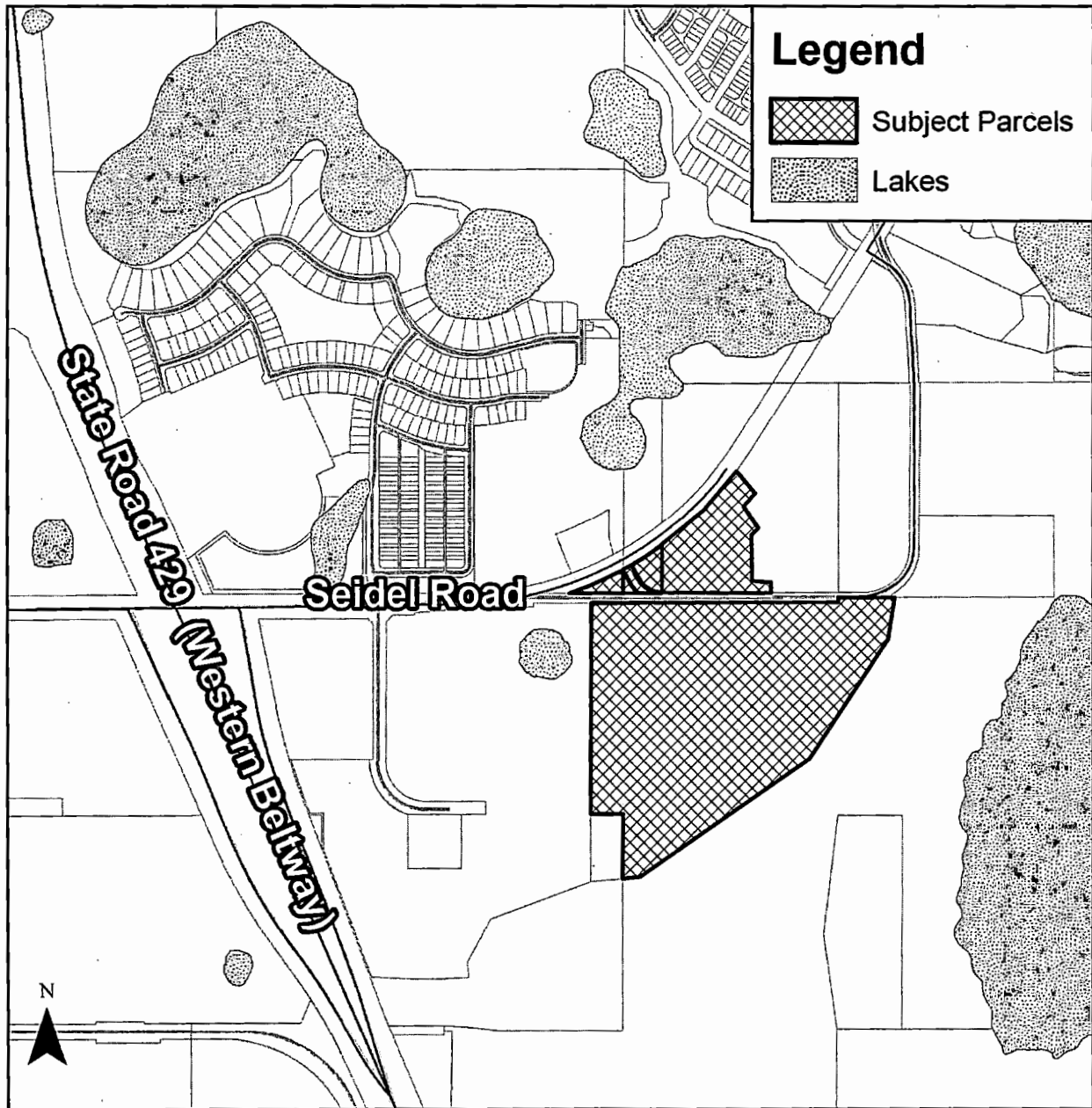
Please place this request on the **October 3, 2017** BCC agenda. Unless stated otherwise, the public hearing should be advertised to begin at 2:00 p.m., or as soon thereafter as the matter may be heard.

Attachment (location map)

c: Chris R. Testerman, AICP, Assistant County Administrator
Jon V. Weiss, Director, Community Environmental Development Services
Department

Location Map

CDR-17-03-070



If you have any questions
regarding this map, please call
John Smogor at 407-836-5616.

Legal Description

CDR-17-03-070

COMM NE COR OF SEC 08-24-27 TH S ALONG E LINE OF SAID SEC 08 30 FT FOR POB TH RUN N89-46-07E 1325.89 FT TO A PT ON E LINE OF NW 1/4 OF THE NW 1/4 IN SEC 09-24-27 TH RUN N 30 FT ALONG E LINE OF SAID NW 1/4 OF NW 1/4 OF SEC 09-24-27 TH RUN N89-46-07E 345.76 FT M/L TH S08-37-23W 258.89 FT TH S33-11-17W 877.94 FT TH S55-03-52W 1274.60 FT TH S84-17-43W 197.88 FT ALSO A PT ON TH E LINE OF SAID SEC 08-24-27 TH RUN N ALONG SAID E LINE OF SAID SEC 08-24-27 397.14 FT M/L TO SE COR OF NE 1/4 OF NE 1/4 OF SAID SEC 08-24-27 TH W ALONG S LINE OF NE 1/4 OF NE 1/4 OF SAID SEC 08-24-27 197.12 M/L TH N TO A PT S89-39-24W 197.81 FT W OF THE POB TH E TO POB

COMM AT THE SE CORNER OF THE SE 1/4 SEC 05-24-27 TH N00-05-36E 30 FT TO THE POB THE CONT N00-05-36E 129.83 FT TO A POC CONCAVE SLY HAVING A RADIUS 25 FT DELTA 61-39-10 CHORD BRG N86-51-58W AN ARC LENGTH 26.9 FT TO A PRC OF A CURVE CONCAVE NWLY HAVING A RADIUS 2133 FT DELTA 09-01-10 CHORD BRG S66-47-35W AN ARC LENGTH 336.4 FT TH N89-49-29E 333.66 FT TO THE POB SEE 10960/7801

COMM AT THE SW CORNER SEC 04-24-27 TH N00-05-35E 30 FT FOR THE POB TH CONT N00-05-35E 129.83 FT TO A POC OF A NON-TAN CURVE CONCAVESWLY HAVING A RADIUS 25 FT DELTA 26-53-12 CHORD BRG S42-35-47E AN ARC LENGTH 11.73 FT TH S29-09-10W 72.42 FT TO A POC CONCAVE NELY HAVING A RADIUS 230 FT DELTA 18-29-35 CHORD BRG S38-23-58E 74.24 FT TH S89-56-12W 89.26 FT TO THE POB

COMM AT THE WEST 1/4 CORNER SEC 04-24-27 TH S00-05-36W 2467.53 FT TO THE POB BING A PT ON A NON-TAN CURVE CONCAVE NWLY HAVING A RADIUS 2133 FT DELTA 02-08-28 CHORD BRG N60-27-26E AN ARC LENGTH 79.71 FT TO THE CUSP OF A CURVE CONCAVE SELY HAVING A RADIUS 25 FT DELTA 88-32-22 CHORD BRG S15-07-01W AN ARC LENGTH 38.63 FT TH S29-09-10E 72.42 FT TO A POC OF A TAN CURVE CONCAVE NELY HAVING A RADIUS 170 FT DELTA 58-33-08 CHORD BRG S58-25-45E AN ARC LENGTH 173.73 FT TH S89-57-33W 148.15 FT TO A POC OF A NON-TAN CURVE CONCAVE NELY HAVING A RADIUS 230 FT DELTA 18-29-35 CHOED BRG N38-23-58W AN ARC LENGTH 74.24 FT TH N29-09-10W 72.42 FT TO A POC OF A TAN CURVE CONCAVE SWLY HAVING A RADIUS 25 FT DELTA 26-53-12 CHORD BRG N42-35-47W AN ARC LENGTH 11.73 FT TH N00-05-36E 15.06 FT TO THE POB

COMM AT THE SW CORNER SEC 04-24-27 TH N00-05-35E 30 FT TH N89-56-23E 234.68 FT TO THE POB TH N00-05-35E 292.59 FT TH TO A POC OF A NON_TAN CURVE CONCAVE SEL HAVING A RADIUS 2133 FT DELTA 05-19-14 CHORD BRG S56-43-38W AN ARC LENGTH 198.11 FT TO A PCC CONAVE SELY HAVING A RADIUS 25 FT DELTA 88-32-22 CHORD BRG S15-07-01W AN ARC LENGTH 38.63 FT TH S29-09-10E 72.42 FT TO A POC CONCAVE NELY HAVING A RADIUS 170 FT DELTA 58-33-08 CHORD BRG S58-25-45E AN ARC LENGTH 173.73 FT AND THE POB

Portion of: COMM AT SW COR OF SEC RUN N 30 FT TO N R/W LINE OF SIEDEL RD E 234.70 FT TO POB TH N 1291.52 FT TO N LINE OF SW 1/4 OF SW 1/4 RUN E 1090.56 FT S 1293.20 FT TO N R/W LINE OF SAID R/W W ALONG R/W 1091.13 FT TO POB & (LESS PT NW OF AND PT DESC IN 10933/1230)