



FLORIDA PUBLIC
ARCHAEOLOGY
NETWORK

East Central Region

MISSION

“To promote and facilitate the stewardship, public appreciation, and value of Florida's archaeological heritage through regional centers, partnerships, and community engagement.”



FLORIDA PUBLIC
ARCHAEOLOGY NETWORK

A PROGRAM OF THE UNIVERSITY OF WEST FLORIDA

FPAN.US

KGIDUSKO@FLAGLER.EDU

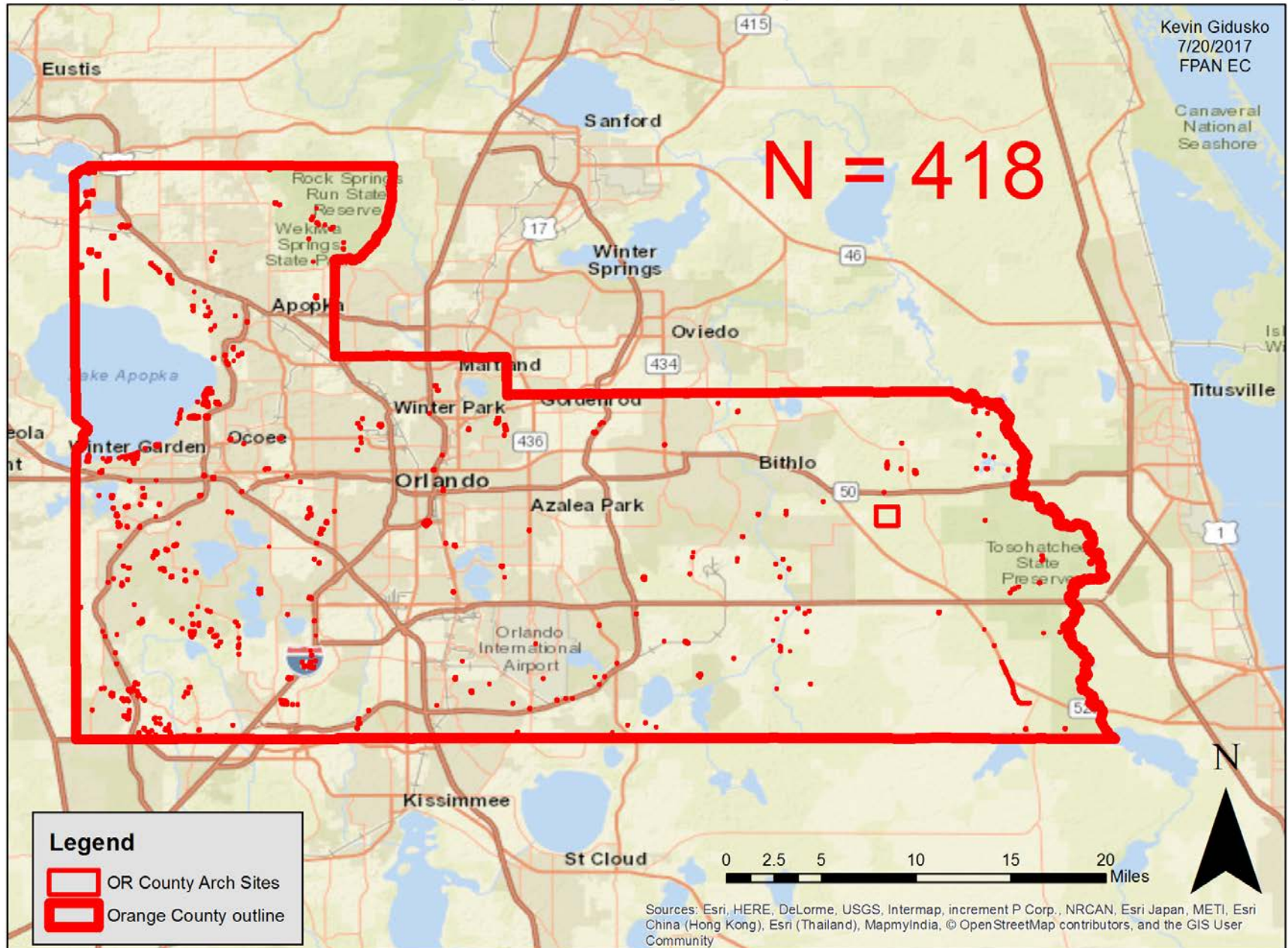
KEVIN GIDUSKO

- Public Archaeologist for FPAN East Central Region
(Orange, Seminole, Brevard, Osceola, Indian River, Okeechobee, St Lucie, Martin)
- 5.5 years with FPAN
- 9 years archaeological research in Florida (Prehistoric/Historic)
- Past-President of the Central Florida Anthropological Society
- Current Co-chair of the Public Education and Interpretation Committee for the Society for Historical Archaeology

1781 and 1891 Bridges

- Archaeological resources are finite, imperiled resources. Preservation is key to understanding past lifeways.
- Bridges and other area-wide infrastructure can inform archaeologists about trade networks and communication capabilities of past inhabitants.
- Context and provenience are key. In situ (In place) resources provide the best option for the preservation of information.
- Educational interpretation of sites engenders appreciation and sense of stewardship of our shared resources.
- Ephemeral archaeological signature of cultural resources for the time periods these archaeological sites represent.
1700'S – no extant pop. data 1890 - 391,422 pop. in Florida

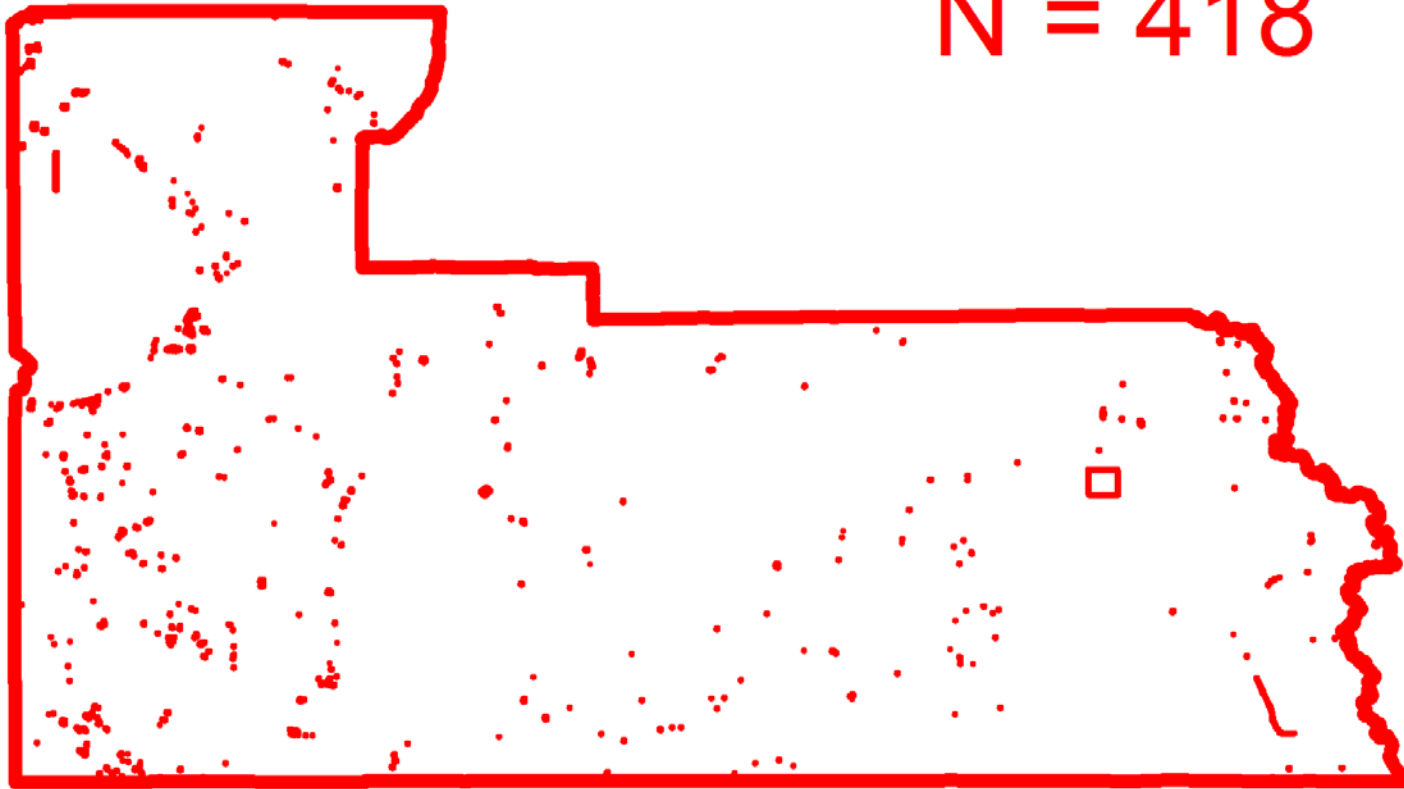
Archaeology Sites of Orange County via FMSF





Archaeology Sites of Orange County via FMSF

Kevin Gidusko
7/20/2017
FPAN EC

N = 418



Legend

-  OR County Arch Sites
-  Orange County outline

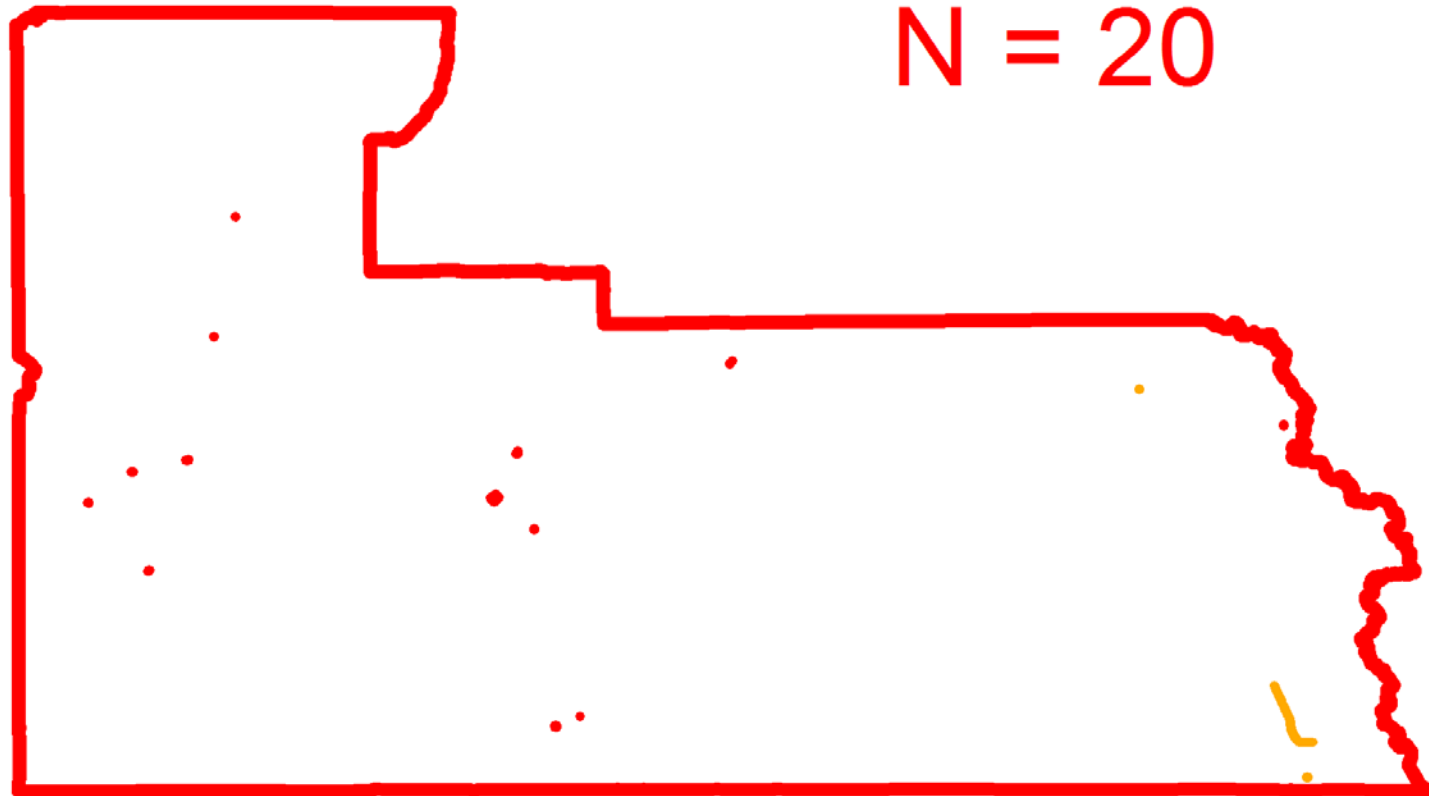
0 2.5 5 10 15 20 Miles



Territorial/ 19th Century Archaeology Sites of Orange County via FMSF

Kevin Gidusko
7/20/2017
FPAN EC

N = 20



Legend

- OR County Arch Sites Territorial
- OR County Arch Sites 19th Century
- Orange County outline

0 2.5 5 10 15 20 Miles

