



Board of County Commissioners

Public Hearings

October 31, 2017



RZ-17-07-017 - 3200 Lake Twylo Road Conventional Rezoning

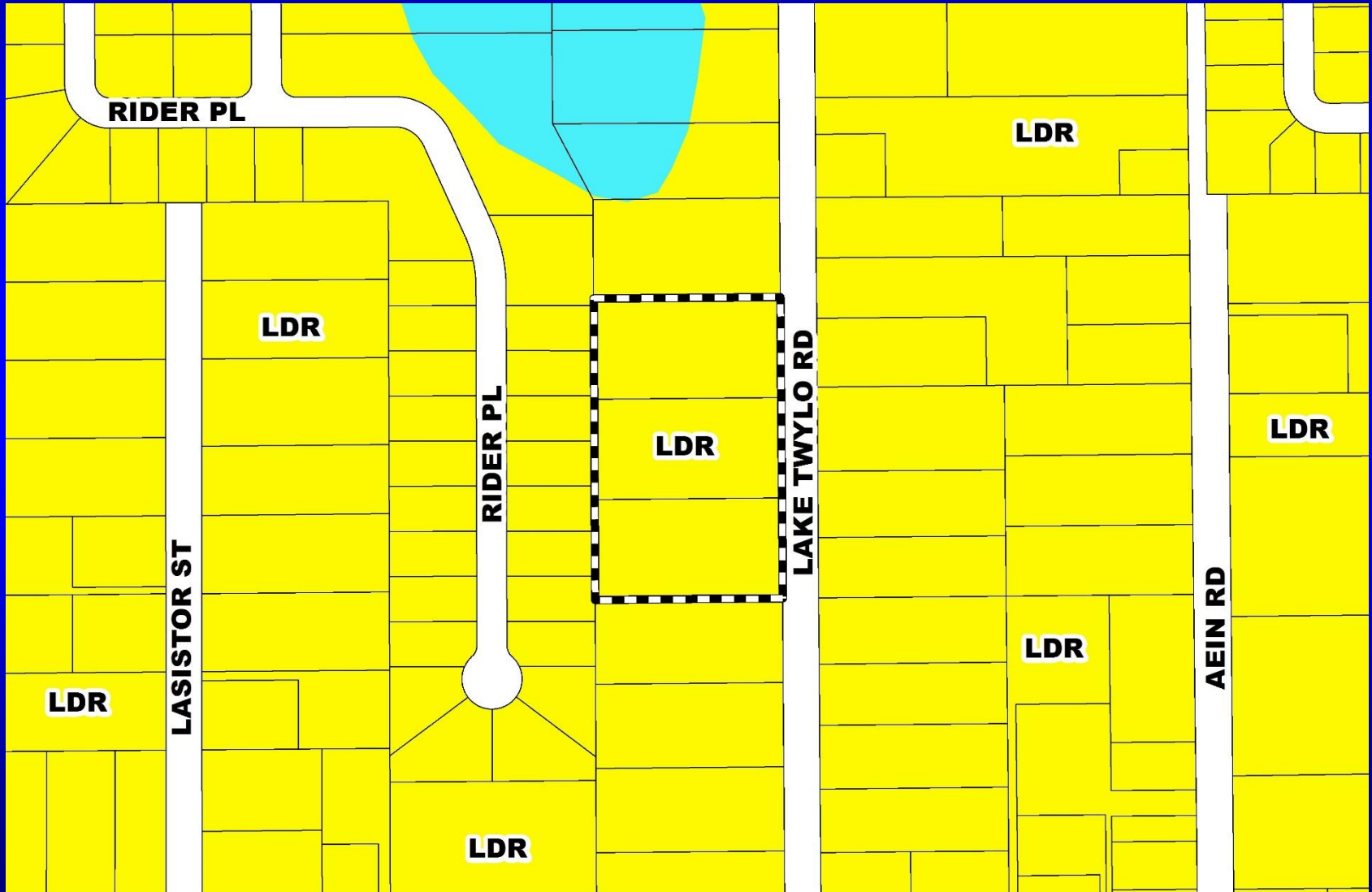
Case:	RZ-17-07-017
Applicant:	Quang Lam, Lam Civil Engineering, Inc.
District:	5
Acreage:	3.56 gross acres
Location:	3200 Lake Twylo Road; or generally on the west side of Lake Twylo Road, approximately 800 feet north of Buck Road
From:	A-2 (Farmland Rural District)
To:	R-1A (Single-Family Dwelling District)
Proposed Use:	Up to ten (10) single-family detached homes



RZ-17-07-017 - 3200 Lake Twylo Road

Conventional Rezoning

Future Land Use Map

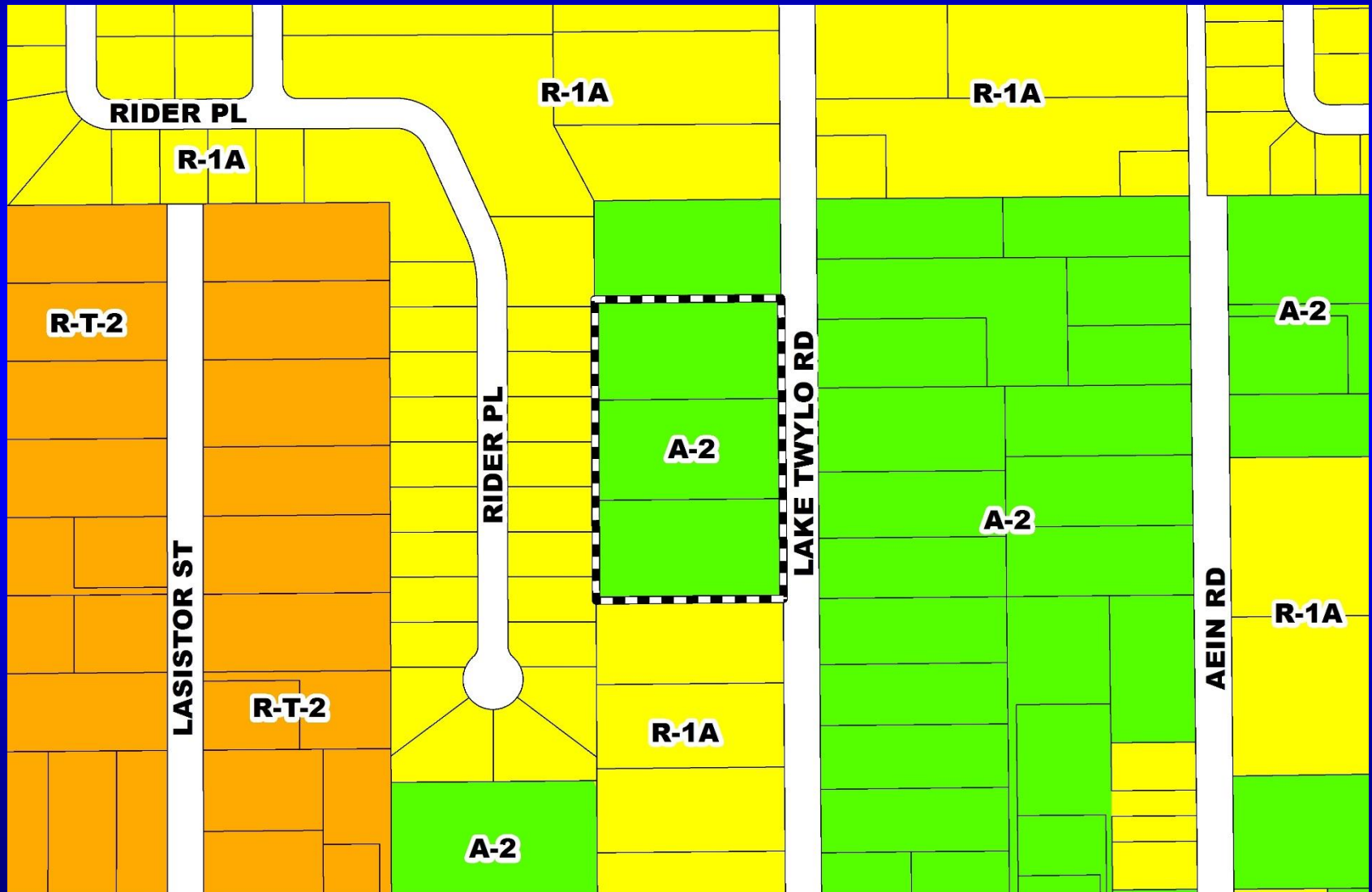




RZ-17-07-017 - 3200 Lake Twylo Road

Conventional Rezoning

Zoning Map

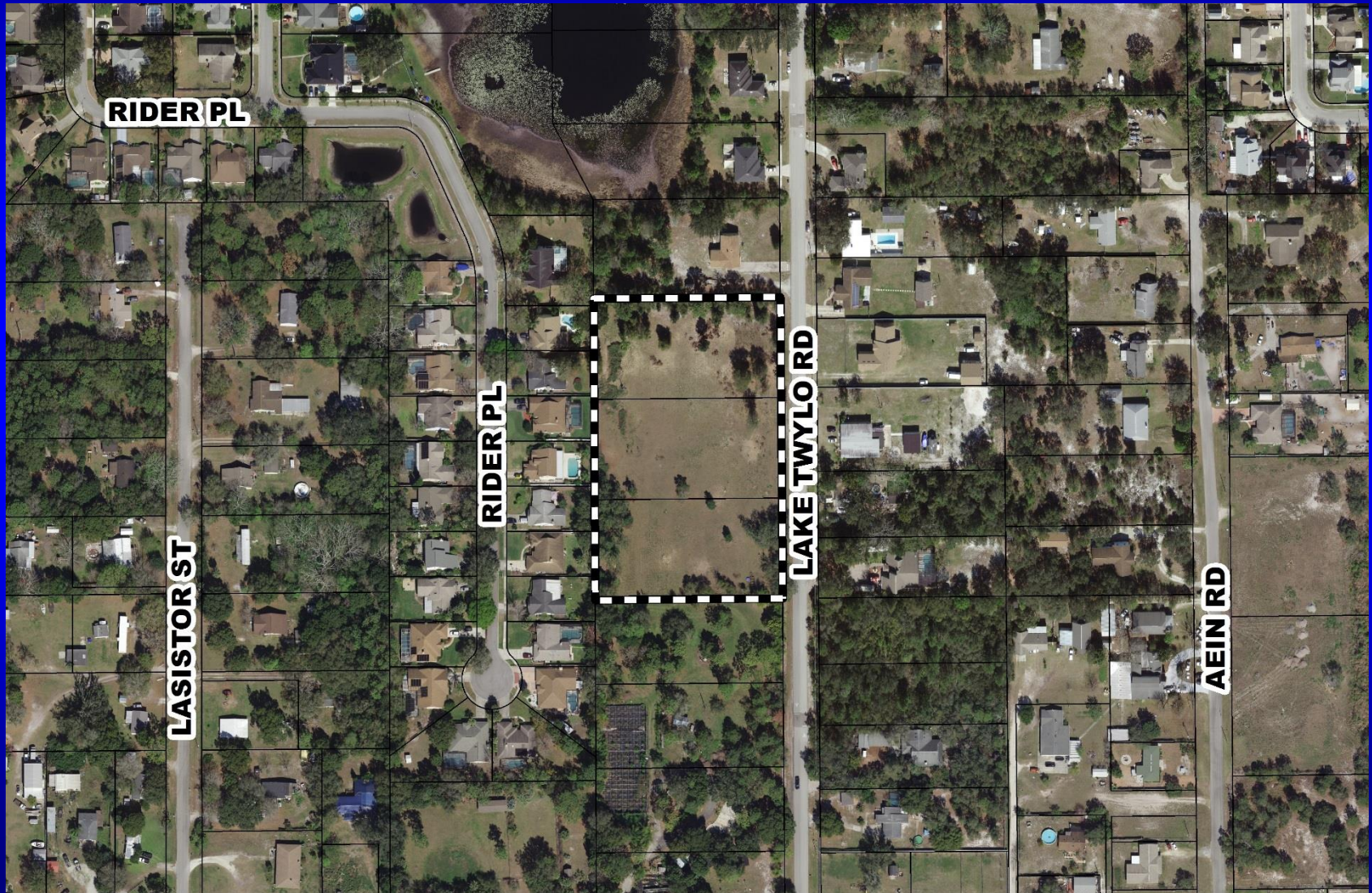




RZ-17-07-017 - 3200 Lake Twylo Road

Conventional Rezoning

Aerial Map





Action Requested

Make a finding of consistency with the Comprehensive Plan (CP) and approve the requested R-1A (Single-Family Dwelling District) zoning.

District 5



Board of County Commissioners

Public Hearings

October 31, 2017