



*Board of County Commissioners*

# Public Hearings

**December 19, 2017**



# **Kurtyka**

## **Planned Development / Land Use Plan (PD/LUP)**

**Case:** LUP-14-03-069

**Project Name:** Kurtyka PD / LUP

**Applicant:** Jim Hall, VHB, Inc.

**District:** 3

**Acreage:** 17.56 gross acres

**Location:** 2004 Gregory Road; or generally located on the west side of Gregory Road, approximately 1,300 feet south of Berry Dease Road

**Request:** Subdivide property into forty-three (43) lots with single-family detached residential dwelling units.



# Action Requested

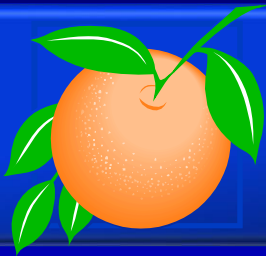
**Continue the Kurtyka Planned Development / Land Use Plan (PD/LUP) to the February 6, 2018 BCC meeting at 2:00 p.m.**

**District 3**

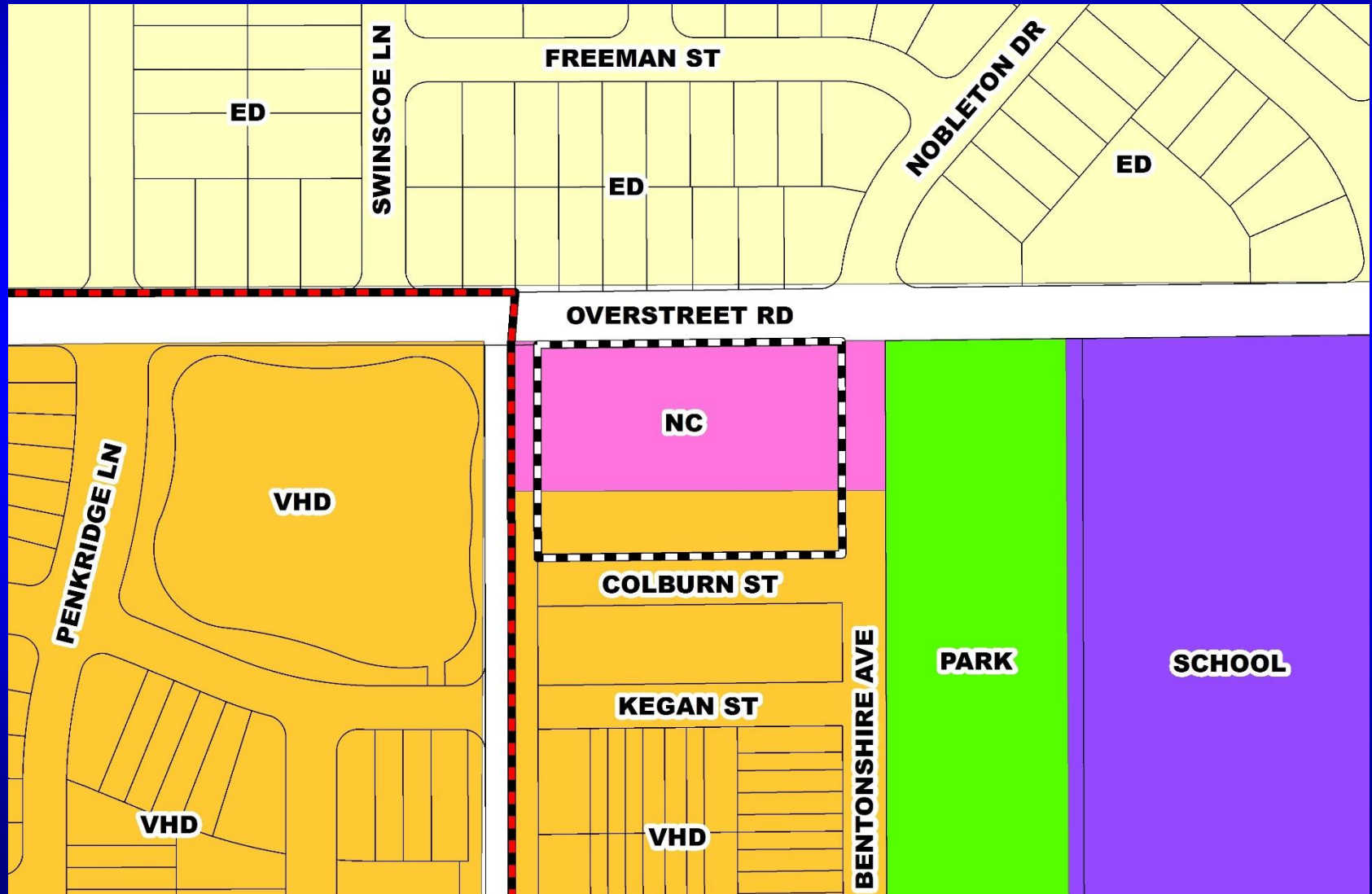


# Lake Sawyer Neighborhood Planned Development / Land Use Plan (PD/LUP)

<b>Case:</b>	CDR-17-06-214
<b>Project Name:</b>	Lake Sawyer Neighborhood PD / LUP
<b>Applicant:</b>	Carl Hansla, Ladybird Florida Properties, LLC
<b>District:</b>	1
<b>Acreage:</b>	796.30 gross acres ( <i>overall PD</i> ) 1.93 gross acres ( <i>affected parcel only</i> )
<b>Location:</b>	Generally south of Overstreet Road and west of Bentonshire Avenue
<b>Request:</b>	To incorporate eight (8) waivers relating to setbacks, entry orientation, lot width, and sidewalk & wall placement from Orange County Code – Original Village PD Code for a proposed educational facility use within PD Parcel 12 only.

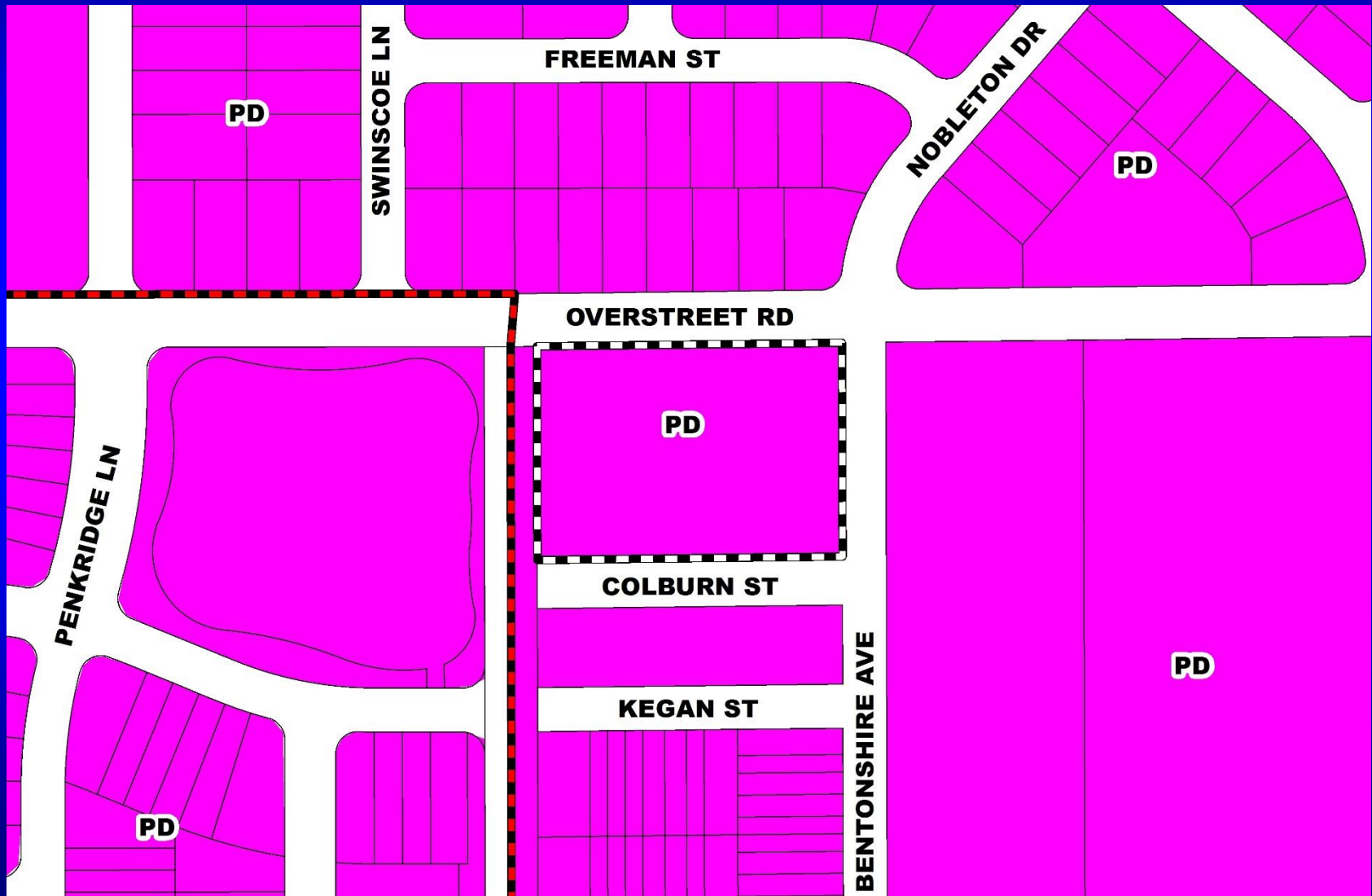


# Lake Sawyer Neighborhood Planned Development / Land Use Plan (PD/LUP) Future Land Use Map





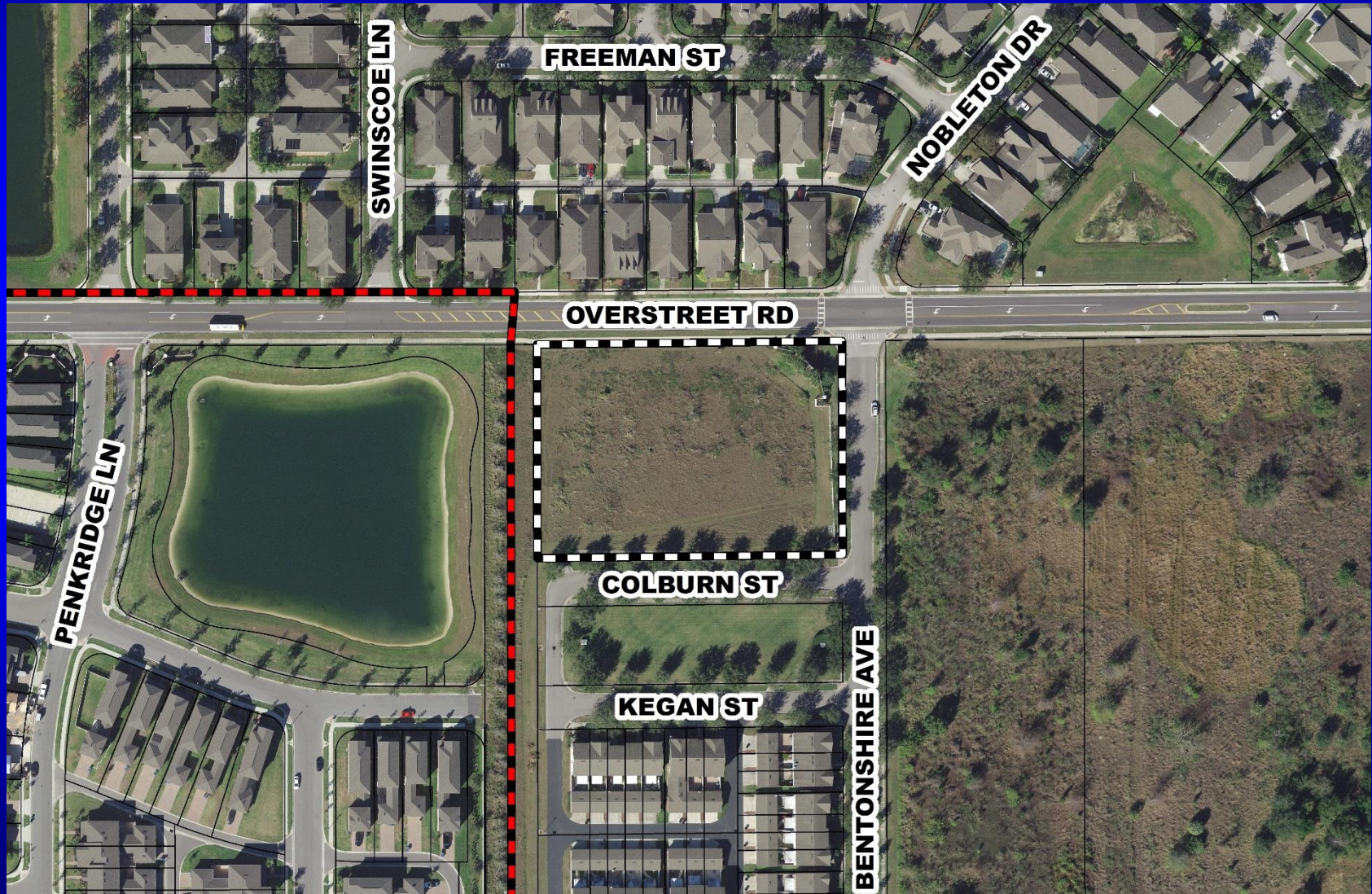
# Lake Sawyer Neighborhood Planned Development / Land Use Plan (PD/LUP) Zoning Map



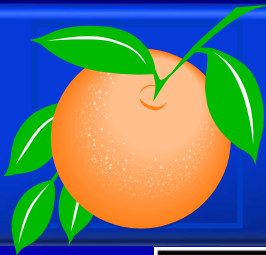




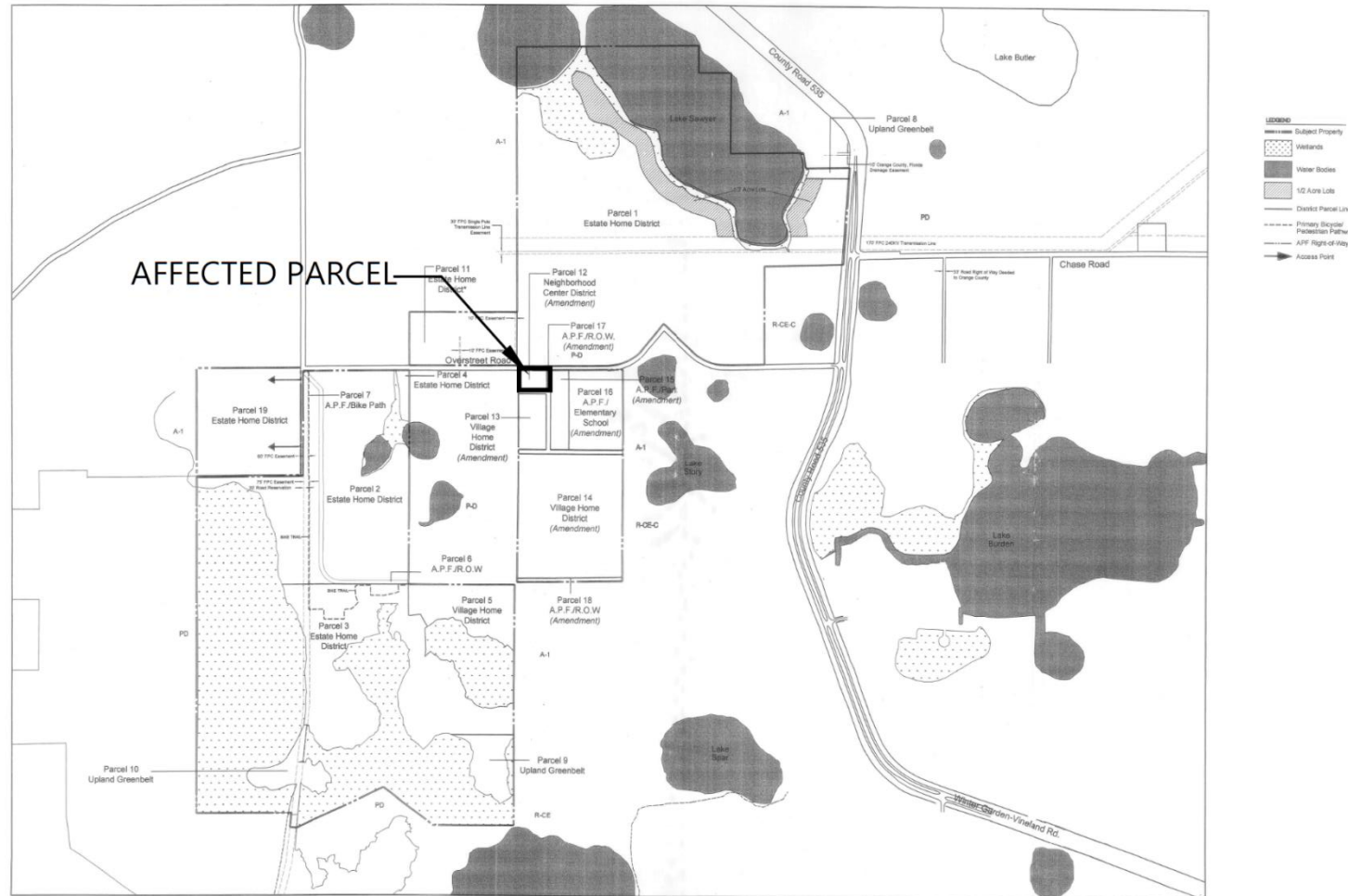
# Lake Sawyer Neighborhood Planned Development / Land Use Plan (PD/LUP) Aerial Map







# Lake Sawyer Neighborhood Planned Development / Land Use Plan (PD/LUP) Overall Land Use Plan

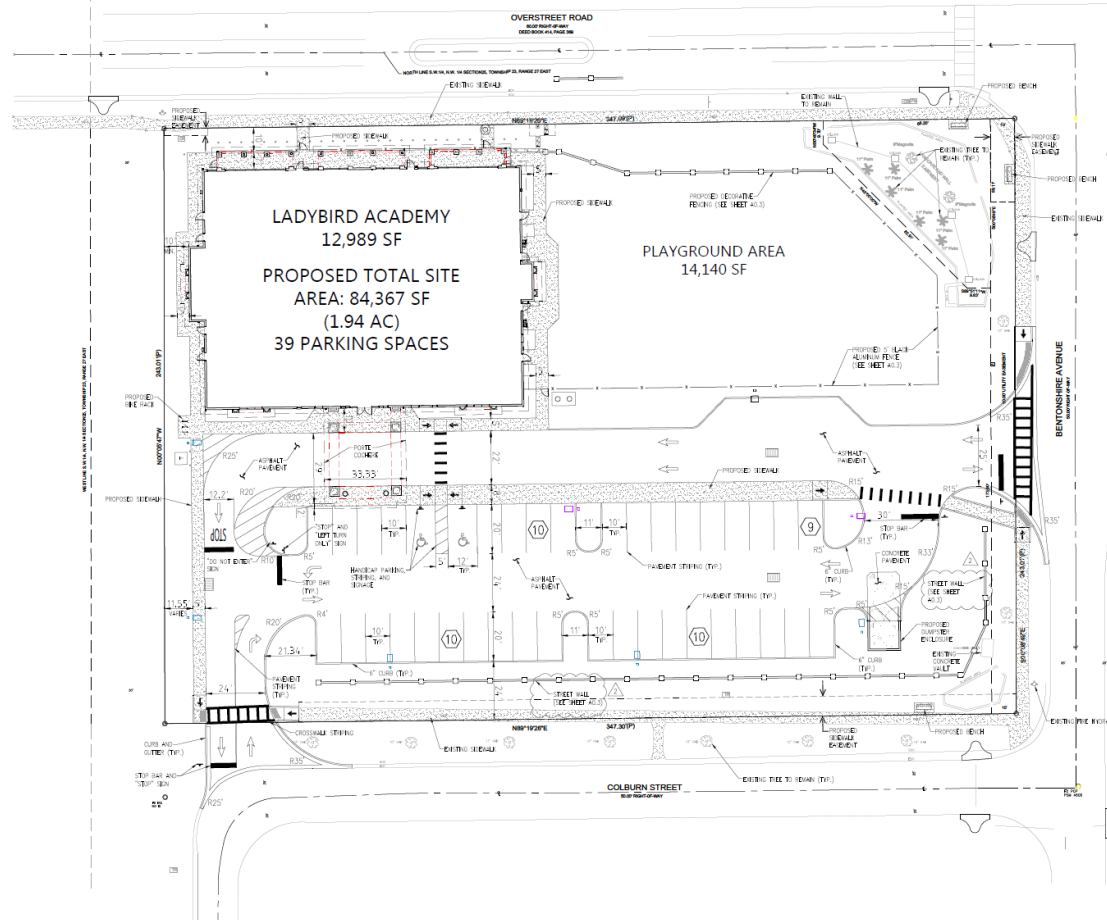






# Lake Sawyer Neighborhood Planned Development / Land Use Plan (PD/LUP) Conceptual Development Plan

WICKHAM PARK  
TRACT 3, LYING IN SECTION 25, TOWNSHIP 23 SOUTH, RANGE 27 EAST,  
ORANGE COUNTY, FLORIDA.



MASTER DEVELOPMENT PLAN



# Action Requested

**Make a finding of consistency with the Comprehensive Plan (CP) and approve the substantial change to the Lake Sawyer Neighborhood Planned Development / Land Use Plan (PD/LUP) dated “Received November 7, 2017”, subject to the conditions listed under the DRC Recommendation in the Staff Report.**

**District 1**



*Board of County Commissioners*

# Public Hearings

**December 19, 2017**