

DISTANCE SEPARATION RULE – SCHOOLS

Sec. 38-1415

2016: Distance shall be measured “to the nearest point of the school grounds in use as **part of the school facilities.**”

2018: Distance shall be measured “to any entrance to the school **property** that is used by students.”

Revised

2018:

Distance shall be measured “to any entrance to the school **property building** that is used by students.”

(Emphasis added.)



Elite Preparatory Academy

- 30,000 sq.ft.
private school

Located in Oak Ridge
Office Park

- 5 buildings
totaling 422,746
sq.ft.

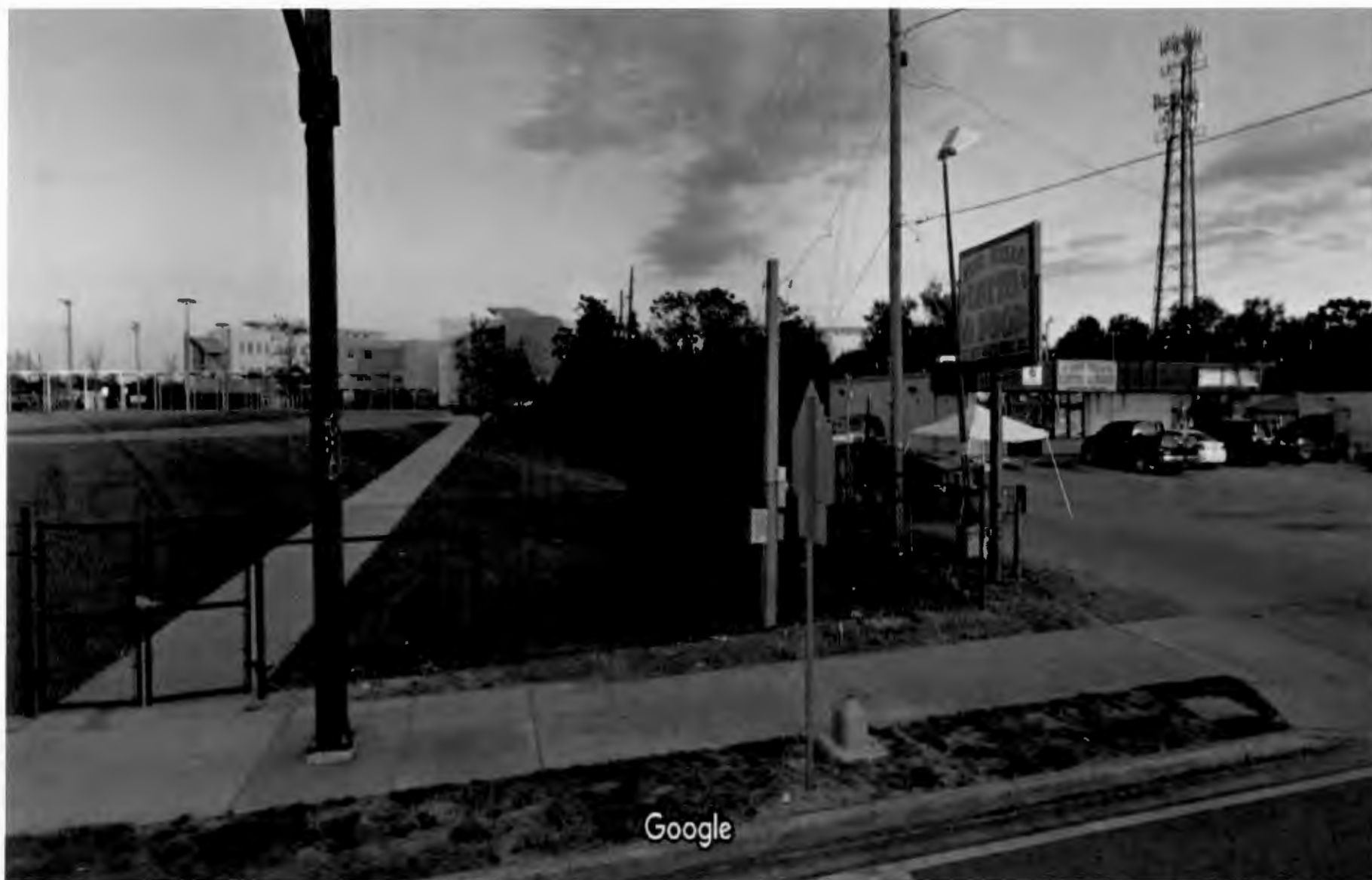
- 21 Acres

- 3 driveways



Terrace at Florida Mall

- 5,000 sq.ft.
School space available
- 3 buildings
totaling 128,390
sq.ft.
- 24.8 Acres
- 4 driveways





Chapter 38, Article I, Definitions:

“Building” includes any structure built for the shelter or protection of persons or property of any kind, with some exceptions not applicable to schools.