



Interoffice Memorandum

December 15, 2017

TO: Mayor Teresa Jacobs
and Board of County Commissioners

FROM: Mark V. Massaro, P.E., Director, Public Works Department *Mark V. Massaro*

CONTACT PERSON: Christine N. Lofye, P. E., Manager *CN*
Traffic Engineering Division

PHONE NUMBER: (407) 836-7890

SUBJ: Installation of Traffic Control Devices and "No Parking" signs in Hawksmoor – Phase 1

Our staff recommends that the following traffic control devices be installed in Hawksmoor – Phase 1:

Install "STOP" signs on:

- Rock Coast Drive (SB-west leg) at Wingspread Loop (N)
- Rock Coast Drive (NB-west leg) at Wingspread Loop (N)
- Rock Coast Drive (SB-east leg) at Wingspread Loop (N)
- Rock Coast Drive (SB-west leg) at Taliesin Street
- Rock Coast Drive (SB-east leg) at Taliesin Street
- Rock Coast Drive (NB-east leg) at Wingspread Loop (N)
- Harper Studio Lane at Taliesin Street
- Harper Studio Lane at Wingspread Loop
- Prairie School Drive at Marina Bay Drive (N)
- Parkwyn Street at Wingspread Loop (S)
- Parkwyn Street (EB) at Rock Coast Drive (west leg)
- Rock Coast Drive at Old YMCA Road
- Parkwyn Street (WB) at Rock Coast Drive (west leg)
- Rock Coast Drive (NB-west leg) at Taliesin Street
- Rock Coast Drive (NB-east leg) at Taliesin Street
- Rock Coast Drive (SB-east leg) at Parkwyn Street
- Taliesin Street at Graycliff Avenue
- Graycliff Avenue at Parkwyn Street
- Graycliff Avenue at Wingspread Loop
- Treadwell Street at Graycliff Avenue
- Glenlloyd Avenue at Treadwell Street
- Glenlloyd Avenue at Wingspread Loop
- Wingspread Loop at Marina Bay Drive
- Treadwell Street (EB) at Marina Bay Drive
- Parkwyn Street at Marina Bay Drive
- Marina Bay Drive at Old YMCA Road
- Prairie School Drive (S) at Marina Bay Drive
- Treadwell Street (WB) at Marina Bay Drive
- Prairie School Drive (N) at Marina Bay Drive

December 15, 2017

SUBJ: **Installation of Traffic Control Devices and "No Parking" signs in Hawksmoor – Phase 1**

Page 2

The Fire Marshal recommends that the following "No Parking" signs be installed in Hawksmoor – Phase 1:

Install "NO PARKING" signs on:

Wingspread Loop
Taliesin Street
Harper Studio Lane
Graycliff Avenue
Rock Coast Drive
Parkwyn Street
Marina Bay Drive
Treadwell Street
Prairie School Drive

Action Requested: Approval of Traffic Control Device and "No Parking" sign installations in Hawksmoor – Phase 1. District 1.

MVM/CNL/AHW

Attachments

HAWKSMOOR PHASE 1
A PORTION OF SECTIONS 31 AND 32, TOWNSHIP 23 SOUTH, RANGE 27 EAST,
ORANGE COUNTY, FLORIDA
DISTRICT # 1

STOP/STREET

<u>(1)</u>	(Ft N)	on Rock Coast Drive (SB-west leg) at Wingspread Loop (N)	16500 16800
<u>(2)</u>	(Ft S)	on Rock Coast Drive (NB-west leg) at Wingspread Loop (N)	16500 16800
<u>(3)</u>	(Ft N)	on Rock Coast Drive (SB-east leg) at Wingspread Loop (N)	16700 16700
<u>(4)</u>	(Ft N)	on Rock Coast Drive (SB-west leg) at Taliesin Street	16500 16300
<u>(5)</u>	(Ft N)	on Rock Coast Drive (SB-east leg) at Taliesin Street	16200 16700
<u>(6)</u>	(Ft S)	on Rock Coast Drive (NB-east leg) at Wingspread Loop (N)	16700 16700
<u>(7)</u>	(Ft N)	on Harper Studio Lane at Taliesin Street	00 16200
<u>(8)</u>	(Ft S)	on Harper Studio Lane at Wingspread Loop	00 16600
<u>(9)</u>	(Ft E)	on Prairie School Drive at Marina Bay Drive (N)	16500 16000
<u>(10)</u>	(Ft E)	on Parkwyn Street at Wingspread Loop (S)	16000 17000
<u>(11)</u>	(Ft W)	on Parkwyn Street (EB) at Rock Coast Drive (west leg)	16400 16000
<u>(12)</u>	(Ft N)	on Rock Coast Drive (9 inch) at Old YMCA Road (9 inch)	16300 17400
<u>(13)</u>	(Ft E)	on Parkwyn Street (WB) at Rock Coast Drive (west leg)	16400 16000
<u>(14)</u>	(Ft S)	on Rock Coast Drive (NB-west leg) at Taliesin Street	16500 16700
<u>(15)</u>	(Ft S)	on Rock Coast Drive (NB-east leg) at Taliesin Street	16700 16200
<u>(16)</u>	(Ft N)	on Rock Coast Drive (SB-east leg) at Parkwyn Street	16800 16000

<u>(17)</u>	(Ft W)	on Taliesin Street at Graycliff Avenue	16000 8100
<u>(18)</u>	(Ft N)	on Graycliff Avenue at Parkwyn Street	8200 16100
<u>(19)</u>	(Ft S)	on Graycliff Avenue at Wingspread Loop	8000 16500
<u>(20)</u>	(Ft E)	on Treadwell Street at Graycliff Avenue	16200 8200
<u>(21)</u>	(Ft N)	on Glenlloyd Avenue at Treadwell Street	8100 16100
<u>(22)</u>	(Ft S)	on Glenlloyd Avenue at Wingspread Loop	8000 16500
<u>(23)</u>	(Ft W)	on Wingspread Loop at Marina Bay Drive	16500 16000
<u>(24)</u>	(Ft W)	on Treadwell Street (EB) at Marina Bay Drive	16000 15900
<u>(25)</u>	(Ft W)	on Parkwyn Street at Marina Bay Drive	15800 16200
<u>(26)</u>	(Ft N)	on Marina Bay Drive (9 inch) at Old YMCA Road (9 inch)	15800 16800
<u>(27)</u>	(Ft E)	on Prairie School Drive (S) at Marina Bay Drive	16200 15800
<u>(28)</u>	(Ft E)	on Treadwell Street (WB) at Marina Bay Drive	16000 15900
<u>(29)</u>	(Ft E)	on Prairie School Drive (N) at Marina Bay Drive	16500 16000

SPEED LIMIT 25 MPH

<u>(30)</u>	(Ft S)	on Rock Coast Drive at Parkwyn Street
<u>(31)</u>	(Ft S)	on Marina Bay Drive at Prairie School Drive

KEEP RIGHT

<u>(32)</u>	(Ft N)	on Marina Bay Drive at Prairie School Drive
<u>(33)</u>	(Ft N)	on Marina Bay Drive at Prairie School Drive

- | | | |
|--------------------|---------------|--|
| <u>(34)</u> | (Ft S) | on Rock Coast Drive
at Parkwyn Street |
| <u>(35)</u> | (Ft N) | on Rock Coast Drive
at Old YMCA Road |
| <u>(36)</u> | (Ft S) | on Marina Bay Drive
at Wingspread Loop |
| <u>(37)</u> | (Ft N) | on Marina Bay Drive
at Treadwell Street |
| <u>(38)</u> | (Ft S) | on Marina Bay Drive
at Treadwell Street |
| <u>(39)</u> | (Ft N) | on Marina Bay Drive
at Parkwyn Street |
| <u>(40)</u> | (Ft S) | on Marina Bay Drive
at Parkwyn Street |
| <u>(41)</u> | (Ft N) | on Marina Bay Drive
at Old YMCA Road |

END OF ROAD TREATMENT

- | | | |
|---------------------|---------------|--|
| <u>(42)</u> | (Ft W) | on Wingspread Loop
at Rock Coast Drive |
| <u>(43)</u> | (Ft W) | on Taliesin Street
at Rock Coast Drive |
| <u>(44)</u> | (Ft N) | on Marina Bay Drive
at Prairie School Drive |
| <u>(45)</u> | (Ft N) | on Wingspread Loop
at Parkwyn Street |
| <u>(45B)</u> | (Ft S) | on Wingspread Loop
at Parkwyn Street |
| <u>(46)</u> | (Ft E) | on Prairie School Drive (S)
at Marina Bay Drive |
| <u>(47)</u> | (Ft E) | on Treadwell Street
at Marina Bay Drive |
| <u>(48)</u> | (Ft E) | on Prairie School Drive (N)
at Marina Bay Drive |

STOP/ALLEYWAYS

- | | | |
|---------------------|---------------|---|
| <u>(49a)</u> | (Ft E) | on Broadacre Alley
at Rock Coast Drive (W) |
|---------------------|---------------|---|

<u>(50a)</u>	(Ft W)	on Broadacre Alley (EB) at Rock Coast Drive (E)
<u>(51a)</u>	(Ft E)	on Broadacre Alley (WB) at Rock Coast Drive (E)
<u>(52a)</u>	(Ft W)	on Broadacre Alley (EB) at Harper Studio Lane
<u>(53a)</u>	(Ft E)	on Broadacre Alley (WB) at Harper Studio Lane
<u>(54a)</u>	(Ft W)	on Broadacre Alley (EB) at Graycliff Avenue
<u>(55a)</u>	(Ft E)	on Usonia Alley at Rock Coast Drive (W)
<u>(56a)</u>	(Ft W)	on Usonia Alley at Rock Coast Drive (E)
<u>(57a)</u>	(Ft N)	on Butterfly Wood Alley at Parkwyn Street
<u>(58a)</u>	(Ft E)	on Broadacre Alley (WB) at Graycliff Avenue
<u>(59a)</u>	(Ft W)	on Broadacre Alley at Glenlloyd Avenue
<u>(60a)</u>	(Ft N)	on Suntop Alley (SB) at Treadwell Street
<u>(61a)</u>	(Ft S)	on Spring Green Alley at Wingspread Loop
<u>(62a)</u>	(Ft N)	on Spring Green Alley (SB) at Treadwell Street
<u>(63a)</u>	(Ft S)	on Suntop Alley (NB) at Treadwell Street
<u>(64a)</u>	(Ft N)	on Suntop Alley at Parkwyn Street
<u>(65a)</u>	(Ft S)	on Spring Green Alley (NB) at Treadwell Street
<u>(66a)</u>	(Ft S)	on Spring Green Alley at Parkwyn Street

NO PARKING with arrows

- (67)** on Wingspread Loop starting approximately 130ft west of Rock Coast Drive (W) extending east to Prairie School Drive on the north side and on Wingspread Loop from Parkwyn Street extending south approximately 680ft on the west side
- (68)** on Taliesin Street starting approximately 130ft west of Rock Coast Drive (W) extending east to Graycliff Avenue on the north side
- (69)** on Harper Studio Lane from Taliesin Street extending north to Wingspread Loop on the west side
- (70)** on Graycliff Avenue from Wingspread Loop extending south to Taliesin Street on the west side and from Taliesin Street extending south to Parkwyn Street on the east side
- (71)** on Rock Coast Drive from Old YMCA Road extending north to Parkwyn Street on the east and west sides and from Parkwyn Street extending north to Wingspread Loop on the west side and from Wingspread Loop extending north, east and south to Usonia Alley on the east, south and west sides
- (72)** on Parkwyn Street from Wingspread Loop extending east to Marina Bay Drive on the south side
- (73)** on Marina Bay Drive from Old YMCA Road extending north to Parkwyn Street (S) on the east and west sides
- (74)** on Treadwell Street extending east from Graycliff Avenue to approximately 150ft east of Marina Bay Drive on the north side
- (75)** on Prairie School Drive (N) from Marina Bay Drive extending east Approximately 150ft on the north side and on Prairie School Drive (S) from Marina Bay Drive extending east approximately 150ft on the south side

ahw/

12/15/2017

HAWKSMOOR - PHASE 1

A PORTION OF SECTIONS 31 AND 32, TOWNSHIP 23 SOUTH, RANGE 27 EAST,
ORANGE COUNTY, FLORIDA

SHEET 1 OF 14

PLAT BOOK 93 PAGE 108

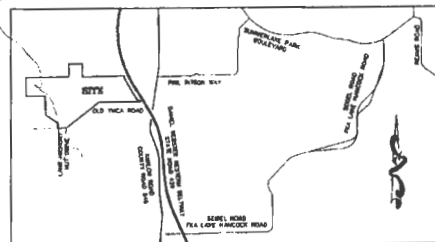
LEGAL DESCRIPTION:

A PARCEL OF LAND LYING IN SECTIONS 31 AND 32, TOWNSHIP 23 SOUTH, RANGE 27 EAST,
ORANGE COUNTY, FLORIDA.

BEING MORE PARTICULARLY DESCRIBED AS FOLLOWS:

COMMENCE AT THE SOUTHWEST CORNER OF AFORESAID SECTION 31, THENCE RUN NORTH 89°27'12" EAST ALONG THE SOUTH LINE OF THE SOUTHWEST 1/4 OF SAID SECTION 31, A DISTANCE OF 1808.02 FEET; THENCE DEPARTING SAID SOUTH LINE, RUN NORTH 00°34'48" WEST FOR A DISTANCE OF 3600 FEET TO THE POINT OF BEGINNING; ALONG THE NORTH RIGHT-OF-WAY LINE OF OLD YACCA ROAD, ACCORDING TO DEED BOOK 673, PAGE 348 OF THE PUBLIC RECORDS OF ORANGE COUNTY, FLORIDA, THENCE DEPARTING SAID NORTH RIGHT-OF-WAY LINE, RUN NORTH 00°34'48" WEST FOR A DISTANCE OF 383.13 FEET; THENCE RUN NORTH 84°34'00" WEST FOR A DISTANCE OF 717.77 FEET; THENCE RUN NORTH 00°45'56" WEST FOR A DISTANCE OF 834.14 FEET; THENCE RUN NORTH 89°27'28" WEST FOR A DISTANCE OF 1022.70 FEET TO A POINT ON THE WEST LINE OF THE SOUTHWEST 1/4 OF AFORESAID SECTION 31; THENCE RUN NORTH 00°42'24" EAST ALONG SAID WEST LINE FOR A DISTANCE OF 882.00 FEET TO THE NORTHWEST CORNER OF SAID SOUTHWEST 1/4 OF SECTION 31; THENCE RUN NORTH 89°48'28" EAST ALONG THE NORTH LINE OF SAID SOUTHWEST 1/4 OF SECTION 31, A DISTANCE OF 2184.50 FEET TO THE SOUTHWEST CORNER OF THE SOUTHWEST 1/4 OF THE SOUTHWEST 1/4 OF SECTION 31; THENCE RUN NORTH 00°11'48" EAST ALONG THE WEST LINE OF SAID SOUTHWEST 1/4 OF SECTION 31, A DISTANCE OF 881.84 FEET TO THE NORTHWEST CORNER OF THE SOUTHWEST 1/4 OF THE SOUTHWEST 1/4 OF SECTION 31; THENCE RUN SOUTH 00°21'18" WEST ALONG THE EAST LINE OF THE NORTHWEST 1/4 OF SAID SECTION 31 FOR A DISTANCE OF 656.88 FEET TO THE NORTHWEST CORNER OF THE SOUTHWEST 1/4 OF SAID SECTION 31; THENCE RUN NORTH 89°48'28" EAST ALONG THE NORTH LINE OF THE SOUTHWEST 1/4 OF SAID SECTION 31 FOR A DISTANCE OF 2143.43 FEET TO THE WEST RIGHT-OF-WAY LINE OF WESTERN BELTWAY (STATE ROAD 435) ACCORDING TO FLORIDA DEPARTMENT OF TRANSPORTATION MAP SECTION 73320-8450-653 AND SUPPLEMENTAL ORDER OF TAKING IN OFFICIAL RECORDS BOOK 7360, PAGE 1028 THROUGH 1030, INCLUSIVE, OF THE PUBLIC RECORDS OF ORANGE COUNTY, FLORIDA; THENCE RUN ALONG SAID WEST RIGHT-OF-WAY LINE THE FOLLOWING FIVE (5) COURSES: SOUTH 00°17'28" EAST FOR A DISTANCE OF 81.28 FEET TO A POINT ON A NON-TANGENT CURVE, CONCAVE NORTHEASTERLY, HAVING A RADIUS OF 5326.00 FEET, A CHORD BEARING OF SOUTH 28°38'53" EAST AND A CHORD LENGTH OF 524.89 FEET; THENCE RUN SOUTHEASTERLY ALONG THE ARC OF SAID CURVE THROUGH A CENTRAL ANGLE OF 00°35'56" FOR A DISTANCE OF 2033.10 FEET TO A POINT OF TANGENCY; THENCE RUN SOUTH 31°29'21" EAST FOR A DISTANCE OF 804.75 FEET; THENCE RUN NORTH 89°48'28" EAST FOR A DISTANCE OF 133.89 FEET; THENCE RUN SOUTH 28°31'07" EAST FOR A DISTANCE OF 572.28 FEET TO A POINT ON THE AFORESAID NORTH RIGHT-OF-WAY LINE OF OLD YACCA ROAD; THENCE RUN ALONG SAID NORTH RIGHT-OF-WAY LINE THE FOLLOWING FOUR (4) COURSES: SOUTH 89°43'30" WEST FOR A DISTANCE OF 320.87 FEET TO A POINT ON THE EAST LINE OF THE SOUTHWEST 1/4 OF AFORESAID SECTION 31; THENCE RUN NORTH 89°28'25" WEST FOR A DISTANCE OF 1790.58 FEET; THENCE RUN SOUTH 31°28'13" WEST FOR A DISTANCE OF 2117.48 FEET; THENCE RUN SOUTH 89°27'12" WEST FOR A DISTANCE OF 484.42 FEET TO THE POINT OF BEGINNING.

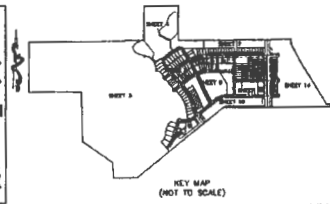
CONTAINS 208.41 ACRES, MORE OR LESS



VACUITY MAP
(NOT TO SCALE)



16 EAST PLANT STREET
WINTER HARBOR, FLORIDA 34787
(407) 834-8350



KEY MAP
(NOT TO SCALE)

SHEET INDEX:
SHEET 1 OF 14 - LEGAL DESCRIPTION, EDCATION, &
SURVEYOR'S NOTES
SHEET 2 OF 14 - BOUNDARY INFORMATION, LEGEND
SHEETS 3 THRU 14 - GEOLOGY

The property shown herein represents the lands included in the
Landlord Planned Development-Phase 1 Horizon West
Village II Preliminary Subdivision Plan (Case #PSP 15-07-200)
as approved by the Orange County Board of County
Commissioners on July 8, 2015, and the subdivision change
(Case #CCH-17-01-000) as approved by the Orange County
Board of County Commissioners on June 20, 2017.

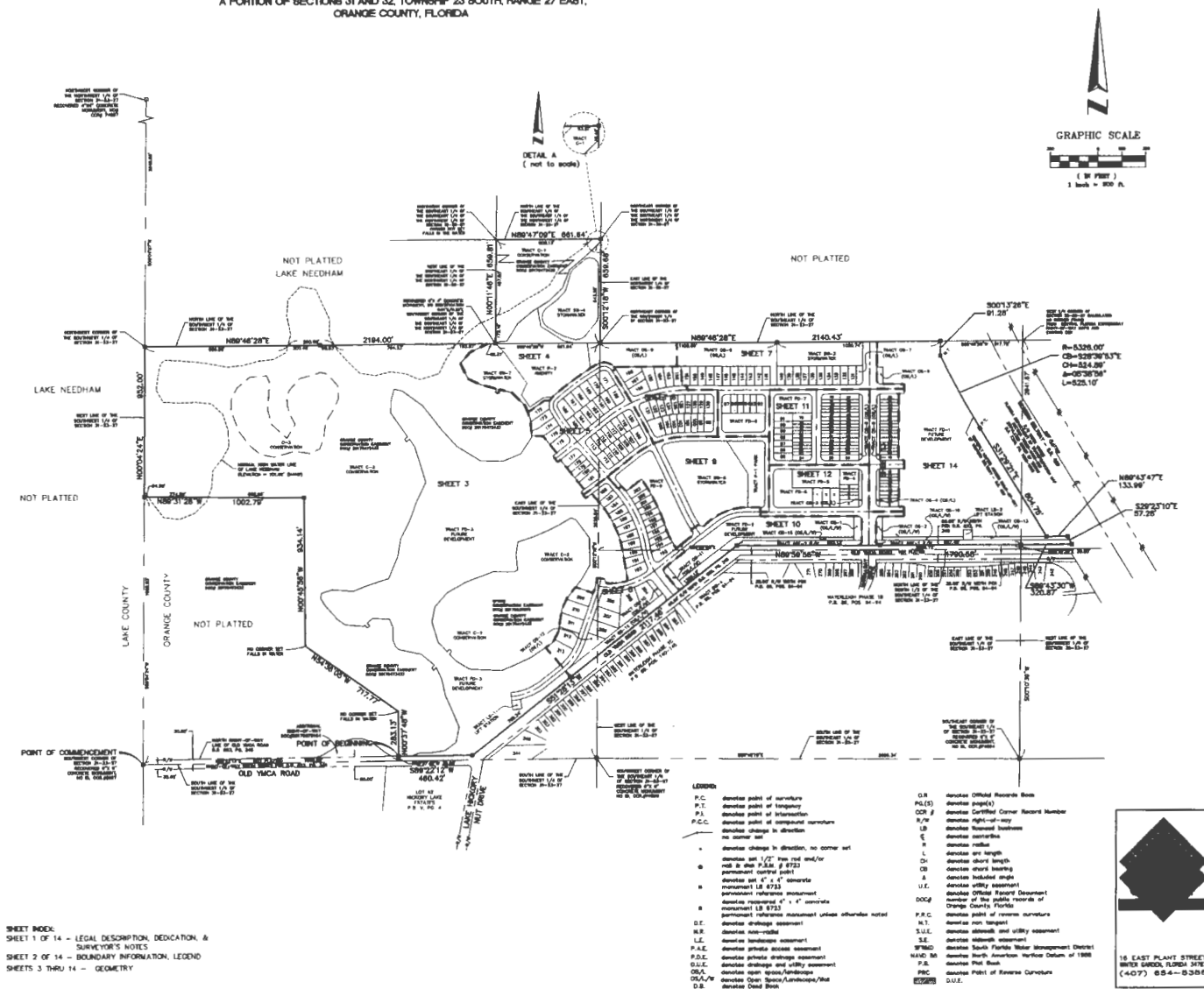
SURVEYOR'S NOTES:

1. REARINGS SHOWN HEREON ARE BASED ON THE SOUTH LINE OF THE SOUTHWEST 1/4 OF SECTION 31, TOWNSHIP 23 SOUTH, RANGE 27 EAST AS BEING SOUTH 89°48'18" EAST, AN ASSUMED BEARING FOR ANGULAR CORRECTION ONLY.
2. ALL LOT LINES ARE RADIAL, UNLESS OTHERWISE NOTED NON-RADIAL (N.R.).
3. ALL PLATTED UTILITY EASEMENTS SHALL ALSO BE EASEMENTS FOR THE CONSTRUCTION, INSTALLATION, MAINTENANCE, AND OPERATION OF CABLE TELEVISION SERVICES, PROVIDED, HOWEVER, NO SUCH CONSTRUCTION, INSTALLATION, MAINTENANCE, AND OPERATION OF CABLE TELEVISION SERVICES SHALL INTERFERE WITH THE FACILITIES AND SERVICES OF AN ELECTRIC, TELEPHONE, GAS, OR OTHER PUBLIC UTILITY. IN THE EVENT A CABLE TELEVISION COMPANY DAMAGES THE FACILITIES OF A PUBLIC UTILITY, IT SHALL BE SOLELY RESPONSIBLE FOR THE DAMAGES THIS SECTION SHALL NOT APPLY TO THOSE PRIVATE EASEMENTS GRANTED TO OR OBTAINED BY A PARTICULAR ELECTRIC, TELEPHONE, GAS, OR OTHER PUBLIC UTILITY. SUCH CONSTRUCTION, INSTALLATION, MAINTENANCE, AND OPERATION SHALL COMPLY WITH THE NATIONAL ELECTRICAL SAFETY CODE AS ADOPTED BY THE FLORIDA PUBLIC SERVICE COMMISSION.
4. THE PRIVATE ACCESS EASEMENTS (PAE) AND PRIVATE DRAINAGE EASEMENTS (PDE) SHOWN HEREON ARE RESERVED FOR THE EXCLUSIVE USE AND BENEFIT OF THE FOLLOWING ENTITIES AND FOR THE FOLLOWING PURPOSES: (A) HAWKSMOOR COMMUNITY OWNERS ASSOCIATION (HCOA); (B) THE ASSOCIATION FOR THE PURPOSE OF EXERCISING ALL POWERS AND RESPONSIBILITIES DELEGATED TO THE ASSOCIATION PURSUANT TO THE "COMMUNITY DECLARATION FOR HAWKSMOOR" RECORDED IN THE PUBLIC RECORDS OF ORANGE COUNTY, FLORIDA (THE DECLARATION); (C) THE OWNERS OF THE LOTS WITHIN THE PROPERTY FOR PURPOSES OF ACCESS TO AND FROM PUBLIC STREETS AND LOTS LYING ADJACENT TO SUCH PRIVATE ACCESS AND DRAINAGE EASEMENTS; AND (D) ORANGE COUNTY AND ITS EMPLOYEES AND AGENTS, SOLELY FOR THE PURPOSE OF PERFORMING MUNICIPAL AND GOVERNMENT FUNCTIONS REASONABLY NECESSARY TO PROMOTE AND PROTECT THE HEALTH, SAFETY AND WELFARE OF THE PROPERTY AND OWNERS THEREOF OR RESIDENTS THEREON, AS WELL AS SUCH OWNERS' GUESTS AND INVITEES, INCLUDING BUT NOT LIMITED TO, POLICE, FIRE, AND EMERGENCY MEDICAL SERVICES. ANY ACCESS IMPROVEMENTS AND IMPEDIMENTS AND RELATED FACILITIES CONSTRUCTED WITHIN THE AREA OF THE AFORESAID PRIVATE ACCESS AND DRAINAGE EASEMENTS SHALL BE MAINTAINED BY THE ASSOCIATION. ALL PRIVATE ACCESS AND DRAINAGE EASEMENTS ARE NOT DEDICATED TO THE PUBLIC, BUT ARE PRIVATE, AND ARE HEREBY RESERVED BY HAWKSMOOR, LLC, A DELAWARE LIMITED LIABILITY COMPANY. (THE OWNER) IN FAVOR OF THE ASSOCIATION, AND SHALL BE MAINTAINED BY THE ASSOCIATION.
5. TRACTS C-1, C-2 AND C-3 (CONSERVATION) SHOWN HEREON ARE COMMON AREAS AS DEFINED IN THE DECLARATION AND SHALL BE OWNED BY THE ASSOCIATION. WITH DEVELOPMENT RIGHTS HEREBY DEDICATED TO ORANGE COUNTY, FLORIDA, NO CONSTRUCTION, CLEARING, GRADING OR ALTERATION IS PERMITTED WITHOUT PRIOR APPROVAL OF ORANGE COUNTY, FLORIDA AND/OR ALL OTHER APPLICABLE JURISDICTIONAL AGENCIES.
6. TRACTS OS-1, OS-2, OS-11, OS-13, OS-15, OS-16, OS-17, OS-18, OS-19, OS-20, OS-21, OS-22, OS-23, OS-24, OS-25, OS-26, OS-27, OS-28, OS-29, OS-30, OS-31, OS-32, OS-33, OS-34, OS-35, OS-36, OS-37, OS-38, OS-39, OS-40, OS-41, OS-42, OS-43, OS-44, OS-45, OS-46, OS-47, OS-48, OS-49, OS-50, OS-51, OS-52, OS-53, OS-54, OS-55, OS-56, OS-57, OS-58, OS-59, OS-60, OS-61, OS-62, OS-63, OS-64, OS-65, OS-66, OS-67, OS-68, OS-69, OS-70, OS-71, OS-72, OS-73, OS-74, OS-75, OS-76, OS-77, OS-78, OS-79, OS-80, OS-81, OS-82, OS-83, OS-84, OS-85, OS-86, OS-87, OS-88, OS-89, OS-90, OS-91, OS-92, OS-93, OS-94, OS-95, OS-96, OS-97, OS-98, OS-99, OS-100, OS-101, OS-102, OS-103, OS-104, OS-105, OS-106, OS-107, OS-108, OS-109, OS-110, OS-111, OS-112, OS-113, OS-114, OS-115, OS-116, OS-117, OS-118, OS-119, OS-120, OS-121, OS-122, OS-123, OS-124, OS-125, OS-126, OS-127, OS-128, OS-129, OS-130, OS-131, OS-132, OS-133, OS-134, OS-135, OS-136, OS-137, OS-138, OS-139, OS-140, OS-141, OS-142, OS-143, OS-144, OS-145, OS-146, OS-147, OS-148, OS-149, OS-150, OS-151, OS-152, OS-153, OS-154, OS-155, OS-156, OS-157, OS-158, OS-159, OS-160, OS-161, OS-162, OS-163, OS-164, OS-165, OS-166, OS-167, OS-168, OS-169, OS-170, OS-171, OS-172, OS-173, OS-174, OS-175, OS-176, OS-177, OS-178, OS-179, OS-180, OS-181, OS-182, OS-183, OS-184, OS-185, OS-186, OS-187, OS-188, OS-189, OS-190, OS-191, OS-192, OS-193, OS-194, OS-195, OS-196, OS-197, OS-198, OS-199, OS-200, OS-201, OS-202, OS-203, OS-204, OS-205, OS-206, OS-207, OS-208, OS-209, OS-210, OS-211, OS-212, OS-213, OS-214, OS-215, OS-216, OS-217, OS-218, OS-219, OS-220, OS-221, OS-222, OS-223, OS-224, OS-225, OS-226, OS-227, OS-228, OS-229, OS-230, OS-231, OS-232, OS-233, OS-234, OS-235, OS-236, OS-237, OS-238, OS-239, OS-240, OS-241, OS-242, OS-243, OS-244, OS-245, OS-246, OS-247, OS-248, OS-249, OS-250, OS-251, OS-252, OS-253, OS-254, OS-255, OS-256, OS-257, OS-258, OS-259, OS-260, OS-261, OS-262, OS-263, OS-264, OS-265, OS-266, OS-267, OS-268, OS-269, OS-270, OS-271, OS-272, OS-273, OS-274, OS-275, OS-276, OS-277, OS-278, OS-279, OS-280, OS-281, OS-282, OS-283, OS-284, OS-285, OS-286, OS-287, OS-288, OS-289, OS-290, OS-291, OS-292, OS-293, OS-294, OS-295, OS-296, OS-297, OS-298, OS-299, OS-300, OS-301, OS-302, OS-303, OS-304, OS-305, OS-306, OS-307, OS-308, OS-309, OS-310, OS-311, OS-312, OS-313, OS-314, OS-315, OS-316, OS-317, OS-318, OS-319, OS-320, OS-321, OS-322, OS-323, OS-324, OS-325, OS-326, OS-327, OS-328, OS-329, OS-330, OS-331, OS-332, OS-333, OS-334, OS-335, OS-336, OS-337, OS-338, OS-339, OS-340, OS-341, OS-342, OS-343, OS-344, OS-345, OS-346, OS-347, OS-348, OS-349, OS-350, OS-351, OS-352, OS-353, OS-354, OS-355, OS-356, OS-357, OS-358, OS-359, OS-360, OS-361, OS-362, OS-363, OS-364, OS-365, OS-366, OS-367, OS-368, OS-369, OS-370, OS-371, OS-372, OS-373, OS-374, OS-375, OS-376, OS-377, OS-378, OS-379, OS-380, OS-381, OS-382, OS-383, OS-384, OS-385, OS-386, OS-387, OS-388, OS-389, OS-390, OS-391, OS-392, OS-393, OS-394, OS-395, OS-396, OS-397, OS-398, OS-399, OS-400, OS-401, OS-402, OS-403, OS-404, OS-405, OS-406, OS-407, OS-408, OS-409, OS-410, OS-411, OS-412, OS-413, OS-414, OS-415, OS-416, OS-417, OS-418, OS-419, OS-420, OS-421, OS-422, OS-423, OS-424, OS-425, OS-426, OS-427, OS-428, OS-429, OS-430, OS-431, OS-432, OS-433, OS-434, OS-435, OS-436, OS-437, OS-438, OS-439, OS-440, OS-441, OS-442, OS-443, OS-444, OS-445, OS-446, OS-447, OS-448, OS-449, OS-450, OS-451, OS-452, OS-453, OS-454, OS-455, OS-456, OS-457, OS-458, OS-459, OS-460, OS-461, OS-462, OS-463, OS-464, OS-465, OS-466, OS-467, OS-468, OS-469, OS-470, OS-471, OS-472, OS-473, OS-474, OS-475, OS-476, OS-477, OS-478, OS-479, OS-480, OS-481, OS-482, OS-483, OS-484, OS-485, OS-486, OS-487, OS-488, OS-489, OS-490, OS-491, OS-492, OS-493, OS-494, OS-495, OS-496, OS-497, OS-498, OS-499, OS-500, OS-501, OS-502, OS-503, OS-504, OS-505, OS-506, OS-507, OS-508, OS-509, OS-510, OS-511, OS-512, OS-513, OS-514, OS-515, OS-516, OS-517, OS-518, OS-519, OS-520, OS-521, OS-522, OS-523, OS-524, OS-525, OS-526, OS-527, OS-528, OS-529, OS-530, OS-531, OS-532, OS-533, OS-534, OS-535, OS-536, OS-537, OS-538, OS-539, OS-540, OS-541, OS-542, OS-543, OS-544, OS-545, OS-546, OS-547, OS-548, OS-549, OS-550, OS-551, OS-552, OS-553, OS-554, OS-555, OS-556, OS-557, OS-558, OS-559, OS-560, OS-561, OS-562, OS-563, OS-564, OS-565, OS-566, OS-567, OS-568, OS-569, OS-570, OS-571, OS-572, OS-573, OS-574, OS-575, OS-576, OS-577, OS-578, OS-579, OS-580, OS-581, OS-582, OS-583, OS-584, OS-585, OS-586, OS-587, OS-588, OS-589, OS-590, OS-591, OS-592, OS-593, OS-594, OS-595, OS-596, OS-597, OS-598, OS-599, OS-600, OS-601, OS-602, OS-603, OS-604, OS-605, OS-606, OS-607, OS-608, OS-609, OS-610, OS-611, OS-612, OS-613, OS-614, OS-615, OS-616, OS-617, OS-618, OS-619, OS-620, OS-621, OS-622, OS-623, OS-624, OS-625, OS-626, OS-627, OS-628, OS-629, OS-630, OS-631, OS-632, OS-633, OS-634, OS-635, OS-636, OS-637, OS-638, OS-639, OS-640, OS-641, OS-642, OS-643, OS-644, OS-645, OS-646, OS-647, OS-648, OS-649, OS-650, OS-651, OS-652, OS-653, OS-654, OS-655, OS-656, OS-657, OS-658, OS-659, OS-660, OS-661, OS-662, OS-663, OS-664, OS-665, OS-666, OS-667, OS-668, OS-669, OS-670, OS-671, OS-672, OS-673, OS-674, OS-675, OS-676, OS-677, OS-678, OS-679, OS-680, OS-681, OS-682, OS-683, OS-684, OS-685, OS-686, OS-687, OS-688, OS-689, OS-690, OS-691, OS-692, OS-693, OS-694, OS-695, OS-696, OS-697, OS-698, OS-699, OS-700, OS-701, OS-702, OS-703, OS-704, OS-705, OS-706, OS-707, OS-708, OS-709, OS-710, OS-711, OS-712, OS-713, OS-714, OS-715, OS-716, OS-717, OS-718, OS-719, OS-720, OS-721, OS-722, OS-723, OS-724, OS-725, OS-726, OS-727, OS-728, OS-729, OS-730, OS-731, OS-732, OS-733, OS-734, OS-735, OS-736, OS-737, OS-738, OS-739, OS-740, OS-741, OS-742, OS-743, OS-744, OS-745, OS-746, OS-747, OS-748, OS-749, OS-750, OS-751, OS-752, OS-753, OS-754, OS-755, OS-756, OS-757, OS-758, OS-759, OS-760, OS-761, OS-762, OS-763, OS-764, OS-765, OS-766, OS-767, OS-768, OS-769, OS-770, OS-771, OS-772, OS-773, OS-774, OS-775, OS-776, OS-777, OS-778, OS-779, OS-780, OS-781, OS-782, OS-783, OS-784, OS-785, OS-786, OS-787, OS-788, OS-789, OS-790, OS-791, OS-792, OS-793, OS-794, OS-795, OS-796, OS-797, OS-798, OS-799, OS-800, OS-801, OS-802, OS-803, OS-804, OS-805, OS-806, OS-807, OS-808, OS-809, OS-810, OS-811, OS-812, OS-813, OS-814, OS-815, OS-816, OS-817, OS-818, OS-819, OS-820, OS-821, OS-822, OS-823, OS-824, OS-825, OS-826, OS-827, OS-828, OS-829, OS-830, OS-831, OS-832, OS-833, OS-834, OS-835, OS-836, OS-837, OS-838, OS-839, OS-840, OS-841, OS-842, OS-843, OS-844, OS-845, OS-846, OS-847, OS-848, OS-849, OS-850, OS-851, OS-852, OS-853, OS-854, OS-855, OS-856, OS-857, OS-858, OS-859, OS-860, OS-861, OS-862, OS-863, OS-864, OS-865, OS-866, OS-867, OS-868, OS-869, OS-870, OS-871, OS-872, OS-873, OS-874, OS-875, OS-876, OS-877, OS-878, OS-879, OS-880, OS-881, OS-882, OS-883, OS-884, OS-885, OS-886, OS-887, OS-888, OS-889, OS-890, OS-891, OS-892, OS-893, OS-894, OS-895, OS-896, OS-897, OS-898, OS-899, OS-900, OS-901, OS-902, OS-903, OS-904, OS-905, OS-906, OS-907, OS-908, OS-909, OS-910, OS-911, OS-912, OS-913, OS-914, OS-915, OS-916, OS-917, OS-918, OS-919, OS-920, OS-921, OS-922, OS-923, OS-924, OS-925, OS-926, OS-927, OS-928, OS-929, OS-930, OS-931, OS-932, OS-933, OS-934, OS-935, OS-936, OS-937, OS-938, OS-939, OS-940, OS-941, OS-942, OS-943, OS-944, OS-945, OS-946, OS-947, OS-948, OS-949, OS-950, OS-951, OS-952, OS-953, OS-954, OS-955, OS-956, OS-957, OS-958, OS-959, OS-960, OS-961, OS-962, OS-963, OS-964, OS-965, OS-966, OS-967, OS-968, OS-969, OS-970, OS-971, OS-972, OS-973, OS-974, OS-975, OS-976, OS-977, OS-978, OS-979, OS-980, OS-981, OS-982, OS-983, OS-984, OS-985, OS-986, OS-987, OS-988, OS-989, OS-990, OS-991, OS-992, OS-993, OS-994, OS-995, OS-996, OS-997, OS-998, OS-999, OS-1000, OS-1001, OS-1002, OS-1003, OS-1004, OS-1005, OS-1006, OS-1007, OS-1008, OS-1009, OS-1010, OS-1011, OS-1012, OS-1013, OS-1014, OS-1015, OS-1016, OS-1017, OS-1018, OS-1019, OS-1020, OS-1021, OS-1022, OS-1023, OS-1024, OS-1025, OS-1026, OS-1027, OS-1028, OS-1029, OS-1030, OS-1031, OS-1032, OS-1033, OS-1034, OS-1035, OS-1036, OS-1037, OS-1038, OS-1039, OS-1040, OS-1041, OS-1042, OS-1043, OS-1044, OS-1045, OS-1046, OS-1047, OS-1048, OS-1049, OS-1050, OS-1051, OS-1052, OS-1053, OS-1054, OS-1055, OS-1056, OS-1057, OS-1058, OS-1059, OS-1060, OS-1061, OS-1062, OS-1063, OS-1064, OS-1065, OS-1066, OS-1067, OS-1068, OS-1069, OS-1070, OS-1071, OS-1072, OS-1073, OS-1074, OS-1075, OS-1076, OS-1077, OS-1078, OS-1079, OS-1080, OS-1081, OS-1082, OS-1083, OS-1084, OS-1085, OS-1086, OS-1087, OS-1088, OS-1089, OS-1090, OS-1091, OS-1092, OS-1093, OS-1094, OS-1095, OS-1096, OS-1097, OS-1098, OS-1099, OS-1100, OS-1101, OS-1102, OS-1103, OS-1104, OS-1105, OS-1106, OS-1107, OS-1108, OS-1109, OS-1110, OS-1111, OS-1112, OS-1113, OS-1114, OS-1115, OS-1116, OS-1117, OS-1118, OS-1119, OS-1120, OS-1121, OS-1122, OS-1123, OS-1124, OS-1125, OS-1126, OS-1127, OS-1128, OS-1129, OS-1130, OS-1131, OS-1132, OS-1133, OS-1134, OS-1135, OS-1136, OS-1137, OS-1138, OS-1139, OS-1140, OS-1141, OS-1142, OS-1143, OS-1144, OS-1145, OS-1146, OS-1147, OS-1148, OS-1149, OS-1150, OS-1151, OS-1152, OS-1153, OS-1154, OS-1155, OS-1156, OS-1157, OS-1158, OS-1159, OS-1160, OS-1161, OS-1162, OS-1163, OS-1164, OS-1165, OS-1166, OS-1167, OS-1168, OS-1169, OS-1170, OS-1171, OS-1172, OS-1173, OS-1174, OS-1175, OS-1176, OS-1177, OS-1178, OS-1179, OS-1180, OS-1181, OS-1182, OS-1183, OS-1184, OS-1185, OS-1186, OS-1187, OS-1188, OS-1189, OS-1190, OS-1191, OS-1192, OS-1193, OS-1194, OS-1195, OS-1196, OS-1197, OS-1198, OS-1199, OS-1200, OS-1201, OS-1202, OS-1203, OS-1204, OS-1205, OS-1206, OS-1207, OS-1208, OS-1209, OS-1210, OS-1211, OS-1212, OS-1213, OS-1214, OS-1215, OS-1216, OS-1217, OS-1218, OS-1219, OS-1220, OS-1221, OS-1222, OS-1223, OS-1224, OS-1225, OS-1226, OS-1227, OS-1228, OS-1229, OS-1230, OS-1231, OS-1232, OS-1233, OS-1234, OS-1235, OS-1236, OS-1237, OS-1238, OS-1239, OS-1240, OS-1241, OS-1242, OS-1243, OS-1244, OS-1245, OS-1246, OS-1247, OS-1248, OS-1249, OS-1250, OS-1251, OS-1252, OS-1253, OS-1254, OS-1255, OS-1256, OS-1257, OS-1258, OS-1259, OS-1260, OS-1261, OS-1262, OS-1263, OS-1264, OS-1265, OS-1266, OS-1267, OS-1268, OS-1269, OS-1270, OS-1271, OS-1272, OS-1273, OS-1274, OS-1275, OS-1276, OS-1277, OS-1278, OS-1279, OS-1280, OS-1281, OS-1282, OS-1283, OS-1284, OS-1285, OS-1286, OS-1287, OS-1288, OS-1289, OS-1290, OS-1291, OS-1292, OS-1293, OS-1294, OS-1295, OS-1296, OS-1297, OS-1298, OS-1299, OS-1300, OS-1301, OS-1302, OS-1303, OS-1304, OS-1305, OS-1306, OS-1307, OS-1308, OS-1309, OS-1310, OS-1311, OS-1312, OS-1313, OS-1314, OS-1315, OS-1316, OS-1317, OS-1318, OS-1319, OS-1320, OS-1321, OS-1322, OS-1323, OS-1324, OS-1325, OS-1326, OS-1327, OS-1328, OS-1329, OS-1330, OS-1331, OS-1332, OS-1333, OS-1334, OS-1335, OS-1336, OS-1337, OS-1338, OS-1339, OS-1340, OS-1341, OS-1342, OS-1343, OS-1344, OS-1345, OS-1346, OS-1347, OS-1348, OS-1349, OS-1350, OS-1351, OS-1352, OS-1353, OS-1354, OS-1355, OS-1356, OS-1357, OS-1358, OS-1359, OS-1360, OS-1361, OS-1362, OS-1363, OS-1364, OS-1365, OS-1366, OS-1367, OS-1368, OS-1369, OS-1370, OS-1371, OS-1372, OS-1373, OS-1374, OS-1375, OS-1376, OS-1377, OS-1378, OS-1379, OS-1380, OS-1381, OS-1382, OS-1383, OS-1384, OS-1385, OS-1386, OS-1387, OS-1388, OS-1389, OS-1390, OS-1391, OS-1392, OS-1393, OS-1394, OS-1395, OS-1396, OS-1397, OS-1398, OS-1399, OS-1400, OS-1401, OS-1402, OS-1403, OS-1404, OS-1405, OS-1406, OS-1407, OS-1408, OS-1409, OS-1410, OS-1411, OS-1412, OS-1413, OS-1414, OS-1415, OS-1416, OS-1417, OS-1418, OS-1419, OS-1420, OS-1421, OS-1422, OS-1423, OS-1424, OS-1425, OS-1426, OS-1427, OS-1428, OS-1429, OS-1430, OS-1431, OS-1432, OS-1433, OS-1434, OS-1435, OS-1436, OS-1437, OS-1438, OS-1439, OS-1440, OS-1441, OS-1442, OS-1443, OS-1444, OS-1445, OS-1446, OS-1447, OS-1448, OS-1449, OS

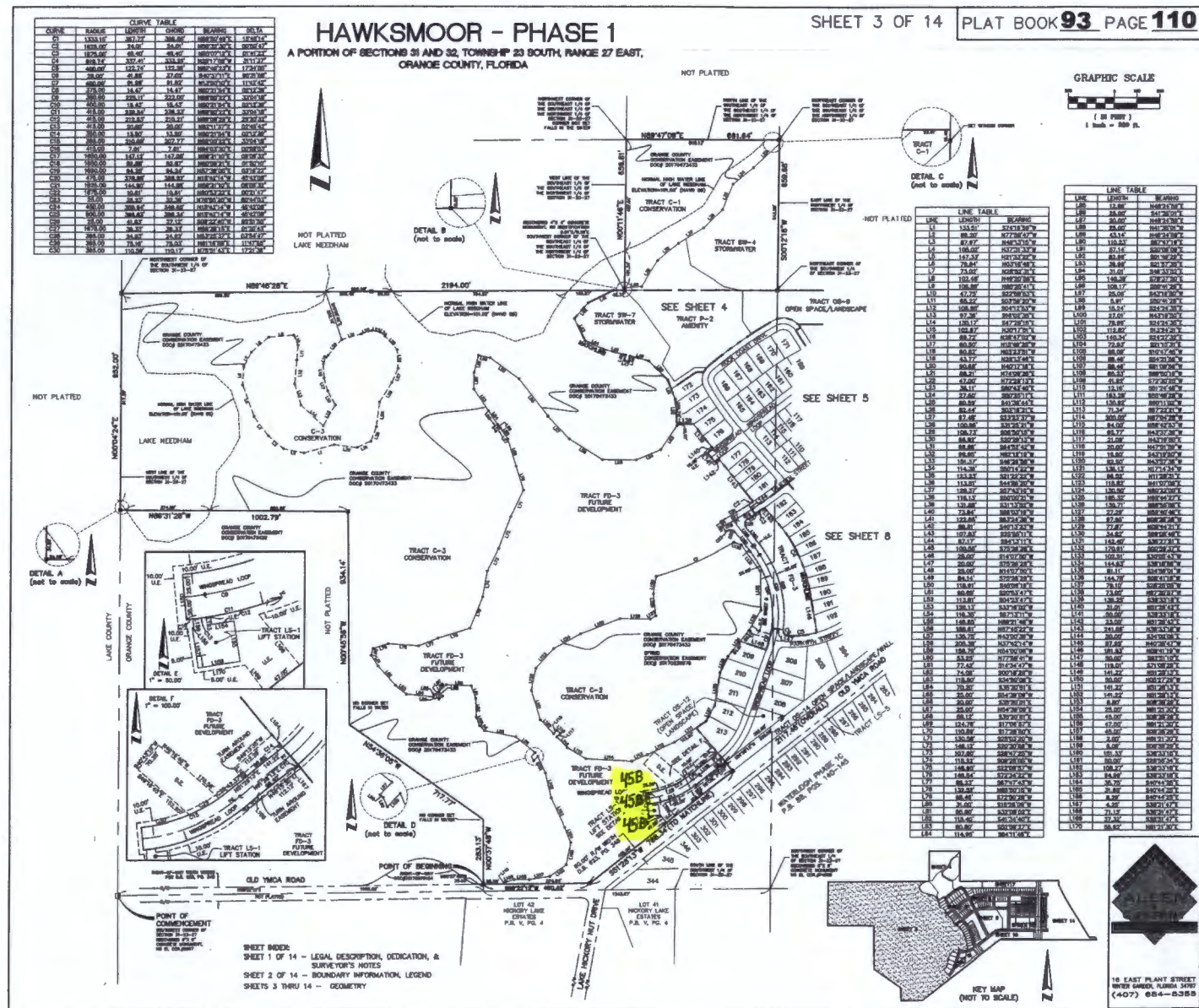
HAWKSMOOR - PHASE 1

A PORTION OF SECTIONS 31 AND 32, TOWNSHIP 23 SOUTH, RANGE 27 EAST,
ORANGE COUNTY, FLORIDA

SHEET 2 OF 14

PLAT BOOK **93** PAGE **109**

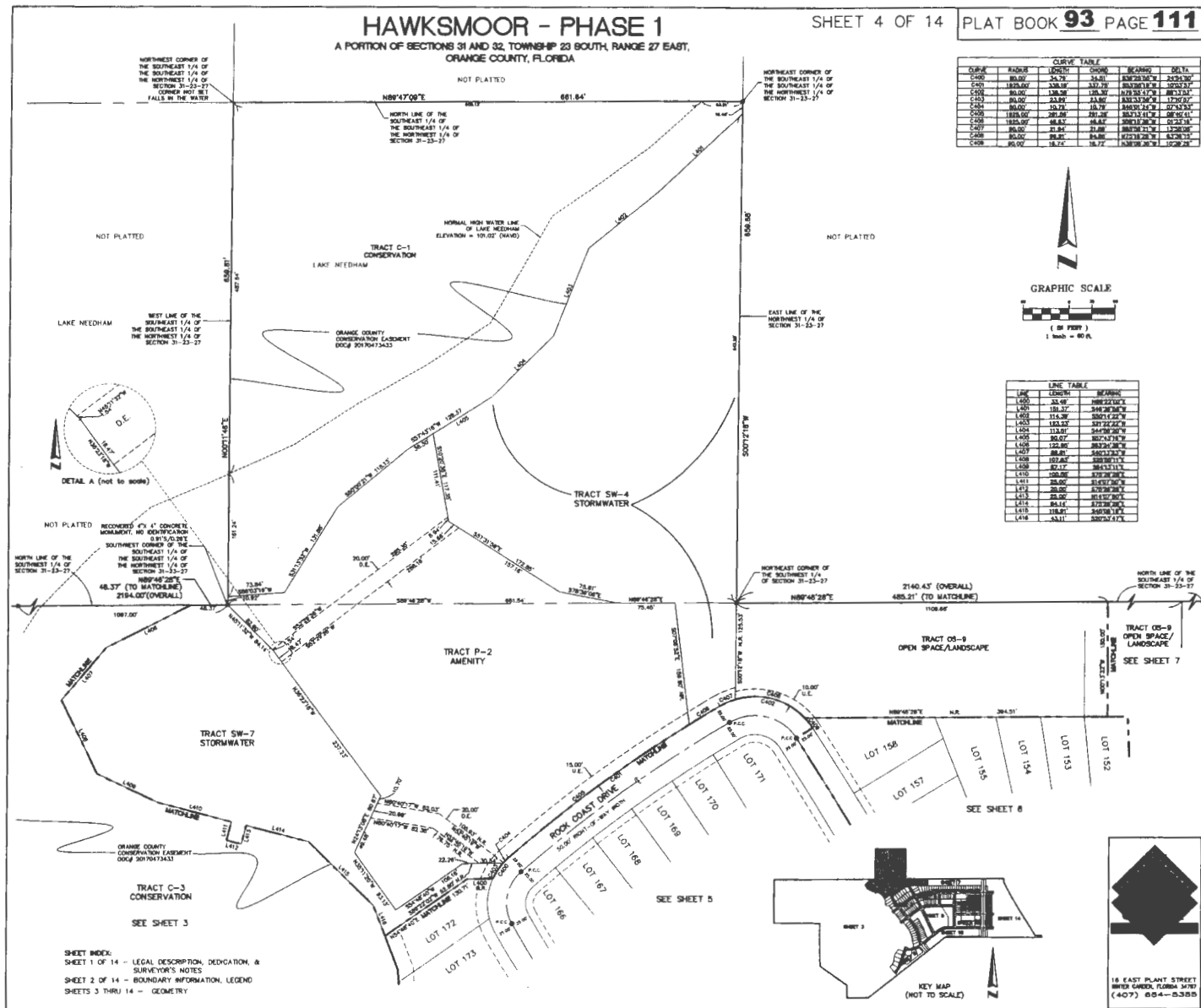
CURVE TABLE				
CURVE	RAISES	THROWS	REWORKS	DELTA
C1	133.01	133.01	133.01	0.00
C2	133.00	24.00	133.00	0.00
C3	137.00	48.00	137.00	0.00
C4	137.00	96.00	137.00	0.00
C5	140.00	122.74	140.00	0.00
C6	140.00	144.00	140.00	0.00
C7	143.00	168.00	143.00	0.00
C8	143.00	192.00	143.00	0.00
C9	145.00	216.00	145.00	0.00
C10	145.00	240.00	145.00	0.00
C11	146.00	264.00	146.00	0.00
C12	146.00	288.00	146.00	0.00
C13	147.00	312.00	147.00	0.00
C14	147.00	336.00	147.00	0.00
C15	148.00	360.00	148.00	0.00
C16	148.00	384.00	148.00	0.00
C17	149.00	408.00	149.00	0.00
C18	149.00	432.00	149.00	0.00
C19	150.00	456.00	150.00	0.00
C20	150.00	480.00	150.00	0.00
C21	151.00	504.00	151.00	0.00
C22	151.00	528.00	151.00	0.00
C23	152.00	552.00	152.00	0.00
C24	152.00	576.00	152.00	0.00
C25	153.00	600.00	153.00	0.00
C26	153.00	624.00	153.00	0.00
C27	154.00	648.00	154.00	0.00
C28	154.00	672.00	154.00	0.00
C29	155.00	696.00	155.00	0.00
C30	155.00	720.00	155.00	0.00
C31	156.00	744.00	156.00	0.00
C32	156.00	768.00	156.00	0.00
C33	157.00	792.00	157.00	0.00
C34	157.00	816.00	157.00	0.00
C35	158.00	840.00	158.00	0.00
C36	158.00	864.00	158.00	0.00
C37	159.00	888.00	159.00	0.00
C38	159.00	912.00	159.00	0.00
C39	160.00	936.00	160.00	0.00
C40	160.00	960.00	160.00	0.00
C41	161.00	984.00	161.00	0.00
C42	161.00	1008.00	161.00	0.00
C43	162.00	1032.00	162.00	0.00
C44	162.00	1056.00	162.00	0.00
C45	163.00	1080.00	163.00	0.00
C46	163.00	1104.00	163.00	0.00
C47	164.00	1128.00	164.00	0.00
C48	164.00	1152.00	164.00	0.00
C49	165.00	1176.00	165.00	0.00
C50	165.00	1200.00	165.00	0.00



HAWKSMOOR - PHASE 1

A PORTION OF SECTIONS 31 AND 32, TOWNSHIP 23 SOUTH, RANGE 27 EAST,
ORANGE COUNTY, FLORIDA

SHEET 4 OF 14

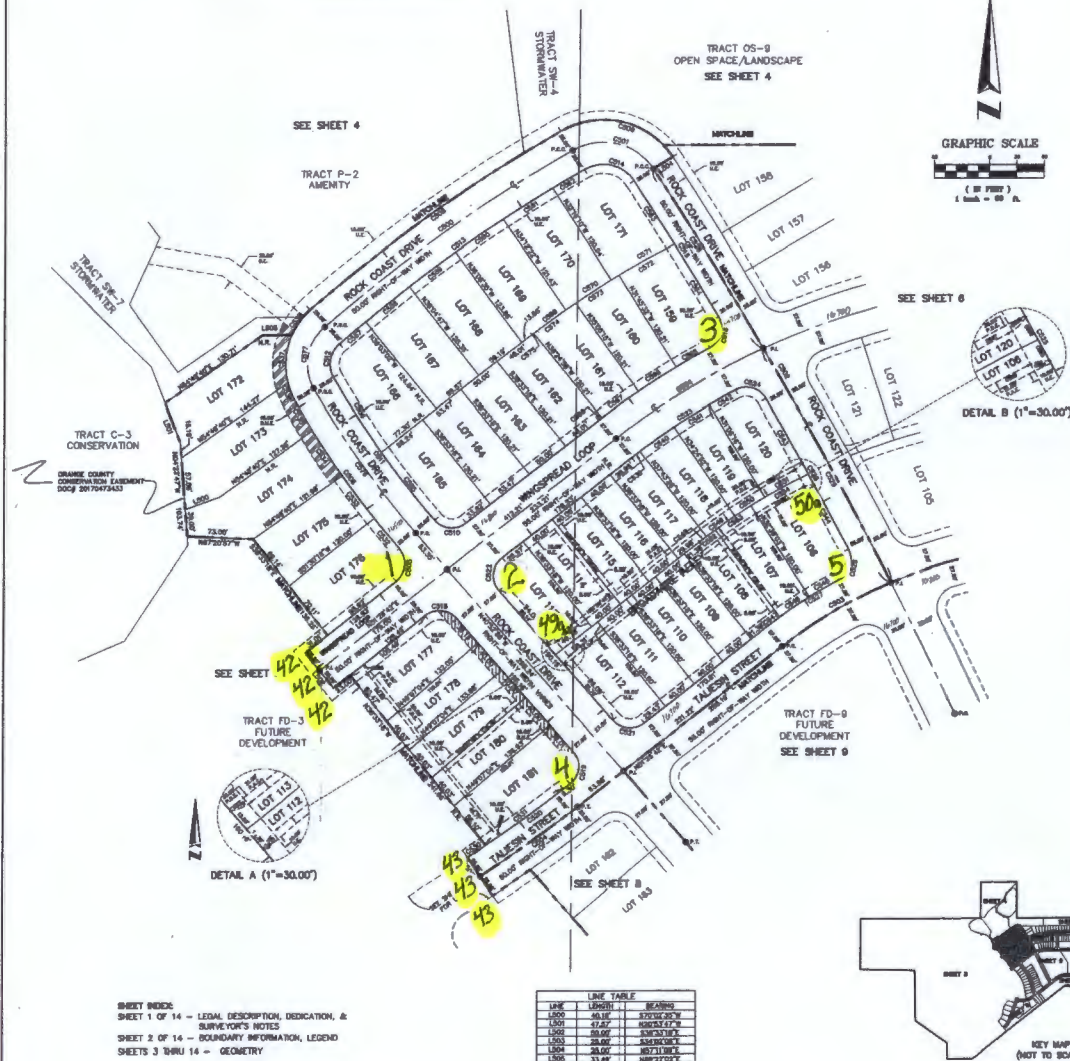
PLAT BOOK **93** PAGE **111**

HAWKSMOOR - PHASE 1

A PORTION OF SECTIONS 31 AND 32 TOWNSHIP 23 SOUTH, RANGE 27 EAST,
ORANGE COUNTY, FLORIDA

SHEET 5 OF 14

PLAT BOOK **93** PAGE **112**



SHEET 5 OF 14 - LEGAL DESCRIPTION, DEDICATION, &
SURVEYOR'S NOTES
SHEET 2 OF 14 - BOUNDARY INFORMATION, LEGEND
SHEETS 3 THRU 14 - GEOMETRY

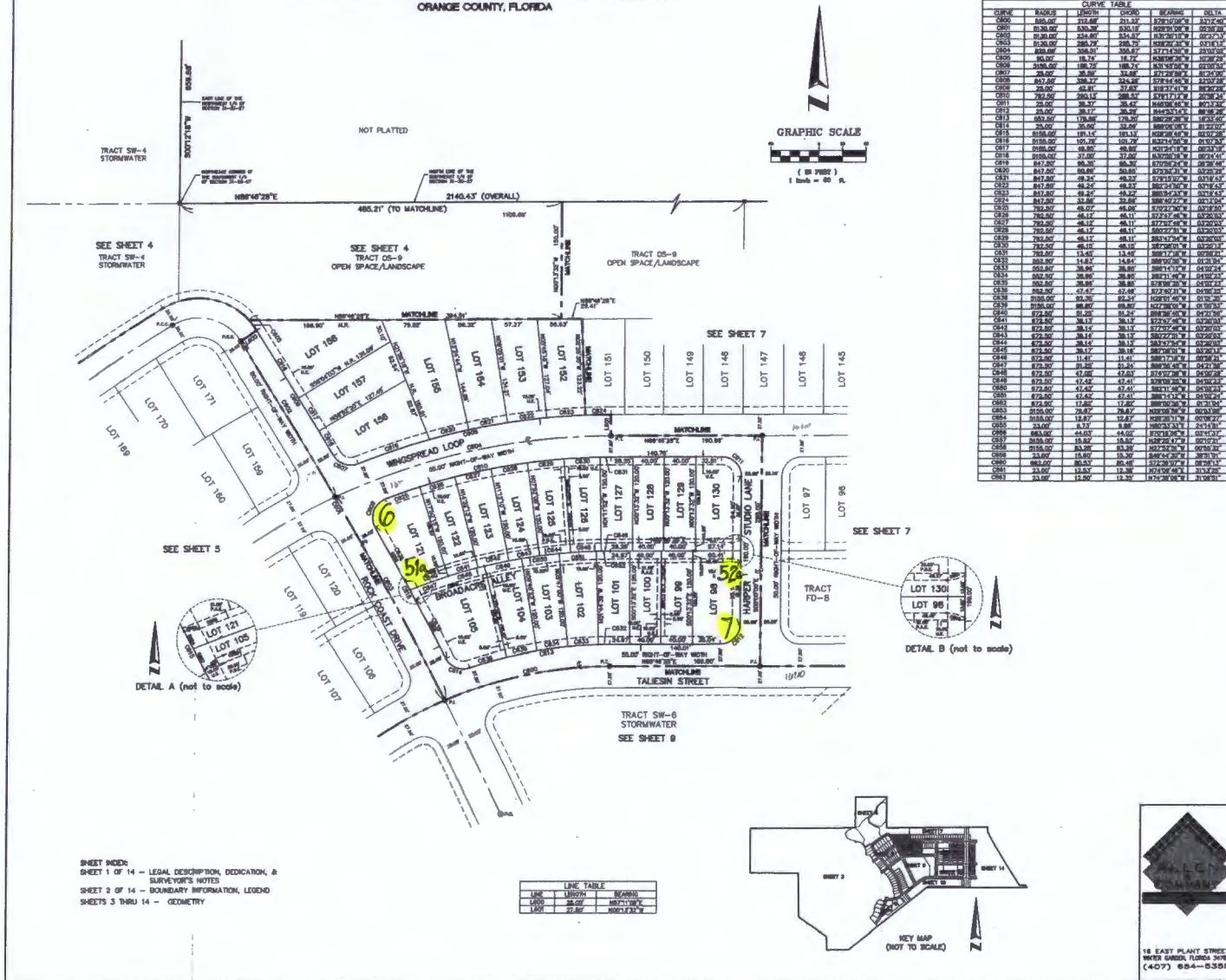
LINE	LEGEND	MEASUREMENT
1000	40.00'	370.00' 30.00'
1001	41.00'	380.00' 31.00'
1002	42.00'	390.00' 32.00'
1003	43.00'	400.00' 33.00'
1004	44.00'	410.00' 34.00'
1005	45.00'	420.00' 35.00'

CURVE	RANGE	LENGTH	CHORD	BEARING	AREA
C001	100.00'	100.00'	100.00'	90.00° 00' 00"	7853.98
C002	100.00'	100.00'	100.00'	90.00° 00' 00"	7853.98
C003	100.00'	100.00'	100.00'	90.00° 00' 00"	7853.98
C004	100.00'	100.00'	100.00'	90.00° 00' 00"	7853.98
C005	100.00'	100.00'	100.00'	90.00° 00' 00"	7853.98
C006	100.00'	100.00'	100.00'	90.00° 00' 00"	7853.98
C007	100.00'	100.00'	100.00'	90.00° 00' 00"	7853.98
C008	100.00'	100.00'	100.00'	90.00° 00' 00"	7853.98
C009	100.00'	100.00'	100.00'	90.00° 00' 00"	7853.98
C010	100.00'	100.00'	100.00'	90.00° 00' 00"	7853.98
C011	100.00'	100.00'	100.00'	90.00° 00' 00"	7853.98
C012	100.00'	100.00'	100.00'	90.00° 00' 00"	7853.98
C013	100.00'	100.00'	100.00'	90.00° 00' 00"	7853.98
C014	100.00'	100.00'	100.00'	90.00° 00' 00"	7853.98
C015	100.00'	100.00'	100.00'	90.00° 00' 00"	7853.98
C016	100.00'	100.00'	100.00'	90.00° 00' 00"	7853.98
C017	100.00'	100.00'	100.00'	90.00° 00' 00"	7853.98
C018	100.00'	100.00'	100.00'	90.00° 00' 00"	7853.98
C019	100.00'	100.00'	100.00'	90.00° 00' 00"	7853.98
C020	100.00'	100.00'	100.00'	90.00° 00' 00"	7853.98
C021	100.00'	100.00'	100.00'	90.00° 00' 00"	7853.98
C022	100.00'	100.00'	100.00'	90.00° 00' 00"	7853.98
C023	100.00'	100.00'	100.00'	90.00° 00' 00"	7853.98
C024	100.00'	100.00'	100.00'	90.00° 00' 00"	7853.98
C025	100.00'	100.00'	100.00'	90.00° 00' 00"	7853.98
C026	100.00'	100.00'	100.00'	90.00° 00' 00"	7853.98
C027	100.00'	100.00'	100.00'	90.00° 00' 00"	7853.98
C028	100.00'	100.00'	100.00'	90.00° 00' 00"	7853.98
C029	100.00'	100.00'	100.00'	90.00° 00' 00"	7853.98
C030	100.00'	100.00'	100.00'	90.00° 00' 00"	7853.98
C031	100.00'	100.00'	100.00'	90.00° 00' 00"	7853.98
C032	100.00'	100.00'	100.00'	90.00° 00' 00"	7853.98
C033	100.00'	100.00'	100.00'	90.00° 00' 00"	7853.98
C034	100.00'	100.00'	100.00'	90.00° 00' 00"	7853.98
C035	100.00'	100.00'	100.00'	90.00° 00' 00"	7853.98
C036	100.00'	100.00'	100.00'	90.00° 00' 00"	7853.98
C037	100.00'	100.00'	100.00'	90.00° 00' 00"	7853.98
C038	100.00'	100.00'	100.00'	90.00° 00' 00"	7853.98
C039	100.00'	100.00'	100.00'	90.00° 00' 00"	7853.98
C040	100.00'	100.00'	100.00'	90.00° 00' 00"	7853.98
C041	100.00'	100.00'	100.00'	90.00° 00' 00"	7853.98
C042	100.00'	100.00'	100.00'	90.00° 00' 00"	7853.98
C043	100.00'	100.00'	100.00'	90.00° 00' 00"	7853.98
C044	100.00'	100.00'	100.00'	90.00° 00' 00"	7853.98
C045	100.00'	100.00'	100.00'	90.00° 00' 00"	7853.98
C046	100.00'	100.00'	100.00'	90.00° 00' 00"	7853.98
C047	100.00'	100.00'	100.00'	90.00° 00' 00"	7853.98
C048	100.00'	100.00'	100.00'	90.00° 00' 00"	7853.98
C049	100.00'	100.00'	100.00'	90.00° 00' 00"	7853.98
C050	100.00'	100.00'	100.00'	90.00° 00' 00"	7853.98
C051	100.00'	100.00'	100.00'	90.00° 00' 00"	7853.98
C052	100.00'	100.00'	100.00'	90.00° 00' 00"	7853.98
C053	100.00'	100.00'	100.00'	90.00° 00' 00"	7853.98
C054	100.00'	100.00'	100.00'	90.00° 00' 00"	7853.98
C055	100.00'	100.00'	100.00'	90.00° 00' 00"	7853.98
C056	100.00'	100.00'	100.00'	90.00° 00' 00"	7853.98
C057	100.00'	100.00'	100.00'	90.00° 00' 00"	7853.98
C058	100.00'	100.00'	100.00'	90.00° 00' 00"	7853.98
C059	100.00'	100.00'	100.00'	90.00° 00' 00"	7853.98
C060	100.00'	100.00'	100.00'	90.00° 00' 00"	7853.98
C061	100.00'	100.00'	100.00'	90.00° 00' 00"	7853.98
C062	100.00'	100.00'	100.00'	90.00° 00' 00"	7853.98
C063	100.00'	100.00'	100.00'	90.00° 00' 00"	7853.98
C064	100.00'	100.00'	100.00'	90.00° 00' 00"	7853.98
C065	100.00'	100.00'	100.00'	90.00° 00' 00"	7853.98
C066	100.00'	100.00'	100.00'	90.00° 00' 00"	7853.98
C067	100.00'	100.00'	100.00'	90.00° 00' 00"	7853.98
C068	100.00'	100.00'	100.00'	90.00° 00' 00"	7853.98
C069	100.00'	100.00'	100.00'	90.00° 00' 00"	7853.98
C070	100.00'	100.00'	100.00'	90.00° 00' 00"	7853.98
C071	100.00'	100.00'	100.00'	90.00° 00' 00"	7853.98
C072	100.00'	100.00'	100.00'	90.00° 00' 00"	7853.98
C073	100.00'	100.00'	100.00'	90.00° 00' 00"	7853.98
C074	100.00'	100.00'	100.00'	90.00° 00' 00"	7853.98
C075	100.00'	100.00'	100.00'	90.00° 00' 00"	7853.98
C076	100.00'	100.00'	100.00'	90.00° 00' 00"	7853.98
C077	100.00'	100.00'	100.00'	90.00° 00' 00"	7853.98
C078	100.00'	100.00'	100.00'	90.00° 00' 00"	7853.98
C079	100.00'	100.00'	100.00'	90.00° 00' 00"	7853.98
C080	100.00'	100.00'	100.00'	90.00° 00' 00"	7853.98
C081	100.00'	100.00'	100.00'	90.00° 00' 00"	7853.98
C082	100.00'	100.00'	100.00'	90.00° 00' 00"	7853.98
C083	100.00'	100.00'	100.00'	90.00° 00' 00"	7853.98
C084	100.00'	100.00'	100.00'	90.00° 00' 00"	7853.98
C085	100.00'	100.00'	100.00'	90.00° 00' 00"	7853.98
C086	100.00'	100.00'	100.00'	90.00° 00' 00"	7853.98
C087	100.00'	100.00'	100.00'	90.00° 00' 00"	7853.98
C088	100.00'	100.00'	100.00'	90.00° 00' 00"	7853.98
C089	100.00'	100.00'	100.00'	90.00° 00' 00"	7853.98
C090	100.00'	100.00'	100.00'	90.00° 00' 00"	7853.98
C091	100.00'	100.00'	100.00'	90.00° 00' 00"	7853.98
C092	100.00'	100.00'	100.00'	90.00° 00' 00"	7853.98
C093	100.00'	100.00'	100.00'	90.00° 00' 00"	7853.98
C094	100.00'	100.00'	100.00'	90.00° 00' 00"	7853.98
C095	100.00'	100.00'	100.00'	90.00° 00' 00"	7853.98
C096	100.00'	100.00'	100.00'	90.00° 00' 00"	7853.98
C097	100.00'	100.00'	100.00'	90.00° 00' 00"	7853.98
C098	100.00'	100.00'	100.00'	90.00° 00' 00"	7853.98
C099	100.00'	100.00'	100.00'	90.00° 00' 00"	7853.98
C100	100.00'	100.00'	100.00'	90.00° 00' 00"	7853.98

18 EAST PLANT STREET
ORANGE, FLORIDA 32667
(407) 864-8358

HAWKSMOOR - PHASE 1 A PORTION OF SECTIONS 31 AND 32, TOWNSHIP 23 SOUTH, RANGE 27 EAST, ORANGE COUNTY, FLORIDA

SHEET 6 OF 14

PLAT BOOK **93** PAGE **113**

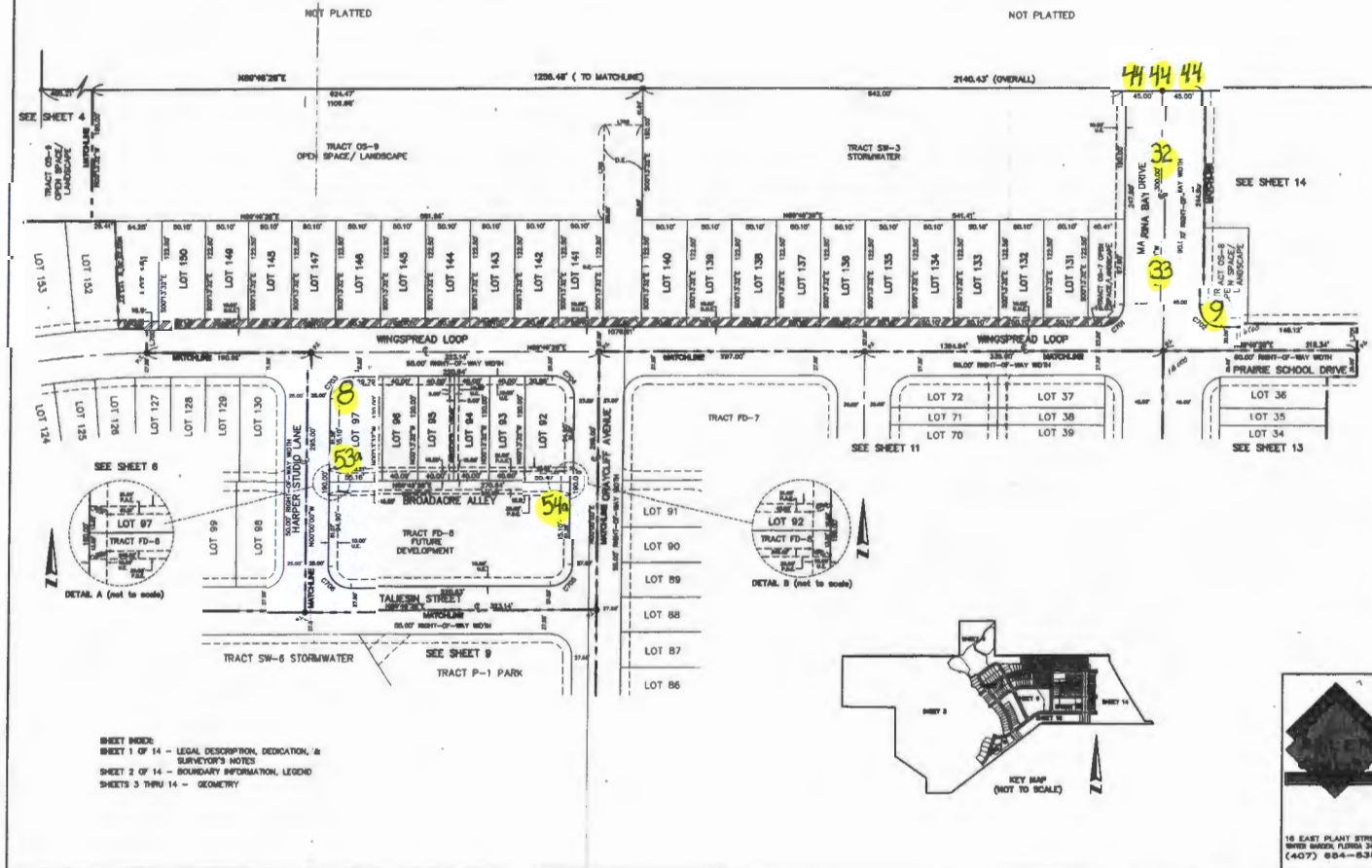
HAWKSMOOR - PHASE 1

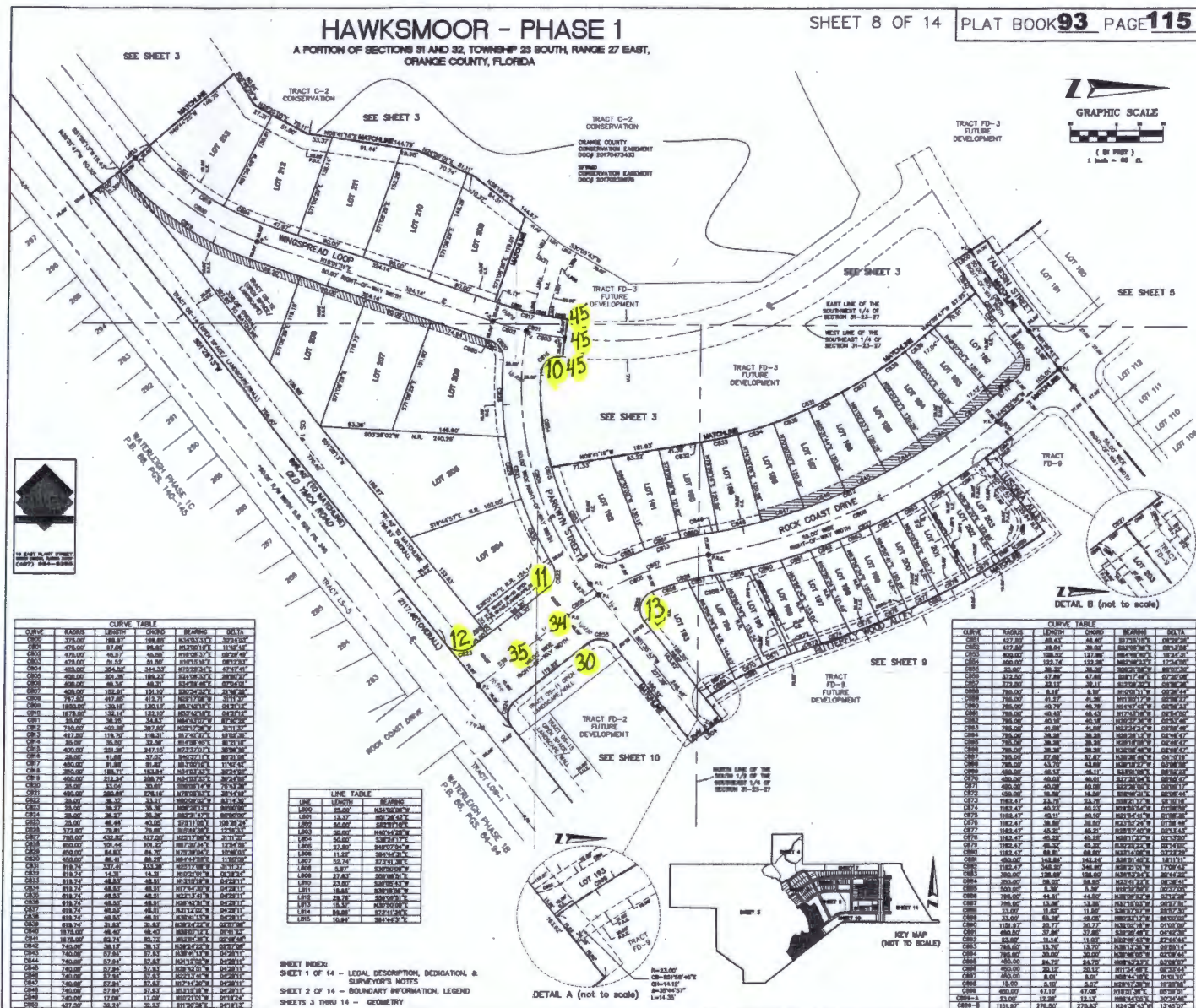
A PORTION OF SECTIONS 31 AND 32, TOWNSHIP 23 SOUTH, RANGE 27 EAST,
ORANGE COUNTY, FLORIDA

SHEET 7 OF 14 PLAT BOOK **93** PAGE **114**

CURVE	RADIUS	CHORD	CHORD BEARING	DELTA
C100	50.00	10.00	S89°27'39" W	90°00'00"
C101	50.00	10.00	S89°27'39" W	90°00'00"
C102	50.00	10.00	S89°27'39" W	90°00'00"
C103	50.00	10.00	S89°27'39" W	90°00'00"
C104	50.00	10.00	S89°27'39" W	90°00'00"
C105	50.00	10.00	S89°27'39" W	90°00'00"
C106	50.00	10.00	S89°27'39" W	90°00'00"
C107	50.00	10.00	S89°27'39" W	90°00'00"
C108	50.00	10.00	S89°27'39" W	90°00'00"
C109	50.00	10.00	S89°27'39" W	90°00'00"
C110	50.00	10.00	S89°27'39" W	90°00'00"

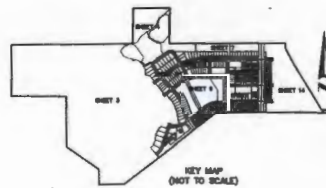
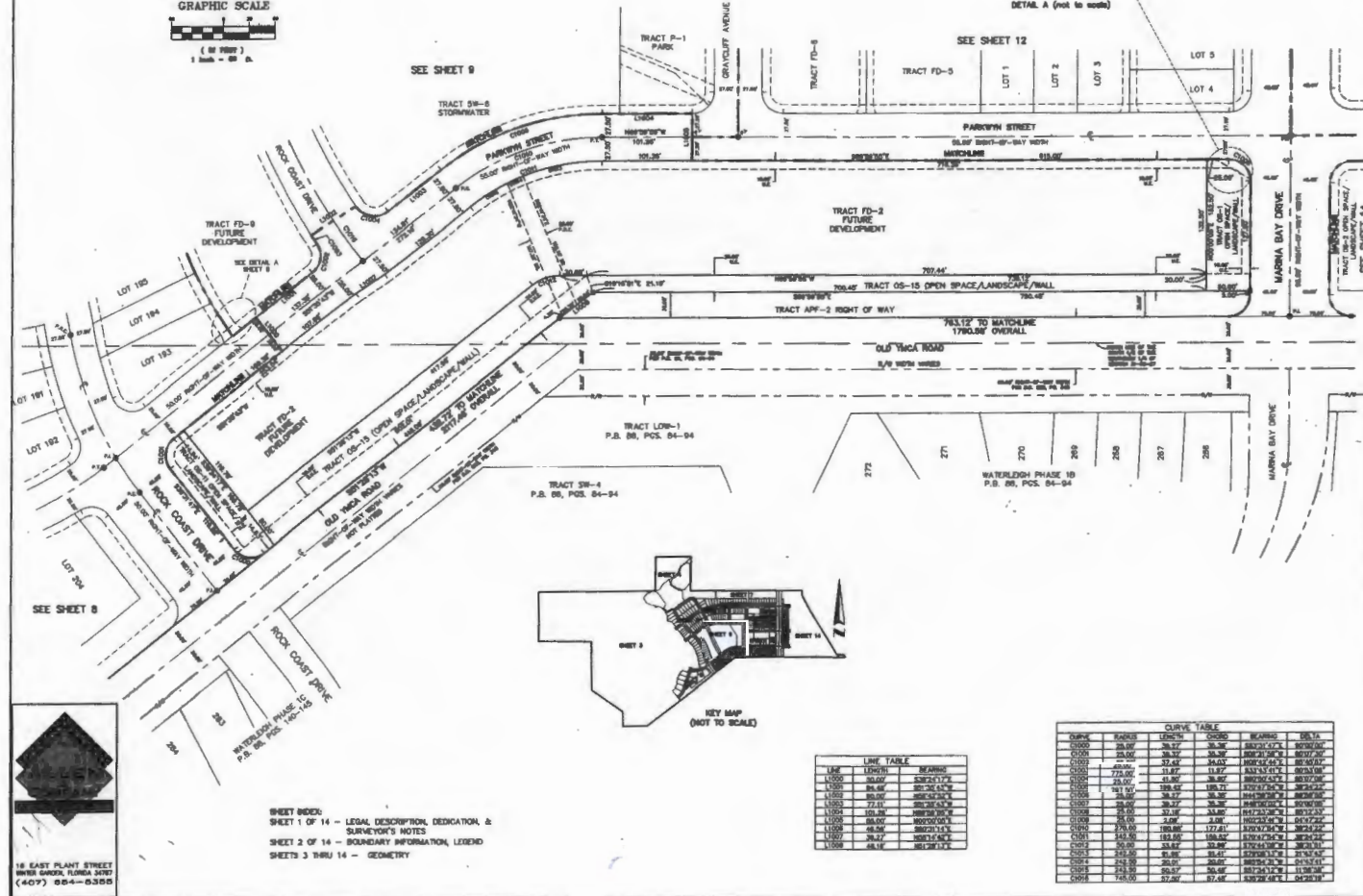
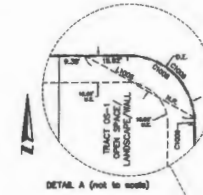
LINE	LENGTH	BEARING
L100	10.00	S89°27'39" W
L101	10.00	S89°27'39" W
L102	10.00	S89°27'39" W
L103	10.00	S89°27'39" W





HAWKSMOOR - PHASE 1 A PORTION OF SECTIONS 31 AND 32, TOWNSHIP 23 SOUTH, RANGE 27 EAST, ORANGE COUNTY, FLORIDA

SHEET 10 OF 14 PLAT BOOK **93** PAGE **117**



LINE TABLE

LINE	LENGTH	BEARING
L1000	88.00	S82°11'11"E
L1001	88.00	S82°11'11"E
L1002	88.00	S82°11'11"E
L1003	88.00	S82°11'11"E
L1004	88.00	S82°11'11"E
L1005	88.00	S82°11'11"E
L1006	88.00	S82°11'11"E
L1007	88.00	S82°11'11"E
L1008	88.00	S82°11'11"E

CURVE TABLE

CHORD	RADIUS	LENGTH	CHORD	BEARING	DELTA
C1000	38.87	38.87	38.87	S82°11'11"E	89°48'48"
C1001	38.87	38.87	38.87	S82°11'11"E	89°48'48"
C1002	38.87	38.87	38.87	S82°11'11"E	89°48'48"
C1003	38.87	38.87	38.87	S82°11'11"E	89°48'48"
C1004	38.87	38.87	38.87	S82°11'11"E	89°48'48"
C1005	38.87	38.87	38.87	S82°11'11"E	89°48'48"
C1006	38.87	38.87	38.87	S82°11'11"E	89°48'48"
C1007	38.87	38.87	38.87	S82°11'11"E	89°48'48"
C1008	38.87	38.87	38.87	S82°11'11"E	89°48'48"

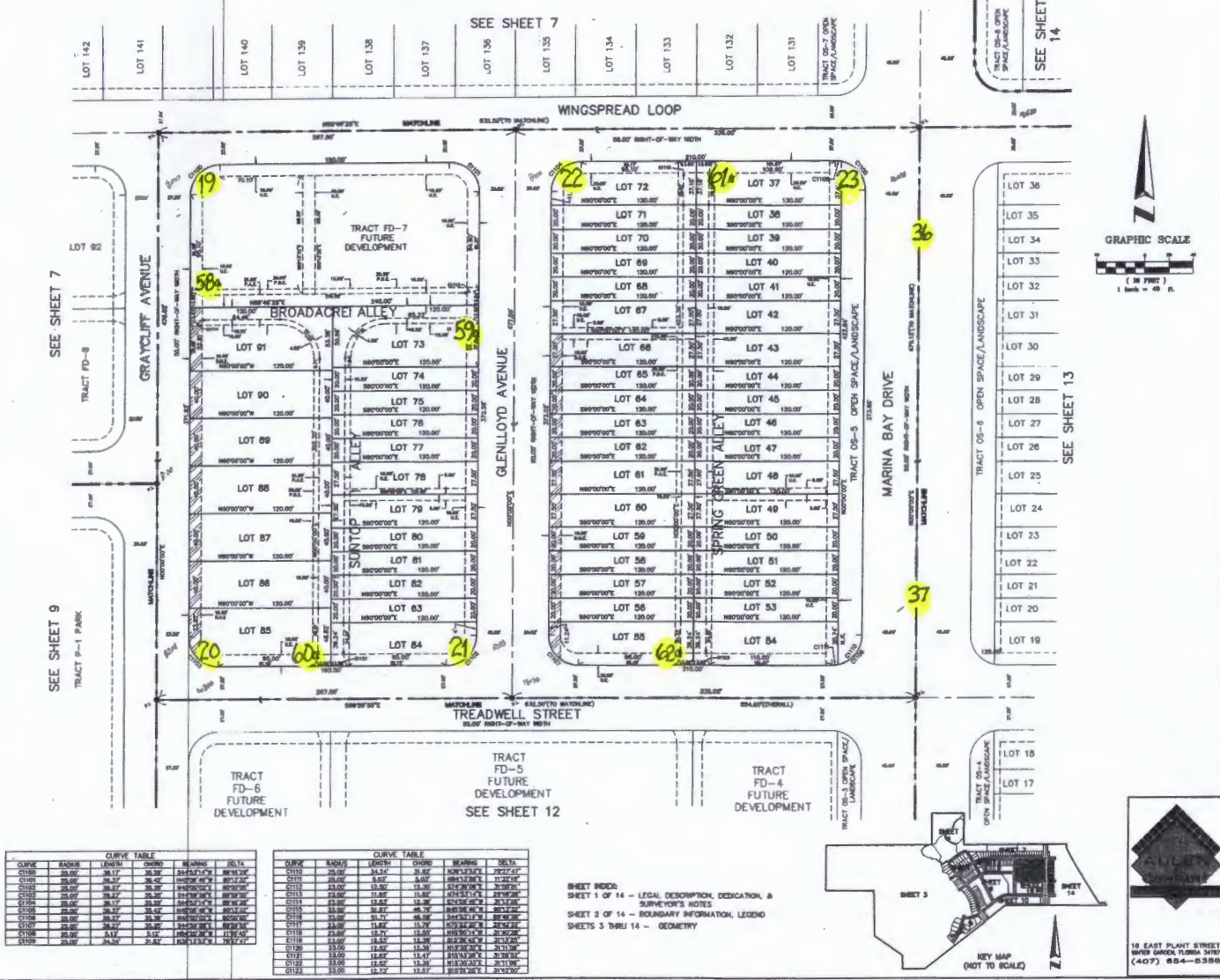
SHEET INDEX:
SHEET 1 OF 14 - LEGAL DESCRIPTION, DEDICATION &
SURVEYOR'S NOTES
SHEET 2 OF 14 - BOUNDARY INFORMATION, LEGEND
SHEETS 3 THRU 14 - GEOMETRY

18 EAST PLANT STREET
ORANGE, FLORIDA 32667
(407) 884-0380

HAWKSMOOR-PHASE 1

A PORTION OF SECTIONS 31 AND 32, TOWNSHIP 23 SOUTH, RANGE 27 EAST,
ORANGE COUNTY, FLORIDA

SHEET 11 OF 14 PLAT BOOK **93** PAGE **118**



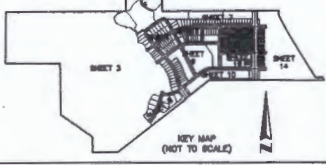
CURVE TABLE

CHORD	BEARING	CHORD	BEARING	DELTA
10.00	S 89.17° E	10.00	S 89.17° E	89.17°
10.00	S 89.17° E	10.00	S 89.17° E	89.17°
10.00	S 89.17° E	10.00	S 89.17° E	89.17°
10.00	S 89.17° E	10.00	S 89.17° E	89.17°
10.00	S 89.17° E	10.00	S 89.17° E	89.17°
10.00	S 89.17° E	10.00	S 89.17° E	89.17°
10.00	S 89.17° E	10.00	S 89.17° E	89.17°
10.00	S 89.17° E	10.00	S 89.17° E	89.17°
10.00	S 89.17° E	10.00	S 89.17° E	89.17°
10.00	S 89.17° E	10.00	S 89.17° E	89.17°

CURVE TABLE

CHORD	BEARING	CHORD	BEARING	DELTA
10.00	S 89.17° E	10.00	S 89.17° E	89.17°
10.00	S 89.17° E	10.00	S 89.17° E	89.17°
10.00	S 89.17° E	10.00	S 89.17° E	89.17°
10.00	S 89.17° E	10.00	S 89.17° E	89.17°
10.00	S 89.17° E	10.00	S 89.17° E	89.17°
10.00	S 89.17° E	10.00	S 89.17° E	89.17°
10.00	S 89.17° E	10.00	S 89.17° E	89.17°
10.00	S 89.17° E	10.00	S 89.17° E	89.17°
10.00	S 89.17° E	10.00	S 89.17° E	89.17°
10.00	S 89.17° E	10.00	S 89.17° E	89.17°

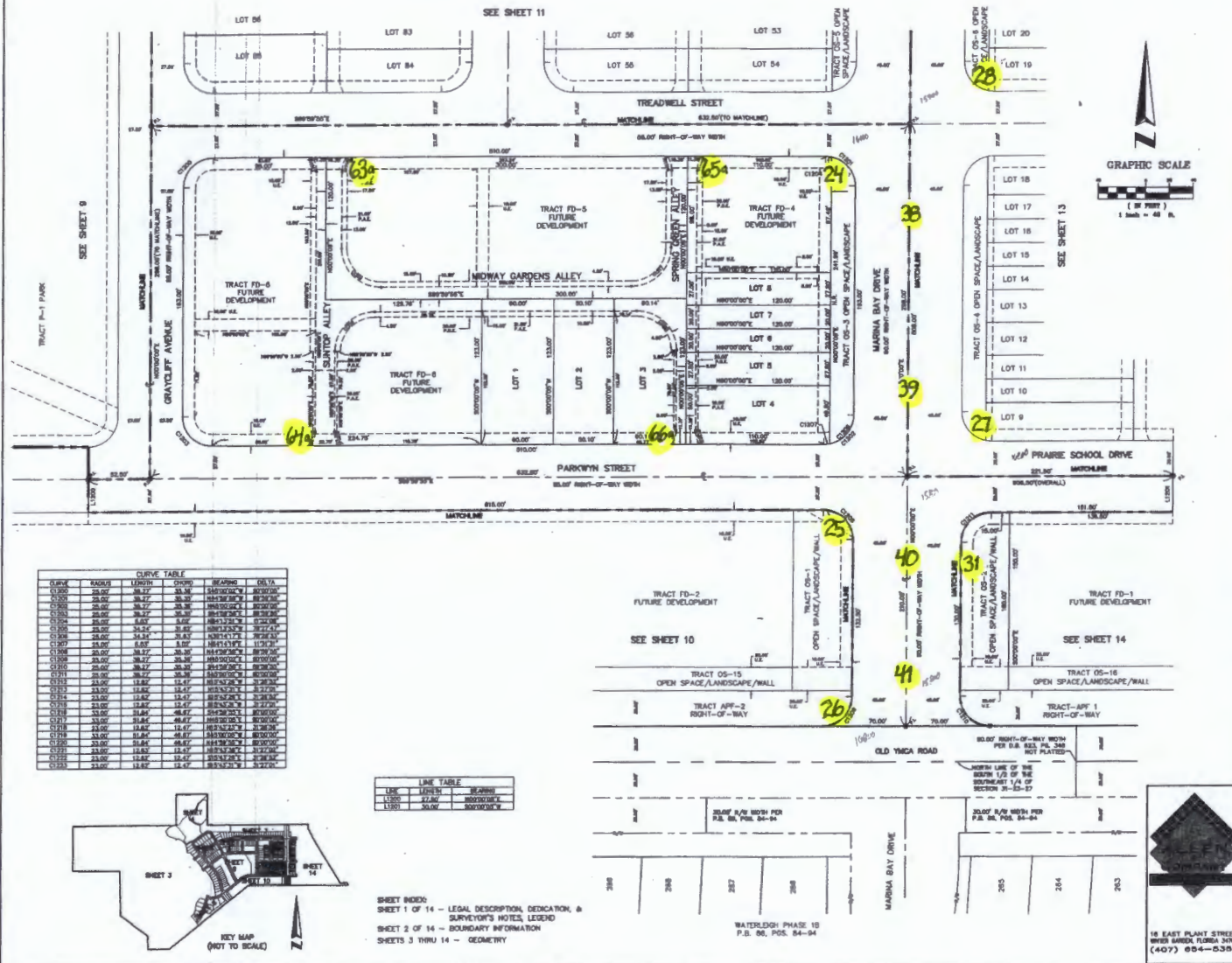
SHEET INDEX
SHEET 1 OF 14 - LEGAL DESCRIPTION, DEDICATION, &
SURVEYOR'S NOTES
SHEET 2 OF 14 - BOUNDARY INFORMATION, LEGEND
SHEETS 3 THRU 14 - GEOMETRY



HAWKSMOOR - PHASE 1

A PORTION OF SECTIONS 31 AND 32, TOWNSHIP 28 SOUTH, RANGE 27 EAST,
ORANGE COUNTY, FLORIDA

SHEET 12 OF 14 PLAT BOOK **93** PAGE **119**



CHORD	RADIUS	LENGTH	CHORD	BEARING	DELTA
C100	25.00'	39.27'	39.27'	S89°50'30\"	89°50'30\"
C200	25.00'	39.27'	39.27'	S89°50'30\"	89°50'30\"
C300	25.00'	39.27'	39.27'	S89°50'30\"	89°50'30\"
C400	25.00'	39.27'	39.27'	S89°50'30\"	89°50'30\"
C500	25.00'	39.27'	39.27'	S89°50'30\"	89°50'30\"
C600	25.00'	39.27'	39.27'	S89°50'30\"	89°50'30\"
C700	25.00'	39.27'	39.27'	S89°50'30\"	89°50'30\"
C800	25.00'	39.27'	39.27'	S89°50'30\"	89°50'30\"
C900	25.00'	39.27'	39.27'	S89°50'30\"	89°50'30\"
C1000	25.00'	39.27'	39.27'	S89°50'30\"	89°50'30\"
C1100	25.00'	39.27'	39.27'	S89°50'30\"	89°50'30\"
C1200	25.00'	39.27'	39.27'	S89°50'30\"	89°50'30\"
C1300	25.00'	39.27'	39.27'	S89°50'30\"	89°50'30\"
C1400	25.00'	39.27'	39.27'	S89°50'30\"	89°50'30\"
C1500	25.00'	39.27'	39.27'	S89°50'30\"	89°50'30\"
C1600	25.00'	39.27'	39.27'	S89°50'30\"	89°50'30\"
C1700	25.00'	39.27'	39.27'	S89°50'30\"	89°50'30\"
C1800	25.00'	39.27'	39.27'	S89°50'30\"	89°50'30\"
C1900	25.00'	39.27'	39.27'	S89°50'30\"	89°50'30\"
C2000	25.00'	39.27'	39.27'	S89°50'30\"	89°50'30\"
C2100	25.00'	39.27'	39.27'	S89°50'30\"	89°50'30\"
C2200	25.00'	39.27'	39.27'	S89°50'30\"	89°50'30\"
C2300	25.00'	39.27'	39.27'	S89°50'30\"	89°50'30\"
C2400	25.00'	39.27'	39.27'	S89°50'30\"	89°50'30\"
C2500	25.00'	39.27'	39.27'	S89°50'30\"	89°50'30\"

LINE	BEARING	BEARING
1200	S77°40'00\"	S77°40'00\"
1300	S60°00'00\"	S60°00'00\"



SHEET INDEX:
SHEET 1 OF 14 - LEGAL DESCRIPTION, DEDICATION, &
SURVEYOR'S NOTES, LEGEND
SHEET 2 OF 14 - BOUNDARY INFORMATION
SHEETS 3 THRU 14 - GEOMETRY

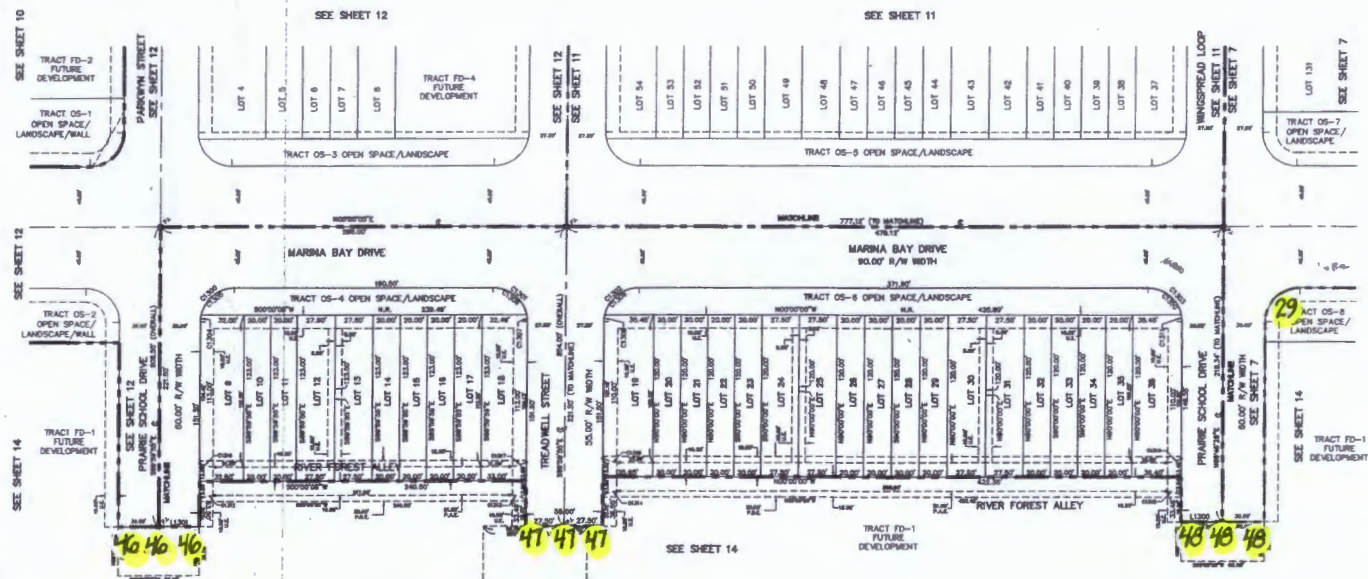


18 EAST PLANT STREET
MIAMI GARDEN, FLORIDA 33156
(407) 854-5355

HAWKSMOOR - PHASE 1

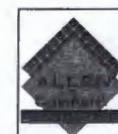
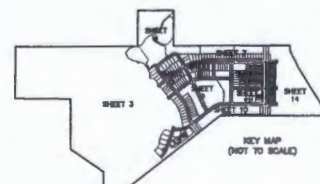
A PORTION OF SECTIONS 31 AND 32, TOWNSHIP 23 SOUTH, RANGE 27 EAST,
ORANGE COUNTY, FLORIDA

SHEET 13 OF 14 | PLAT BOOK **93** PAGE **120**

[illegible]

LINE TABLE		
LINE	LENGTH	WEIGHT
1.1500	30.007	2007.1325
1.1501	50.007	3345.2187

SHEET INDEX:
SHEET 1 OF 14 - LEGAL DESCRIPTION, DEDICATION, &
SURVEYOR'S NOTES
SHEET 2 OF 14 - BOUNDARY INFORMATION, LEGEND
SHEETS 3 THRU 14 - GEOMETRY



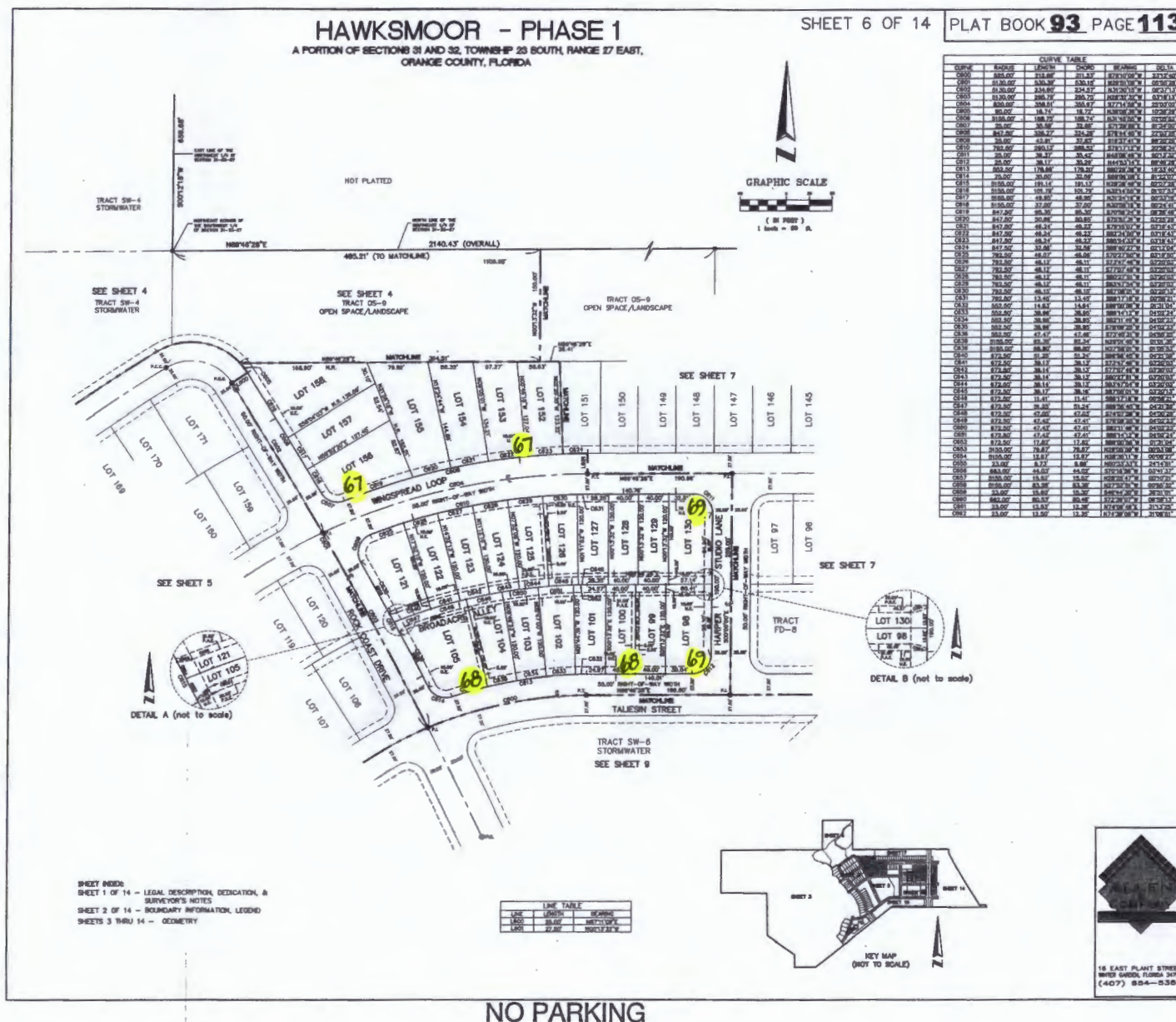
16 EAST PLANT STREET
WINTER GARDEN, FLORIDA 34787
(407) 854-2352

NO PARKING

HAWKSMOOR - PHASE 1

A PORTION OF SECTIONS 31 AND 32, TOWNSHIP 23 SOUTH, RANGE 27 EAST,
ORANGE COUNTY, FLORIDA

SHEET 6 OF 14

PLAT BOOK **93** PAGE **113**

NO PARKING

HAWKSMOOR - PHASE 1 A PORTION OF SECTIONS 31 AND 32, TOWNSHIP 23 SOUTH, RANGE 27 EAST, ORANGE COUNTY, FLORIDA

SHEET 7 OF 14 PLAT BOOK **93** PAGE **114**

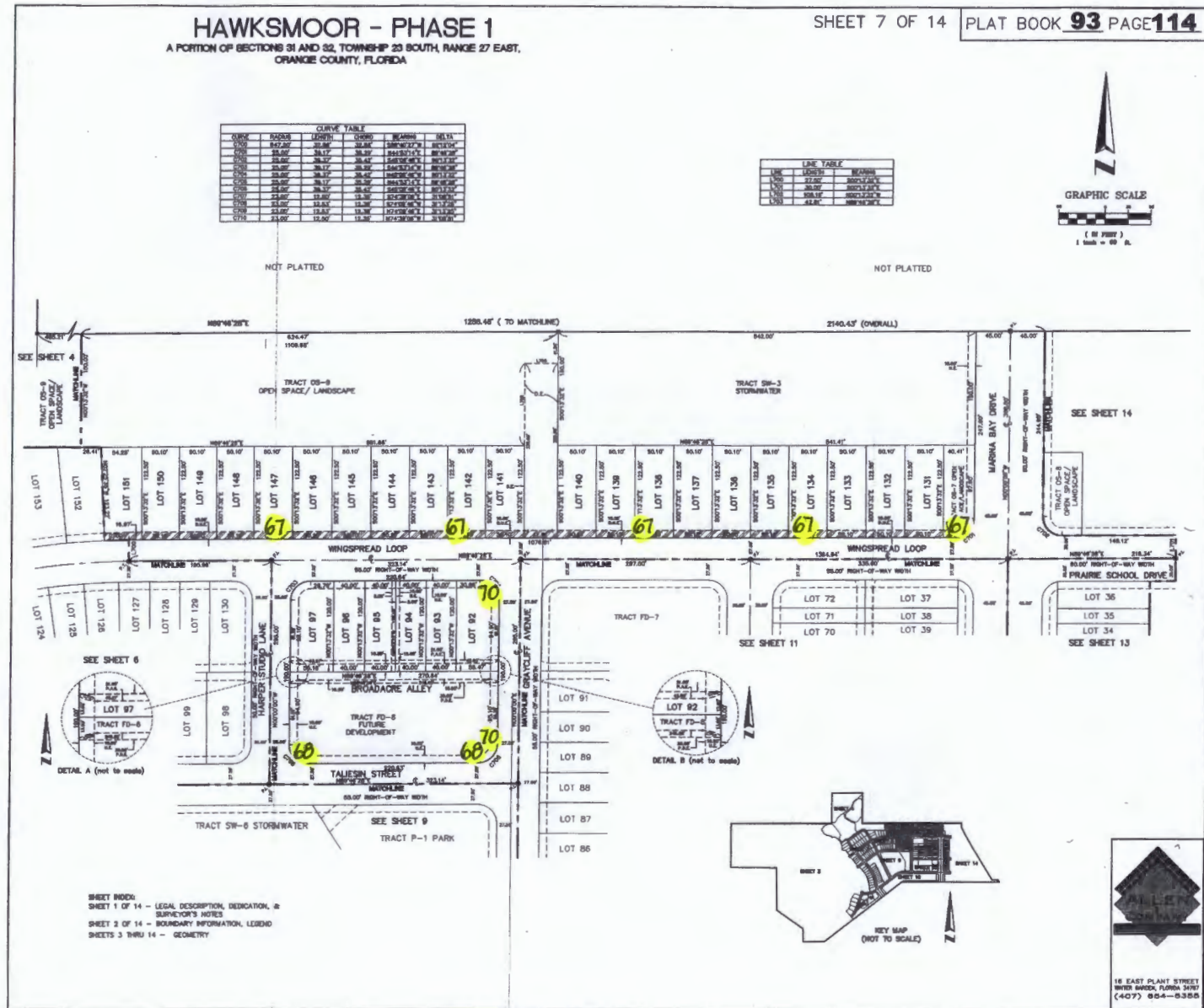
CURVE	POINTS	LENGTH	CHORD	BEARING	DELT
C101	147.00'	36.80'	34.80'	S89°02'27"W	10.12°
C102	25.00'	35.17'	35.30'	S84°50'15"E	10.12°
C103	25.00'	35.17'	35.42'	S45°02'45"E	10.12°
C104	25.00'	35.17'	35.30'	S45°02'45"E	10.12°
C105	25.00'	35.17'	35.42'	S45°02'45"E	10.12°
C106	25.00'	35.17'	35.30'	S84°50'15"E	10.12°
C107	25.00'	35.17'	35.42'	S89°02'27"W	10.12°
C108	25.00'	35.17'	35.30'	S89°02'27"W	10.12°
C109	25.00'	35.17'	35.42'	S89°02'27"W	10.12°
C110	25.00'	35.17'	35.30'	S89°02'27"W	10.12°

LINE	POINTS	BEARING	LENGTH
L101	147.00'	S89°02'27"W	10.12°
L102	25.00'	S84°50'15"E	10.12°
L103	25.00'	S45°02'45"E	10.12°
L104	25.00'	S45°02'45"E	10.12°
L105	25.00'	S45°02'45"E	10.12°
L106	25.00'	S84°50'15"E	10.12°
L107	25.00'	S89°02'27"W	10.12°
L108	25.00'	S89°02'27"W	10.12°
L109	25.00'	S89°02'27"W	10.12°
L110	25.00'	S89°02'27"W	10.12°



NO PARKING

NO PARKING



SHEET INDEX:
SHEET 1 OF 14 - LEGAL DESCRIPTION, DEDICATION, &
SURVEYOR'S NOTES
SHEET 2 OF 14 - BOUNDARY INFORMATION, LEGEND
SHEETS 3 THRU 14 - GEOMETRY

NO PARKING

A PORTION OF SECTIONS 31 AND 32, TOWNSHIP 23 SOUTH, RANGE 27 EAST,
ORANGE COUNTY, FLORIDA

GRAPHIC SCALE

(IN FEET)

1 inch = 100 ft.

NO PARKING

CUMYLA					
CUMYLA	RAOULS	LEONHART	CHORDS	BEHRENS	MAIERS
C000	176.00	198.87	187.00	187.00	187.00
C001	176.00	198.87	187.00	187.00	187.00
C002	176.00	198.87	187.00	187.00	187.00
C003	176.00	198.87	187.00	187.00	187.00
C004	176.00	198.87	187.00	187.00	187.00
C005	176.00	198.87	187.00	187.00	187.00
C006	176.00	198.87	187.00	187.00	187.00
C007	176.00	198.87	187.00	187.00	187.00
C008	176.00	198.87	187.00	187.00	187.00
C009	176.00	198.87	187.00	187.00	187.00
C010	176.00	198.87	187.00	187.00	187.00
C011	176.00	198.87	187.00	187.00	187.00
C012	176.00	198.87	187.00	187.00	187.00
C013	176.00	198.87	187.00	187.00	187.00
C014	176.00	198.87	187.00	187.00	187.00
C015	176.00	198.87	187.00	187.00	187.00
C016	176.00	198.87	187.00	187.00	187.00
C017	176.00	198.87	187.00	187.00	187.00
C018	176.00	198.87	187.00	187.00	187.00
C019	176.00	198.87	187.00	187.00	187.00
C020	176.00	198.87	187.00	187.00	187.00
C021	176.00	198.87	187.00	187.00	187.00
C022	176.00	198.87	187.00	187.00	187.00
C023	176.00	198.87	187.00	187.00	187.00
C024	176.00	198.87	187.00	187.00	187.00
C025	176.00	198.87	187.00	187.00	187.00
C026	176.00	198.87	187.00	187.00	187.00
C027	176.00	198.87	187.00	187.00	187.00
C028	176.00	198.87	187.00	187.00	187.00
C029	176.00	198.87	187.00	187.00	187.00
C030	176.00	198.87	187.00	187.00	187.00
C031	176.00	198.87	187.00	187.00	187.00
C032	176.00	198.87	187.00	187.00	187.00
C033	176.00	198.87	187.00	187.00	187.00
C034	176.00	198.87	187.00	187.00	187.00
C035	176.00	198.87	187.00	187.00	187.00
C036	176.00	198.87	187.00	187.00	187.00
C037	176.00	198.87	187.00	187.00	187.00
C038	176.00	198.87	187.00	187.00	187.00
C039	176.00	198.87	187.00	187.00	187.00
C040	176.00	198.87	187.00	187.00	187.00
C041	176.00	198.87	187.00	187.00	187.00
C042	176.00	198.87	187.00	187.00	187.00
C043	176.00	198.87	187.00	187.00	187.00
C044	176.00	198.87	187.00	187.00	187.00
C045	176.00	198.87	187.00	187.00	187.00
C046	176.00	198.87	187.00	187.00	187.00
C047	176.00	198.87	187.00	187.00	187.00
C048	176.00	198.87	187.00	187.00	187.00
C049	176.00	198.87	187.00	187.00	187.00
C050	176.00	198.87	187.00	187.00	187.00

LINE TABLE		
LINE	LENGTH	BEARING
L800	35.00	834503.0°
L801	13.87	80128.60°
L802	19.67	80567.10°
L803	50.00	80564.30°
L804	30.00	83824.7°
L805	27.90	84837.04°
L806	11.32	86545.30°
L807	50.74	87427.80°
L808	5.87	83090.00°
L809	27.67	83090.00°
L810	23.00	83090.00°
L811	18.86	83812.06°
L812	28.76	80808.01°
L813	15.57	83070.00°
L814	58.88	87747.30°

SHEET INDEX:
SHEET 1 OF 14 - LEGAL DESCRIPTION, DEDICATION, &
SURVEYOR'S NOTES
SHEET 2 OF 14 - BOUNDARY INFORMATION, LEGEND
SHEETS 3 THRU 14 - GEOMETRY

TABLE					
DATE	RA(00)	DEC(00)	OBJID	RA(MS)	DEC(S)
C001	42:20.0	08:45	1	42:20.00	08:45.00
C002	42:20.0	08:45	2	42:20.00	08:45.00
C003	42:20.0	08:45	3	42:20.00	08:45.00
C004	42:20.0	08:45	4	42:20.00	08:45.00
C005	42:20.0	08:45	5	42:20.00	08:45.00
C006	42:20.0	08:45	6	42:20.00	08:45.00
C007	42:20.0	08:45	7	42:20.00	08:45.00
C008	42:20.0	08:45	8	42:20.00	08:45.00
C009	42:20.0	08:45	9	42:20.00	08:45.00
C010	42:20.0	08:45	10	42:20.00	08:45.00
C011	42:20.0	08:45	11	42:20.00	08:45.00
C012	42:20.0	08:45	12	42:20.00	08:45.00
C013	42:20.0	08:45	13	42:20.00	08:45.00
C014	42:20.0	08:45	14	42:20.00	08:45.00
C015	42:20.0	08:45	15	42:20.00	08:45.00
C016	42:20.0	08:45	16	42:20.00	08:45.00
C017	42:20.0	08:45	17	42:20.00	08:45.00
C018	42:20.0	08:45	18	42:20.00	08:45.00
C019	42:20.0	08:45	19	42:20.00	08:45.00
C020	42:20.0	08:45	20	42:20.00	08:45.00
C021	42:20.0	08:45	21	42:20.00	08:45.00
C022	42:20.0	08:45	22	42:20.00	08:45.00
C023	42:20.0	08:45	23	42:20.00	08:45.00
C024	42:20.0	08:45	24	42:20.00	08:45.00
C025	42:20.0	08:45	25	42:20.00	08:45.00
C026	42:20.0	08:45	26	42:20.00	08:45.00
C027	42:20.0	08:45	27	42:20.00	08:45.00
C028	42:20.0	08:45	28	42:20.00	08:45.00
C029	42:20.0	08:45	29	42:20.00	08:45.00
C030	42:20.0	08:45	30	42:20.00	08:45.00
C031	42:20.0	08:45	31	42:20.00	08:45.00
C032	42:20.0	08:45	32	42:20.00	08:45.00
C033	42:20.0	08:45	33	42:20.00	08:45.00
C034	42:20.0	08:45	34	42:20.00	08:45.00
C035	42:20.0	08:45	35	42:20.00	08:45.00
C036	42:20.0	08:45	36	42:20.00	08:45.00
C037	42:20.0	08:45	37	42:20.00	08:45.00
C038	42:20.0	08:45	38	42:20.00	08:45.00
C039	42:20.0	08:45	39	42:20.00	08:45.00
C040	42:20.0	08:45	40	42:20.00	08:45.00
C041	42:20.0	08:45	41	42:20.00	08:45.00
C042	42:20.0	08:45	42	42:20.00	08:45.00
C043	42:20.0	08:45	43	42:20.00	08:45.00
C044	42:20.0	08:45	44	42:20.00	08:45.00
C045	42:20.0	08:45	45	42:20.00	08:45.00
C046	42:20.0	08:45	46	42:20.00	08:45.00
C047	42:20.0	08:45	47	42:20.00	08:45.00
C048	42:20.0	08:45	48	42:20.00	08:45.00
C049	42:20.0	08:45	49	42:20.00	08:45.00
C050	42:20.0	08:45	50	42:20.00	08:45.00
C051	42:20.0	08:45	51	42:20.00	08:45.00
C052	42:20.0	08:45	52	42:20.00	08:45.00
C053	42:20.0	08:45	53	42:20.00	08:45.00
C054	42:20.0	08:45	54	42:20.00	08:45.00
C055	42:20.0	08:45	55	42:20.00	08:45.00
C056	42:20.0	08:45	56	42:20.00	08:45.00
C057	42:20.0	08:45	57	42:20.00	08:45.00
C058	42:20.0	08:45	58	42:20.00	08:45.00
C059	42:20.0	08:45	59	42:20.00	08:45.00
C060	42:20.0	08:45	60	42:20.00	08:45.00
C061	42:20.0	08:45	61	42:20.00	08:45.00
C062	42:20.0	08:45	62	42:20.00	08:45.00
C063	42:20.0	08:45	63	42:20.00	08:45.00
C064	42:20.0	08:45	64	42:20.00	08:45.00
C065	42:20.0	08:45	65	42:20.00	08:45.00
C066	42:20.0	08:45	66	42:20.00	08:45.00
C067	42:20.0	08:45	67	42:20.00	08:45.00
C068	42:20.0	08:45	68	42:20.00	08:45.00
C069	42:20.0	08:45	69	42:20.00	08:45.00
C070	42:20.0	08:45	70	42:20.00	08:45.00
C071	42:20.0	08:45	71	42:20.00	08:45.00
C072	42:20.0	08:45	72	42:20.00	08:45.00
C073	42:20.0	08:45	73	42:20.00	08:45.00
C074	42:20.0	08:45	74	42:20.00	08:45.00
C075	42:20.0	08:45	75	42:20.00	08:45.00
C076	42:20.0	08:45	76	42:20.00	08:45.00
C077	42:20.0	08:45	77	42:20.00	08:45.00
C078	42:20.0	08:45	78	42:20.00	08:45.00
C079	42:20.0	08:45	79	42:20.00	08:45.00
C080	42:20.0	08:45	80	42:20.00	08:45.00
C081	42:20.0	08:45	81	42:20.00	08:45.00
C082	42:20.0	08:45	82	42:20.00	08:45.00
C083	42:20.0	08:45	83	42:20.00	08:45.00
C084	42:20.0	08:45	84	42:20.00	08:45.00
C085	42:20.0	08:45	85	42:20.00	08:45.00
C086	42:20.0	08:45	86	42:20.00	08:45.00
C087	42:20.0	08:45	87	42:20.00	08:45.00
C088	42:20.0	08:45	88	42:20.00	08:45.00
C089	42:20.0	08:45	89	42:20.00	08:45.00
C090	42:20.0	08:45	90	42:20.00	08:45.00
C091	42:20.0	08:45	91	42:20.00	08:45.00
C092	42:20.0	08:45	92	42:20.00	08:45.00
C093	42:20.0	08:45	93	42:20.00	08:45.00
C094	42:20.0	08:45	94	42:20.00	08:45.00
C095	42:20.0	08:45	95	42:20.00	08:45.00
C096	42:20.0	08:45	96	42:20.00	08:45.00
C097	42:20.0	08:45	97	42:20.00	08:45.00
C098	42:20.0	08:45	98	42:20.00	08:45.00
C099	42:20.0	08:45	99	42:20.00	08:45.00
C100	42:20.0	08:45	100	42:20.00	08:45.00

NO PARKING

NO PARKING

HAWKSMOOR - PHASE 1

A PORTION OF SECTIONS 31 AND 32, TOWNSHIP 23 SOUTH, RANGE 27 EAST,
ORANGE COUNTY, FLORIDA

SHEET 9 OF 14 PLAT BOOK **93** PAGE **116**

NO PARKING

NO PARKING



16 EAST PLANT STREET
ORANGE, FLORIDA 32667
(407) 854-5355

DETAIL A (not to scale)

SHEET NOTES:
SHEET 1 OF 14 - LEGAL DESCRIPTION, DEDICATION, &
SURVEYOR'S NOTES
SHEET 2 OF 14 - BOUNDARY INFORMATION, LEGEND
SHEETS 3 THRU 14 - GEOMETRY

LINE	LENGTH	BEARING
1000	100.00	S89°00'00"W
1001	100.00	S89°00'00"W
1002	100.00	S89°00'00"W
1003	100.00	S89°00'00"W
1004	100.00	S89°00'00"W
1005	100.00	S89°00'00"W
1006	100.00	S89°00'00"W
1007	100.00	S89°00'00"W
1008	100.00	S89°00'00"W
1009	100.00	S89°00'00"W
1010	100.00	S89°00'00"W

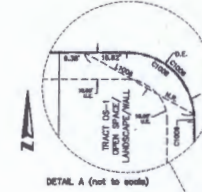
CURVE	RADIUS	LENGTH	CHORD	BEARING	DELTA
0000	858.00	301.21	344.77	S72°30'20"W	90°19'04"
0001	858.00	138.57	138.17	S89°00'00"W	17°02'37"
0002	858.00	213.89	213.89	S72°30'20"W	90°19'04"
0003	858.00	138.57	138.17	S89°00'00"W	17°02'37"
0004	858.00	301.21	344.77	S72°30'20"W	90°19'04"
0005	858.00	138.57	138.17	S89°00'00"W	17°02'37"
0006	858.00	213.89	213.89	S72°30'20"W	90°19'04"
0007	858.00	138.57	138.17	S89°00'00"W	17°02'37"
0008	858.00	301.21	344.77	S72°30'20"W	90°19'04"
0009	858.00	138.57	138.17	S89°00'00"W	17°02'37"
0010	858.00	213.89	213.89	S72°30'20"W	90°19'04"
0011	858.00	138.57	138.17	S89°00'00"W	17°02'37"
0012	858.00	301.21	344.77	S72°30'20"W	90°19'04"
0013	858.00	138.57	138.17	S89°00'00"W	17°02'37"
0014	858.00	213.89	213.89	S72°30'20"W	90°19'04"
0015	858.00	138.57	138.17	S89°00'00"W	17°02'37"
0016	858.00	301.21	344.77	S72°30'20"W	90°19'04"
0017	858.00	138.57	138.17	S89°00'00"W	17°02'37"
0018	858.00	213.89	213.89	S72°30'20"W	90°19'04"
0019	858.00	138.57	138.17	S89°00'00"W	17°02'37"
0020	858.00	301.21	344.77	S72°30'20"W	90°19'04"
0021	858.00	138.57	138.17	S89°00'00"W	17°02'37"
0022	858.00	213.89	213.89	S72°30'20"W	90°19'04"
0023	858.00	138.57	138.17	S89°00'00"W	17°02'37"
0024	858.00	301.21	344.77	S72°30'20"W	90°19'04"
0025	858.00	138.57	138.17	S89°00'00"W	17°02'37"
0026	858.00	213.89	213.89	S72°30'20"W	90°19'04"
0027	858.00	138.57	138.17	S89°00'00"W	17°02'37"
0028	858.00	301.21	344.77	S72°30'20"W	90°19'04"
0029	858.00	138.57	138.17	S89°00'00"W	17°02'37"
0030	858.00	213.89	213.89	S72°30'20"W	90°19'04"
0031	858.00	138.57	138.17	S89°00'00"W	17°02'37"
0032	858.00	301.21	344.77	S72°30'20"W	90°19'04"
0033	858.00	138.57	138.17	S89°00'00"W	17°02'37"

NO PARKING

NO PARKING

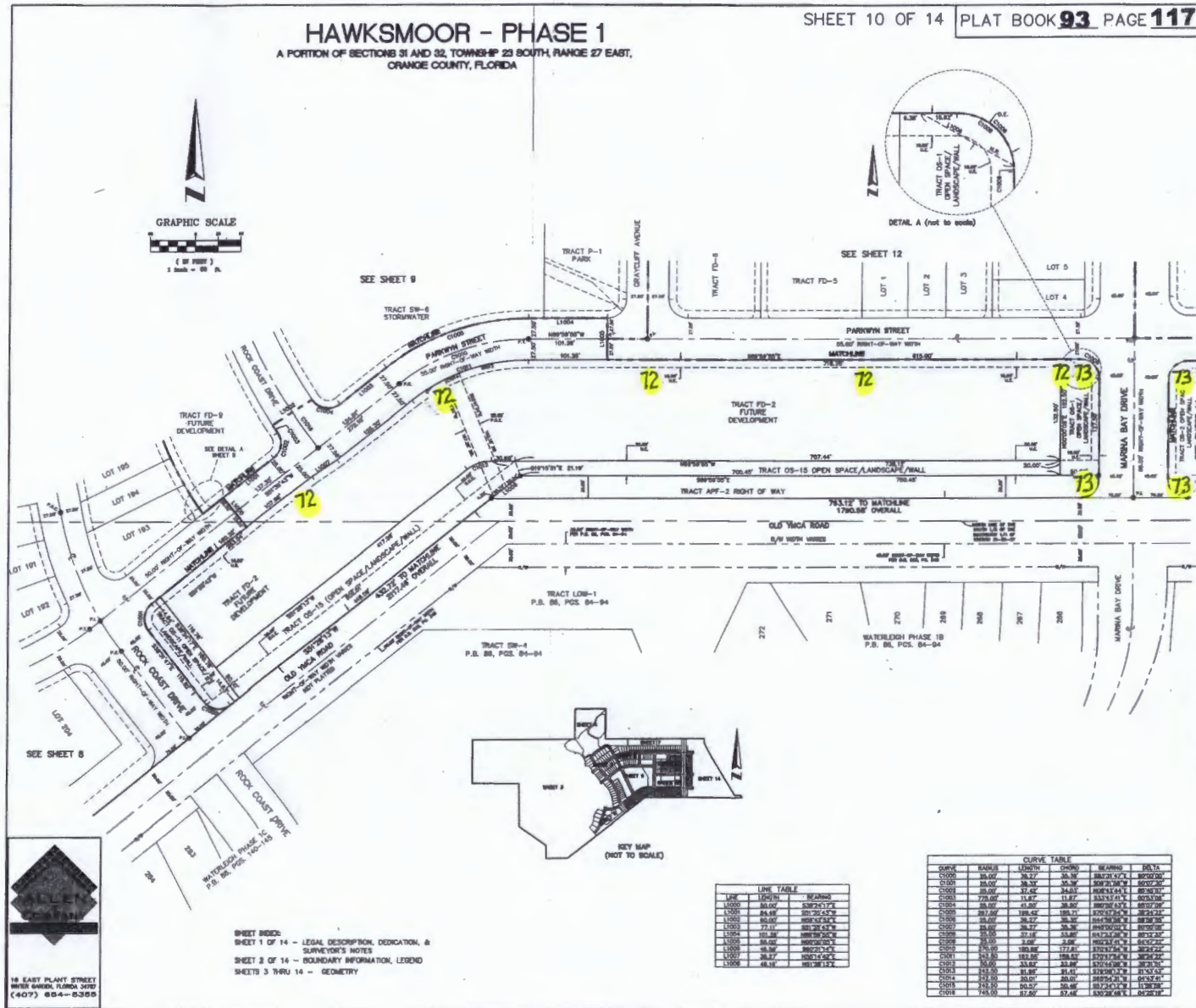
HAWKSMOOR - PHASE 1 A PORTION OF SECTIONS 31 AND 32, TOWNSHIP 23 SOUTH, RANGE 27 EAST, ORANGE COUNTY, FLORIDA

SHEET 10 OF 14 PLAT BOOK **93** PAGE **117**



NO PARKING

NO PARKING



LINE TABLE

LINE	BEARING	DISTANCE
L1000	89.00°	5.00
L1001	89.00°	5.00
L1002	89.00°	5.00
L1003	89.00°	5.00
L1004	89.00°	5.00
L1005	89.00°	5.00
L1006	89.00°	5.00
L1007	89.00°	5.00
L1008	89.00°	5.00
L1009	89.00°	5.00
L1010	89.00°	5.00

CURVE TABLE

CHORD	RADIUS	LENGTH	CHORD	BEARING	DELTA
C1000	30.00	30.00	30.00	89.00°	90.00°
C1001	30.00	30.00	30.00	89.00°	90.00°
C1002	30.00	30.00	30.00	89.00°	90.00°
C1003	30.00	30.00	30.00	89.00°	90.00°
C1004	30.00	30.00	30.00	89.00°	90.00°
C1005	30.00	30.00	30.00	89.00°	90.00°
C1006	30.00	30.00	30.00	89.00°	90.00°
C1007	30.00	30.00	30.00	89.00°	90.00°
C1008	30.00	30.00	30.00	89.00°	90.00°
C1009	30.00	30.00	30.00	89.00°	90.00°
C1010	30.00	30.00	30.00	89.00°	90.00°

SHEET INDEX:
SHEET 1 OF 14 - LEGAL DESCRIPTION, DEDICATION, &
SURVEYOR'S NOTES
SHEET 2 OF 14 - BOUNDARY INFORMATION, LEGEND
SHEETS 3 THRU 14 - GEOMETRY

18 EAST PLANT STREET
ORANGE, FLORIDA 32667
(407) 834-8389

NO PARKING

NO PARKING

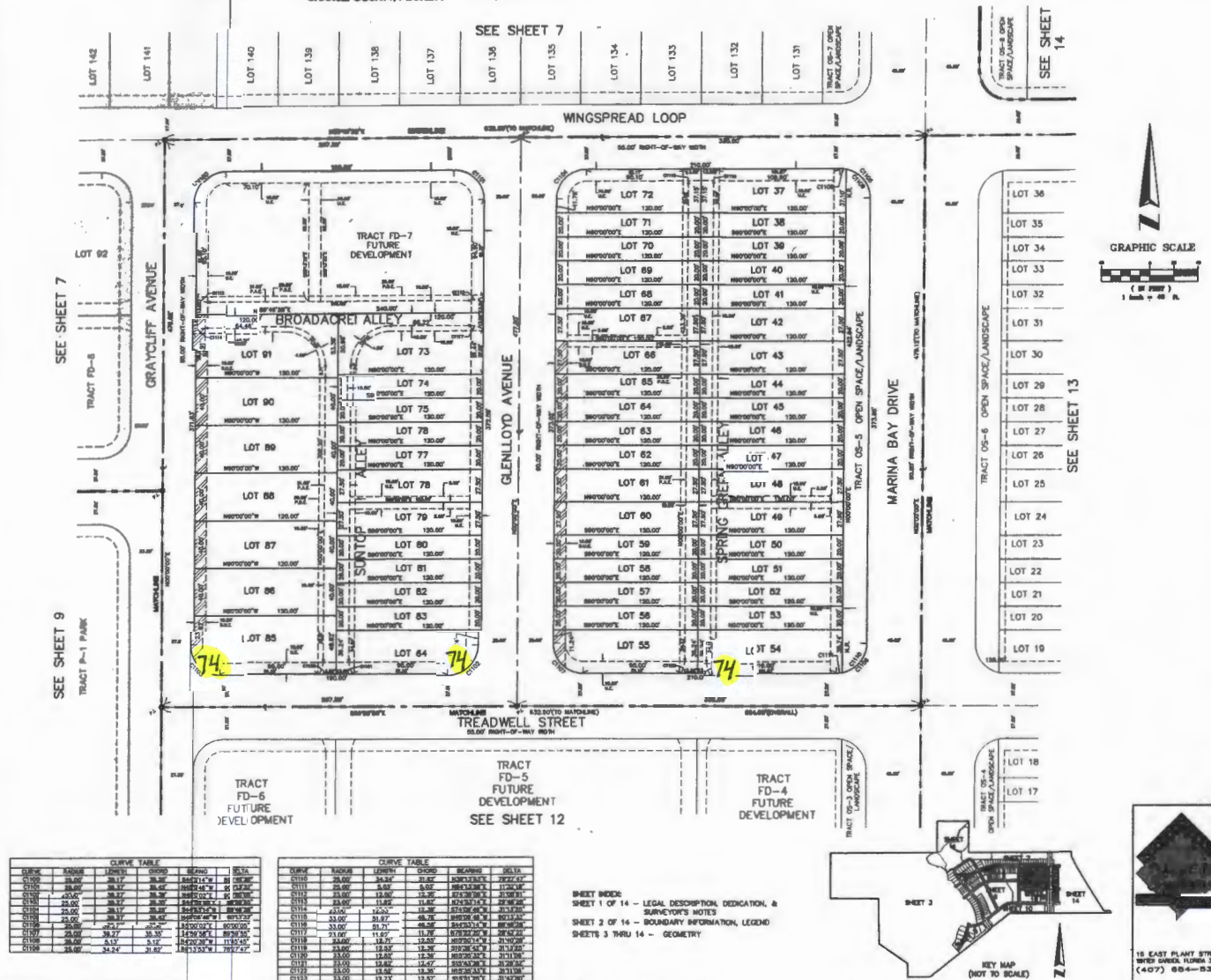
HAWSMOOR-PHASE 1

A PORTION OF SECTIONS 81 AND 82, TOWNSHIP 28 SOUTH, RANGE 27 EAST,
ORANGE COUNTY, FLORIDA

SHEET 11 OF 14 PLAT BOOK **93** PAGE **118**

NO PARKING

NO PARKING



CURVE TABLE

CURVE	RADIUS	CHORD	ARC LENGTH	AREA
C110	25.00	39.17	39.17	884.214" W
C111	25.00	39.17	39.17	884.214" W
C112	25.00	39.17	39.17	884.214" W
C113	25.00	39.17	39.17	884.214" W
C114	25.00	39.17	39.17	884.214" W
C115	25.00	39.17	39.17	884.214" W
C116	25.00	39.17	39.17	884.214" W
C117	25.00	39.17	39.17	884.214" W
C118	25.00	39.17	39.17	884.214" W
C119	25.00	39.17	39.17	884.214" W
C120	25.00	39.17	39.17	884.214" W

CURVE TABLE

CURVE	RADIUS	CHORD	ARC LENGTH	AREA
C121	25.00	39.17	39.17	884.214" W
C122	25.00	39.17	39.17	884.214" W
C123	25.00	39.17	39.17	884.214" W
C124	25.00	39.17	39.17	884.214" W
C125	25.00	39.17	39.17	884.214" W
C126	25.00	39.17	39.17	884.214" W
C127	25.00	39.17	39.17	884.214" W
C128	25.00	39.17	39.17	884.214" W
C129	25.00	39.17	39.17	884.214" W
C130	25.00	39.17	39.17	884.214" W

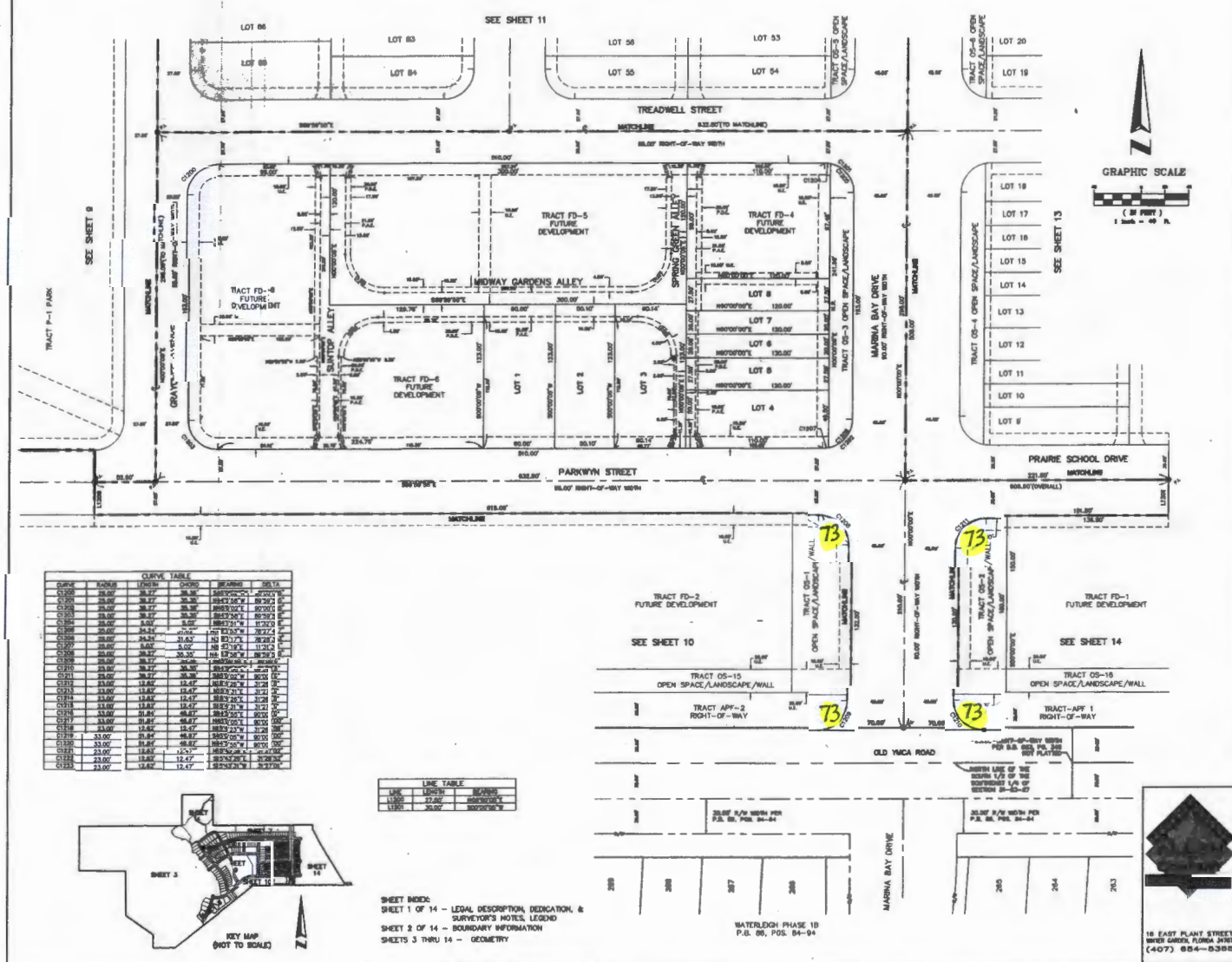
SHEET INDEX:
SHEET 1 OF 14 - LEGAL DESCRIPTION, DEDICATION, &
SURVEYOR'S NOTES
SHEET 2 OF 14 - BOUNDARY INFORMATION, LEGEND
SHEETS 3 THRU 14 - GEOMETRY

NO PARKING

HAWKSMOOR - PHASE 1

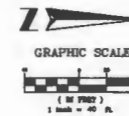
A PORTION OF SECTIONS 31 AND 32, TOWNSHIP 23 SOUTH, RANGE 27 EAST,
ORANGE COUNTY, FLORIDA

SHEET 12 OF 14 PLAT BOOK **93** PAGE **119**



NO PARKING

HAWKSMOOR - PHASE 1

A PORTION OF SECTIONS 31 AND 32, TOWNSHIP 23 SOUTH, RANGE 27 EAST,
ORANGE COUNTY, FLORIDASHEET 13 OF 14 PLAT BOOK **93** PAGE **120**

NO PARKING

NO PARKING

