



Interoffice Memorandum

January 26, 2018

TO: Mayor Teresa Jacobs  
and Board of County Commissioners

FROM: Mark V. Massaro, P.E., Director, Public Works Department

CONTACT PERSON: Christine N. Lofye, P. E., Manager  
Traffic Engineering Division

PHONE NUMBER: (407) 836-7890

SUBJ: Installation of "No Parking" signs in Sawgrass Pointe - Phase 2

The Fire Marshal recommends that the following "No Parking" signs be installed in Sawgrass Pointe - Phase 2:

Install "NO PARKING" signs on:  
Plumas Way  
Sumter Drive

**Action Requested: Approval of "No Parking" sign installations in Sawgrass Pointe - Phase 2. District 4.**

MVM/CNL/AHW/nad

Attachments

**SAWGRASS POINTE - PHASE 2**  
**LYING WITHIN SECTION 19, TOWNSHIP 24 SOUTH, RANGE 30 EAST,**  
**ORANGE COUNTY, FLORIDA**  
**DISTRICT # 4**

**NO PARKING with arrows**

- (1)                      on Plumas Way from Carson Drive extending approximately 1550ft  
west, south and east on the south, east and north sides**
  
- (2)                      on Sumter Drive west leg from Sumter Drive extending approximately  
1840ft west, south and east on the south, east and north sides**

**ahw/**

**1/26/18**



# SAWGRASS POINTE, PHASE 2

LYING WITHIN SECTION 19, TOWNSHIP 24 SOUTH, RANGE 30 EAST, ORANGE COUNTY, FLORIDA

SHEET 2 OF 4

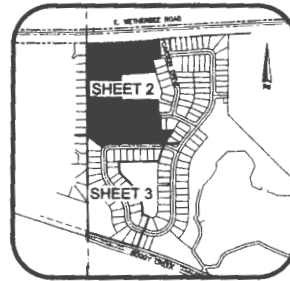
PLAT BOOK

89

PAGE 126

Curve #	Length	Radius	Delta	Chord Bearing	Chord
C1	465.26'	5929.65'	04°29'44"	S89°55'14"W	465.14'
C2	77.42'	50.00'	86°42'52"	S43°48'40"W	69.91'
C3	78.54'	50.00'	90°00'00"	S45°32'46"E	70.71'
C4	29.23'	225.00'	07°26'33"	N87°50'05"W	29.21'
C5	78.54'	50.00'	90°00'00"	S44°27'14"W	70.71'
C6	16.55'	25.00'	37°55'56"	N85°59'38"E	16.25'
C7	448.89'	5904.65'	04°21'14"	N85°59'29"E	448.58'
C8	116.13'	75.00'	88°42'52"	S43°48'40"W	104.87'
C9	117.81'	75.00'	90°00'00"	S45°32'46"E	106.07'
C10	38.17'	250.00'	08°58'36"	N87°04'04"W	39.13'
C11	117.81'	75.00'	90°00'00"	S44°27'14"W	106.07'
C12	39.27'	25.00'	90°00'00"	S45°32'46"E	35.34'
C13	35.71'	25.00'	88°42'52"	S43°48'40"W	34.39'
C14	387.50'	5954.65'	03°43'43"	N86°18'14"E	387.43'
C15	41.13'	5904.65'	00°23'53"	N84°00'50"E	41.13'
C16	50.52'	5904.65'	00°29'25"	N84°27'31"E	50.52'
C17	50.52'	5904.65'	00°29'25"	N84°56'56"E	50.52'
C18	50.52'	5904.65'	00°29'25"	N85°26'21"E	50.52'
C19	50.52'	5904.65'	00°29'25"	N85°55'48"E	50.52'
C20	50.52'	5904.65'	00°29'25"	N86°25'11"E	50.52'
C21	50.52'	5904.65'	00°29'25"	N86°54'38"E	50.52'
C22	50.52'	5904.65'	00°29'25"	N87°24'01"E	50.52'
C23	50.52'	5904.65'	00°29'25"	N87°53'25"E	50.52'
C24	3.37'	5904.65'	00°01'56"	N88°09'07"E	3.37'
C25	38.35'	75.00'	27°46'18"	S74°16'58"W	38.00'
C26	42.60'	75.00'	32°32'42"	S44°07'29"W	42.03'
C27	37.17'	75.00'	28°23'58"	S13°39'11"W	36.79'
C28	17.78'	75.00'	13°33'59"	S07°19'46"E	17.72'
C29	32.64'	75.00'	25°06'16"	S28°39'54"E	32.80'
C30	38.49'	75.00'	28°24'08"	S35°50'06"E	38.07'
C31	28.70'	75.00'	21°55'56"	S78°34'58"E	28.53'
C32	35.92'	75.00'	19°46'18"	S79°33'09"W	25.80'
C33	44.77'	75.00'	34°17'08"	S52°32'53"W	44.11'
C34	37.35'	75.00'	28°32'05"	S21°10'47"W	36.97'
C35	48.57'	5654.65'	00°28'53"	N87°56'39"E	48.57'
C36	52.61'	5954.65'	00°30'22"	N87°28'01"E	52.61'
C37	51.83'	5954.65'	00°29'55"	N86°57'52"E	51.83'
C38	54.82'	5954.65'	00°31'38"	N86°27'05"E	54.82'
C39	55.11'	5954.65'	00°31'49"	N85°58'21"E	55.11'
C40	54.82'	5954.65'	00°31'38"	N85°28'37"E	54.82'
C41	71.74'	5954.65'	00°41'25"	N84°47'05"E	71.74'
C42	85.00'	5779.65'	00°32'43"	N83°56'49"E	85.00'
C43	49.45'	5779.65'	00°29'25"	N84°27'53"E	49.45'
C44	49.45'	5779.65'	00°29'25"	N84°57'16"E	49.45'
C45	49.45'	5779.65'	00°29'25"	N85°26'43"E	49.45'
C46	49.45'	5779.65'	00°29'25"	N85°56'07"E	49.45'
C47	49.45'	5779.65'	00°29'25"	N86°25'32"E	49.45'
C48	49.45'	5779.65'	00°29'25"	N86°54'57"E	49.45'
C49	49.45'	5779.65'	00°29'25"	N87°24'22"E	49.45'
C50	52.12'	5779.65'	00°31'06"	N87°54'34"E	52.12'
C51	118.85'	5779.65'	01°10'42"	N88°45'25"E	118.88'

Curve #	Length	Radius	Delta	Chord Bearing	Chord
C83	68.19'	5779.65'	00°29'22"	N89°40'27"E	68.19'
C85	8.26'	6074.65'	00°04'40"	N87°15'10"E	8.26'
C86	52.88'	6074.65'	00°29'55"	N86°57'52"E	52.88'
C87	55.92'	6074.65'	00°31'38"	N86°27'05"E	55.92'
C88	56.27'	6074.65'	00°31'49"	N85°58'21"E	56.27'
C89	55.92'	6074.65'	00°31'38"	N85°28'37"E	55.92'
C90	96.01'	6074.65'	00°54'20"	N84°40'38"E	96.00'
C91	5.00'	6074.65'	00°02'50"	N87°15'55"E	5.00'
C92	16.33'	996.50'	01°00'35"	N88°56'56"E	16.33'
C93	15.89'	901.50'	01°50'35"	N88°56'56"E	15.89'



KEY MAP  
NOT TO SCALE



NO PARKING

NO PARKING

NO PARKING

**ASM**  
AMERICAN  
SURVEYING  
& MAPPING INC.  
CERTIFICATION OF AUTHORIZATION  
NUMBER 186583  
3191 MADRID BOULEVARD, SUITE 200  
ORLANDO, FLORIDA 32803 (407) 428-7979

LYING WITHIN SECTION 19, TOWNSHIP 24 SOUTH, RANGE 30 EAST, ORANGE COUNTY, FLORIDA

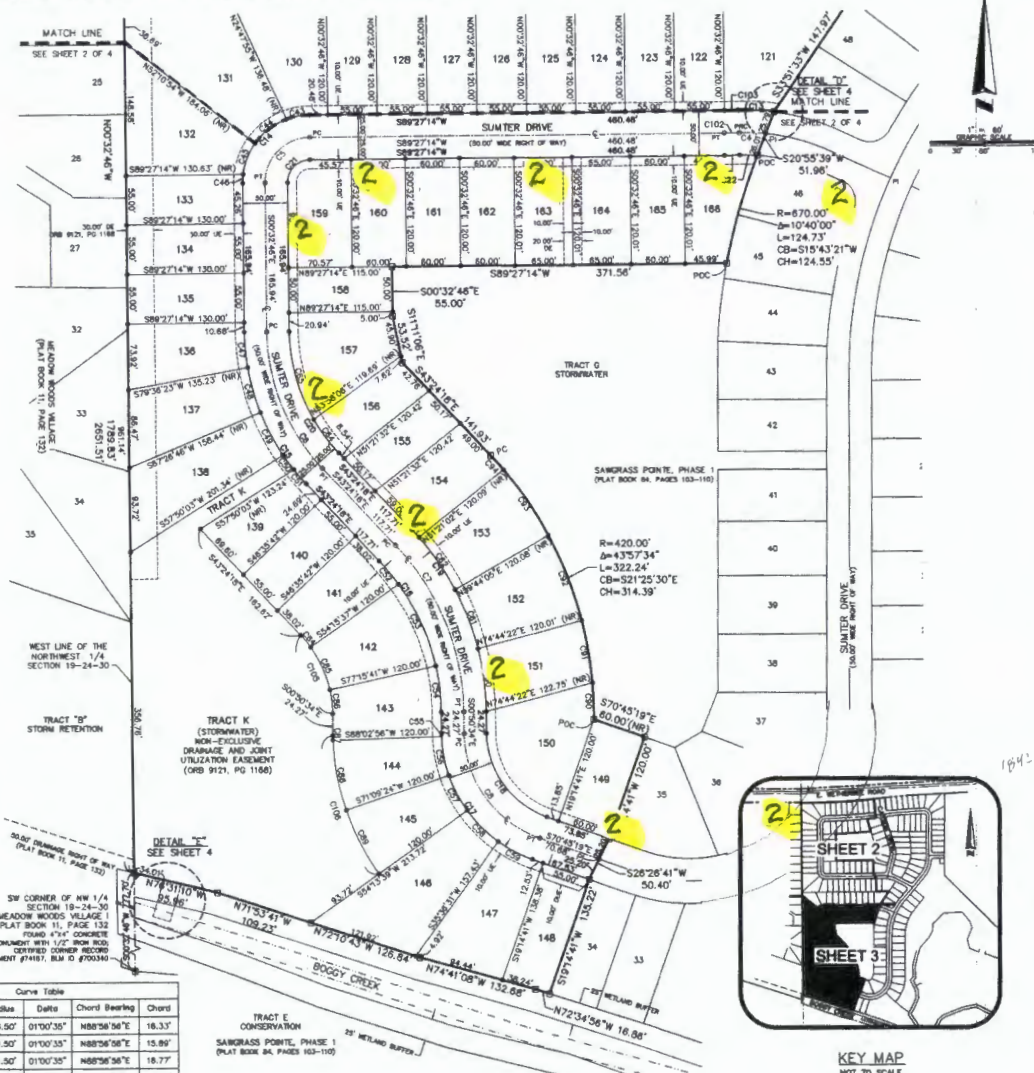
PLAT  
BOOK

89

PAGE 127

**ASM**  
AMERICAN  
SURVEYING  
& CMMAPPING INC.  
CERTIFICATION OF AUTHORIZATION  
NUMBER LHM383  
3191 MAGUIRE BOULEVARD, SUITE 200  
ORLANDO, FLORIDA 32803 (407) 426-7979

Curve #	Length	Radius	Delta	Chord Bearing	Chord
C102	16.33'	928.50'	01°10'35"	N88°58'56"E	16.33'
C103	15.89'	901.50'	01°10'35"	N88°58'58"E	15.89'
C104	16.77'	951.50'	01°10'35"	N88°58'58"E	16.77'
C105	96.67'	130.00'	42°33'44"	N22°07'28"W	94.37'
C106	184.60'	270.00'	34°55'48"	S18°18'27"E	182.07'



NO PARKING

**KEY MAP**  
NOT TO SCALE

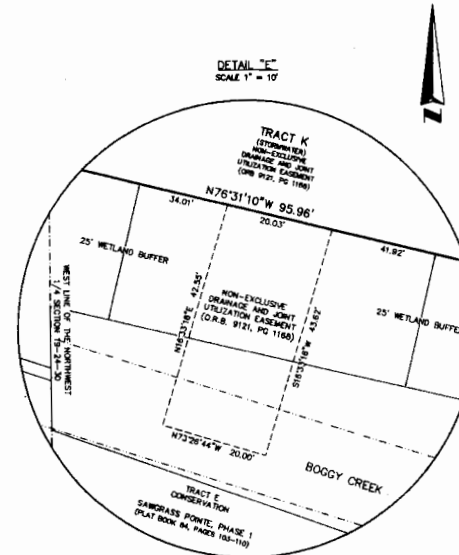
NO PARKING



LYING WITHIN SECTION 19, TOWNSHIP 24 SOUTH, RANGE 30 EAST, ORANGE COUNTY, FLORIDA

PLAT BOOK	<b>89</b>
--------------	-----------

PAGE **128**



Curve #	Length	Radius	Delta	Chord Bearing	Chord
C4	29.21'	225.00'	07°26'33"	N87°30'03"W	29.21'
C13	39.17'	250.00'	08°08'36"	N87°04'04"W	39.13'
C85	8.26'	6074.85'	00°04'40"	N87°15'10"E	8.26'
C96	32.86'	6074.85'	00°29'55"	N86°57'52"E	32.86'
C101	5.00'	6074.85'	00°02'50"	N87°15'55"E	5.00'
C107	13.27'	6074.85'	00°07'30"	N87°16'35"E	13.27'

