




Interoffice Memorandum

January 26, 2018

TO: Mayor Teresa Jacobs
and Board of County Commissioners

FROM: Mark V. Massaro, P.E., Director, Public Works Department 

CONTACT PERSON: Christine N. Lofye, P. E., Manager 
Traffic Engineering Division

PHONE NUMBER: (407) 836-7890

SUBJ: **Installation of Traffic Control Device in Estates at Lake Pickett – Phase 1**

Our staff recommends that the following traffic control device be installed in Estates at Lake Pickett – Phase 1:

Install "STOP" sign on:
Sailfin Drive at Old Lake Pickett Road

Action Requested: Approval of Traffic Control Device installation in Estates at Lake Pickett – Phase 1. District 5.

MVM/CNL/AHW/nad

Attachments

ESTATES AT LAKE PICKETT - PHASE 1
Situated in Sections 4 and 9, Township 22 South, Range 32 East
ORANGE COUNTY, FLORIDA
DISTRICT # 5

STOP/STREET

<u>(1)</u>	(Ft N)	on Sailfin Drive (9 inch)	17700
		at Old Lake Pickett Road (9 inch)	18000

ahw/

1/26/2018

DATE September 8, 2017

DISTRICT 5

CERTIFICATE OF COMPLETION

THIS IS TO CERTIFY THAT THE FACILITIES CONSTRUCTED BY:

DEVELOPER: Pulte Group; Attn. Mr. Josh Kalin

ADDRESS: 4901 Vineland Road, Suite 500, Orlando Florida, 32811

IN THE DEVELOPMENT OF: Lake Pickett Cluster Parcels 4 & 5 Phase 1 (aka. Estates at Lake Pickett Phase 1)

PROJECT NUMBER: 16-S-018

S-T-R 09-22-32

AS RECORDED IN PLAT BOOK 91, PAGES 79-86, ORANGE COUNTY RECORDS HAVE BEEN COMPLETED IN FORM AND MANNER ACCEPTABLE FOR FUTURE MAINTENANCE BY ORANGE COUNTY, FLORIDA.

CONTRACTOR: John M. Hall Construction Company

FACILITIES AND IMPROVEMENTS COMPLETE

REQUIRED DOCUMENTS

<u>YES</u>	<u>NOT REQUIRED</u>	
X		STREETS
X		DRAINAGE FACILITIES
X		WATER SYSTEM
	X	SANITARY SYSTEM
	X	RECLAIMED WATER SYSTEM
X		EXTERNAL SIDEWALKS
X		SCREENING
X		ELECTRICAL SERVICE
	X	UNDERDRAINS
X		ENVIRONMENTAL SWALES

<u>YES</u>	<u>NOT REQUIRED</u>	
X		ENGINEER CERTIFICATION
X		SURVEYOR CERTIFICATION
X		LETTER OF CREDIT
	X	CASH GUARANTEE
X		"AS-BUILT" DRAWINGS
X		APPROVAL OF AUDIO-OVERRIDE DEVICE
	X	RETENTION POND MAINTENANCE GUARANTEE
	X	UNDERDRAIN CERTIFICATION AND PERFORMANCE GUARANTEE
X		CERTIFIED UTILITY COST AND "BILL OF SALE"
X		PAYMENT FOR STREET AND TRAFFIC SIGNS
	X	VALUE OF TRANSFERRED PROPERTY FORM

ROADWAY CATEGORY

Entrance Sign ONLY

New Construction

Lane Miles

Roadway Type

<input type="checkbox"/>	Arterial
<input type="checkbox"/>	Collector
<input checked="" type="checkbox"/>	Subdivision (local)
<input type="checkbox"/>	Alternative Surface

	Single lane miles
	Single lane miles
1.00	Single lane miles
	Single lane miles

<input type="checkbox"/>	Private
<input type="checkbox"/>	Private
<input checked="" type="checkbox"/>	Private
<input type="checkbox"/>	Private

<input type="checkbox"/>	Public
<input type="checkbox"/>	Public
<input type="checkbox"/>	Public
<input type="checkbox"/>	Public

1.00 TOTAL LANE MILES

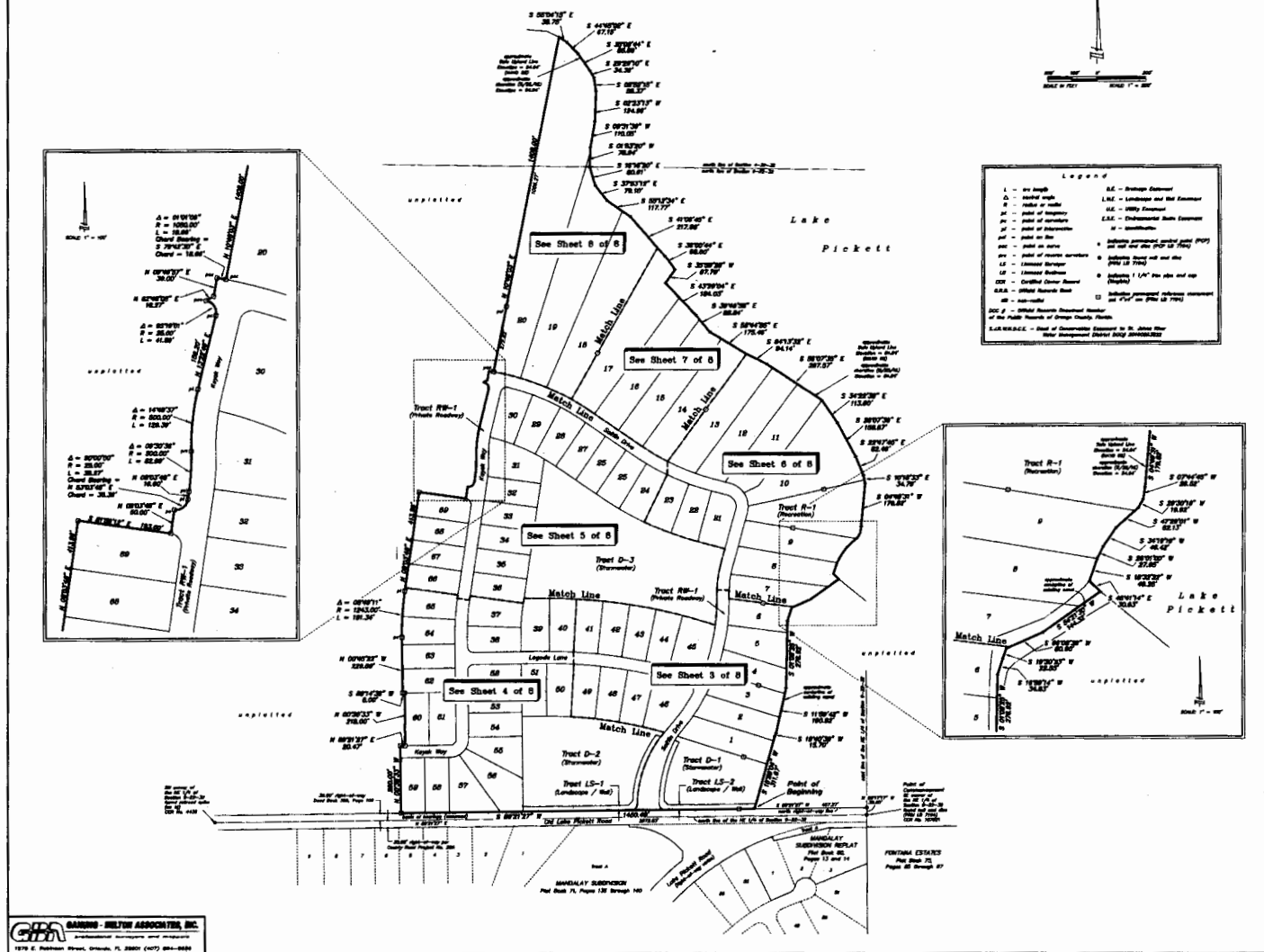
Larkin E. Toebelman
SENIOR INSPECTOR

Diana M. Almodovar
MANAGER, DEVELOPMENT ENGINEERING

[Signature]
CHIEF ENGINEER

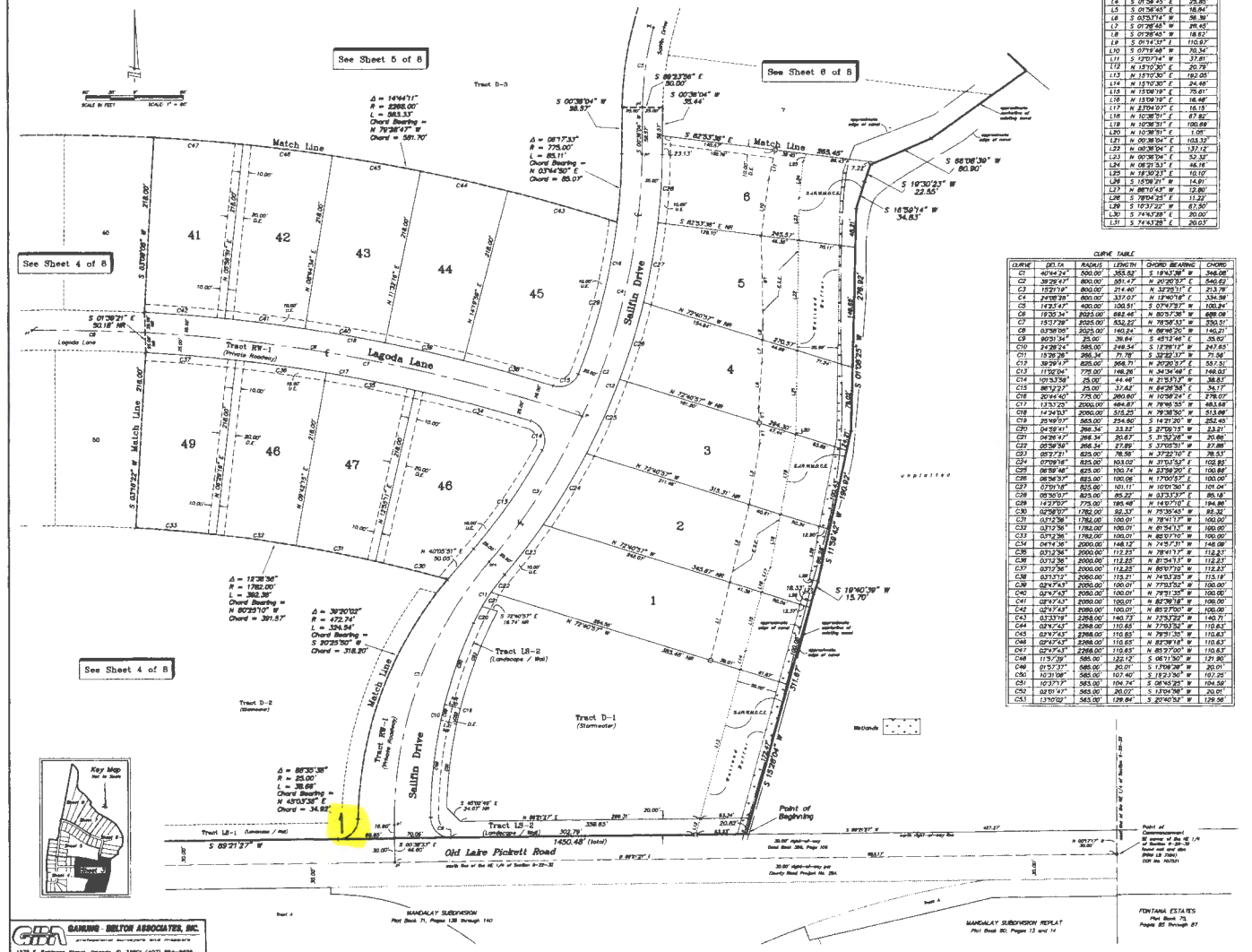
[Signature]
COUNTY ENGINEER, PUBLIC WORKS

Situated in Sections 4 and 9, Township 22 South, Range 32 East
Orange County, Florida



ESTATES AT LAKE PICKETT - PHASE 1

Situated in Sections 4 and 9, Township 22 South, Range 32 East
Orange County, Florida

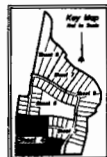


ESTATES AT LAKE PICKETT - PHASE 1

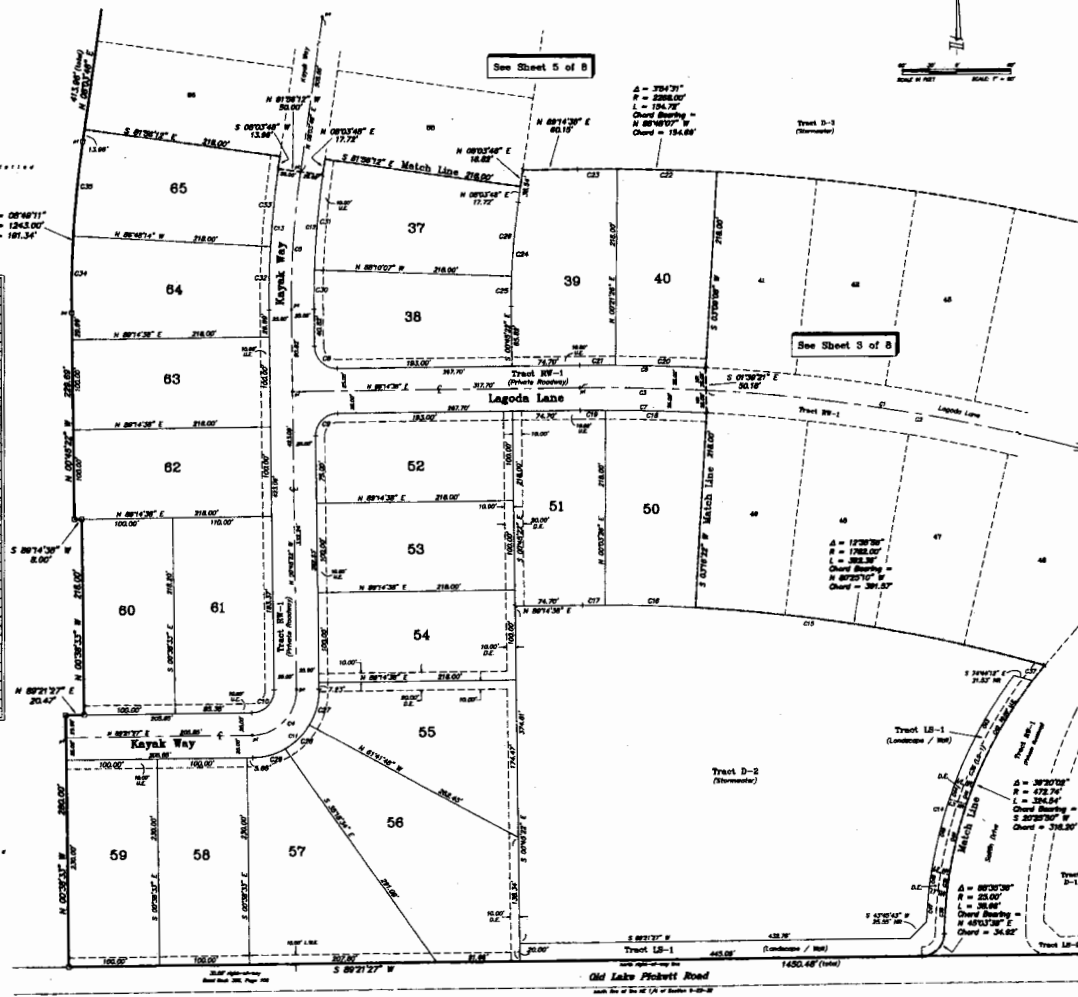
Situated in Sections 4 and 9, Township 22 South, Range 32 East
Orange County, Florida

LINE	BEARING	LENGTH
1	S 89°07'11" E	25.17
2	S 89°07'11" E	25.17
3	S 89°07'11" E	25.17
4	S 89°07'11" E	25.17

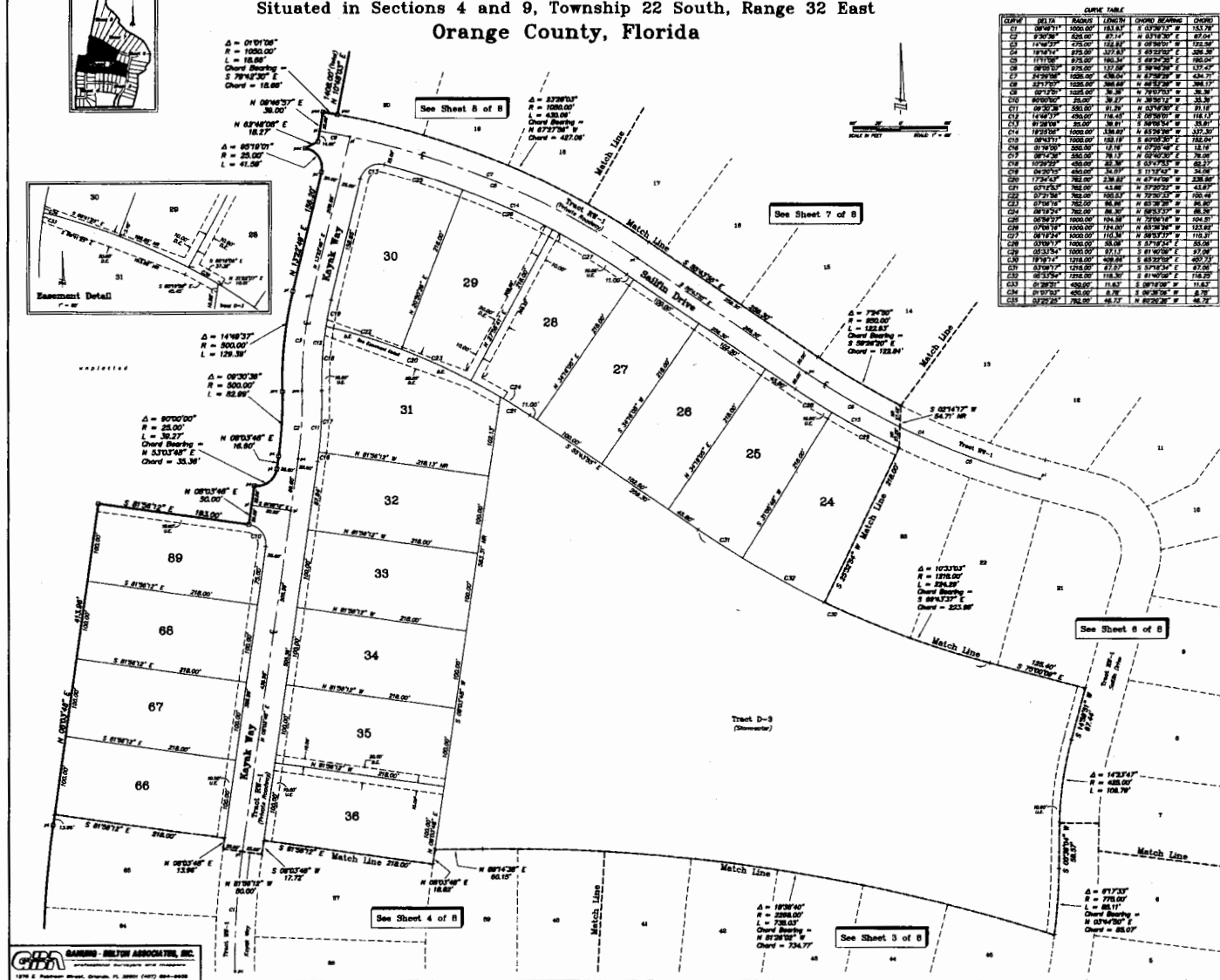
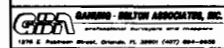
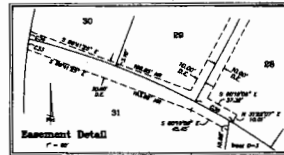
CURVE	DELTA	RADIUS	LENGTH	CHORD BEARING	CHORD	TANGENT
C1	17°30'34"	200.00	68.42	N 89°07'11" W	108.00	348.84
C2	17°30'34"	200.00	68.42	N 89°07'11" W	108.00	348.84
C3	17°30'34"	200.00	68.42	N 89°07'11" W	108.00	348.84
C4	17°30'34"	200.00	68.42	N 89°07'11" W	108.00	348.84
C5	17°30'34"	200.00	68.42	N 89°07'11" W	108.00	348.84
C6	17°30'34"	200.00	68.42	N 89°07'11" W	108.00	348.84
C7	17°30'34"	200.00	68.42	N 89°07'11" W	108.00	348.84
C8	17°30'34"	200.00	68.42	N 89°07'11" W	108.00	348.84
C9	17°30'34"	200.00	68.42	N 89°07'11" W	108.00	348.84
C10	17°30'34"	200.00	68.42	N 89°07'11" W	108.00	348.84
C11	17°30'34"	200.00	68.42	N 89°07'11" W	108.00	348.84
C12	17°30'34"	200.00	68.42	N 89°07'11" W	108.00	348.84
C13	17°30'34"	200.00	68.42	N 89°07'11" W	108.00	348.84
C14	17°30'34"	200.00	68.42	N 89°07'11" W	108.00	348.84
C15	17°30'34"	200.00	68.42	N 89°07'11" W	108.00	348.84
C16	17°30'34"	200.00	68.42	N 89°07'11" W	108.00	348.84
C17	17°30'34"	200.00	68.42	N 89°07'11" W	108.00	348.84
C18	17°30'34"	200.00	68.42	N 89°07'11" W	108.00	348.84
C19	17°30'34"	200.00	68.42	N 89°07'11" W	108.00	348.84
C20	17°30'34"	200.00	68.42	N 89°07'11" W	108.00	348.84
C21	17°30'34"	200.00	68.42	N 89°07'11" W	108.00	348.84
C22	17°30'34"	200.00	68.42	N 89°07'11" W	108.00	348.84
C23	17°30'34"	200.00	68.42	N 89°07'11" W	108.00	348.84
C24	17°30'34"	200.00	68.42	N 89°07'11" W	108.00	348.84
C25	17°30'34"	200.00	68.42	N 89°07'11" W	108.00	348.84
C26	17°30'34"	200.00	68.42	N 89°07'11" W	108.00	348.84
C27	17°30'34"	200.00	68.42	N 89°07'11" W	108.00	348.84
C28	17°30'34"	200.00	68.42	N 89°07'11" W	108.00	348.84
C29	17°30'34"	200.00	68.42	N 89°07'11" W	108.00	348.84
C30	17°30'34"	200.00	68.42	N 89°07'11" W	108.00	348.84
C31	17°30'34"	200.00	68.42	N 89°07'11" W	108.00	348.84
C32	17°30'34"	200.00	68.42	N 89°07'11" W	108.00	348.84
C33	17°30'34"	200.00	68.42	N 89°07'11" W	108.00	348.84
C34	17°30'34"	200.00	68.42	N 89°07'11" W	108.00	348.84
C35	17°30'34"	200.00	68.42	N 89°07'11" W	108.00	348.84
C36	17°30'34"	200.00	68.42	N 89°07'11" W	108.00	348.84
C37	17°30'34"	200.00	68.42	N 89°07'11" W	108.00	348.84
C38	17°30'34"	200.00	68.42	N 89°07'11" W	108.00	348.84
C39	17°30'34"	200.00	68.42	N 89°07'11" W	108.00	348.84
C40	17°30'34"	200.00	68.42	N 89°07'11" W	108.00	348.84
C41	17°30'34"	200.00	68.42	N 89°07'11" W	108.00	348.84
C42	17°30'34"	200.00	68.42	N 89°07'11" W	108.00	348.84
C43	17°30'34"	200.00	68.42	N 89°07'11" W	108.00	348.84
C44	17°30'34"	200.00	68.42	N 89°07'11" W	108.00	348.84
C45	17°30'34"	200.00	68.42	N 89°07'11" W	108.00	348.84
C46	17°30'34"	200.00	68.42	N 89°07'11" W	108.00	348.84
C47	17°30'34"	200.00	68.42	N 89°07'11" W	108.00	348.84



GARDNER - MULLON ASSOCIATES, INC.
Professional Surveyors and Engineers
1278 E. Palm Beach Blvd., Suite 100, Palm Beach, FL 33480 (407) 855-8800



MANUALY SURVEYED
Plot Book 71, Pages 130 through 140

ESTATES AT LAKE PICKETT - PHASE 1Sited in Sections 4 and 9, Township 22 South, Range 32 East
Orange County, Florida

LINE	BEARING	DISTANCE	CHORD BEARING	CHORD DISTANCE
C1	S 0°00'00" E	100.00'	S 0°00'00" E	100.00'
C2	S 0°00'00" E	100.00'	S 0°00'00" E	100.00'
C3	S 0°00'00" E	100.00'	S 0°00'00" E	100.00'
C4	S 0°00'00" E	100.00'	S 0°00'00" E	100.00'
C5	S 0°00'00" E	100.00'	S 0°00'00" E	100.00'
C6	S 0°00'00" E	100.00'	S 0°00'00" E	100.00'
C7	S 0°00'00" E	100.00'	S 0°00'00" E	100.00'
C8	S 0°00'00" E	100.00'	S 0°00'00" E	100.00'
C9	S 0°00'00" E	100.00'	S 0°00'00" E	100.00'
C10	S 0°00'00" E	100.00'	S 0°00'00" E	100.00'
C11	S 0°00'00" E	100.00'	S 0°00'00" E	100.00'
C12	S 0°00'00" E	100.00'	S 0°00'00" E	100.00'
C13	S 0°00'00" E	100.00'	S 0°00'00" E	100.00'
C14	S 0°00'00" E	100.00'	S 0°00'00" E	100.00'
C15	S 0°00'00" E	100.00'	S 0°00'00" E	100.00'
C16	S 0°00'00" E	100.00'	S 0°00'00" E	100.00'
C17	S 0°00'00" E	100.00'	S 0°00'00" E	100.00'
C18	S 0°00'00" E	100.00'	S 0°00'00" E	100.00'
C19	S 0°00'00" E	100.00'	S 0°00'00" E	100.00'
C20	S 0°00'00" E	100.00'	S 0°00'00" E	100.00'
C21	S 0°00'00" E	100.00'	S 0°00'00" E	100.00'
C22	S 0°00'00" E	100.00'	S 0°00'00" E	100.00'
C23	S 0°00'00" E	100.00'	S 0°00'00" E	100.00'
C24	S 0°00'00" E	100.00'	S 0°00'00" E	100.00'
C25	S 0°00'00" E	100.00'	S 0°00'00" E	100.00'
C26	S 0°00'00" E	100.00'	S 0°00'00" E	100.00'
C27	S 0°00'00" E	100.00'	S 0°00'00" E	100.00'
C28	S 0°00'00" E	100.00'	S 0°00'00" E	100.00'
C29	S 0°00'00" E	100.00'	S 0°00'00" E	100.00'
C30	S 0°00'00" E	100.00'	S 0°00'00" E	100.00'
C31	S 0°00'00" E	100.00'	S 0°00'00" E	100.00'
C32	S 0°00'00" E	100.00'	S 0°00'00" E	100.00'
C33	S 0°00'00" E	100.00'	S 0°00'00" E	100.00'
C34	S 0°00'00" E	100.00'	S 0°00'00" E	100.00'
C35	S 0°00'00" E	100.00'	S 0°00'00" E	100.00'

ESTATES AT LAKE PICKETT - PHASE 1

Situated in Sections 4 and 9, Township 22 South, Range 32 East
Orange County, Florida

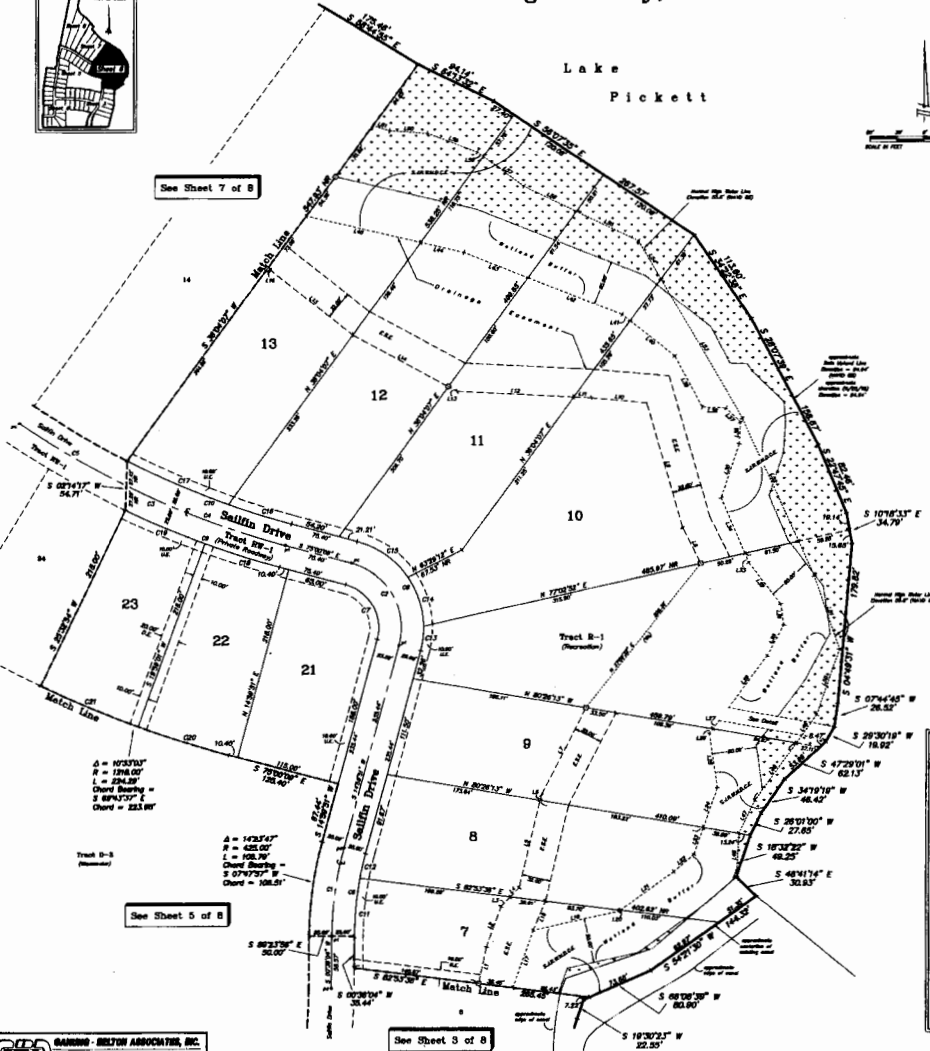
Sheet 6 of 8

PLAT BOOK 91

PAGE 84



See Sheet 7 of 8



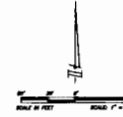
$\Delta = 100311'$
 $R = 100311'$
 $L = 254.29'$
Chord Bearing =
 $S 89^{\circ}43'57'' E$
Chord = 223.89'

$\Delta = 142347'$
 $R = 425.00'$
Chord Bearing =
 $S 07^{\circ}07'57'' E$
Chord = 108.51'

See Sheet 5 of 8

See Sheet 3 of 8

Lake
Pickett

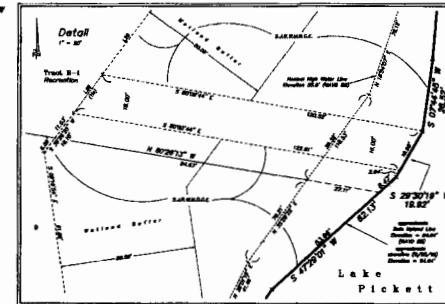


Scale: 1" = 40'

CURVE	DELTA	RADIUS	LENGTH	CHORD BEARING	CHORD
C1	143.24°	498.00'	100.21'	S 07°07'57" E	108.24'
C2	89.00°	177.87'	N 89°00'00" E	177.87'	177.87'
C3	89.00°	177.87'	S 89°00'00" E	177.87'	177.87'
C4	111.88°	275.00'	100.21'	S 89°00'00" E	108.24'
C5	89.00°	177.87'	N 89°00'00" E	177.87'	177.87'
C6	143.24°	498.00'	100.21'	S 07°07'57" E	108.24'
C7	89.00°	177.87'	N 89°00'00" E	177.87'	177.87'
C8	89.00°	177.87'	S 89°00'00" E	177.87'	177.87'
C9	111.88°	275.00'	100.21'	S 89°00'00" E	108.24'
C10	89.00°	177.87'	N 89°00'00" E	177.87'	177.87'
C11	143.24°	498.00'	100.21'	S 07°07'57" E	108.24'
C12	89.00°	177.87'	N 89°00'00" E	177.87'	177.87'
C13	89.00°	177.87'	S 89°00'00" E	177.87'	177.87'
C14	111.88°	275.00'	100.21'	S 89°00'00" E	108.24'
C15	89.00°	177.87'	N 89°00'00" E	177.87'	177.87'
C16	143.24°	498.00'	100.21'	S 07°07'57" E	108.24'
C17	89.00°	177.87'	N 89°00'00" E	177.87'	177.87'
C18	89.00°	177.87'	S 89°00'00" E	177.87'	177.87'
C19	111.88°	275.00'	100.21'	S 89°00'00" E	108.24'
C20	89.00°	177.87'	N 89°00'00" E	177.87'	177.87'
C21	143.24°	498.00'	100.21'	S 07°07'57" E	108.24'

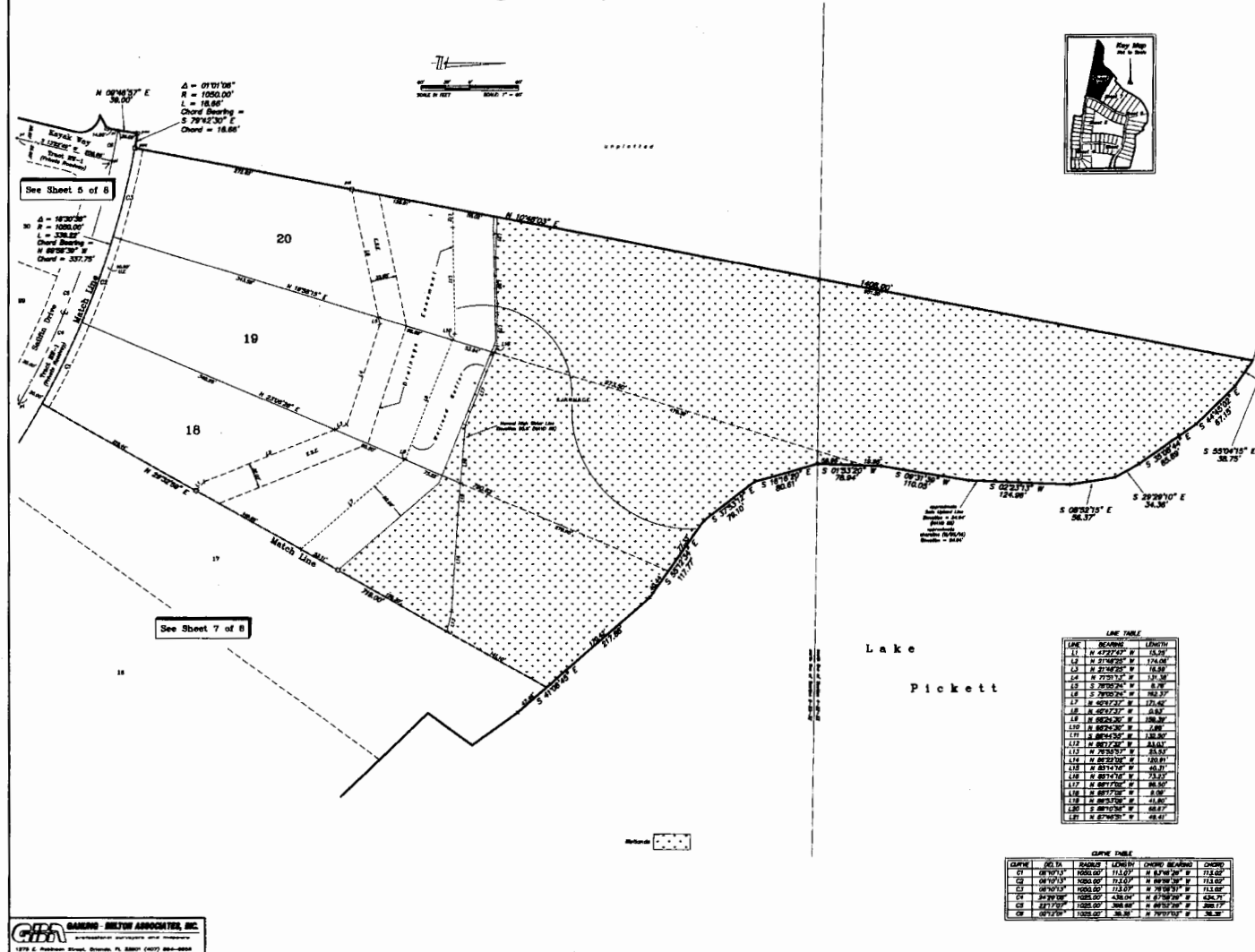
LINE	BEARING	LENGTH	LINE	BEARING	LENGTH
L1	S 17°07'57" W	41.89'	L32	N 27°07'57" W	58.81'
L2	S 17°07'57" W	41.89'	L33	N 27°07'57" W	58.81'
L3	S 17°07'57" W	41.89'	L34	N 27°07'57" W	58.81'
L4	S 17°07'57" W	41.89'	L35	N 27°07'57" W	58.81'
L5	S 17°07'57" W	41.89'	L36	N 27°07'57" W	58.81'
L6	S 17°07'57" W	41.89'	L37	N 27°07'57" W	58.81'
L7	S 17°07'57" W	41.89'	L38	N 27°07'57" W	58.81'
L8	S 17°07'57" W	41.89'	L39	N 27°07'57" W	58.81'
L9	S 17°07'57" W	41.89'	L40	N 27°07'57" W	58.81'
L10	S 17°07'57" W	41.89'	L41	N 27°07'57" W	58.81'
L11	S 17°07'57" W	41.89'	L42	N 27°07'57" W	58.81'
L12	S 17°07'57" W	41.89'	L43	N 27°07'57" W	58.81'
L13	S 17°07'57" W	41.89'	L44	N 27°07'57" W	58.81'
L14	S 17°07'57" W	41.89'	L45	N 27°07'57" W	58.81'
L15	S 17°07'57" W	41.89'	L46	N 27°07'57" W	58.81'
L16	S 17°07'57" W	41.89'	L47	N 27°07'57" W	58.81'
L17	S 17°07'57" W	41.89'	L48	N 27°07'57" W	58.81'
L18	S 17°07'57" W	41.89'	L49	N 27°07'57" W	58.81'
L19	S 17°07'57" W	41.89'	L50	N 27°07'57" W	58.81'
L20	S 17°07'57" W	41.89'	L51	N 27°07'57" W	58.81'
L21	S 17°07'57" W	41.89'	L52	N 27°07'57" W	58.81'
L22	S 17°07'57" W	41.89'	L53	N 27°07'57" W	58.81'
L23	S 17°07'57" W	41.89'	L54	N 27°07'57" W	58.81'
L24	S 17°07'57" W	41.89'	L55	N 27°07'57" W	58.81'
L25	S 17°07'57" W	41.89'	L56	N 27°07'57" W	58.81'
L26	S 17°07'57" W	41.89'	L57	N 27°07'57" W	58.81'
L27	S 17°07'57" W	41.89'	L58	N 27°07'57" W	58.81'
L28	S 17°07'57" W	41.89'	L59	N 27°07'57" W	58.81'
L29	S 17°07'57" W	41.89'	L60	N 27°07'57" W	58.81'
L30	S 17°07'57" W	41.89'	L61	N 27°07'57" W	58.81'
L31	S 17°07'57" W	41.89'	L62	N 27°07'57" W	58.81'

Lake
Pickett



ESTATES AT LAKE PICKETT - PHASE 1

Situated in Sections 4 and 9, Township 22 South, Range 32 East
Orange County, Florida



LINE TABLE

LINE	BEARING	LENGTH
11	N 4°46'37\"	36.00
12	N 2°46'37\"	174.00
13	N 2°46'37\"	18.00
14	N 2°46'37\"	12.00
15	S 2°46'37\"	8.00
16	S 2°46'37\"	163.37
17	N 80°47'5\"	22.42
18	N 80°47'5\"	0.84
19	N 80°47'5\"	198.00
20	N 80°47'5\"	1.00
21	N 80°47'5\"	138.00
22	N 80°47'5\"	13.00
23	N 80°47'5\"	23.00
24	N 80°47'5\"	0.84
25	N 80°47'5\"	0.84
26	N 80°47'5\"	0.84
27	N 80°47'5\"	0.84
28	N 80°47'5\"	0.84
29	N 80°47'5\"	0.84
30	N 80°47'5\"	0.84
31	N 80°47'5\"	0.84
32	N 80°47'5\"	0.84
33	N 80°47'5\"	0.84
34	N 80°47'5\"	0.84
35	N 80°47'5\"	0.84
36	N 80°47'5\"	0.84
37	N 80°47'5\"	0.84
38	N 80°47'5\"	0.84
39	N 80°47'5\"	0.84
40	N 80°47'5\"	0.84
41	N 80°47'5\"	0.84
42	N 80°47'5\"	0.84
43	N 80°47'5\"	0.84
44	N 80°47'5\"	0.84
45	N 80°47'5\"	0.84
46	N 80°47'5\"	0.84
47	N 80°47'5\"	0.84
48	N 80°47'5\"	0.84
49	N 80°47'5\"	0.84
50	N 80°47'5\"	0.84
51	N 80°47'5\"	0.84
52	N 80°47'5\"	0.84
53	N 80°47'5\"	0.84
54	N 80°47'5\"	0.84
55	N 80°47'5\"	0.84
56	N 80°47'5\"	0.84
57	N 80°47'5\"	0.84
58	N 80°47'5\"	0.84
59	N 80°47'5\"	0.84
60	N 80°47'5\"	0.84
61	N 80°47'5\"	0.84
62	N 80°47'5\"	0.84
63	N 80°47'5\"	0.84
64	N 80°47'5\"	0.84
65	N 80°47'5\"	0.84
66	N 80°47'5\"	0.84
67	N 80°47'5\"	0.84
68	N 80°47'5\"	0.84
69	N 80°47'5\"	0.84
70	N 80°47'5\"	0.84
71	N 80°47'5\"	0.84
72	N 80°47'5\"	0.84
73	N 80°47'5\"	0.84
74	N 80°47'5\"	0.84
75	N 80°47'5\"	0.84
76	N 80°47'5\"	0.84
77	N 80°47'5\"	0.84
78	N 80°47'5\"	0.84
79	N 80°47'5\"	0.84
80	N 80°47'5\"	0.84
81	N 80°47'5\"	0.84
82	N 80°47'5\"	0.84
83	N 80°47'5\"	0.84
84	N 80°47'5\"	0.84
85	N 80°47'5\"	0.84
86	N 80°47'5\"	0.84
87	N 80°47'5\"	0.84
88	N 80°47'5\"	0.84
89	N 80°47'5\"	0.84
90	N 80°47'5\"	0.84
91	N 80°47'5\"	0.84
92	N 80°47'5\"	0.84
93	N 80°47'5\"	0.84
94	N 80°47'5\"	0.84
95	N 80°47'5\"	0.84
96	N 80°47'5\"	0.84
97	N 80°47'5\"	0.84
98	N 80°47'5\"	0.84
99	N 80°47'5\"	0.84
100	N 80°47'5\"	0.84

CURVE TABLE

CURVE	BEARING	LENGTH	CHORD BEARING	CHORD LENGTH
C1	N 0°46'37\"	36.00	N 0°46'37\"	36.00
C2	N 2°46'37\"	174.00	N 2°46'37\"	174.00
C3	N 2°46'37\"	18.00	N 2°46'37\"	18.00
C4	N 2°46'37\"	12.00	N 2°46'37\"	12.00
C5	S 2°46'37\"	8.00	S 2°46'37\"	8.00
C6	S 2°46'37\"	163.37	S 2°46'37\"	163.37
C7	N 80°47'5\"	22.42	N 80°47'5\"	22.42
C8	N 80°47'5\"	0.84	N 80°47'5\"	0.84
C9	N 80°47'5\"	198.00	N 80°47'5\"	198.00
C10	N 80°47'5\"	1.00	N 80°47'5\"	1.00
C11	N 80°47'5\"	138.00	N 80°47'5\"	138.00
C12	N 80°47'5\"	13.00	N 80°47'5\"	13.00
C13	N 80°47'5\"	23.00	N 80°47'5\"	23.00
C14	N 80°47'5\"	0.84	N 80°47'5\"	0.84
C15	N 80°47'5\"	0.84	N 80°47'5\"	0.84
C16	N 80°47'5\"	0.84	N 80°47'5\"	0.84
C17	N 80°47'5\"	0.84	N 80°47'5\"	0.84
C18	N 80°47'5\"	0.84	N 80°47'5\"	0.84
C19	N 80°47'5\"	0.84	N 80°47'5\"	0.84
C20	N 80°47'5\"	0.84	N 80°47'5\"	0.84
C21	N 80°47'5\"	0.84	N 80°47'5\"	0.84
C22	N 80°47'5\"	0.84	N 80°47'5\"	0.84
C23	N 80°47'5\"	0.84	N 80°47'5\"	0.84
C24	N 80°47'5\"	0.84	N 80°47'5\"	0.84
C25	N 80°47'5\"	0.84	N 80°47'5\"	0.84
C26	N 80°47'5\"	0.84	N 80°47'5\"	0.84
C27	N 80°47'5\"	0.84	N 80°47'5\"	0.84
C28	N 80°47'5\"	0.84	N 80°47'5\"	0.84
C29	N 80°47'5\"	0.84	N 80°47'5\"	0.84
C30	N 80°47'5\"	0.84	N 80°47'5\"	0.84
C31	N 80°47'5\"	0.84	N 80°47'5\"	0.84
C32	N 80°47'5\"	0.84	N 80°47'5\"	0.84
C33	N 80°47'5\"	0.84	N 80°47'5\"	0.84
C34	N 80°47'5\"	0.84	N 80°47'5\"	0.84
C35	N 80°47'5\"	0.84	N 80°47'5\"	0.84
C36	N 80°47'5\"	0.84	N 80°47'5\"	0.84
C37	N 80°47'5\"	0.84	N 80°47'5\"	0.84
C38	N 80°47'5\"	0.84	N 80°47'5\"	0.84
C39	N 80°47'5\"	0.84	N 80°47'5\"	0.84
C40	N 80°47'5\"	0.84	N 80°47'5\"	0.84
C41	N 80°47'5\"	0.84	N 80°47'5\"	0.84
C42	N 80°47'5\"	0.84	N 80°47'5\"	0.84
C43	N 80°47'5\"	0.84	N 80°47'5\"	0.84
C44	N 80°47'5\"	0.84	N 80°47'5\"	0.84
C45	N 80°47'5\"	0.84	N 80°47'5\"	0.84
C46	N 80°47'5\"	0.84	N 80°47'5\"	0.84
C47	N 80°47'5\"	0.84	N 80°47'5\"	0.84
C48	N 80°47'5\"	0.84	N 80°47'5\"	0.84
C49	N 80°47'5\"	0.84	N 80°47'5\"	0.84
C50	N 80°47'5\"	0.84	N 80°47'5\"	0.84

GMA BARNES - BRYAN ASSOCIATES, INC.
1275 E. Highway 17, Suite 100, Ocala, FL 32067 (904) 236-6666