

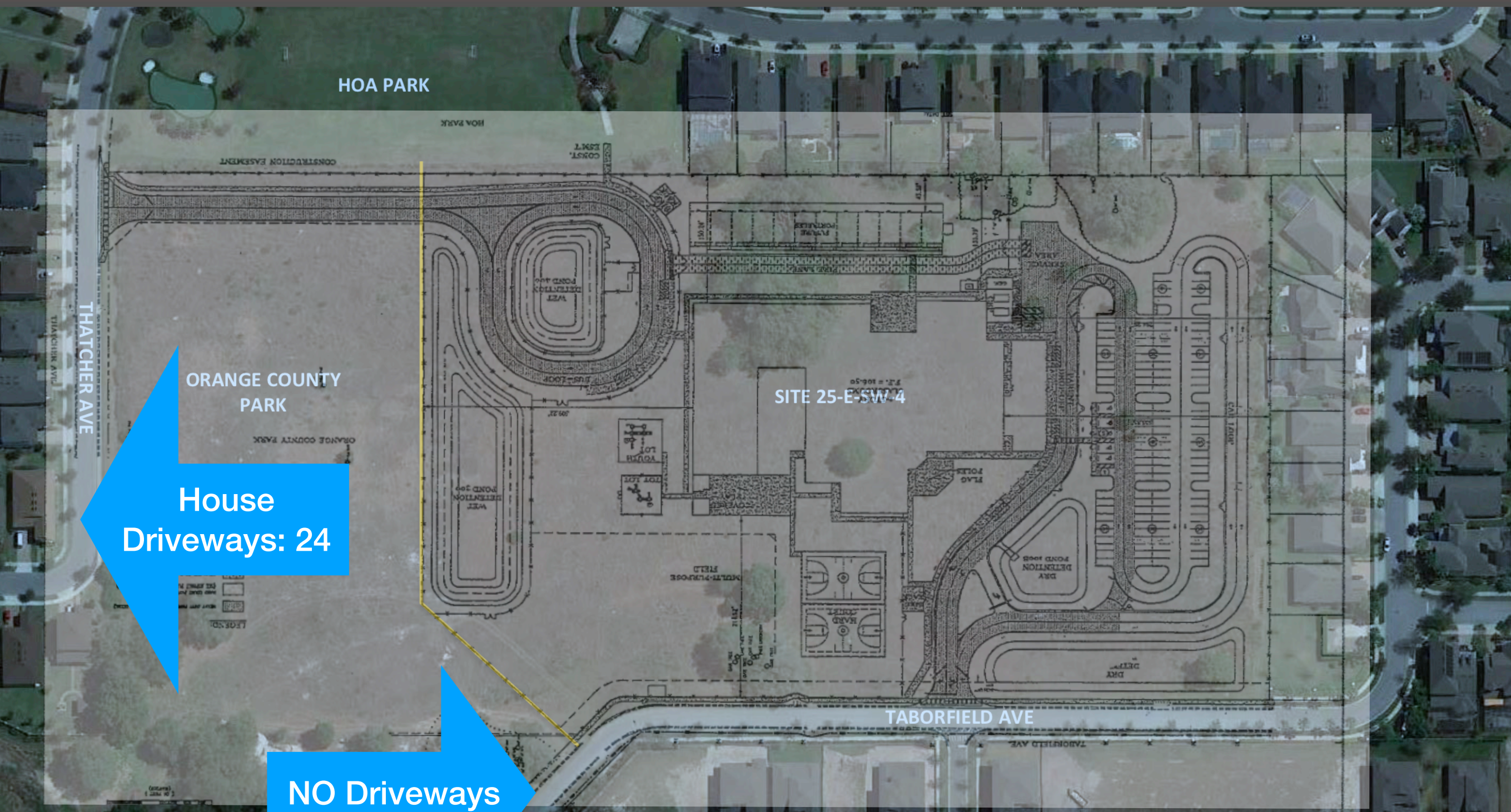


Mabel Bridge HOA

to Orlando Board of County Commissioners:
Please decline proposed easement for Site 25-E-SW-4, in
OCPS District 4 located in OC District 1.



Current State

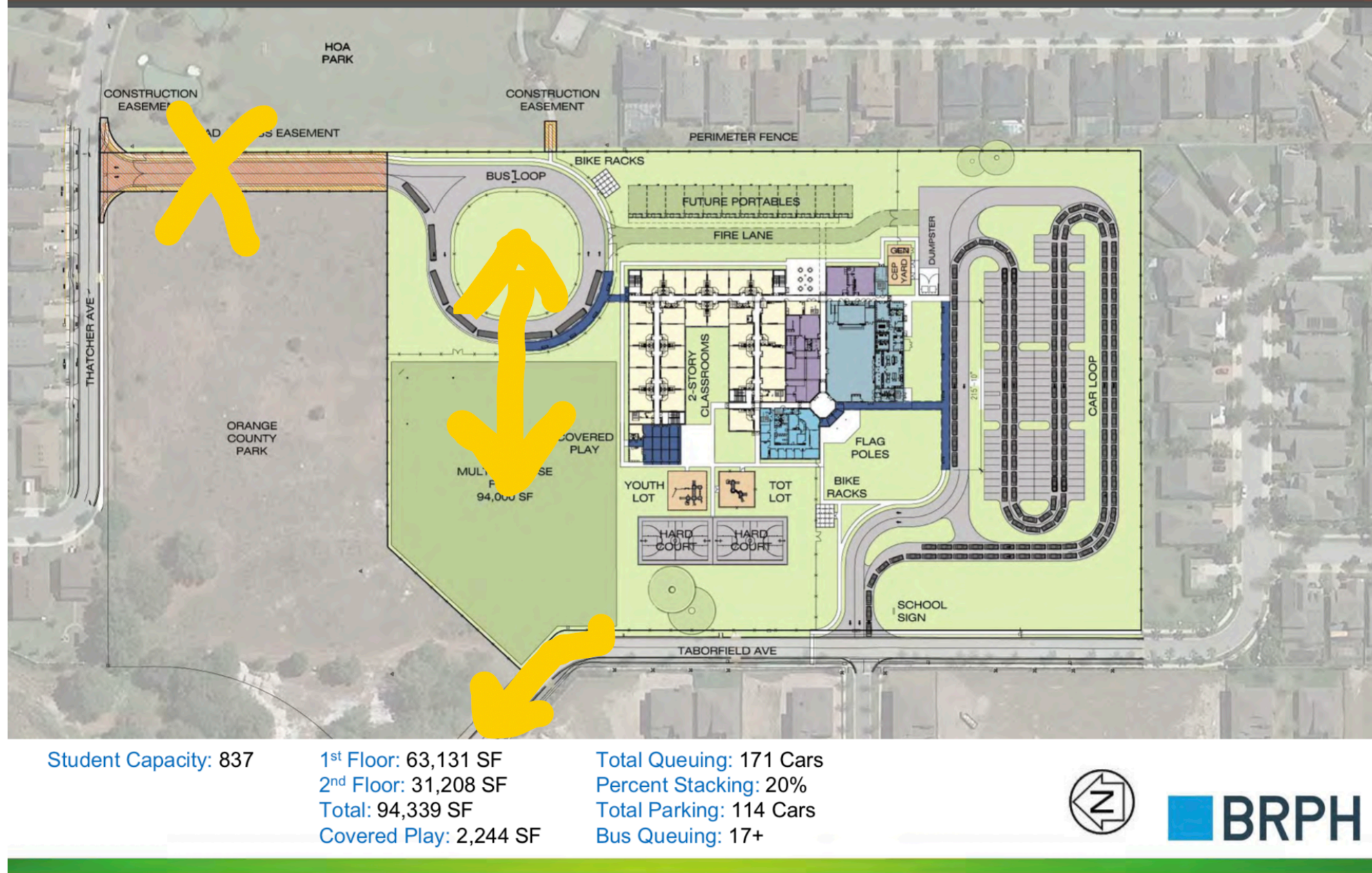


As designed, **17+ school buses** will traverse our neighborhood street (Thatcher Ave) passing **24 driveways** between Chateaubriand and the bus loop on Thatcher Ave. (and a sharp 90 degree turn).

Bus/Driveway Safety Issues in Mabel Bridge:

To bring the school buses along Thatcher Ave., would be to cross 24 driveways of active, occupied homes, presenting numerous problems, including but not limited to:

- Residents back out of driveways (blind spots).
- Singular Bus pick-up for Middle School students are already delayed by landscapers or garbage trucks or residents, as any of the above often render this street a one-way roadway due to the width (or lack of).
- This neighborhood is in the tourist district and residents have cars parked on both sides of the street along Thatcher Ave as a necessity, and vacationing visitors often drive to this location, further filling up the street parking.
- The 90-degree, blind curve on Thatcher Ave. cannot be driven by a large vehicle without that vehicle veering into the oncoming traffic side of the street. It is difficult for buses and garbage and moving trucks, and large SUVs (especially with approved, HOA required trees at the corner).



Since the 60% design meeting (when we first learned of this) we brought our community together with **signed petitions** we presented to the OCPS School Board member, to oppose the planned bus loop location.

We also brought forth the traffic signal warrants, noting that a traffic light would have to be installed at Taborfield and Reams Road. That **traffic light has now been approved** and planned. Yet, OCPS declined, when asked, to do further study on whether or not routing the school buses through a traffic light on a four lane divided road would be safer. Logic suggests it would be safer for a school bus to turn left on a four lane divided road at a traffic light—especially considering 17+ school buses.



By the 100% design meeting, this traffic light had already been announced (Reams Road and Taborfield) at another community event. The OCPS School Board Member and Staff claimed no knowledge that a light at this intersection was guaranteed; therefore they held on their position and would not acknowledge the safety a traffic light would bring for buses on a four-lane road.

Conversation with OCPS Board Member Pam Gould:

At the “100 percent design phase” community meeting hosted by School Board Member Pam Gould, we were able to remind her that this cannot be a 100 percent design if the easement is not granted, and she admitted that is true.

Pressed further, she conceded that **the School Board has no plans to consider our neighborhood petitions and logical, safety-focused requests:**

“This is solidified. If the county asks for something different, that would be a different story,” Gould said at the meeting.

We ask that the BCC **please decline the easement**. Please **ask the School Board to come back with “something different,”** a safer, second design option that takes advantage of the planned traffic light at Reams and Taborfield, as this was not considered or acknowledged by the School Board at any point in the planning; therefore, all of the School Board traffic studies for the buses are **outdated and not properly conclusive on safety issues.**

HOA PARK

ORANGE COUNTY PARK

SITE 25-E-SW-4

TABORFIELD AVE

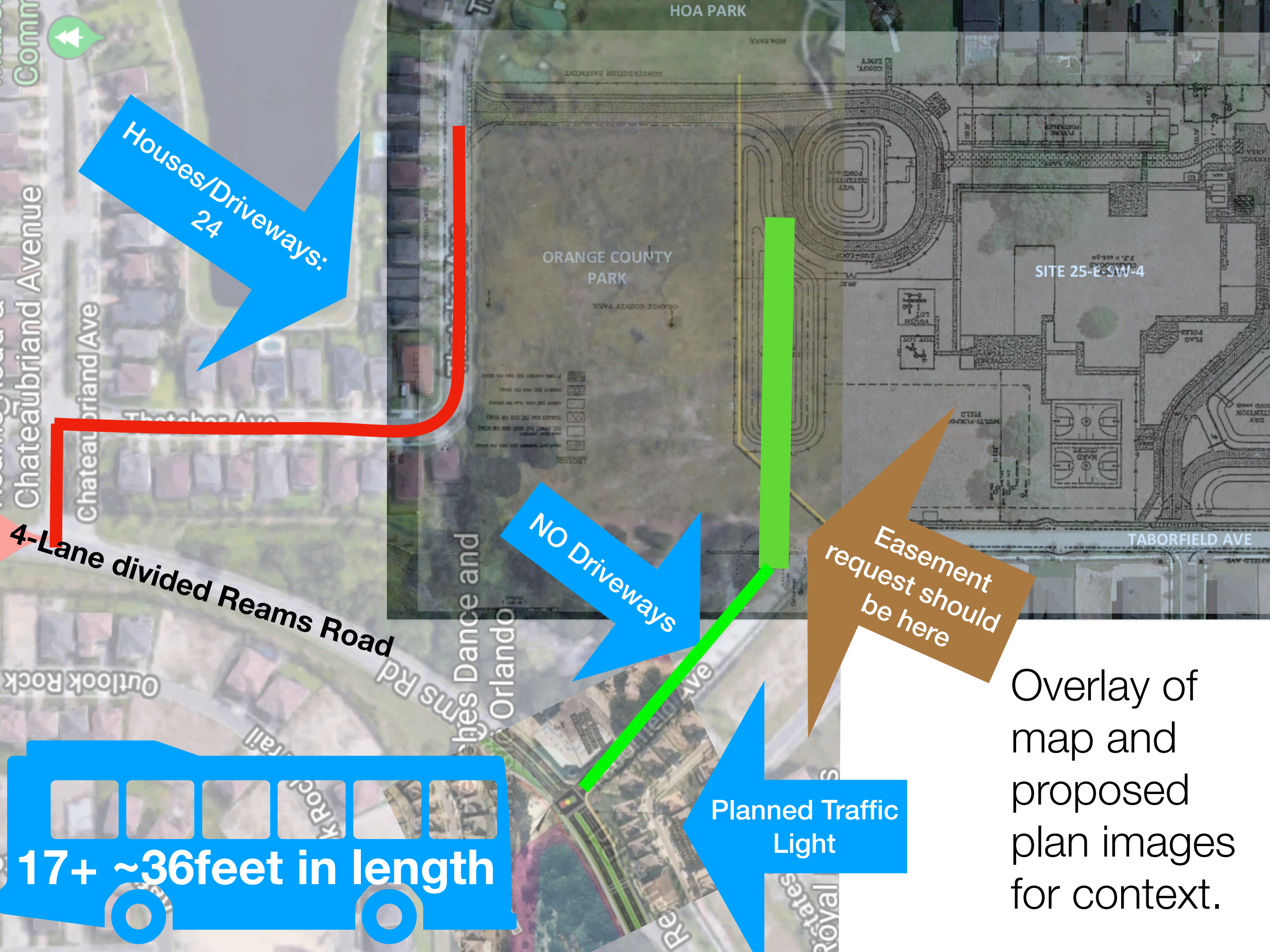
THATCHER AVE

Houses/
Driveways: 24

NO Driveways

Planned Traffic
Light

Please ask for a new traffic study on the school bus safety at this light vs. the awkward intersection into Mabel Bridge.



Houses/Driveways:
24

NO Driveways

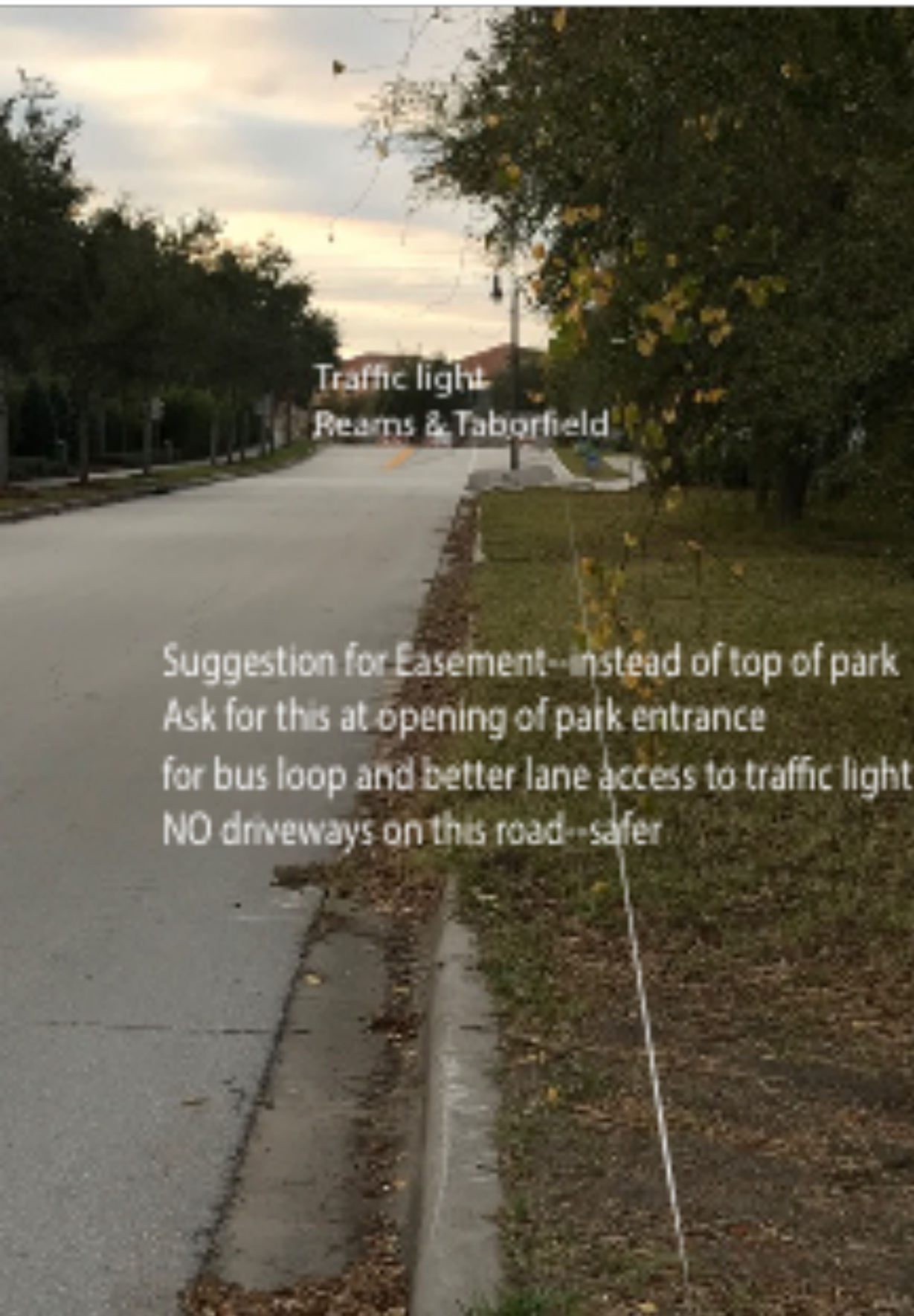
Easement
request should
be here

Planned Traffic
Light

17+ ~36feet in length

Overlay of
map and
proposed
plan images
for context.

We suggested OCPS ask for easement here instead—Taborfield.



**(above) Example of cars legally parked.
How will buses pass through safely?**



Conclusion:

Mabel Bridge subdivision has provided petitions with signatures from **107 residents of Mabel Bridge in Orange County demanding no school traffic for Site 25-E-SW-4 Elementary School.**

(copies provided to Commissioner VanderLey and OCPS Board Member Pam Gould)

Petition Language:

Mabel Bridge Petition to Orange County Public Schools regarding Site 25-E-SW-4 Elementary School

Orange County Public Schools (OCPS) has presented a design for Site 25-E-SW-4 Elementary School that includes a bus entrance within Mabel Bridge Subdivision on Thatcher Ave, and a bus loop that is adjacent to homes and common grounds/amenities. Bus traffic is planned to be routed through Mabel Bridge. This creates a safety and traffic problem for the residents of Mabel Bridge.

We, the homeowners and/or residents of Mabel Bridge subdivision, demand there be NO school traffic (cars or buses) routed through Mabel Bridge Subdivision, and demand repositioning the proposed bus loop location and planned routing for buses to Site 25-E-SW-4 Elementary School.