



Interoffice Memorandum

March 30, 2018

TO: Mayor Teresa Jacobs
and Board of County Commissioners

FROM: Mark V. Massaro, P.E., Director, Public Works Department

CONTACT PERSON: Christine N. Lofye, P. E., Manager
Traffic Engineering Division

PHONE NUMBER: (407) 836-7890

SUBJ: **Installation of Traffic Control Devices and "No Parking" signs in Waterleigh Phase 2A**

Our staff recommends that the following traffic control devices be installed in Waterleigh Phase 2A:

Install "STOP" signs on:

Waterway Passage Drive at Avalon Road
Waterway Passage Drive at Pebble Bluff Loop
Pebble Bluff Loop at Atwater Bay Drive
Spring Shores Drive at Turning Tide Way
Waterway Passage Drive at Turning Tide Way
Turning Tide Way at Atwater Bay Drive
Pebble Bluff Loop at Waterway Passage Drive
Waterway Passage Drive at Pebble Bluff Loop
Pebble Bluff Loop at Atwater Bay Drive
Shallow Water Drive at Pebble Bluff Loop
Waterway Passage Drive at Pebble Bluff Loop
Turning Tide Way at Pebble Bluff Loop
Waterway Passage Drive at Turning Tide Way
Spring Shores Drive at Pebble Bluff Loop
Meadow Brook Drive at Pebble Bluff Loop
Spring Shores Drive at Pebble Bluff Loop
Meadow Brook Drive at Atwater Bay Drive
Spring Shores Drive at Atwater Bay Drive
Atwater Bay Drive at Atwater Bay Drive

The Fire Marshal recommends that the following "No Parking" signs be installed in Waterleigh Phase 2A:

Install "NO PARKING" signs on:

Atwater Bay Drive
Pebble Bluff Loop
Waterway Passage Drive
Shallow Water Drive
Turning Tide Way
Spring Shores Drive
Meadow Brook Drive

Action Requested: Approval of Traffic Control Devices and "No Parking" signs installation in Waterleigh Phase 2A. District 1.

MVM/CNL/AHW/nad
Attachments

WATERELIGH PHASE 2A
LYING IN SECTIONS 7 and 8, TOWNSHIP 24 SOUTH, RANGE 27 EAST,
ORANGE COUNTY, FLORIDA
DISTRICT # 1

STOP/STREET

<u>(1)</u>	(Ft W)	on Waterway Passage Drive (9 inch) at Avalon Road (9 inch)	10000 10500
<u>(2)</u>	(Ft S)	on Waterway Passage Drive at Pebble Bluff Loop	9700 16000
<u>(3)</u>	(Ft W)	on Pebble Bluff Loop at Atwater Bay Drive	16000 10400
<u>(4)</u>	(Ft S)	on Spring Shores Drive at Turning Tide Way	10100 16300
<u>(5)</u>	(Ft S)	on Waterway Passage Drive at Turning Tide Way	9700 16300
<u>(6)</u>	(Ft W)	on Turning Tide Way at Atwater Bay Drive	16200 10400
<u>(7)</u>	(Ft N)	on Pebble Bluff Loop at Waterway Passage Drive	(stop only)
<u>(8)</u>	(Ft E)	on Waterway Passage Drive at Pebble Bluff Loop	9600 16200
<u>(9)</u>	(Ft W)	on Pebble Bluff Loop at Atwater Bay Drive	16300 10300
<u>(10)</u>	(Ft N)	on Shallow Water Drive at Pebble Bluff Loop	10200 16200
<u>(11)</u>	(Ft N)	on Waterway Passage Drive at Pebble Bluff Loop	(stop only)
<u>(12)</u>	(Ft S)	on Turning Tide Way at Pebble Bluff Loop	16400 16200
<u>(13)</u>	(Ft N)	on Waterway Passage Drive at Turning Tide Way	(stop only)
<u>(14)</u>	(Ft N)	on Spring Shores Drive at Pebble Bluff Loop	(stop only)
<u>(15)</u>	(Ft S)	on Meadow Brook Drive at Pebble Bluff Loop	10200 16100



PUBLIC WORKS DEPARTMENT

JOSEPH C. KUNKEL, P.E., Deputy Director

4200 South John Young Parkway • Orlando, Florida 32839-9205

407-836-7972 • Fax 407-836-7766

e-mail: Joe.Kunkel@ocfl.net

September 6, 2017

ORANGE COUNTY

SEP 12 2017

TRAFFIC ENGINEERING

Mr. Chad Childs
D.R. Horton, Inc.
6200 Lee Vista Boulevard, Suite 200
Orlando, Florida 32822

**Subject: Issuance of Certificate of Completion
Waterleigh PD Phase 2A**

Dear Mr. Childs:

This letter verifies that on August 25, 2017 the County Engineer issued a Certificate of Completion for the construction of Waterleigh PD Phase 2A, Plat Book 92, Pages 06-16, Orange County Records.

Please be advised that this certificate does not relieve the developer of responsibility for the materials, workmanship, structural integrity, functioning, and maintenance of the required public improvements during the one (1) year period following issuance of the Certificate of Completion, or at the time the County Engineer issues the Approval for Maintenance.

Sincerely,

A handwritten signature in black ink, appearing to read "Joe C Kunkel".

Joseph C. Kunkel, P.E.

JCK/sa

Enclosure

cc: Robert Dudas, Utilities Distribution Section Manager
Jorge Reyes, Utilities Supervisor, Field Services Division
Brian Matejcek, Project Manager, Field Services Division
County Surveyor, Survey Section, Public Works Engineering Division
✓ Arthur Woods, Traffic Engineering Division
Maricela Torres, Roads and Drainage Division
George Shupp, Roads and Drainage Division (As-Built)
Mirian Haughee, Stormwater Management Division
Engineer of Record
SJR/SF Water Management District

DATE August 25, 2017

DISTRICT 1

CERTIFICATE OF COMPLETION

THIS IS TO CERTIFY THAT THE FACILITIES CONSTRUCTED BY:

DEVELOPER: DR Horton; Attn. Mr. Chad Childs

ADDRESS: 6200 Lee Vista Boulevard, Suite 200, Orlando, Florida

IN THE DEVELOPMENT OF: Waterleigh PD Phase 2A

PROJECT NUMBER: 16-S-022

S-T-R 07-24-27

AS RECORDED IN PLAT BOOK 92, PAGES 06-16, ORANGE COUNTY RECORDS HAVE BEEN COMPLETED IN FORM AND MANNER ACCEPTABLE FOR FUTURE MAINTENANCE BY ORANGE COUNTY, FLORIDA.

CONTRACTOR: Briar Team

FACILITIES AND IMPROVEMENTS COMPLETE

REQUIRED DOCUMENTS

YES	NOT REQUIRED		YES	NOT REQUIRED	
X		STREETS	X		ENGINEER CERTIFICATION
X		DRAINAGE FACILITIES	X		SURVEYOR CERTIFICATION
X		WATER SYSTEM		X	LETTER OF CREDIT
X		SANITARY SYSTEM	X		CASH GUARANTEE
X		RECLAIMED WATER SYSTEM	X		"AS-BUILT" DRAWINGS
	X	EXTERNAL SIDEWALKS		X	APPROVAL OF AUDIO-OVERRIDE DEVICE
	X	SCREENING	X		RETENTION POND MAINTENANCE GUARANTEE
X		ELECTRICAL SERVICE		X	UNDERDRAIN CERTIFICATION AND PERFORMANCE GUARANTEE
	X	UNDERDRAINS	X		CERTIFIED UTILITY COST AND "BILL OF SALE"
X		ENVIRONMENTAL SWALES	X		PAYMENT FOR STREET AND TRAFFIC SIGNS
			X		VALUE OF TRANSFERRED PROPERTY FORM

ROADWAY CATEGORY

New Construction

Lane Miles

Roadway Type

<input type="checkbox"/>	Arterial
<input type="checkbox"/>	Collector
<input checked="" type="checkbox"/>	Subdivision (local)
<input type="checkbox"/>	Alternative Surface

	Single lane miles
	Single lane miles
4.78	Single lane miles
	Single lane miles

<input type="checkbox"/>	Private
<input type="checkbox"/>	Private
<input type="checkbox"/>	Private
<input type="checkbox"/>	Private

<input type="checkbox"/>	Public
<input type="checkbox"/>	Public
<input checked="" type="checkbox"/>	Public
<input type="checkbox"/>	Public

4.78 TOTAL LANE MILES

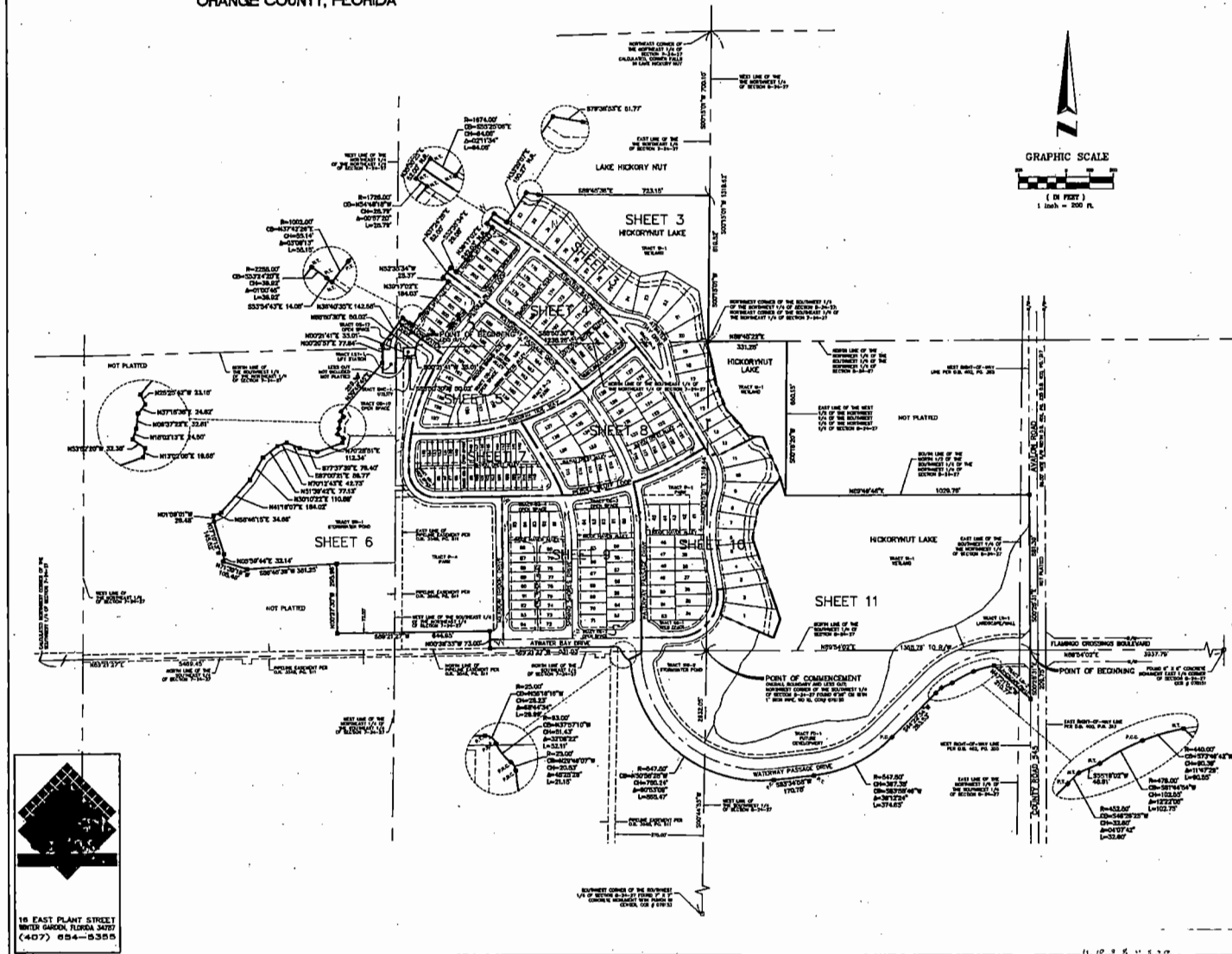

SENIOR INSPECTOR

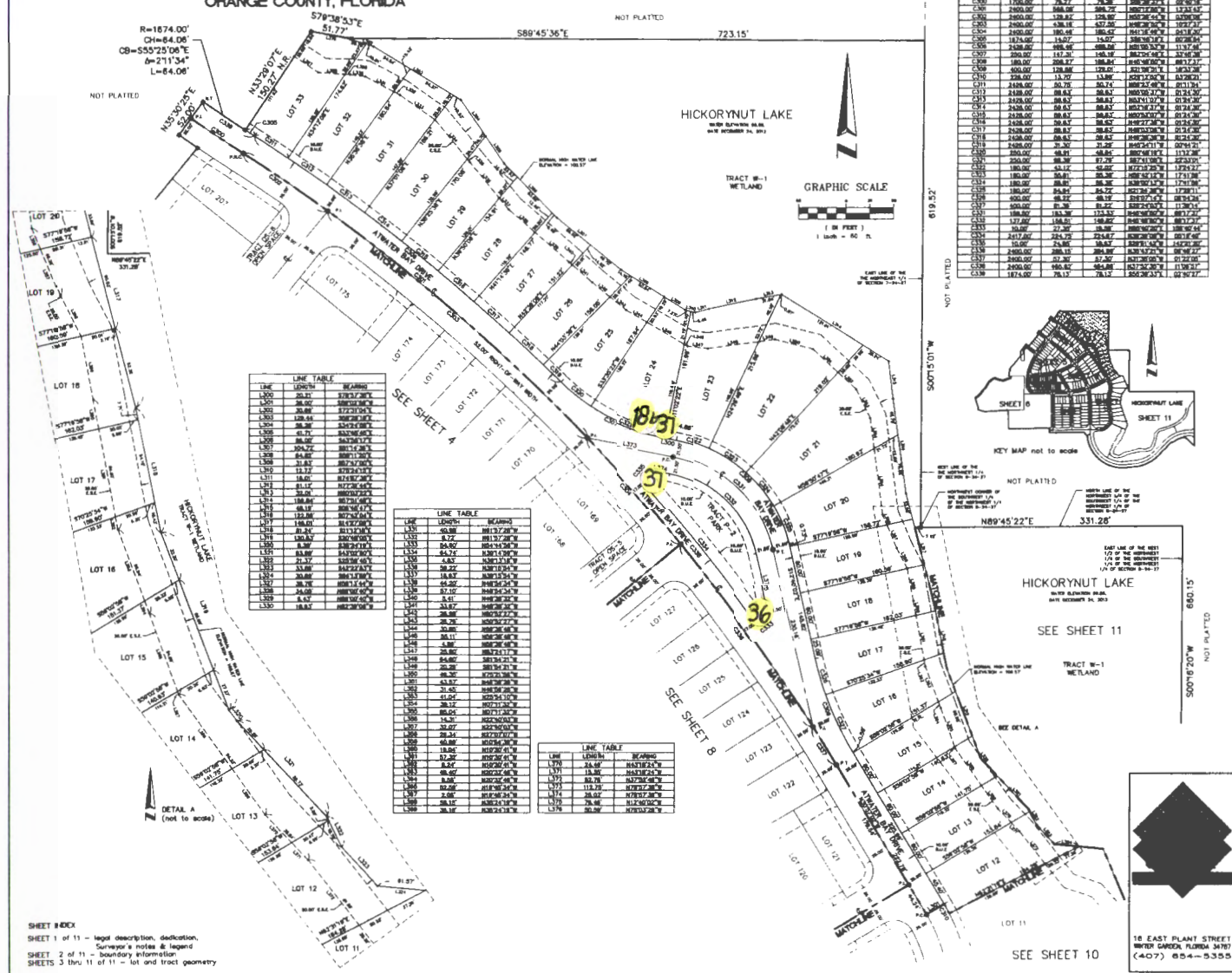

MANAGER, DEVELOPMENT ENGINEERING


CHIEF ENGINEER


COUNTY ENGINEER, PUBLIC WORKS

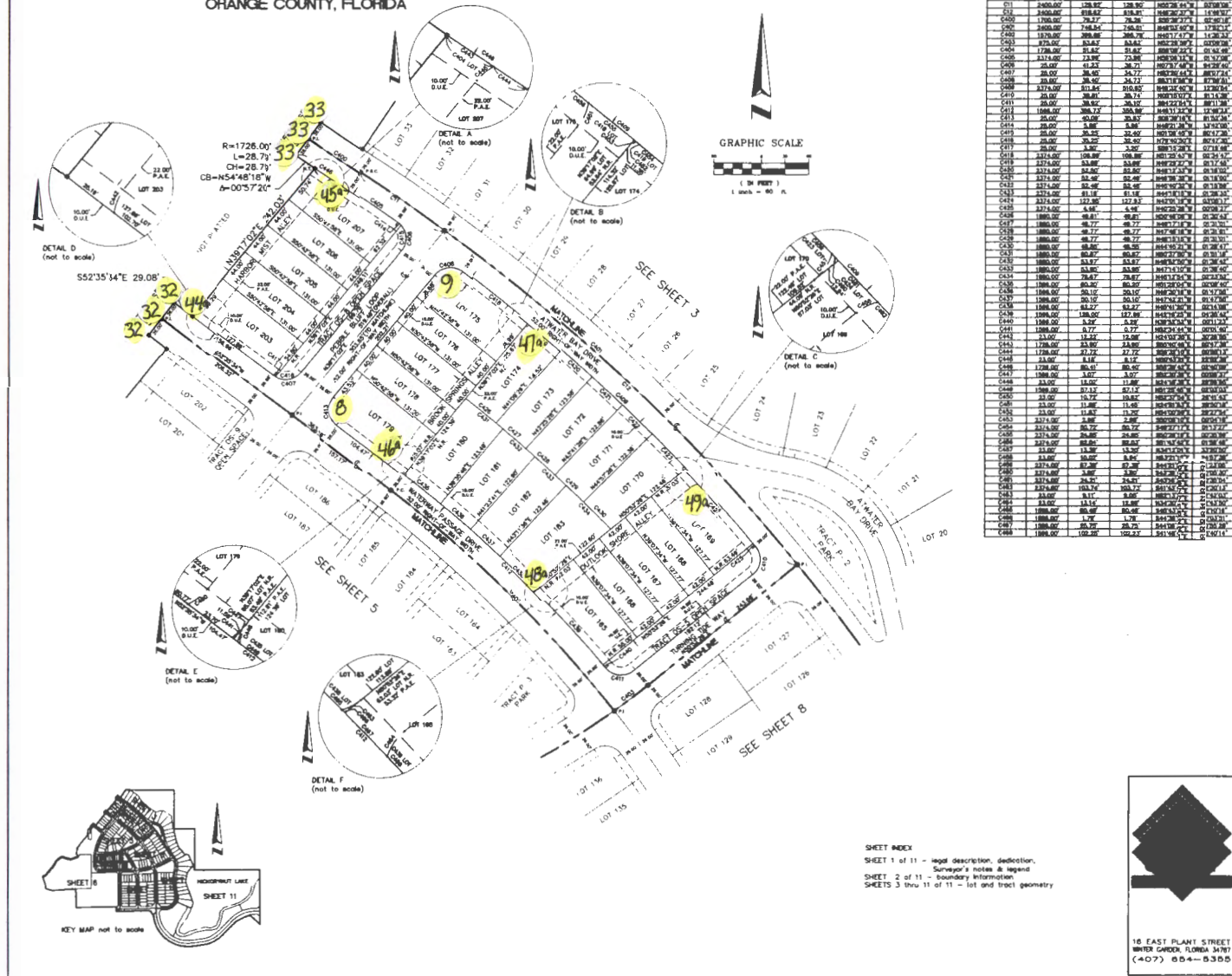
WATERLEIGH PHASE 2A
 LYING IN SECTIONS 7 AND 8, TOWNSHIP 24 SOUTH, RANGE 27 EAST,
 ORANGE COUNTY, FLORIDA





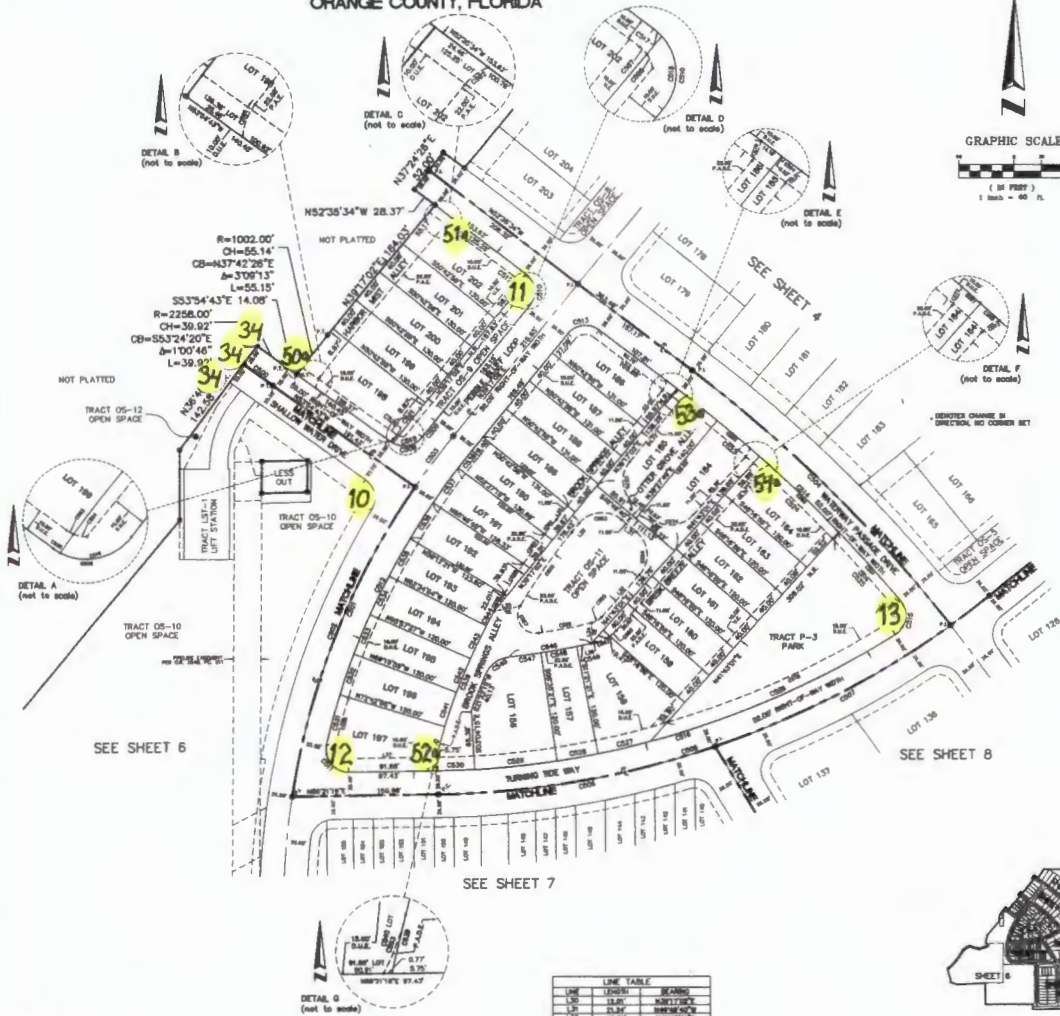
WATERLEIGH PHASE 2A LYING IN SECTIONS 7 AND 8, TOWNSHIP 24 SOUTH, RANGE 27 EAST, ORANGE COUNTY, FLORIDA

SHEET 4 OF 11

PLAT BOOK **92** PAGE **09**

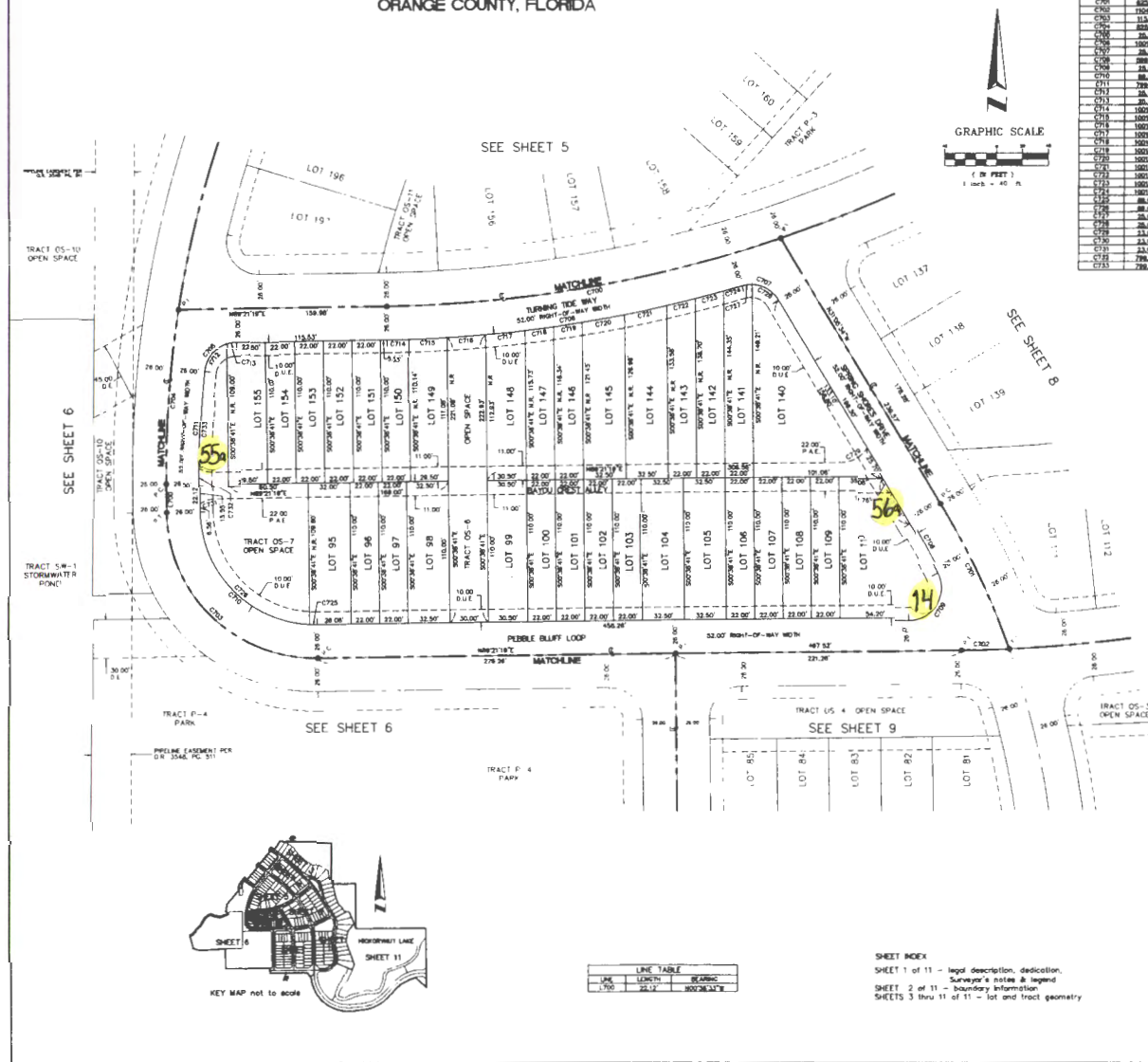
WATERLEIGH PHASE 2A LYING IN SECTIONS 7 AND 8, TOWNSHIP 24 SOUTH, RANGE 27 EAST, ORANGE COUNTY, FLORIDA

SHEET 5 OF 11 PLAT BOOK **92** PAGE **10**



SHEET INDEX
 SHEET 1 of 11 - legal description, dedication,
 Surveyor's notes & legend
 SHEET 2 of 11 - boundary information
 SHEETS 3 thru 11 of 11 - lot and tract geometry

LINE TABLE		
LINE	LENGTH	BEARING
1-2	12.81	S89°11'17"E
2-3	12.81	S89°11'17"E
3-4	12.81	S89°11'17"E
4-5	12.81	S89°11'17"E
5-6	12.81	S89°11'17"E
6-7	12.81	S89°11'17"E
7-8	12.81	S89°11'17"E
8-9	12.81	S89°11'17"E
9-10	12.81	S89°11'17"E
10-11	12.81	S89°11'17"E
11-12	12.81	S89°11'17"E
12-13	12.81	S89°11'17"E
13-14	12.81	S89°11'17"E
14-15	12.81	S89°11'17"E
15-16	12.81	S89°11'17"E
16-17	12.81	S89°11'17"E
17-18	12.81	S89°11'17"E
18-19	12.81	S89°11'17"E
19-20	12.81	S89°11'17"E
20-21	12.81	S89°11'17"E
21-22	12.81	S89°11'17"E
22-23	12.81	S89°11'17"E
23-24	12.81	S89°11'17"E
24-25	12.81	S89°11'17"E
25-26	12.81	S89°11'17"E
26-27	12.81	S89°11'17"E
27-28	12.81	S89°11'17"E
28-29	12.81	S89°11'17"E
29-30	12.81	S89°11'17"E
30-31	12.81	S89°11'17"E
31-32	12.81	S89°11'17"E
32-33	12.81	S89°11'17"E
33-34	12.81	S89°11'17"E
34-35	12.81	S89°11'17"E
35-36	12.81	S89°11'17"E
36-37	12.81	S89°11'17"E
37-38	12.81	S89°11'17"E
38-39	12.81	S89°11'17"E
39-40	12.81	S89°11'17"E
40-41	12.81	S89°11'17"E
41-42	12.81	S89°11'17"E
42-43	12.81	S89°11'17"E
43-44	12.81	S89°11'17"E
44-45	12.81	S89°11'17"E
45-46	12.81	S89°11'17"E
46-47	12.81	S89°11'17"E
47-48	12.81	S89°11'17"E
48-49	12.81	S89°11'17"E
49-50	12.81	S89°11'17"E
50-51	12.81	S89°11'17"E
51-52	12.81	S89°11'17"E
52-53	12.81	S89°11'17"E
53-54	12.81	S89°11'17"E
54-55	12.81	S89°11'17"E
55-56	12.81	S89°11'17"E
56-57	12.81	S89°11'17"E
57-58	12.81	S89°11'17"E
58-59	12.81	S89°11'17"E
59-60	12.81	S89°11'17"E
60-61	12.81	S89°11'17"E
61-62	12.81	S89°11'17"E
62-63	12.81	S89°11'17"E
63-64	12.81	S89°11'17"E
64-65	12.81	S89°11'17"E
65-66	12.81	S89°11'17"E
66-67	12.81	S89°11'17"E
67-68	12.81	S89°11'17"E
68-69	12.81	S89°11'17"E
69-70	12.81	S89°11'17"E
70-71	12.81	S89°11'17"E
71-72	12.81	S89°11'17"E
72-73	12.81	S89°11'17"E
73-74	12.81	S89°11'17"E
74-75	12.81	S89°11'17"E
75-76	12.81	S89°11'17"E
76-77	12.81	S89°11'17"E
77-78	12.81	S89°11'17"E
78-79	12.81	S89°11'17"E
79-80	12.81	S89°11'17"E
80-81	12.81	S89°11'17"E
81-82	12.81	S89°11'17"E
82-83	12.81	S89°11'17"E
83-84	12.81	S89°11'17"E
84-85	12.81	S89°11'17"E
85-86	12.81	S89°11'17"E
86-87	12.81	S89°11'17"E
87-88	12.81	S89°11'17"E
88-89	12.81	S89°11'17"E
89-90	12.81	S89°11'17"E
90-91	12.81	S89°11'17"E
91-92	12.81	S89°11'17"E
92-93	12.81	S89°11'17"E
93-94	12.81	S89°11'17"E
94-95	12.81	S89°11'17"E
95-96	12.81	S89°11'17"E
96-97	12.81	S89°11'17"E
97-98	12.81	S89°11'17"E
98-99	12.81	S89°11'17"E
99-100	12.81	S89°11'17"E
100-101	12.81	S89°11'17"E
101-102	12.81	S89°11'17"E
102-103	12.81	S89°11'17"E
103-104	12.81	S89°11'17"E
104-105	12.81	S89°11'17"E
105-106	12.81	S89°11'17"E
106-107	12.81	S89°11'17"E
107-108	12.81	S89°11'17"E
108-109	12.81	S89°11'17"E
109-110	12.81	S89°11'17"E
110-111	12.81	S89°11'17"E
111-112	12.81	S89°11'17"E
112-113	12.81	S89°11'17"E
113-114	12.81	S89°11'17"E
114-115	12.81	S89°11'17"E
115-116	12.81	S89°11'17"E
116-117	12.81	S89°11'17"E
117-118	12.81	S89°11'17"E
118-119	12.81	S89°11'17"E
119-120	12.81	S89°11'17"E
120-121	12.81	S89°11'17"E
121-122	12.81	S89°11'17"E
122-123	12.81	S89°11'17"E
123-124	12.81	S89°11'17"E
124-125	12.81	S89°11'17"E
125-126	12.81	S89°11'17"E
126-127	12.81	S89°11'17"E
127-128	12.81	S89°11'17"E
128-129	12.81	S89°11'17"E
129-130	12.81	S89°11'17"E
130-131	12.81	S89°11'17"E
131-132	12.81	S89°11'17"E
132-133	12.81	S89°11'17"E
133-134	12.81	S89°11'17"E
134-135	12.81	S89°11'17"E
135-136	12.81	S89°11'17"E
136-137	12.81	S89°11'17"E
137-138	12.81	S89°11'17"E
138-139	12.81	S89°11'17"E
139-140	12.81	S89°11'17"E
140-141	12.81	S89°11'17"E
141-142	12.81	S89°11'17"E
142-143	12.81	S89°11'17"E
143-144	12.81	S89°11'17"E
144-145	12.81	S89°11'17"E
145-146	12.81	S89°11'17"E
146-147	12.81	S89°11'17"E
147-148	12.81	S89°11'17"E
148-149	12.81	S89°11'17"E
149-150	12.81	S89°11'17"E
150-151	12.81	S89°11'17"E
151-152	12.81	S89°11'17"E
152-153	12.81	S89°11'17"E
153-154	12.81	S89°11'17"E
154-155	12.81	S89°11'17"E
155-156	12.81	S89°11'17"E
156-157	12.81	S89°11'17"E
157-158	12.81	S89°11'17"E
158-159	12.81	S89°11'17"E
159-160	12.81	S89°11'17"E
160-161	12.81	S89°11'17"E
161-162	12.81	S89°11'17"E
162-163	12.81	S89°11'17"E
163-164	12.81	S89°11'17"E
164-165	12.81	S89°11'17"E
165-166	12.81	S89°11'17"E
166-167	12.81	S89°11'17"E
167-168	12.81	S89°11'17"E
168-169	12.81	S89°11'17"E
169-170	12.81	S89°11'17"E
170-171	12.81	S89°11'17"E
171-172	12.81	S89°11'17"E
172-173	12.81	S89°11'17"E
173-174	12.81	S89°11'17"E
174-175	12.81	S89°11'17"E
175-176	12.81	S89°11'17"E
176-177	12.81	S89°11'17"E
177-178	12.81	S89°11'17"E
178-179	12.81	S89°11'17"E
179-180	12.81	S89°11'17"E
180-181	12.81	S89°11'17"E
181-182	12.81	S89°11'17"E
182-183	12.81	S89°11'17"E
183-184	12.81	S89°11'17"E
184-185	12.81	S89°11'17"E
185-186	12.81	S89°11'17"E
186-187	12.81	S89°11'17"E
187-188	12.81	S89°11'17"E
188-189	12.81	S89°11'17"E
189-190	12.81	S89°11'17"E
190-191	12.81	S89°11'17"E
191-192	12.81	S89°11'17"E
192-193	12.81	S89°11'17"E
193-194	12.81	S89°11'17"E
194-195	12.81	S89°11'17"E
195-196	12.81	S89°11'17"E
196-197	12.81	S89°11'17"E
197-198	12.81	S89°11'17"E
198-199	12.81	S89°11'17"E
199-200	12.81	S89°11'17"E
200-201	12.81	S89°11'17"E
201-202	12.81	S89°11'17"E
202-203	12.81	S89°11'17"E
203-204	12.81	S89°11'17"E
204-205	12.81	S89°11'17"E
205-206	12.81	S89°11'17"E
206-207	12.81	S89°11'17"E
207-208	12.81	S89°11'17"E
208-209	12.81	S89°11'17"E
209-210	12.81	S89°11'17"E
210-211	12.81	S89°11'17"E
211-212	12.81	S89°11'17"E
212-213	12.81	S89°11'17"E
213-214	12.81	S89°11'17"E
214-215	12.81	S89°11'17"E
215-216	12.81	S89°11'17"E
216-217	12.81	S89°11'17"E
217-218	12.81	S89°11'17"E
218-219	12.81	S89°11'17"E
219-220	12.81	S89°11'17"E
220-221	12.81	S89°11'17"E
221-222	12.81	S89°11'17"E
222-223	12.81	S89°11'17"E
223-224	12.81	S89°11'17"E
224-225	12.81	S89°11'17"E
225-226	12.81	S89°11'17"E
226-227	12.81	S89°11'17"E
227-228	12.81	S89°11'17"E
228-229	12.81	S89°11'17"E
229-230	12.81	S89°11'17"E
230-231	12.81	S89°11'17"E
231-232	12.81	S89°11'17"E
232-233	12.81	S89°11'17"E
233-234	12.81	S89°11'17"E
234-235	12.81	S89°11'17"E
235-236	12.81	S89°11'17"E
236-237	12.81	S89°11'17"E
237-238	12.81	S89°11'17"E
238-239	12.81	S89°11'17"E
239-240	12.81	S89°11'17"E
240-241	12.81	S89°11'17"E
241-242	12.81	S89°11'17"E
242-243	12.81	S89°11'17"E
243-244	12.81	S89°11'17"E
244-245	12.81	S89°11'17"E
245-246	12.81	S89°11'17"E
246-247	12.81	S89°11'17"E
247-248	12.81	S89°11'17"E
248-249	12.81	S89°11'17"E
249-250	12.81	S89°11'17"E
250-251	12.81	S89°11'17"E
251-252	12.81	S89°11'17"E
252-253	12.81	S89°11'17"E
253-254	12.81	S89°11'17"E
254-255	12.81	S89°11'17"E
255-256	12.81	S89°11'17"E
256-257	12.81	S89°11'17"E
257-258	12.81	S89°11'17"E
258-259	12.81	S89°11'17"E
259-260	12.81	S89°11'17"E
260-261	12.81	S89°11'17"E
261-262	12.81	S89°11'17"E
262-263	12.81	S89°11'17"E
263-264	12.81	S89°11'17"E
264-265	12.81	S89°11'17"E
265-266	12.81	S89°11'17"E
266-267	12.81	S89°11'17"E
267-268	12.81	S89°11'17"E
268-269	12.81	S89°11'17"E
269-270	12.81	S89°11'17"E
270-271	12.81	S89°11'17"E
271-272	12.81	S89°11'17"E
272-273	12.81	S89°11'17"E
273-274	12.81	S89°11'17"E
274-275	12.81	S89°11'17"E
275-276	12.81	S89°11'17"E
276-277	12.81	S89°11'17"E
277-278	12.81	S89°11'17"E
278-279	12.81	S89°11'17"E
279-280	12.81	S89°11'17"E
280-281	12.81	S89°11'17"E
281-282	12.81	S89°11'17"E
282-283	12.81	S89°11'17"E
283-284	12.81	S89°11'17"E
284-285	12.81	S89°11'17"E
285-286	12.81	S89°11'17"E
286-287	12.81	S89°11'17"E
287-288	12.81	S89°11'17"E
288-289	12.81	S89°11'17"E
289-290	12.81	S89°11'17"E
290-291	12.81	S89°11'17"E
291-292	12.81	S89°11'17"E
292-293	12.81	S89°11'17"E
293-294	12.81	S89°11'17"E
294-295	12.81	S89°11'17"E
295-296	12.81	S89°11'17"E
296-297	12.81	S89°11'17"E
297-298	12.81	S89°11'17"E
298-299	12.81	S89°11'17"E
299-300	12.81	S89°11'17"E
300-301	12.81	S89°11'17"E
301-302	12.81	S89°11'17"E
302-303	12.81	S89°11'17"E
303-304	12.81	S89°11'17"E
304-305	12.81	S89°11'17"E
305-306	12.81	S89°11'17"E
306-307	12.81	S89°11'17"E
307-308	12.81	S89°11'17"E
308-309	12.81	S89°11'17"E
309-310	12.81	S89°11'17"E
310-311	12.81	S89°11'17"E
311-312	12.81	S89°11'17"E
312-313	12.81	S89°11'17"E
313-314	12.81	S89°11'17"E
314-315	12.81	S89°11'17"E



CURVE	CURVE TABLE			
	LENGTH	AREA	PERIMETER	SECT.
C300	875.00	363.39	1055.97	10.13
C310	825.00	126.25	1055.97	10.13
C320	775.00	126.25	1055.97	10.13
C330	725.00	126.25	1055.97	10.13
C340	675.00	126.25	1055.97	10.13
C350	625.00	126.25	1055.97	10.13
C360	575.00	126.25	1055.97	10.13
C370	525.00	126.25	1055.97	10.13
C380	475.00	126.25	1055.97	10.13
C390	425.00	126.25	1055.97	10.13
C400	375.00	126.25	1055.97	10.13
C410	325.00	126.25	1055.97	10.13
C420	275.00	126.25	1055.97	10.13
C430	225.00	126.25	1055.97	10.13
C440	175.00	126.25	1055.97	10.13
C450	125.00	126.25	1055.97	10.13
C460	75.00	126.25	1055.97	10.13
C470	25.00	126.25	1055.97	10.13
C480	0.00	126.25	1055.97	10.13
C490	0.00	126.25	1055.97	10.13
C500	0.00	126.25	1055.97	10.13
C510	0.00	126.25	1055.97	10.13
C520	0.00	126.25	1055.97	10.13
C530	0.00	126.25	1055.97	10.13
C540	0.00	126.25	1055.97	10.13
C550	0.00	126.25	1055.97	10.13
C560	0.00	126.25	1055.97	10.13
C570	0.00	126.25	1055.97	10.13
C580	0.00	126.25	1055.97	10.13
C590	0.00	126.25	1055.97	10.13
C600	0.00	126.25	1055.97	10.13
C610	0.00	126.25	1055.97	10.13
C620	0.00	126.25	1055.97	10.13
C630	0.00	126.25	1055.97	10.13
C640	0.00	126.25	1055.97	10.13
C650	0.00	126.25	1055.97	10.13
C660	0.00	126.25	1055.97	10.13
C670	0.00	126.25	1055.97	10.13
C680	0.00	126.25	1055.97	10.13
C690	0.00	126.25	1055.97	10.13
C700	0.00	126.25	1055.97	10.13
C710	0.00	126.25	1055.97	10.13
C720	0.00	126.25	1055.97	10.13
C730	0.00	126.25	1055.97	10.13
C740	0.00	126.25	1055.97	10.13
C750	0.00	126.25	1055.97	10.13
C760	0.00	126.25	1055.97	10.13
C770	0.00	126.25	1055.97	10.13
C780	0.00	126.25	1055.97	10.13
C790	0.00	126.25	1055.97	10.13
C800	0.00	126.25	1055.97	10.13
C810	0.00	126.25	1055.97	10.13
C820	0.00	126.25	1055.97	10.13
C830	0.00	126.25	1055.97	10.13
C840	0.00	126.25	1055.97	10.13
C850	0.00	126.25	1055.97	10.13
C860	0.00	126.25	1055.97	10.13
C870	0.00	126.25	1055.97	10.13
C880	0.00	126.25	1055.97	10.13
C890	0.00	126.25	1055.97	10.13
C900	0.00	126.25	1055.97	10.13
C910	0.00	126.25	1055.97	10.13
C920	0.00	126.25	1055.97	10.13
C930	0.00	126.25	1055.97	10.13
C940	0.00	126.25	1055.97	10.13
C950	0.00	126.25	1055.97	10.13
C960	0.00	126.25	1055.97	10.13
C970	0.00	126.25	1055.97	10.13
C980	0.00	126.25	1055.97	10.13
C990	0.00	126.25	1055.97	10.13
C1000	0.00	126.25	1055.97	10.13

[illegible]

<u>(16)</u>	(Ft S)	on Spring Shores Drive at Pebble Bluff Loop	10200 16100
<u>(17)</u>	(Ft N)	on Meadow Brook Drive at Atwater Bay Drive	10300 10500
<u>(18)</u>	(Ft N)	on Spring Shores Drive at Atwater Bay Drive	10300 10500
<u>(18b)</u>	(Ft E)	on Atwater Bay Drive at Atwater Bay Drive	00 10300

YIELD/STREET

<u>(19)</u>	(Ft S)	on Waterway Passage Drive (Traffic Circle) at Atwater Bay Drive	9800 10500
<u>(20)</u>	(Ft E)	on Atwater Bay Drive (Traffic Circle) at Waterway Passage Drive	10500 9800
<u>(21)</u>	(Ft N)	on Waterway Passage Drive (Traffic Circle) at Atwater Bay Drive	9800 10500
<u>(22)</u>	(Ft W)	on Atwater Bay Drive Traffic Circle at Waterway Passage Drive	10500 9800

TRAFFIC CIRCLE WARNING

<u>(23)</u>	(Ft S)	on Waterway Passage Drive at Atwater Bay Drive
<u>(24)</u>	(Ft E)	on Atwater Bay Drive at Waterway Passage Drive
<u>(25)</u>	(Ft N)	on Waterway Passage Drive at Atwater Bay Drive
<u>(26)</u>	(Ft W)	on Atwater Bay Drive at Waterway Passage Drive

ROUNDBOUT DIRECTIONAL ARROW

<u>(27)</u>	(Ft S)	on Waterway Passage Drive at Atwater Bay Drive
<u>(28)</u>	(Ft E)	on Atwater Bay Drive at Waterway Passage Drive

**(29) (Ft N) on Waterway Passage Drive
at Atwater Bay Drive**

**(30) (Ft W) on Atwater Bay Drive
at Waterway Passage Drive**

SPEED LIMIT 25 MPH

**(31) (Ft W) on Waterway Passage Drive
at Avalon Road**

END OF ROAD TREATMENT

**(32) (Ft N) on Waterway Passage Drive
at Pebble Bluff Loop**

**(33) (Ft N) on Atwater Bay Drive
at Pebble Bluff Loop**

**(34) (Ft N) on Shallow Water Drive
at Pebble Bluff Loop**

**(35) (Ft W) on Atwater Bay Drive
at Meadow Brook Drive**

ONE WAY

**(36) (Ft E) on Atwater Bay Drive
at Atwater Bay Drive**

DO NOT ENTER

**(37) (Ft E) on Atwater Bay Drive
at Atwater Bay Drive**

STOP/ALLEYWAYS

**(38a) (Ft E) on Ridge Haven Alley (WB) (stop only)
at Waterway Passage Drive**

(39a) (Ft W) on Ridge Haven Alley
at Atwater Bay Drive

**(40a) (Ft E) on Bayou Crest Alley (WB) (stop only)
at Spring Shores Drive**

**(41a) (Ft W) on Bayou Crest Alley (EB)
at Waterway Passage Drive**

**(42a) (Ft E) on Bayou Crest Alley (WB) (stop only)
at Waterway Passage Drive**

<u>(43a)</u>	(Ft W)	on Bayou Crest Alley at Atwater Bay Drive
<u>(44a)</u>	(Ft E)	on Harbor Mist Alley (WB) (stop only) at Waterway Passage Drive
<u>(45a)</u>	(Ft W)	on Harbor Mist Alley at Atwater Bay Drive
<u>(46a)</u>	(Ft E)	on Brook Springs Alley (WB) (stop only) at Waterway Passage Drive
<u>(47a)</u>	(Ft W)	on Brook Springs Alley at Atwater Bay Drive
<u>(48a)</u>	(Ft E)	on Outlook Shore Alley at Waterway Passage Drive
<u>(49a)</u>	(Ft W)	on Outlook Shore Alley at Atwater Bay Drive
<u>(50a)</u>	(Ft E)	on Harbor Mist Alley at Shallow Water Drive
<u>(51a)</u>	(Ft W)	on Harbor Mist Alley at Waterway Passage Drive
<u>(52a)</u>	(Ft E)	on Brook Springs Alley at Turning Tide Way
<u>(53a)</u>	(Ft W)	on Brook Springs Alley at Waterway Passage Drive
<u>(54a)</u>	(Ft W)	on Brisk Breeze Alley at Waterway Passage Drive
<u>(55a)</u>	(Ft E)	on Bayou Crest Alley at Pebble Bluff Loop
<u>(56a)</u>	(Ft W)	on Bayou Crest Alley (EB) at Spring Shores Drive
<u>(57a)</u>	(Ft E)	on Ridge Haven Alley at Meadow Brook Drive
<u>(58a)</u>	(Ft W)	on Ridge Haven Alley (EB) at Spring Shores Drive
<u>(59a)</u>	(Ft E)	on Ridge Haven Alley (WB) (stop only) at Spring Shores Drive

(60a) **(Ft W)** **on Ridge Haven Alley (EB)
at Waterway Passage Drive**

(61a) **(Ft S)** **on Still Rivers Alley
at Atwater Bay Drive**

NO PARKING with arrows

(62) **on Atwater Bay Drive starting approximately 190ft north of Pebble Bluff Loop extending south and west to Waterway Passage Drive on the west and north sides and on Atwater Bay Drive between Outlook Shore Alley and Bayou Crest Alley on the east and west sides**

(63) **on Pebble Bluff Loop from Atwater Bay Drive (north leg) extending west and east to Atwater Bay Drive on the south and north sides**

(64) **on Waterway Passage Drive starting approximately 210ft north of Pebble Bluff Loop extending south to Atwater Bay Drive on the west side**

(65) **on Shallow Water Drive from Pebble Bluff Loop extending north approximately 210ft on the east side**

(66) **on Turning Tide Way from Pebble Bluff Loop extending east to Atwater Bay Drive on the south side**

(67) **on Spring Shores Drive from Turning Tide Way extending south to Atwater Bay Drive on the east side**

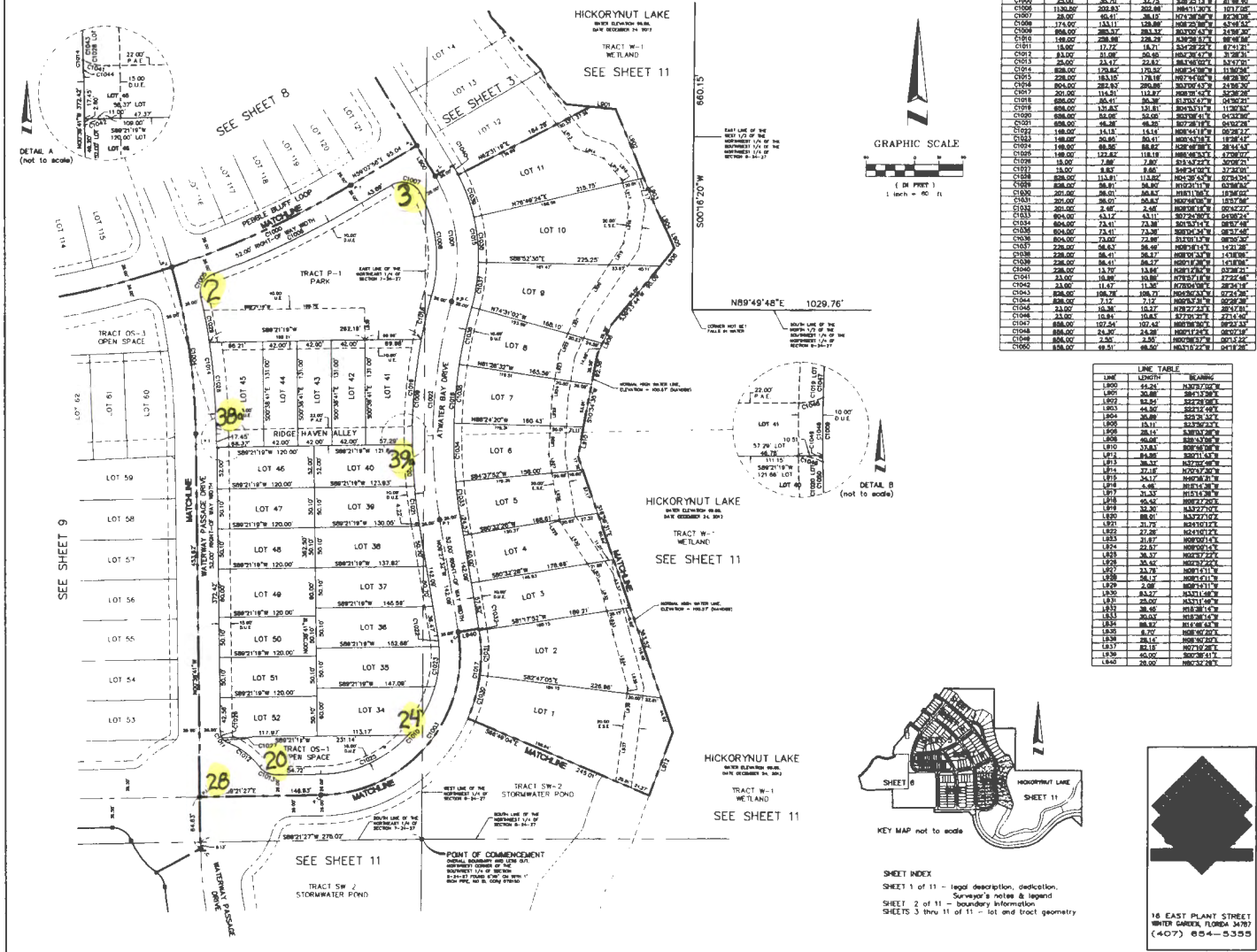
(68) **on Meadow Brook Drive from Pebble Bluff Loop extending south to Atwater Bay Drive on the east side**

ahw/

3/30/2018

WATERLEIGH PHASE 2A LYING IN SECTIONS 7 AND 8, TOWNSHIP 24 SOUTH, RANGE 27 EAST, ORANGE COUNTY, FLORIDA

SHEET 10 OF 11 PLAT BOOK **92** PAGE **15**

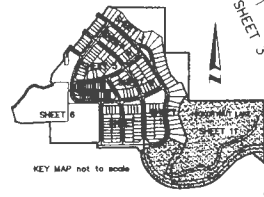


WATERLEIGH PHASE 2A LYING IN SECTIONS 7 AND 8, TOWNSHIP 24 SOUTH, RANGE 27 EAST, ORANGE COUNTY, FLORIDA

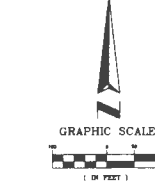
SHEET INDEX

SHEET 1 of 11 - legal description, dedication,
 Surveyor's notes & legend
 SHEET 2 of 11 - boundary information
 SHEETS 3 thru 11 of 11 - lot and tract geometry

LINE	LENGTH	BEARING
L1100	58.00	S89°30'28"W
L1101	188.82	S88°21'27"E
L1102	84.82	S88°26'41"W
L1103	170.29	S84°25'08"W
L1104	264.82	S84°25'04"W
L1105	170.29	S84°25'08"W
L1106	26.82	S84°25'04"W
L1107	38.00	S88°26'28"W
L1108	84.81	S88°21'45"E
L1109	10.12	S84°44'14"E
L1110	84.82	S88°21'27"E
L1111	80.82	S88°21'31"E
L1112	84.82	S88°21'27"E
L1113	118.18	S84°30'28"W
L1114	88.12	S84°30'28"W
L1115	43.12	S84°30'28"W
L1116	50.29	S84°30'28"W
L1117	50.27	S84°30'28"W
L1118	30.32	S84°30'28"W
L1119	11.32	S84°30'28"W
L1120	44.82	S84°30'28"W
L1121	53.38	S77°48'48"W
L1122	84.82	S84°30'28"W
L1123	88.81	S74°30'28"W
L1124	58.82	S74°30'28"W
L1125	58.82	S74°30'28"W
L1126	58.82	S74°30'28"W
L1127	58.82	S74°30'28"W
L1128	58.82	S74°30'28"W
L1129	58.82	S74°30'28"W
L1130	58.82	S74°30'28"W
L1131	58.82	S74°30'28"W
L1132	58.82	S74°30'28"W
L1133	58.82	S74°30'28"W
L1134	58.82	S74°30'28"W
L1135	58.82	S74°30'28"W
L1136	58.82	S74°30'28"W
L1137	58.82	S74°30'28"W
L1138	58.82	S74°30'28"W
L1139	58.82	S74°30'28"W
L1140	58.82	S74°30'28"W
L1141	58.82	S74°30'28"W
L1142	58.82	S74°30'28"W
L1143	58.82	S74°30'28"W
L1144	58.82	S74°30'28"W
L1145	58.82	S74°30'28"W
L1146	58.82	S74°30'28"W
L1147	58.82	S74°30'28"W
L1148	58.82	S74°30'28"W
L1149	58.82	S74°30'28"W
L1150	58.82	S74°30'28"W
L1151	58.82	S74°30'28"W
L1152	58.82	S74°30'28"W
L1153	58.82	S74°30'28"W
L1154	58.82	S74°30'28"W
L1155	58.82	S74°30'28"W
L1156	58.82	S74°30'28"W
L1157	58.82	S74°30'28"W
L1158	58.82	S74°30'28"W
L1159	58.82	S74°30'28"W
L1160	58.82	S74°30'28"W
L1161	58.82	S74°30'28"W
L1162	58.82	S74°30'28"W
L1163	58.82	S74°30'28"W
L1164	58.82	S74°30'28"W
L1165	58.82	S74°30'28"W
L1166	58.82	S74°30'28"W
L1167	58.82	S74°30'28"W
L1168	58.82	S74°30'28"W
L1169	58.82	S74°30'28"W
L1170	58.82	S74°30'28"W
L1171	58.82	S74°30'28"W
L1172	58.82	S74°30'28"W
L1173	58.82	S74°30'28"W
L1174	58.82	S74°30'28"W
L1175	58.82	S74°30'28"W
L1176	58.82	S74°30'28"W
L1177	58.82	S74°30'28"W
L1178	58.82	S74°30'28"W
L1179	58.82	S74°30'28"W
L1180	58.82	S74°30'28"W
L1181	58.82	S74°30'28"W
L1182	58.82	S74°30'28"W
L1183	58.82	S74°30'28"W
L1184	58.82	S74°30'28"W
L1185	58.82	S74°30'28"W
L1186	58.82	S74°30'28"W
L1187	58.82	S74°30'28"W
L1188	58.82	S74°30'28"W
L1189	58.82	S74°30'28"W
L1190	58.82	S74°30'28"W
L1191	58.82	S74°30'28"W
L1192	58.82	S74°30'28"W
L1193	58.82	S74°30'28"W
L1194	58.82	S74°30'28"W
L1195	58.82	S74°30'28"W
L1196	58.82	S74°30'28"W
L1197	58.82	S74°30'28"W
L1198	58.82	S74°30'28"W
L1199	58.82	S74°30'28"W
L1200	58.82	S74°30'28"W
L1201	58.82	S74°30'28"W
L1202	58.82	S74°30'28"W



GRAPHIC SCALE
 1 inch = 100 ft



SEE SHEET 9

SEE SHEET 10

SEE SHEET 11

SEE SHEET 12

SEE SHEET 13

SEE SHEET 14

SEE SHEET 15

SEE SHEET 16

SEE SHEET 17

SEE SHEET 18

SEE SHEET 19

SEE SHEET 20

SEE SHEET 21

SEE SHEET 22

SEE SHEET 23

SEE SHEET 24

SEE SHEET 25

SEE SHEET 26

SEE SHEET 27

SEE SHEET 28

SEE SHEET 29

SEE SHEET 30

SEE SHEET 31

SEE SHEET 32

SEE SHEET 33

SEE SHEET 34

SEE SHEET 35

LOT 20

LOT 19

LOT 18

LOT 17

LOT 16

LOT 15

LOT 14

LOT 13

LOT 12

LOT 11

LOT 10

LOT 9

LOT 8

LOT 7

LOT 6

LOT 5

LOT 4

LOT 3

LOT 2

LOT 1

LOT 38

LOT 37

LOT 36

LOT 35

LOT 34

LOT 33

LOT 32

LOT 31

LOT 30

LOT 29

LOT 28

LOT 27

LOT 26

LOT 25

LOT 24

LOT 23

LOT 22

LOT 21

LOT 20

LOT 19

LOT 18

LOT 17

LOT 16

LOT 15

LOT 14

CURVE	RADIUS	LENGTH	CHORD	BEARING	DELTA
C1100	170.29	30.82	30.82	S89°30'28"W	90°00'00"
C1101	300.00	84.82	84.82	S88°21'27"E	90°00'00"
C1102	300.00	84.82	84.82	S88°26'41"W	90°00'00"
C1103	300.00	170.29	170.29	S84°25'08"W	90°00'00"
C1104	300.00	264.82	264.82	S84°25'04"W	90°00'00"
C1105	300.00	170.29	170.29	S84°25'08"W	90°00'00"
C1106	300.00	26.82	26.82	S84°25'04"W	90°00'00"
C1107	300.00	38.00	38.00	S88°26'28"W	90°00'00"
C1108	300.00	84.81	84.81	S88°21'45"E	90°00'00"
C1109	300.00	10.12	10.12	S84°44'14"E	90°00'00"
C1110	300.00	84.82	84.82	S88°21'27"E	90°00'00"
C1111	300.00	80.82	80.82	S88°21'31"E	90°00'00"
C1112	300.00	84.82	84.82	S88°21'27"E	90°00'00"
C1113	300.00	118.18	118.18	S84°30'28"W	90°00'00"
C1114	300.00	88.12	88.12	S84°30'28"W	90°00'00"
C1115	300.00	43.12	43.12	S84°30'28"W	90°00'00"
C1116	300.00	50.29	50.29	S84°30'28"W	90°00'00"
C1117	300.00	50.27	50.27	S84°30'28"W	90°00'00"
C1118	300.00	30.32	30.32	S84°30'28"W	90°00'00"
C1119	300.00	11.32	11.32	S84°30'28"W	90°00'00"
C1120	300.00	44.82	44.82	S84°30'28"W	90°00'00"
C1121	300.00	53.38	53.38	S77°48'48"W	90°00'00"
C1122	300.00	84.82	84.82	S84°30'28"W	90°00'00"
C1123	300.00	88.81	88.81	S74°30'28"W	90°00'00"
C1124	300.00	58.82	58.82	S74°30'28"W	90°00'00"
C1125	300.00	58.82	58.82	S74°30'28"W	90°00'00"
C1126	300.00	58.82	58.82	S74°30'28"W	90°00'00"
C1127	300.00	58.82	58.82	S74°30'28"W	90°00'00"
C1128	300.00	58.82	58.82	S74°30'28"W	90°00'00"
C1129	300.00	58.82	58.82	S74°30'28"W	90°00'00"
C1130	300.00	58.82	58.82	S74°30'28"W	90°00'00"

NOT PLATTED

HICKORYNUT LAKE

TRACT W-1 WETLAND

TRACT W-1 WETLAND

TRACT W-1 WETLAND

TRACT W-1 WETLAND

TRACT W-1 WETLAND

TRACT W-1 WETLAND

TRACT W-1 WETLAND

TRACT W-1 WETLAND

TRACT W-1 WETLAND

TRACT W-1 WETLAND

TRACT W-1 WETLAND

TRACT W-1 WETLAND

TRACT W-1 WETLAND

TRACT W-1 WETLAND

TRACT W-1 WETLAND

TRACT W-1 WETLAND

TRACT W-1 WETLAND

TRACT W-1 WETLAND

TRACT W-1 WETLAND

TRACT W-1 WETLAND

TRACT W-1 WETLAND

TRACT W-1 WETLAND

TRACT W-1 WETLAND

TRACT W-1 WETLAND

TRACT W-1 WETLAND

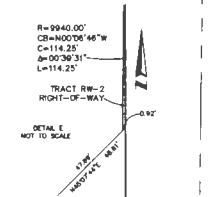
TRACT W-1 WETLAND

TRACT W-1 WETLAND

TRACT W-1 WETLAND

TRACT W-1 WETLAND

TRACT W-1 WETLAND



NOT PLATTED

HICKORYNUT LAKE

TRACT W-1 WETLAND

TRACT W-1 WETLAND

TRACT W-1 WETLAND

TRACT W-1 WETLAND

TRACT W-1 WETLAND

TRACT W-1 WETLAND

TRACT W-1 WETLAND

TRACT W-1 WETLAND

TRACT W-1 WETLAND

TRACT W-1 WETLAND

TRACT W-1 WETLAND

TRACT W-1 WETLAND

TRACT W-1 WETLAND

TRACT W-1 WETLAND

TRACT W-1 WETLAND

TRACT W-1 WETLAND

TRACT W-1 WETLAND

TRACT W-1 WETLAND

TRACT W-1 WETLAND

TRACT W-1 WETLAND

TRACT W-1 WETLAND

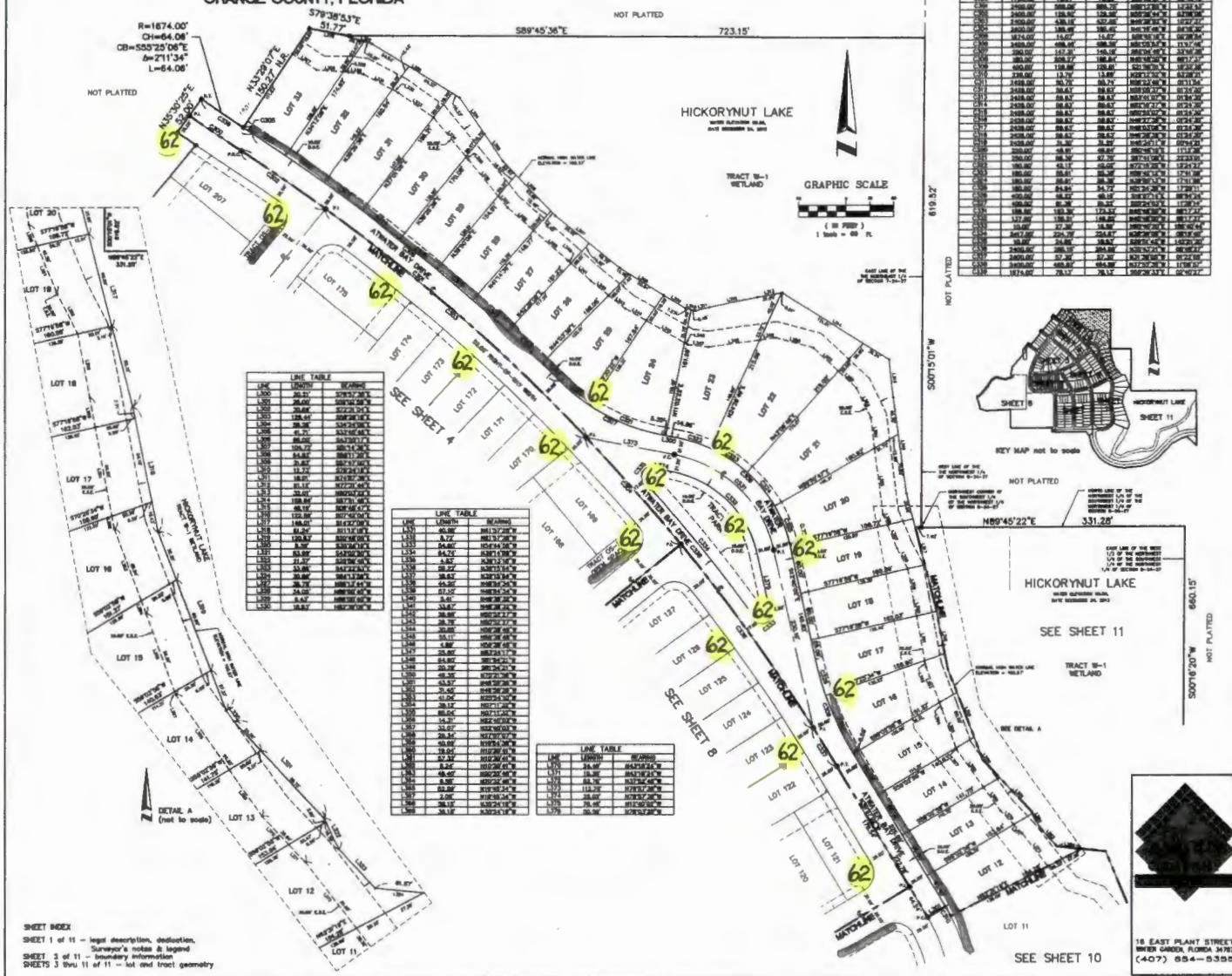
TRACT W-1 WETLAND

TRACT W-1 WETLAND

TRACT W-1 WETLAND

WATERLEIGH PHASE 2A
LYING IN SECTIONS 7 AND 8, TOWNSHIP 24 SOUTH, RANGE 27 EAST,
ORANGE COUNTY, FLORIDA

SHEET 3 OF 11

PLAT BOOK **92** PAGE **08**

NO PARKING

WATERLEIGH PHASE 2A
LYING IN SECTIONS 7 AND 8, TOWNSHIP 24 SOUTH, RANGE 27 EAST,
ORANGE COUNTY, FLORIDA

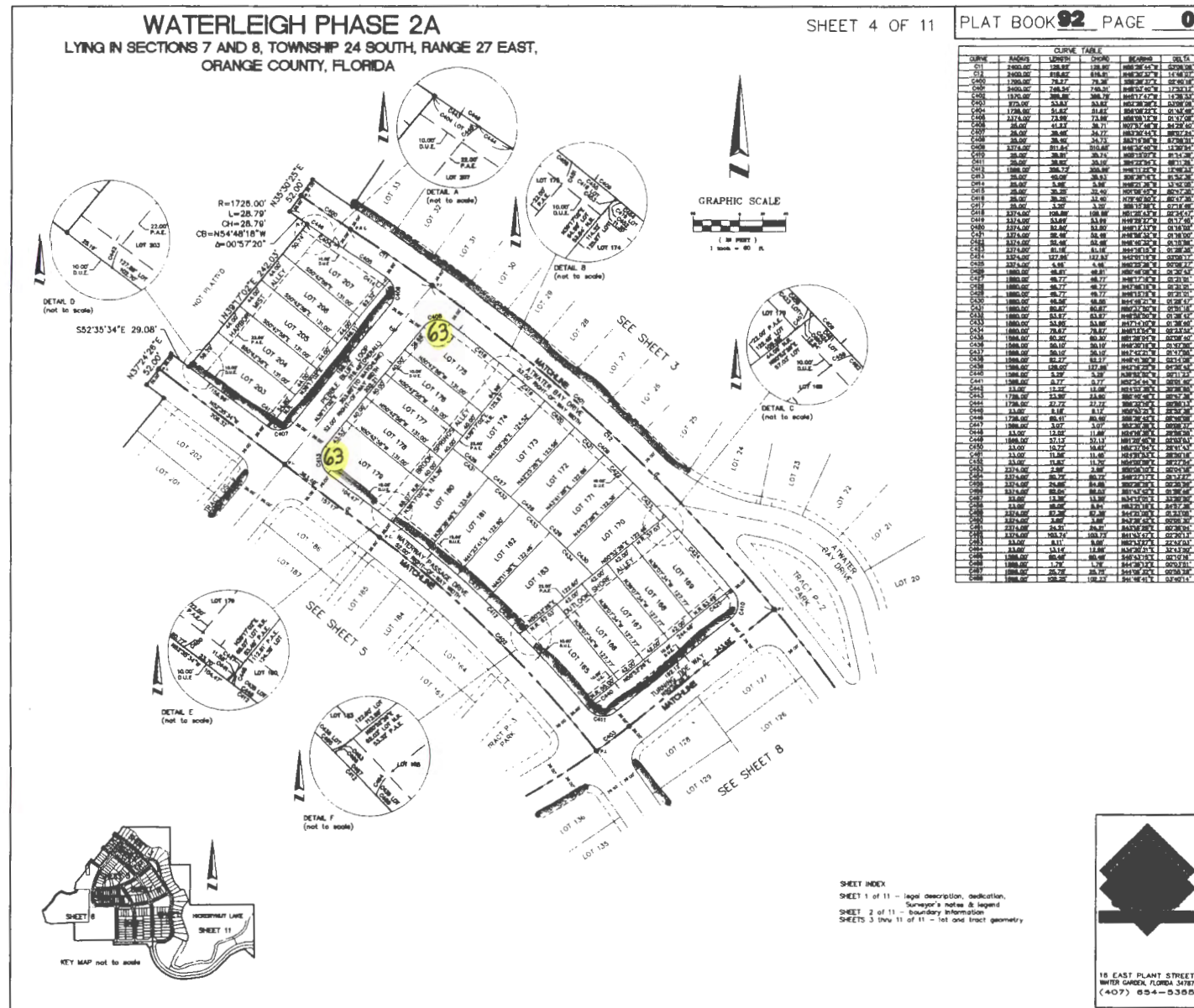
SHEET 4 OF 11

PLAT BOOK **92** PAGE **09**

NO PARKING

NO PARKING

 - PARKING ZONES



CURVE TABLE		CURVE DATA		CURVE DATA	
STATION	ANGLE	LENGTH	CHORD	BEARING	DELTA
170	178.00	178.00	178.00	178.00	178.00
171	178.00	178.00	178.00	178.00	178.00
172	178.00	178.00	178.00	178.00	178.00
173	178.00	178.00	178.00	178.00	178.00
174	178.00	178.00	178.00	178.00	178.00
175	178.00	178.00	178.00	178.00	178.00
176	178.00	178.00	178.00	178.00	178.00
177	178.00	178.00	178.00	178.00	178.00
178	178.00	178.00	178.00	178.00	178.00
179	178.00	178.00	178.00	178.00	178.00
180	178.00	178.00	178.00	178.00	178.00
181	178.00	178.00	178.00	178.00	178.00
182	178.00	178.00	178.00	178.00	178.00
183	178.00	178.00	178.00	178.00	178.00
184	178.00	178.00	178.00	178.00	178.00
185	178.00	178.00	178.00	178.00	178.00
186	178.00	178.00	178.00	178.00	178.00
187	178.00	178.00	178.00	178.00	178.00
188	178.00	178.00	178.00	178.00	178.00
189	178.00	178.00	178.00	178.00	178.00
190	178.00	178.00	178.00	178.00	178.00
191	178.00	178.00	178.00	178.00	178.00
192	178.00	178.00	178.00	178.00	178.00
193	178.00	178.00	178.00	178.00	178.00
194	178.00	178.00	178.00	178.00	178.00
195	178.00	178.00	178.00	178.00	178.00
196	178.00	178.00	178.00	178.00	178.00
197	178.00	178.00	178.00	178.00	178.00
198	178.00	178.00	178.00	178.00	178.00
199	178.00	178.00	178.00	178.00	178.00
200	178.00	178.00	178.00	178.00	178.00

NO PARKING

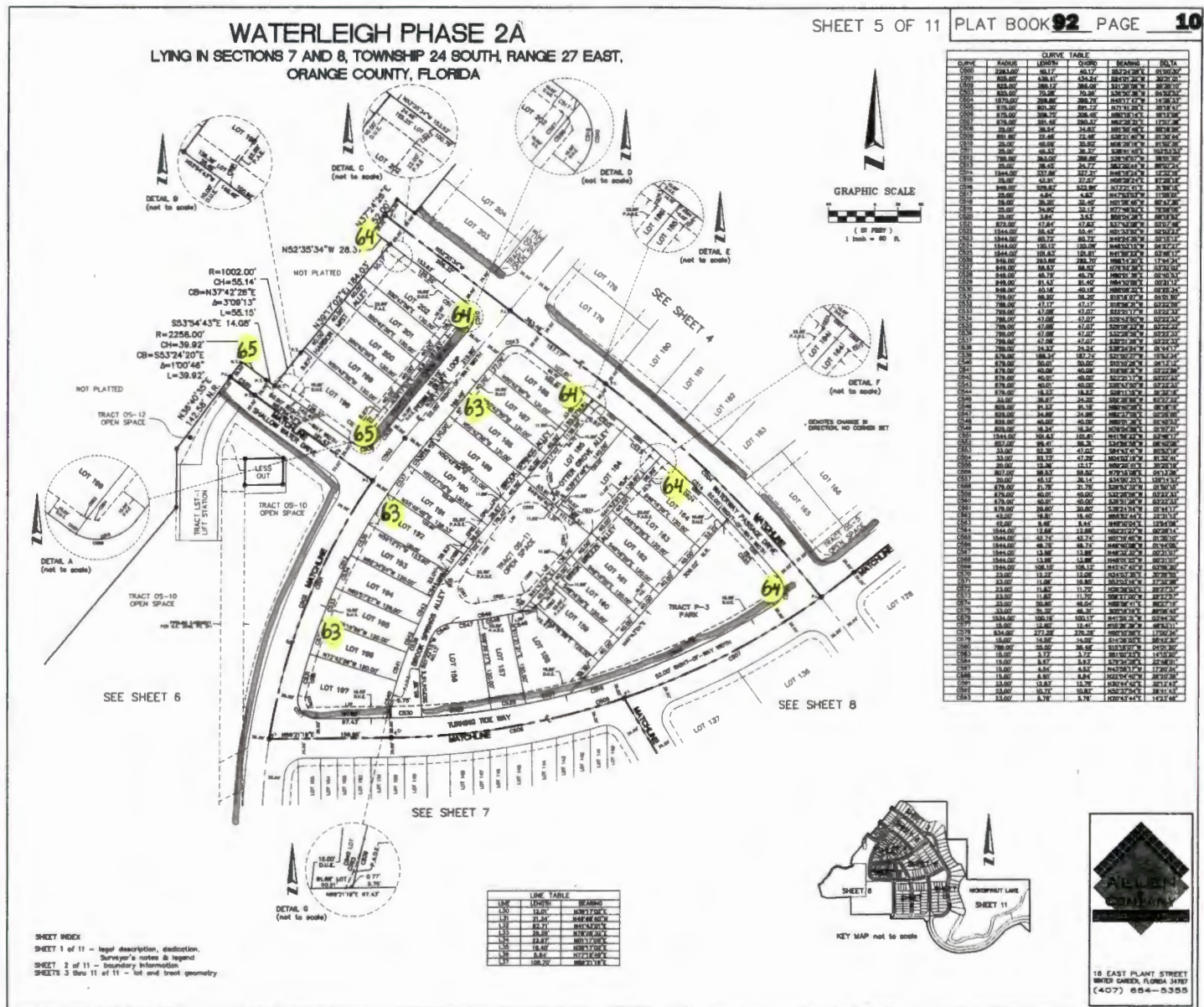
FH

WATERLEIGH PHASE 2A

LYING IN SECTIONS 7 AND 8, TOWNSHIP 24 SOUTH, RANGE 27 EAST,
ORANGE COUNTY, FLORIDA


SHEET 5 OF 11 PLAT BOOK 92 PAGE 10

NO PARKING



PLAT BOOK 92 PAGE 12

ORBIT	TIME	ORBIT	TIME	ORBIT	TIME
C500	575.00	C501	575.00	C502	575.00
C503	575.00	C504	575.00	C505	575.00
C506	575.00	C507	575.00	C508	575.00
C509	575.00	C510	575.00	C511	575.00
C512	575.00	C513	575.00	C514	575.00
C515	575.00	C516	575.00	C517	575.00
C518	575.00	C519	575.00	C520	575.00
C521	575.00	C522	575.00	C523	575.00
C524	575.00	C525	575.00	C526	575.00
C527	575.00	C528	575.00	C529	575.00
C530	575.00	C531	575.00	C532	575.00
C533	575.00	C534	575.00	C535	575.00
C536	575.00	C537	575.00	C538	575.00
C539	575.00	C540	575.00	C541	575.00
C542	575.00	C543	575.00	C544	575.00
C545	575.00	C546	575.00	C547	575.00
C548	575.00	C549	575.00	C550	575.00
C551	575.00	C552	575.00	C553	575.00
C554	575.00	C555	575.00	C556	575.00
C557	575.00	C558	575.00	C559	575.00
C560	575.00	C561	575.00	C562	575.00
C563	575.00	C564	575.00	C565	575.00
C566	575.00	C567	575.00	C568	575.00
C569	575.00	C570	575.00	C571	575.00
C572	575.00	C573	575.00	C574	575.00
C575	575.00	C576	575.00	C577	575.00
C578	575.00	C579	575.00	C580	575.00
C581	575.00	C582	575.00	C583	575.00
C584	575.00	C585	575.00	C586	575.00
C587	575.00	C588	575.00	C589	575.00
C590	575.00	C591	575.00	C592	575.00
C593	575.00	C594	575.00	C595	575.00
C596	575.00	C597	575.00	C598	575.00
C599	575.00	C600	575.00	C601	575.00
C602	575.00	C603	575.00	C604	575.00
C605	575.00	C606	575.00	C607	575.00
C608	575.00	C609	575.00	C610	575.00
C611	575.00	C612	575.00	C613	575.00
C614	575.00	C615	575.00	C616	575.00
C617	575.00	C618	575.00	C619	575.00
C620	575.00	C621	575.00	C622	575.00
C623	575.00	C624	575.00	C625	575.00
C626	575.00	C627	575.00	C628	575.00
C629	575.00	C630	575.00	C631	575.00
C632	575.00	C633	575.00	C634	575.00
C635	575.00	C636	575.00	C637	575.00
C638	575.00	C639	575.00	C640	575.00
C641	575.00	C642	575.00	C643	575.00
C644	575.00	C645	575.00	C646	575.00
C647	575.00	C648	575.00	C649	575.00
C650	575.00	C651	575.00	C652	575.00
C653	575.00	C654	575.00	C655	575.00
C656	575.00	C657	575.00	C658	575.00
C659	575.00	C660	575.00	C661	575.00
C662	575.00	C663	575.00	C664	575.00
C665	575.00	C666	575.00	C667	575.00
C668	575.00	C669	575.00	C670	575.00
C671	575.00	C672	575.00	C673	575.00
C674	575.00	C675	575.00	C676	575.00
C677	575.00	C678	575.00	C679	575.00
C680	575.00	C681	575.00	C682	575.00
C683	575.00	C684	575.00	C685	575.00
C686	575.00	C687	575.00	C688	575.00
C689	575.00	C690	575.00	C691	575.0

GRAPHIC SCALE

 (IN FEET)
 1 inch = 40 ft.

 **PARKING ZONES**

NO PARKING

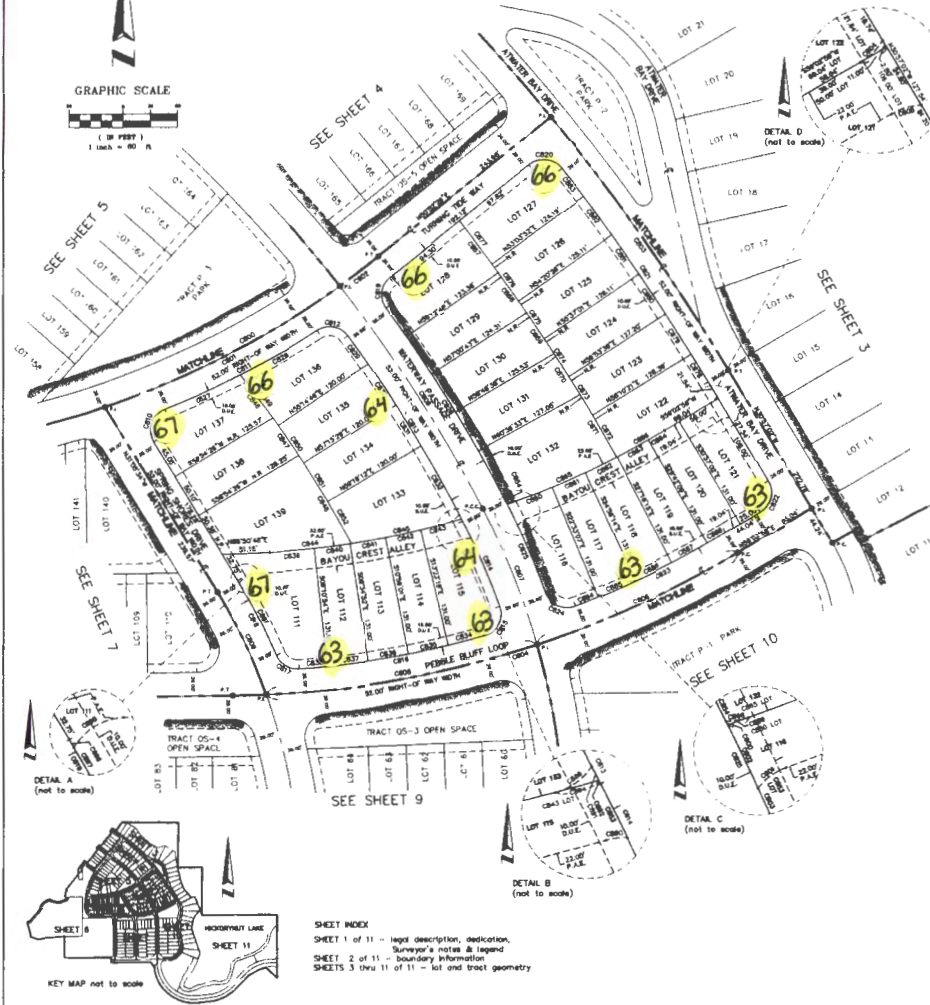
WATERLEIGH PHASE 2A

LYING IN SECTIONS 7 AND 8, TOWNSHIP 24 SOUTH, RANGE 27 EAST,
ORANGE COUNTY, FLORIDA

SHEET 8 OF 11

PLAT BOOK **92** PAGE **13**

NO PARKING



CURVE	BACKS	LENGTH	CURVE	WARRANTY	DELTA
0001	870.00	100.00	0001	100.00	100.00
0002	870.00	100.00	0002	100.00	100.00
0003	870.00	100.00	0003	100.00	100.00
0004	870.00	100.00	0004	100.00	100.00
0005	870.00	100.00	0005	100.00	100.00
0006	870.00	100.00	0006	100.00	100.00
0007	870.00	100.00	0007	100.00	100.00
0008	870.00	100.00	0008	100.00	100.00
0009	870.00	100.00	0009	100.00	100.00
0010	870.00	100.00	0010	100.00	100.00
0011	870.00	100.00	0011	100.00	100.00
0012	870.00	100.00	0012	100.00	100.00
0013	870.00	100.00	0013	100.00	100.00
0014	870.00	100.00	0014	100.00	100.00
0015	870.00	100.00	0015	100.00	100.00
0016	870.00	100.00	0016	100.00	100.00
0017	870.00	100.00	0017	100.00	100.00
0018	870.00	100.00	0018	100.00	100.00
0019	870.00	100.00	0019	100.00	100.00
0020	870.00	100.00	0020	100.00	100.00
0021	870.00	100.00	0021	100.00	100.00
0022	870.00	100.00	0022	100.00	100.00
0023	870.00	100.00	0023	100.00	100.00
0024	870.00	100.00	0024	100.00	100.00
0025	870.00	100.00	0025	100.00	100.00
0026	870.00	100.00	0026	100.00	100.00
0027	870.00	100.00	0027	100.00	100.00
0028	870.00	100.00	0028	100.00	100.00
0029	870.00	100.00	0029	100.00	100.00
0030	870.00	100.00	0030	100.00	100.00
0031	870.00	100.00	0031	100.00	100.00
0032	870.00	100.00	0032	100.00	100.00
0033	870.00	100.00	0033	100.00	100.00
0034	870.00	100.00	0034	100.00	100.00
0035	870.00	100.00	0035	100.00	100.00
0036	870.00	100.00	0036	100.00	100.00
0037	870.00	100.00	0037	100.00	100.00
0038	870.00	100.00	0038	100.00	100.00
0039	870.00	100.00	0039	100.00	100.00
0040	870.00	100.00	0040	100.00	100.00
0041	870.00	100.00	0041	100.00	100.00
0042	870.00	100.00	0042	100.00	100.00
0043	870.00	100.00	0043	100.00	100.00
0044	870.00	100.00	0044	100.00	100.00
0045	870.00	100.00	0045	100.00	100.00
0046	870.00	100.00	0046	100.00	100.00
0047	870.00	100.00	0047	100.00	100.00
0048	870.00	100.00	0048	100.00	100.00
0049	870.00	100.00	0049	100.00	100.00
0050	870.00	100.00	0050	100.00	100.00
0051	870.00	100.00	0051	100.00	100.00
0052	870.00	100.00	0052	100.00	100.00
0053	870.00	100.00	0053	100.00	100.00
0054	870.00	100.00	0054	100.00	100.00
0055	870.00	100.00	0055	100.00	100.00
0056	870.00	100.00	0056	100.00	100.00
0057	870.00	100.00	0057	100.00	100.00
0058	870.00	100.00	0058	100.00	100.00
0059	870.00	100.00	0059	100.00	100.00
0060	870.00	100.00	0060	100.00	100.00
0061	870.00	100.00	0061	100.00	100.00
0062	870.00	100.00	0062	100.00	100.00
0063	870.00	100.00	0063	100.00	100.00
0064	870.00	100.00	0064	100.00	100.00
0065	870.00	100.00	0065	100.00	100.00
0066	870.00	100.00	0066	100.00	100.00
0067	870.00	100.00	0067	100.00	100.00
0068	870.00	100.00	0068	100.00	100.00
0069	870.00	100.00	0069	100.00	100.00
0070	870.00	100.00	0070	100.00	100.00
0071	870.00	100.00	0071	100.00	100.00
0072	870.00	100.00	0072	100.00	100.00
0073	870.00	100.00	0073	100.00	100.00
0074	870.00	100.00	0074	100.00	100.00
0075	870.00	100.00	0075	100.00	100.00
0076	870.00	100.00	0076	100.00	100.00
0077	870.00	100.00	0077	100.00	100.00
0078	870.00	100.00	0078	100.00	100.00
0079	870.00	100.00	0079	100.00	100.00
0080	870.00	100.00	0080	100.00	100.00
0081	870.00	100.00	0081	100.00	100.00
0082	870.00	100.00	0082	100.00	100.00
0083	870.00	100.00	0083	100.00	100.00
0084	870.00	100.00	0084	100.00	100.00
0085	870.00	100.00	0085	100.00	100.00
0086	870.00	100.00	0086	100.00	100.00
0087	870.00	100.00	0087	100.00	100.00
0088	870.00	100.00	0088	100.00	100.00
0089	870.00	100.00	0089	100.00	100.00
0090	870.00	100.00	0090	100.00	100.00
0091	870.00	100.00	0091	100.00	100.00
0092	870.00	100.00	0092	100.00	100.00
0093	870.00	100.00	0093	100.00	100.00
0094	870.00	100.00	0094	100.00	100.00
0095	870.00	100.00	0095	100.00	100.00
0096	870.00	100.00	0096	100.00	100.00
0097	870.00	100.00	0097	100.00	100.00
0098	870.00	100.00	0098	100.00	100.00
0099	870.00	100.00	0099	100.00	100.00
0100	870.00	100.00	0100	100.00	100.00

NO PARKING

-PARKING ZONES



15 EAST PLANT STREET
WINTER GARDEN, FLORIDA 34787
(407) 654-5355

NO PARKING

NO PARKING

F1

WATERLEIGH PHASE 2A LYING IN SECTIONS 7 AND 8, TOWNSHIP 24 SOUTH, RANGE 27 EAST, ORANGE COUNTY, FLORIDA

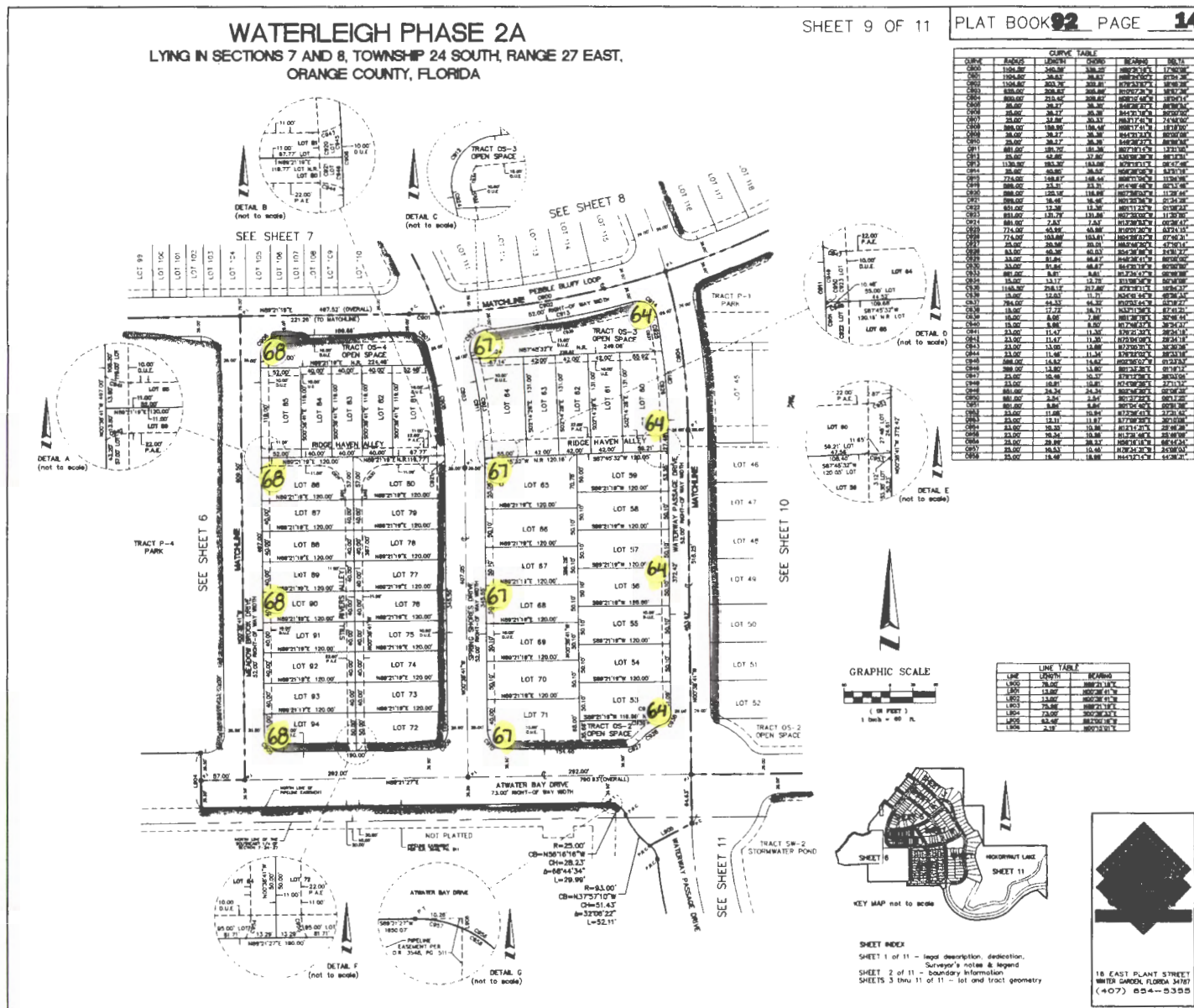
SHEET 9 OF 11

PLAT BOOK 92 PAGE 14

NO PARKING

NO PARKING

- PARKING ZONES



NO PARKING

