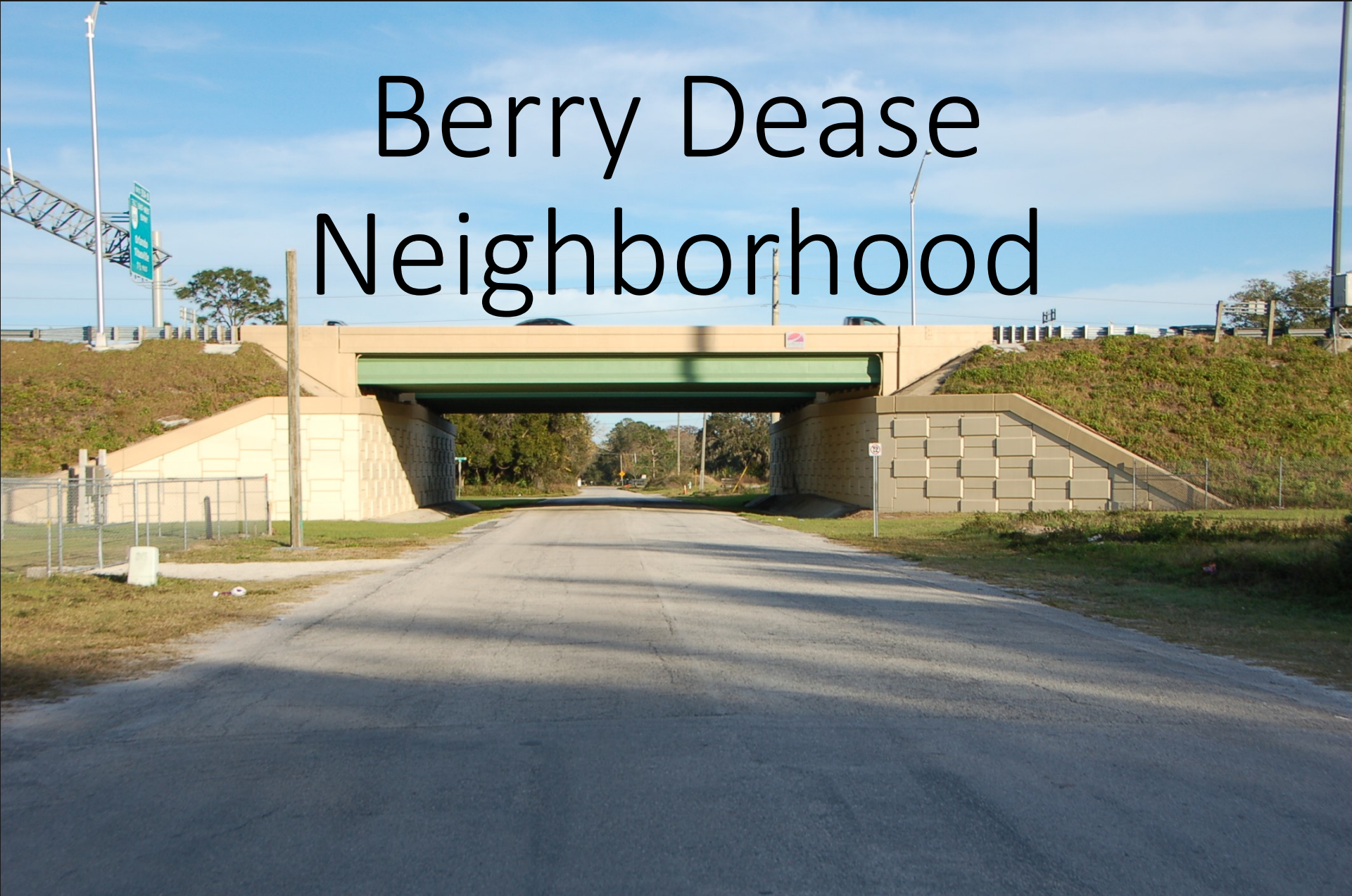


# Berry Dease Neighborhood



# Thank You!

- Thank you for what each you do individually for your District.
- Thank you for what you do as a Commission for this County.
- During this 3+ year project we have witnessed an incredible amount of time and commitment made by each of you, this Commission and the Staff of the County to our cause.
- We have a much greater appreciation for what is done for Orange County.

# Thank You!

- Thank you for the Rural Residential Enclave Study
- Thank you for realizing what these areas offer
- Thank you for the investment in our areas
- Thank you for wanting to set them aside and preserve them
- Thank you for realizing these areas add true value to the community

The Rural Residential Enclave Concept truly is about

VALUE























The Rural Residential Enclave Concept truly is about

VALUE

SPACE



















The Rural Residential Enclave Concept truly is about

VALUE

SPACE

COMPATIBILITY























# What We Have Accomplished

- Approximately 3+ years ago at multiple workshops and community meetings the lines were drawn and the boundaries determined for the Berry Dease Rural Residential Enclave
- We have repeatedly illustrated our Uniqueness and the development pressure we are being threatened by
- We asked that Future development be COMPATIBLE with those LARGER lot
- In the recent months, multiple larger lots have been sold to be developed under the Enclave requirements protecting the Rural Character of the area
- We have proven the larger lots are desirable, valuable and do not have to be developed with high density housing to be considered “valuable”

# What We Ask Today

- Now the future of our Enclave awaits direction
- We ask that you give it that direction that will last for generations to come
- Set it aside – with its current boundaries – and preserve it's Rural Character and protect it from the threat of detrimental future higher density development that is incompatible with our existing area
- We ask today that you establish the Berry Dease Enclave as a Rural Residential Enclave as proposed