



Board of County Commissioners

2018-2 Out-of-Cycle Privately-Initiated Map Amendment

Transmittal Public Hearing

October 16, 2018



Out-of-Cycle Amendment Process

- **Transmittal public hearings**
LPA – September 20, 2018
BCC – October 16, 2018
- **State and regional agency comments**
November 2018
- **Adoption public hearings**
LPA – December 20, 2018
BCC – January 2019



Amendment 2018-2-C-2-1

Agent: Julie Salvo, Orange County Public Schools

Owner: Orlando Beltway Associates, LLC

From: Rural/Agricultural (R)

To: Educational (EDU)

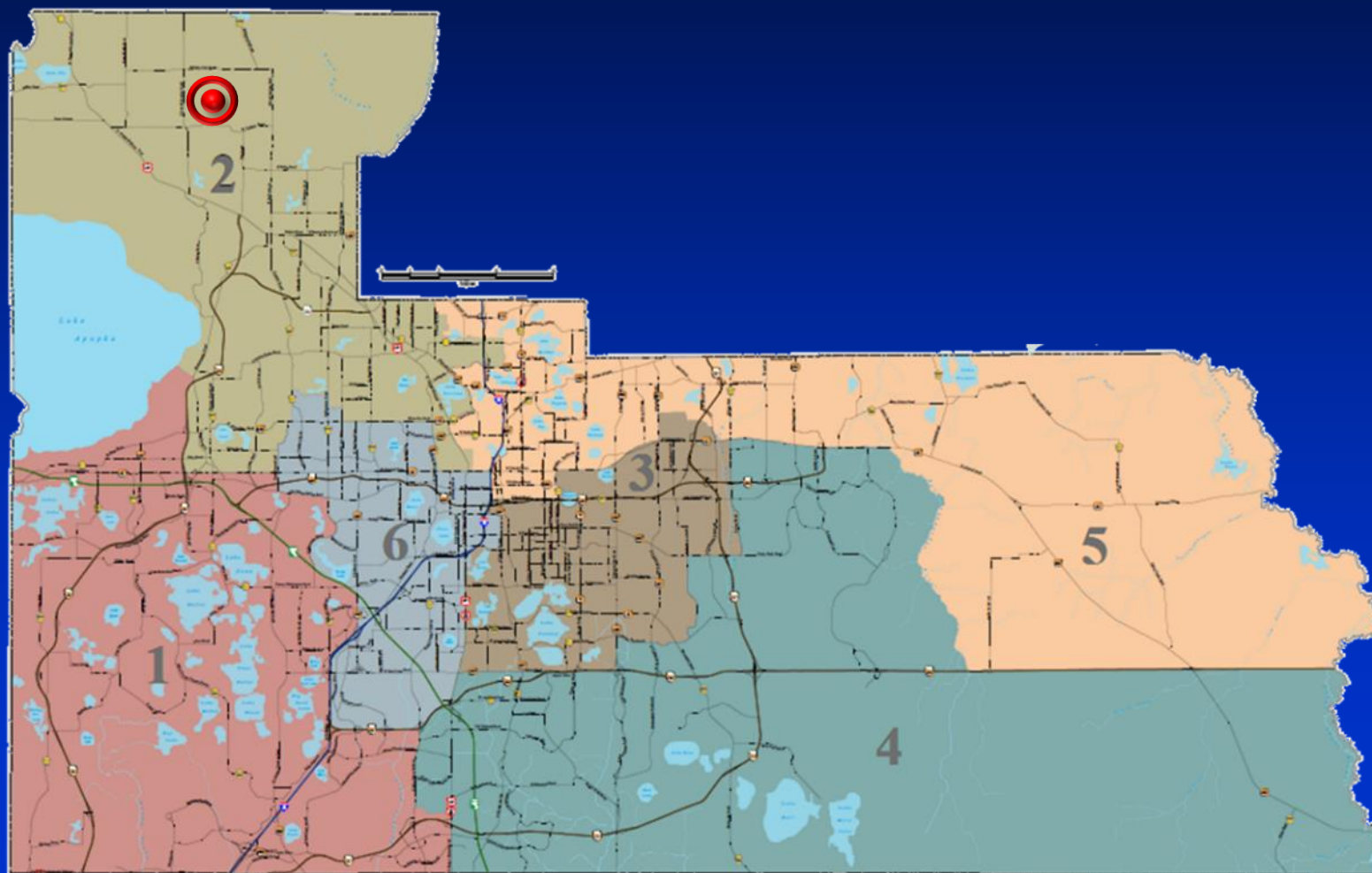
Acreage: 89.5 acres of a 161.32 gross acre parcel

Proposed Use: Public high school up to 400,000 square feet

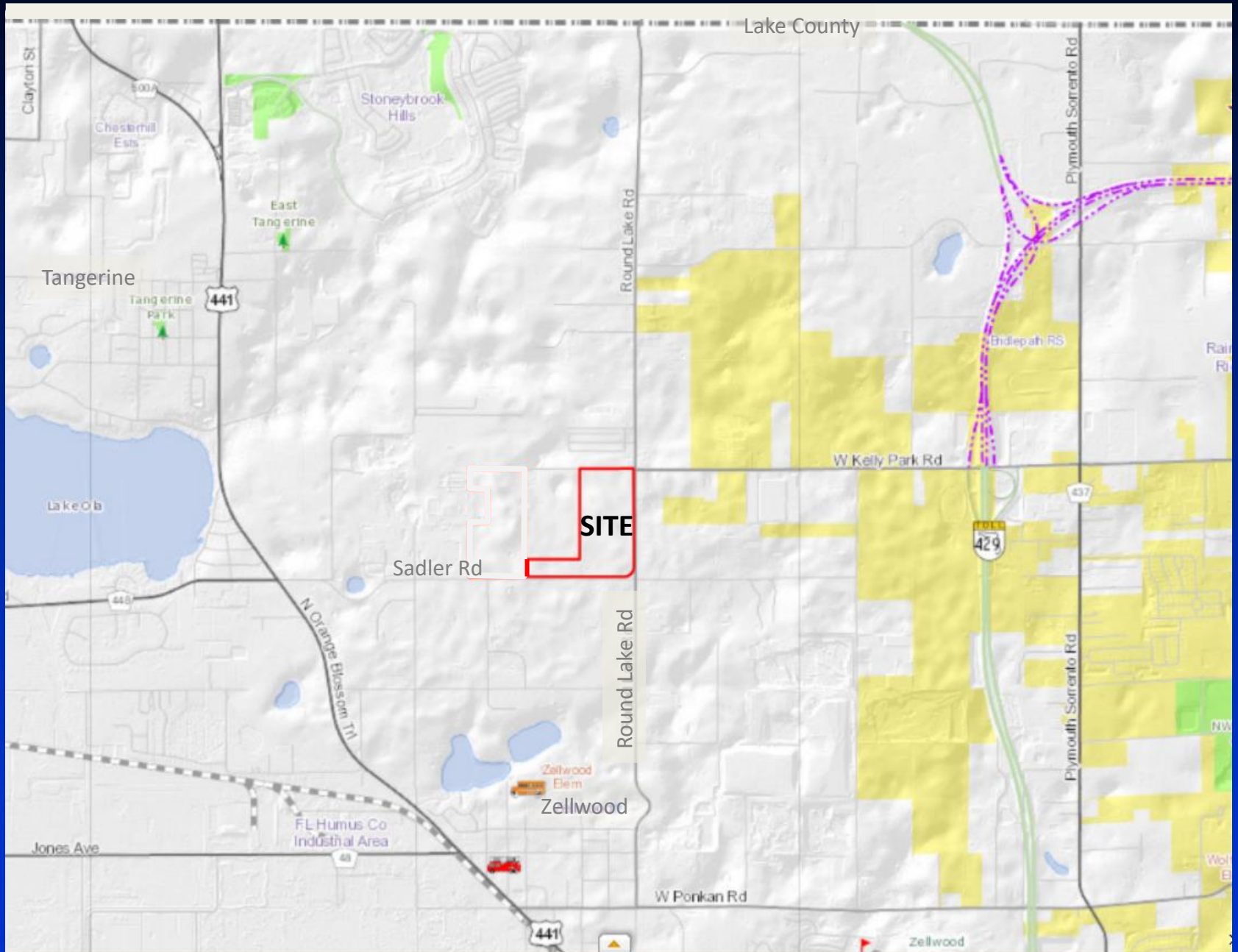


2018-2-C-2-1

Location



Location



Aerial

Cemetery Road

161.32 acre site

89.5 acre portion

W Kelly Pa

Ap

Round Lake Road

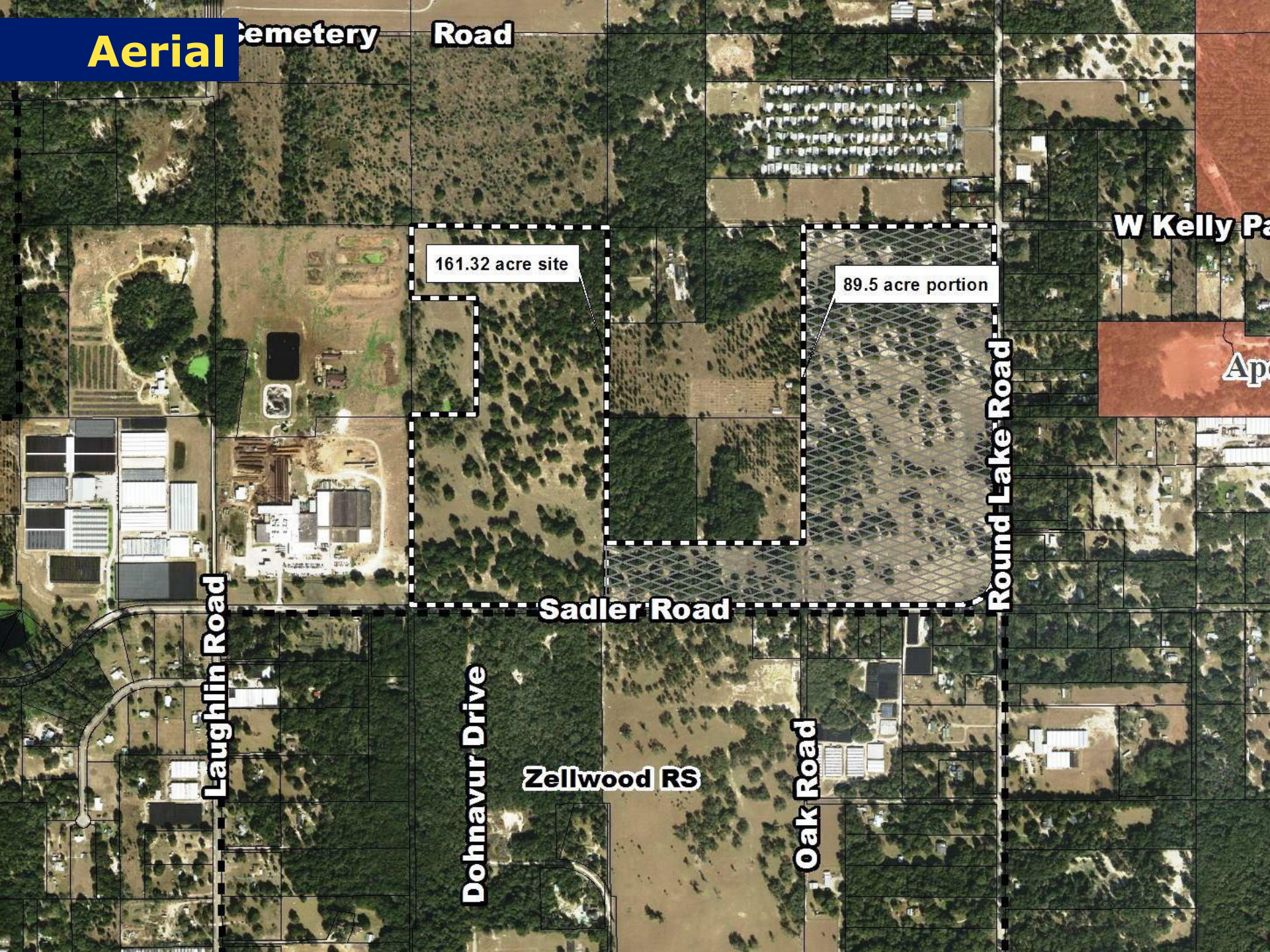
Sadler Road

Laughlin Road

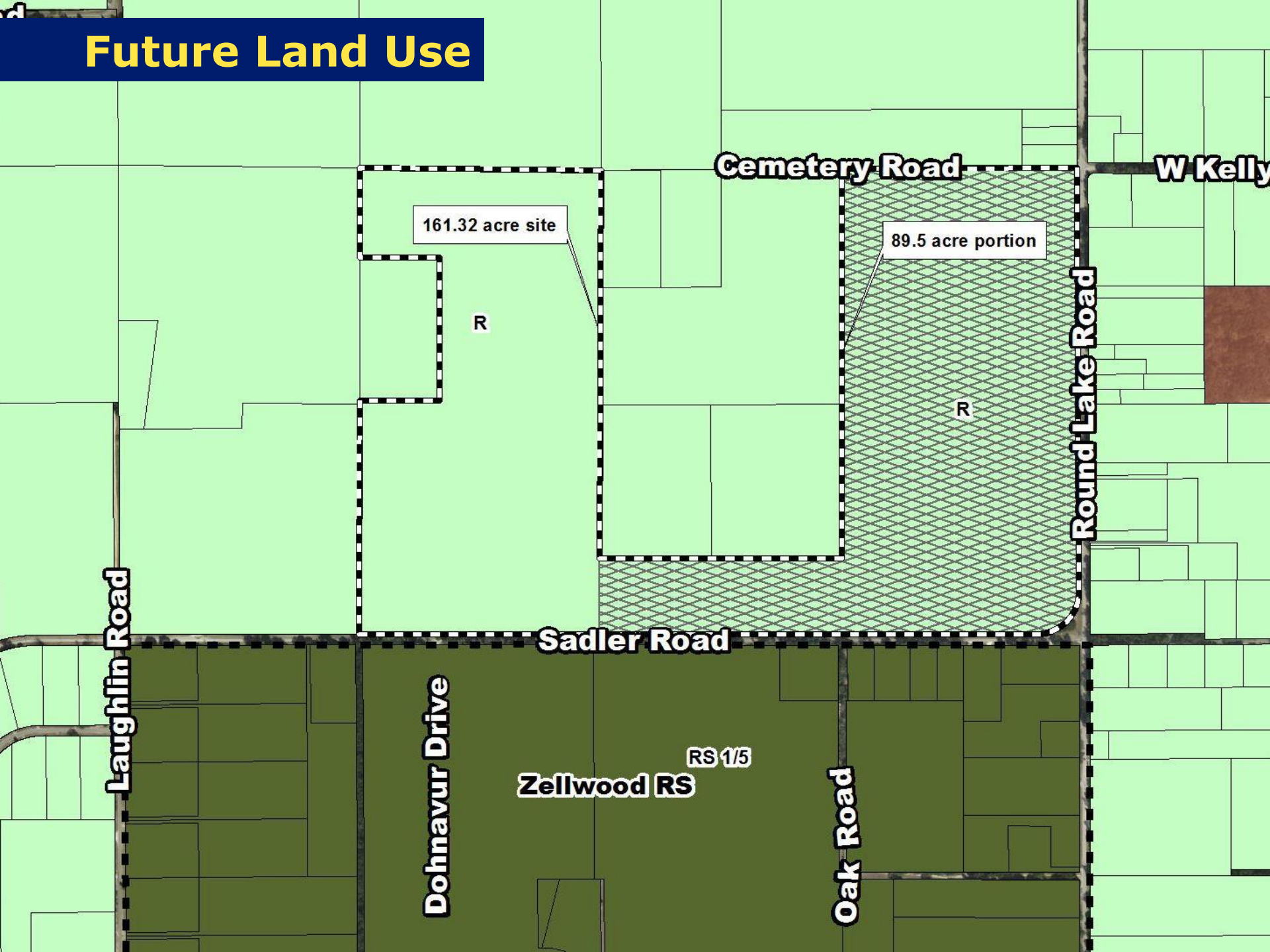
Dohnavur Drive

Zellwood RS

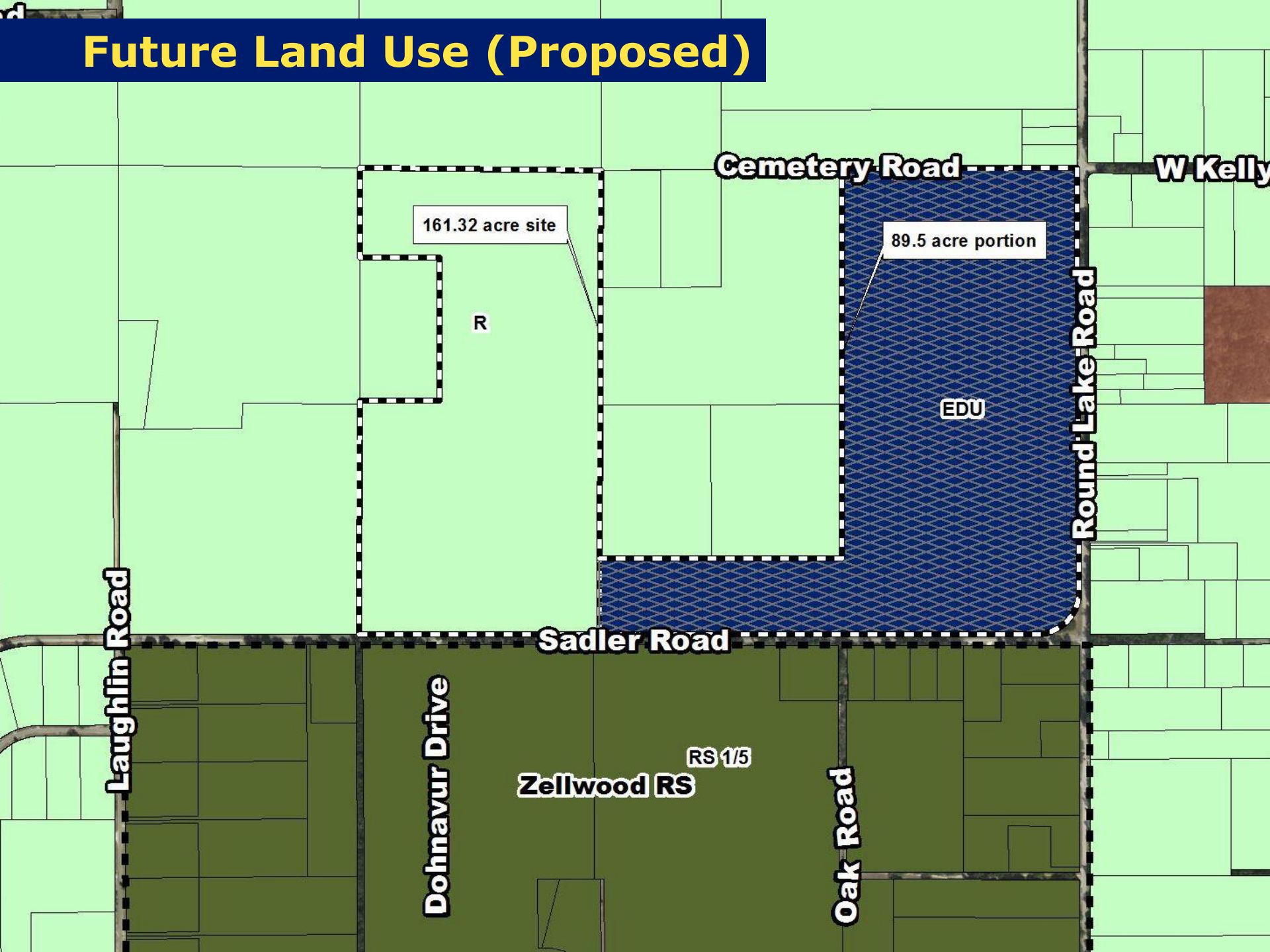
Oak Road



Future Land Use



Future Land Use (Proposed)



A-1

Zoning

A-1

R-T

A-1

Cemetery Road

W Kelly

161.32 acre site

89.5 acre portion

A-2

R-CE-2

R

A-1

A-1

Round Lake Road

Laughlin Road

Sadler Road

R-CE

R-CE

R-T-2

A-R

A-1

A-1

Zellwood RS

Oak Road

A-1

P-D

Hampden Dubose
Academy

R-CE-2

A-1



Amendment 2018-2-C-2-1

Staff Recommendation:

TRANSMIT

LPA Recommendation:

TRANSMIT

Action Requested:

- **Transmit Amendment 2018-2-C-2-1**



Board of County Commissioners

Comprehensive Plan

Public Hearings

October 16, 2018