

Public Hearing

Board of County Commissioners

Chapter 38 Ordinance

Package Sale of Alcoholic Beverages



October 16, 2018

ORANGE COUNTY PLANNING DIVISION

COMMUNITY, ENVIRONMENTAL & DEVELOPMENT SERVICES DEPARTMENT

Outline

Package Sale of Alcoholic Beverages

- **Background**
- **I-Drive District Overlay Zone**
- **Alcoholic Beverage Package Sale Ordinance**
 - Amending : Sec. 38-1414 - Prohibited Areas for Package Sales
Sec. 38-865 & 38-869 - Package Sales in I-Drive District
- **Today's Board Action**

The background of the image is a dark, semi-transparent aerial photograph of a suburban or urban area. It shows a network of roads, green spaces, and building footprints. The overall tone is dark, with the map details appearing in shades of grey and black. In the bottom right corner, the word "BACKGROUND" is written in a large, white, outlined font.

BACKGROUND

Background

Package Sale of Alcoholic Beverages

- **June 29th : I-Drive District Steering Review Group**
- **July 10th : BCC Discussion Item**
- **July 24th : Alcoholic Beverage License Holders Meeting**
- **Sept 20th : PZC Package Sale Ordinance**
- **Oct 16th : BCC 1st Public Hearing**

ISSUES:

- **Jurisdictional Differences**
- **Predictability of # of Stores within the District**
- **Flexibility on I-Drive Sub-District Store Location**
- **I-Drive District & County Wide Implications**

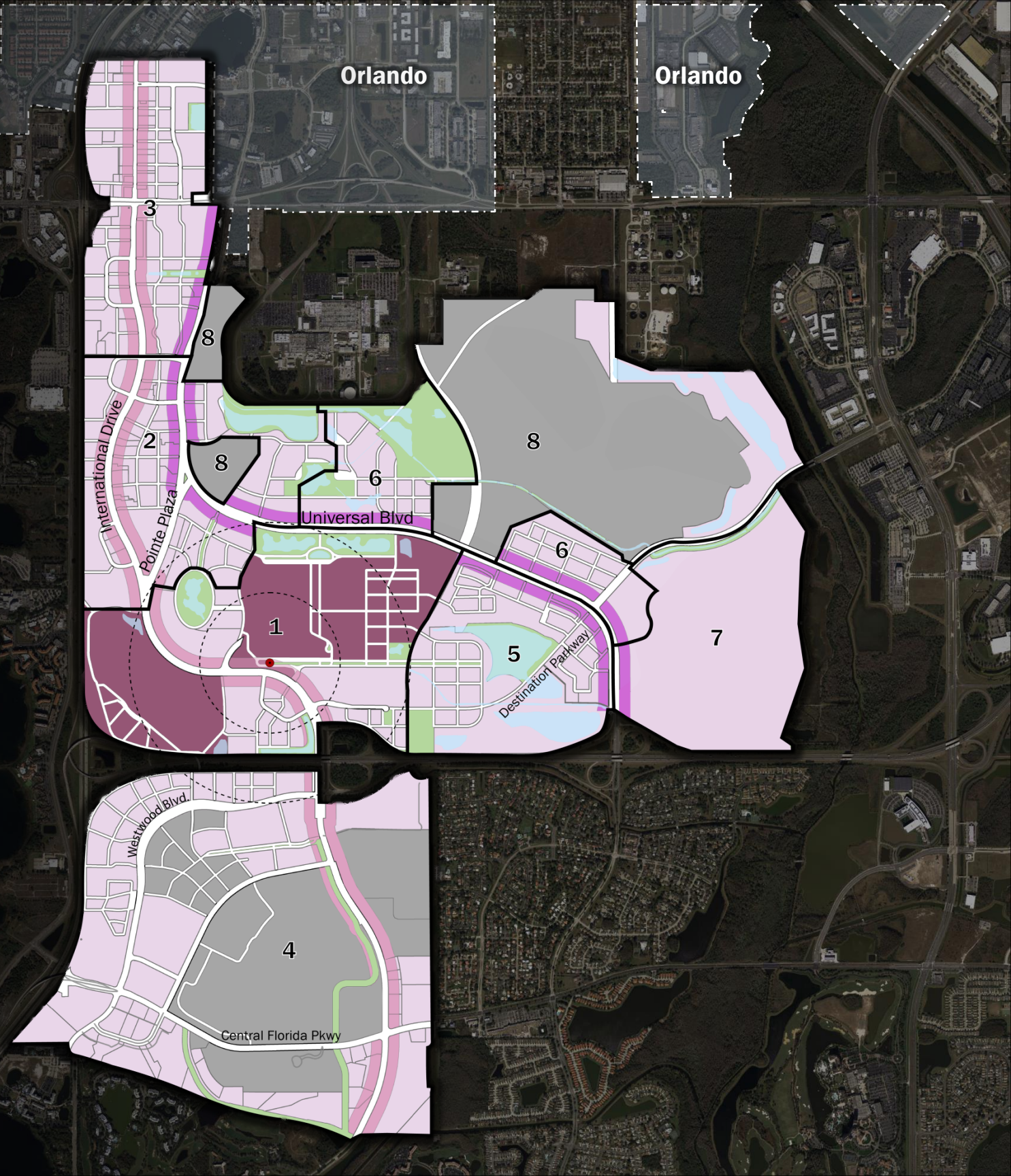
An aerial photograph of the I-Drive District in Orlando, Florida, rendered in a dark, monochromatic style. The image shows a complex network of roads, including major highways like I-4 and I-17, and several large parks and green spaces. The overall tone is dark and atmospheric, with the text 'I-DRIVE DISTRICT' overlaid in the bottom right corner.

I-DRIVE DISTRICT

I-Drive District

Sub-Districts

- 1. Convention Center**
- 2. Retail & Hospitality**
- 3. Entertainment**
- 4. Sea World**
- 5. Destination Parkway**
- 6. Universal Boulevard**
- 7. Rosen & Shingle Creek**
- 8. Universal**



I-Drive District

Sub-Districts

1. Convention Center

Acres: 479.78

Uses: Institutional
Hospitality
Commercial
Open Space



I-Drive District

Sub-Districts

1. Convention Center

2. Retail & Hospitality

Acres: 394.23

Uses: Hospitality
Commercial
Agriculture



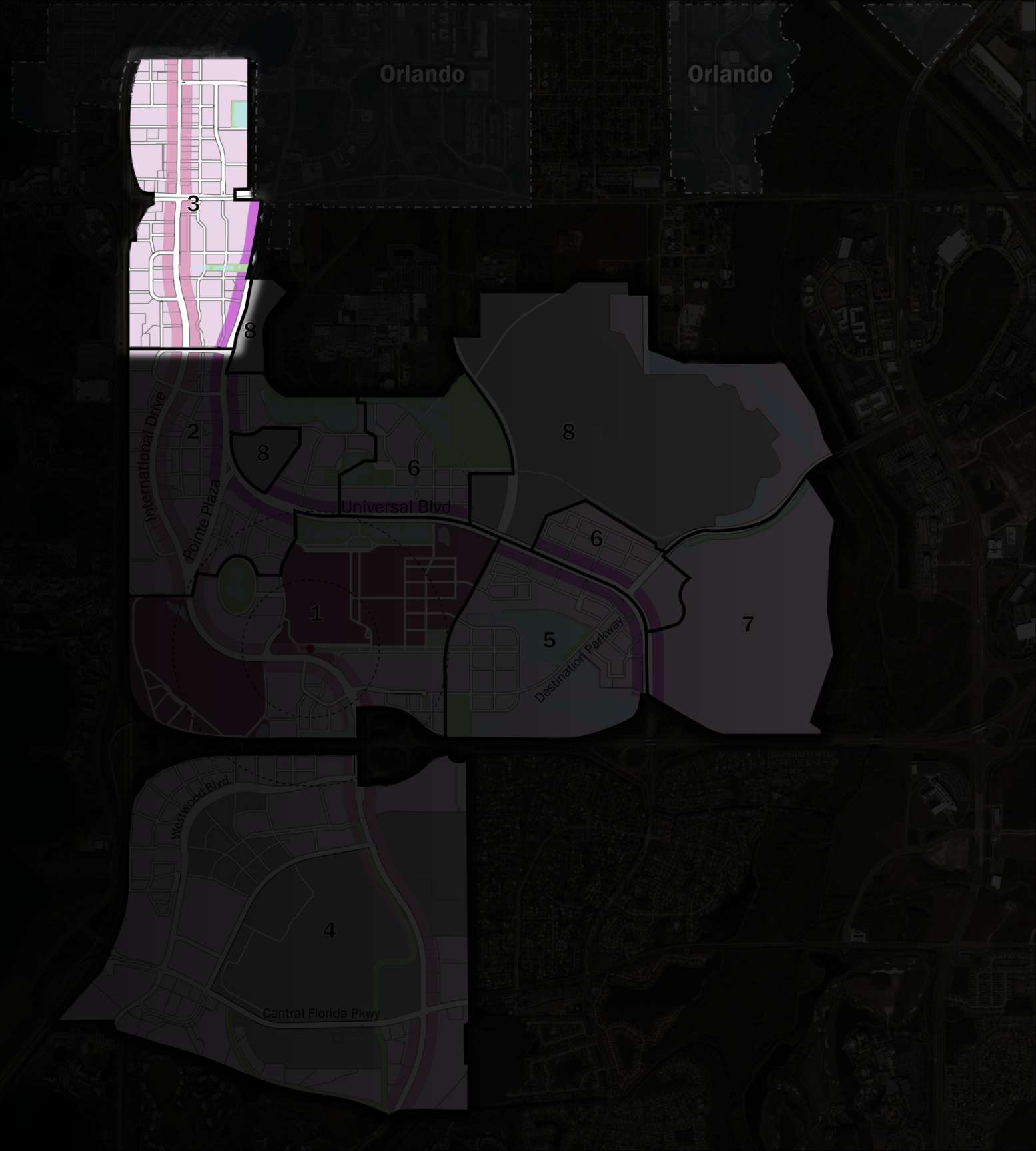
I-Drive District

Sub-Districts

1. Convention Center
2. Retail & Hospitality
3. Entertainment

Acres: 352.51

Uses: Commercial
Hospitality
(Amusement)
Institutional



I-Drive District

Sub-Districts

1. Convention Center
2. Retail & Hospitality
3. Entertainment
4. Sea World

Acres: 889.39

Uses: Commercial
Institutional
Office
Multifamily
Hospitality
Industrial
Agriculture



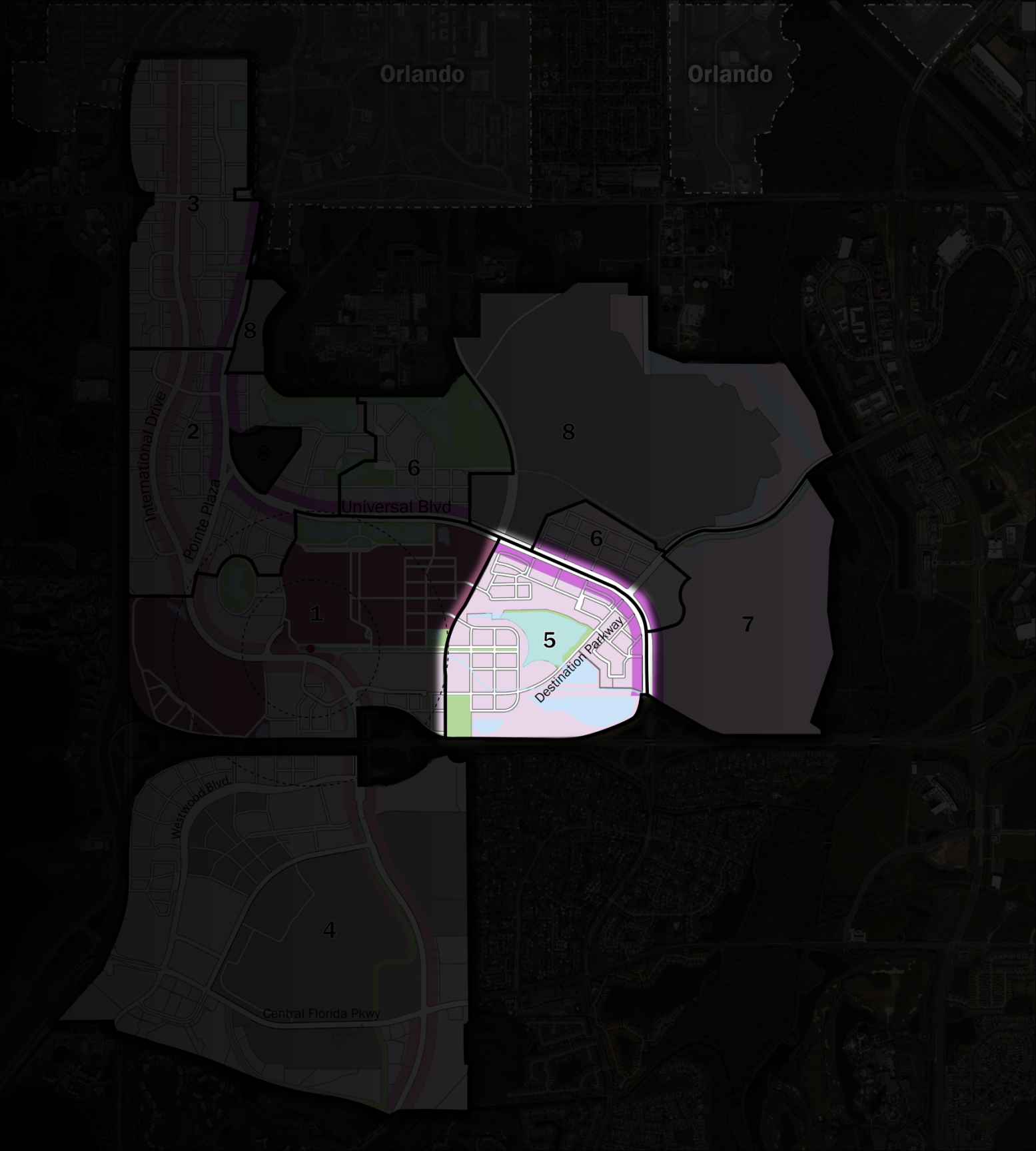
I-Drive District

Sub-Districts

1. Convention Center
2. Retail & Hospitality
3. Entertainment
4. Sea World
- 5. Destination Parkway**

Acres: 312.96

Uses: Institutional
Multifamily
Commercial
Open Space



I-Drive District

Sub-Districts

1. Convention Center
2. Retail & Hospitality
3. Entertainment
4. Sea World
5. Destination Parkway
- 6. Universal Boulevard**

Acres: 319.23

Uses: Agriculture
Institutional
Industrial
Hospitality



I-Drive District

Sub-Districts

1. Convention Center
2. Retail & Hospitality
3. Entertainment
4. Sea World
5. Destination Parkway
6. Universal Boulevard
- 7. Rosen & Shingle Creek**

Acres: 272.59

Uses: Hospitality
Commercial
Open Space



I-Drive District

Sub-Districts

- 1. Convention Center**
- 2. Retail & Hospitality**
- 3. Entertainment**
- 4. Sea World**
- 5. Destination Parkway**
- 6. Universal Boulevard**
- 7. Rosen & Shingle Creek**
- 8. Universal**

Acres: 454.23

Uses: Agriculture



Package Sale Ordinance

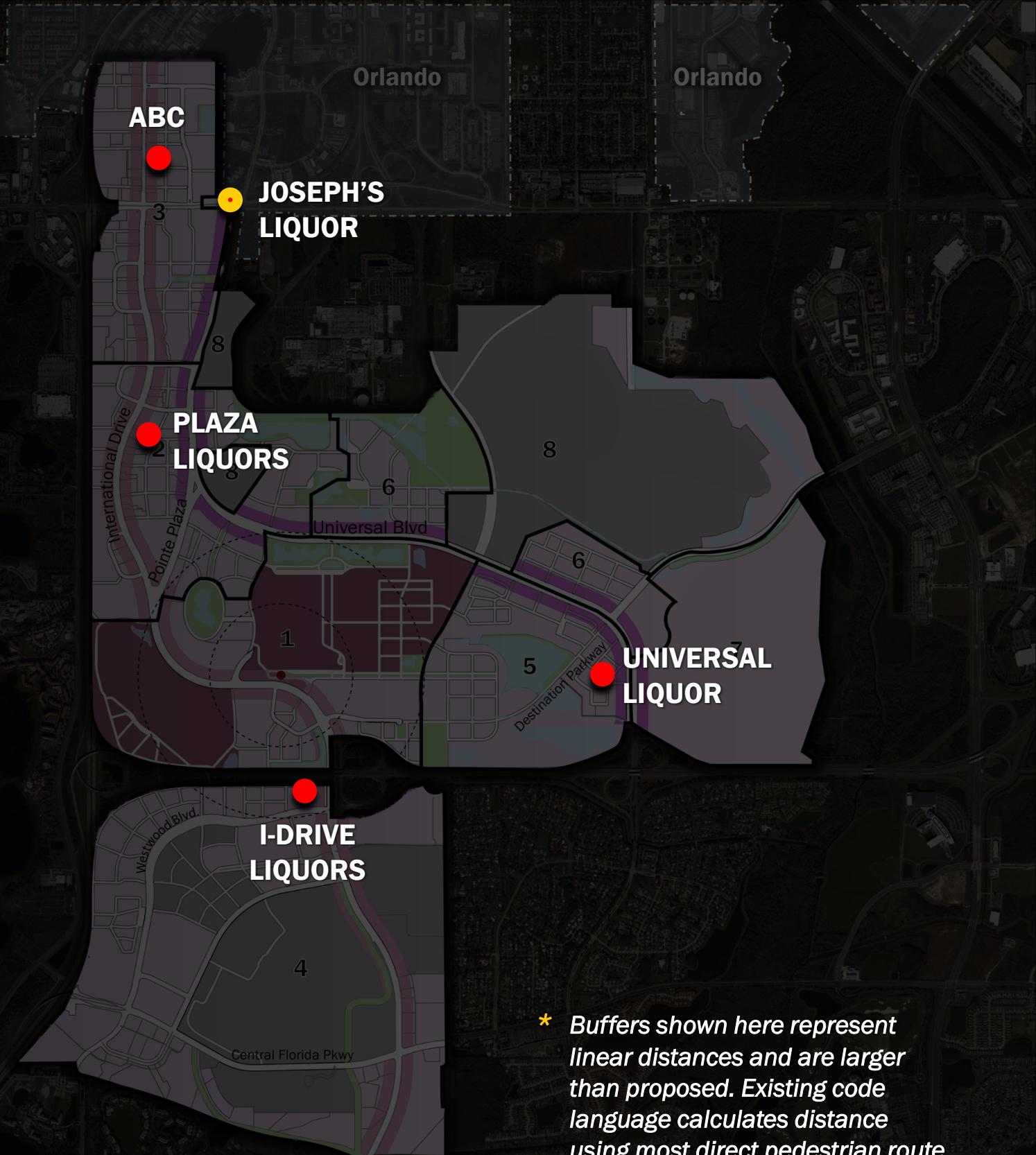
Prohibited Areas for Package Sale

TYPE OF QUOTA LICENSE

- 3PS LICENSES :

Beer, Wine & Liquor, package sales; no consumption on premises

- City of Orlando: Joseph's Liquor



Package Sale Ordinance

Prohibited Areas for Package Sale

EXISTING – Locations of Package Sale Vendors

- 3PS LICENSES :
5,000 ft. Distance Separation

- 750 ft.: Joseph's Liquor



Package Sale Ordinance

Prohibited Areas for Package Sale

EXISTING – Locations of Package Sale Vendors

- 3PS LICENSES :
5,000 ft. Distance Separation
- 750 ft.: Joseph's Liquor



An aerial photograph of a suburban area, showing a mix of residential neighborhoods, commercial centers, and green spaces. The image is darkened to serve as a background for the title.

PACKAGE SALE ORDINANCE

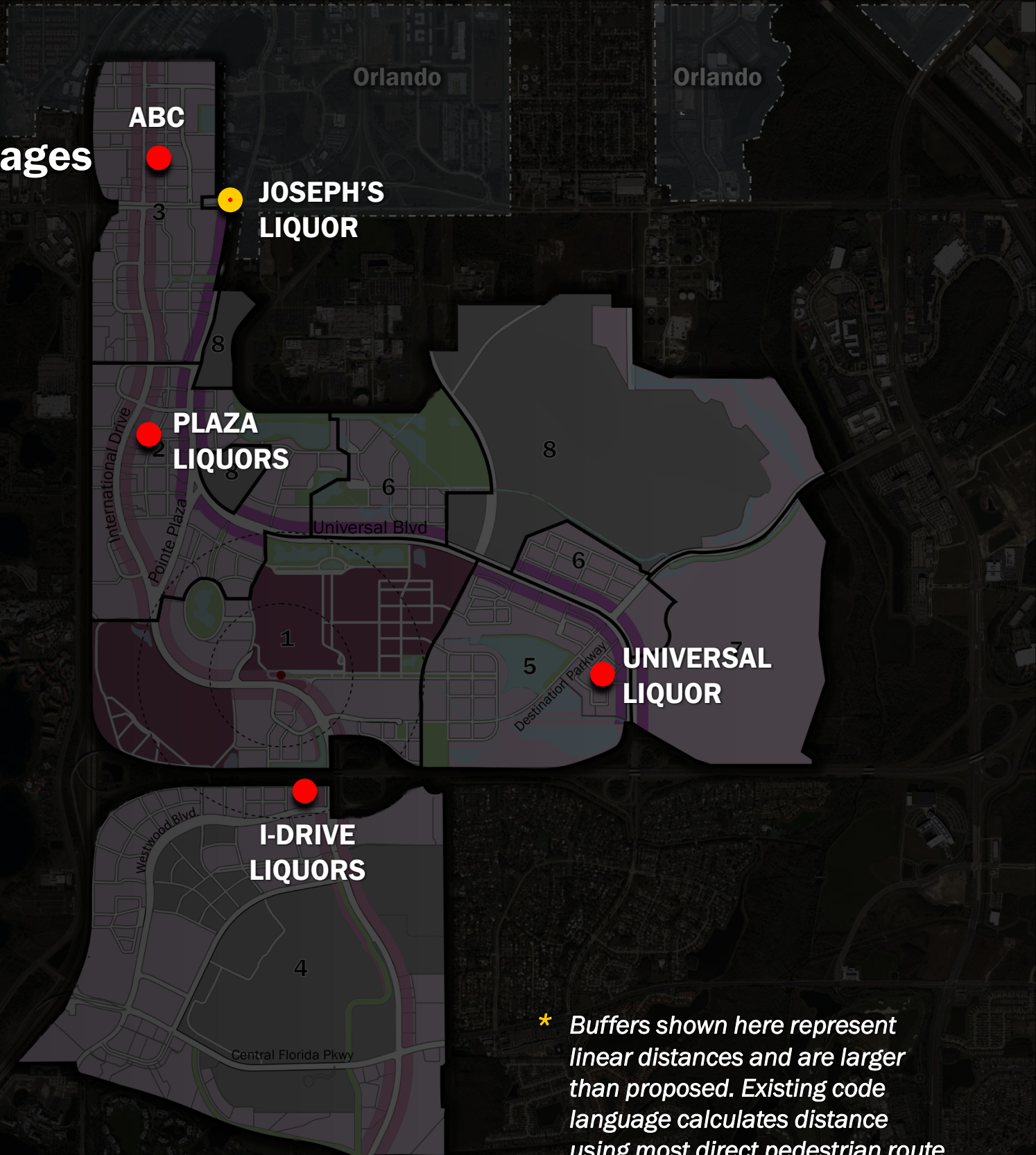
Ordinance – Section 1

Prohibited Areas for Package Sale of Alcoholic Beverages

Sec. 38-1414 (b): *Package Sale Vendor Distance Separation Requirements*

*Subject to Sec. 38-865.d(10)
i-Drive District Overlay Zone*

A Package sale vendor may be permitted to operate its business of package sales at a location no closer than five thousand (5,000) feet of any preexisting package sale vendor's place of business within the unincorporated area of the county, and no closer than seven hundred and fifty (750) feet of any preexisting package sale vendor's place of business within a municipality in the county.



Ordinance – Section 2

Amendments to Uses

Sec. 38-865: *i-Drive District Overlay Zone*

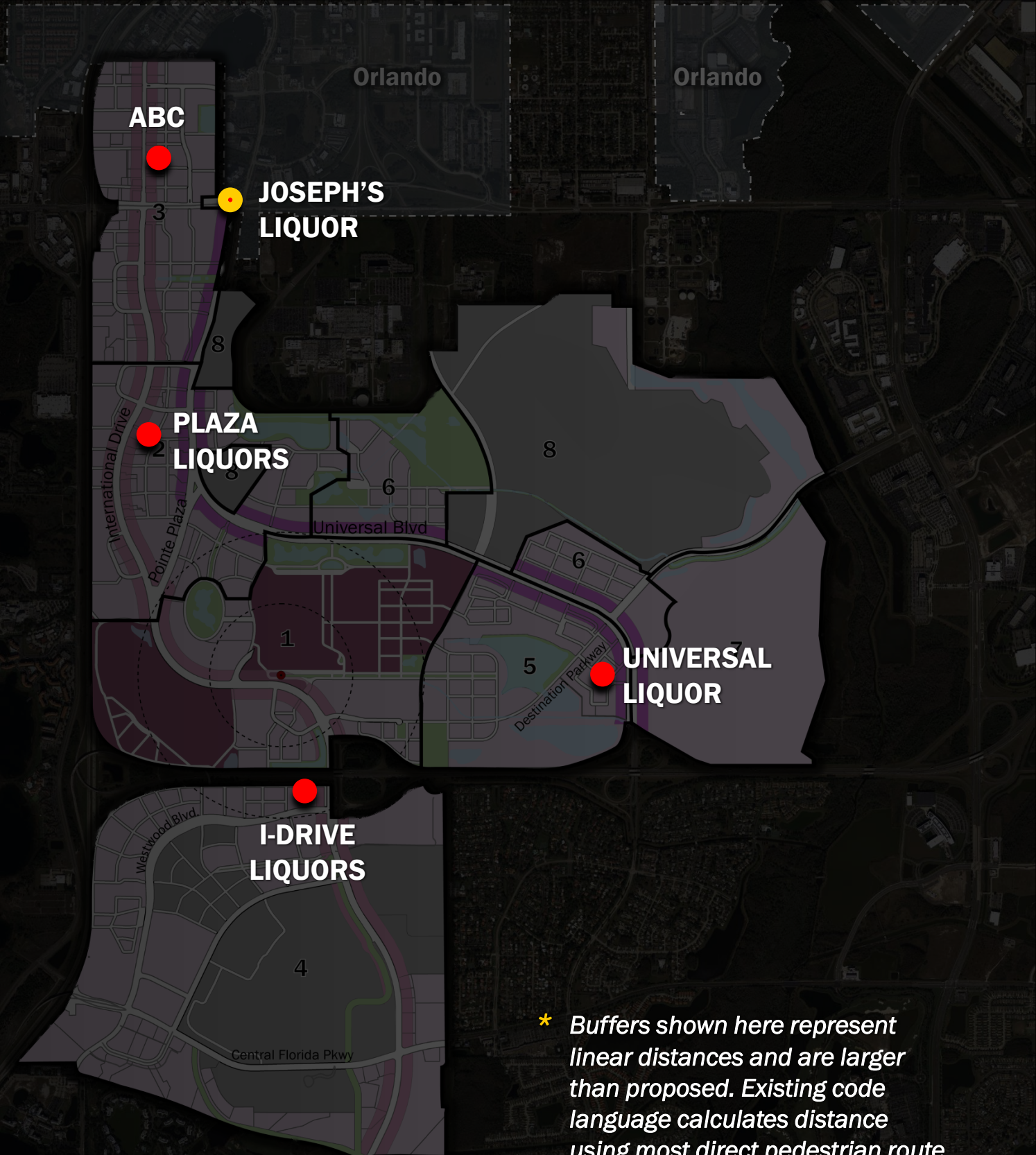
a) Table (27): (Neighborhood Retail Uses) in Subsection “c” (Use Table)

Amended by deleting:

~~“Alcohol Sales (off site consumption)”~~

Replacing it with:

“Package Sale Vendor”



* Buffers shown here represent linear distances and are larger than proposed. Existing code language calculates distance using most direct pedestrian route.

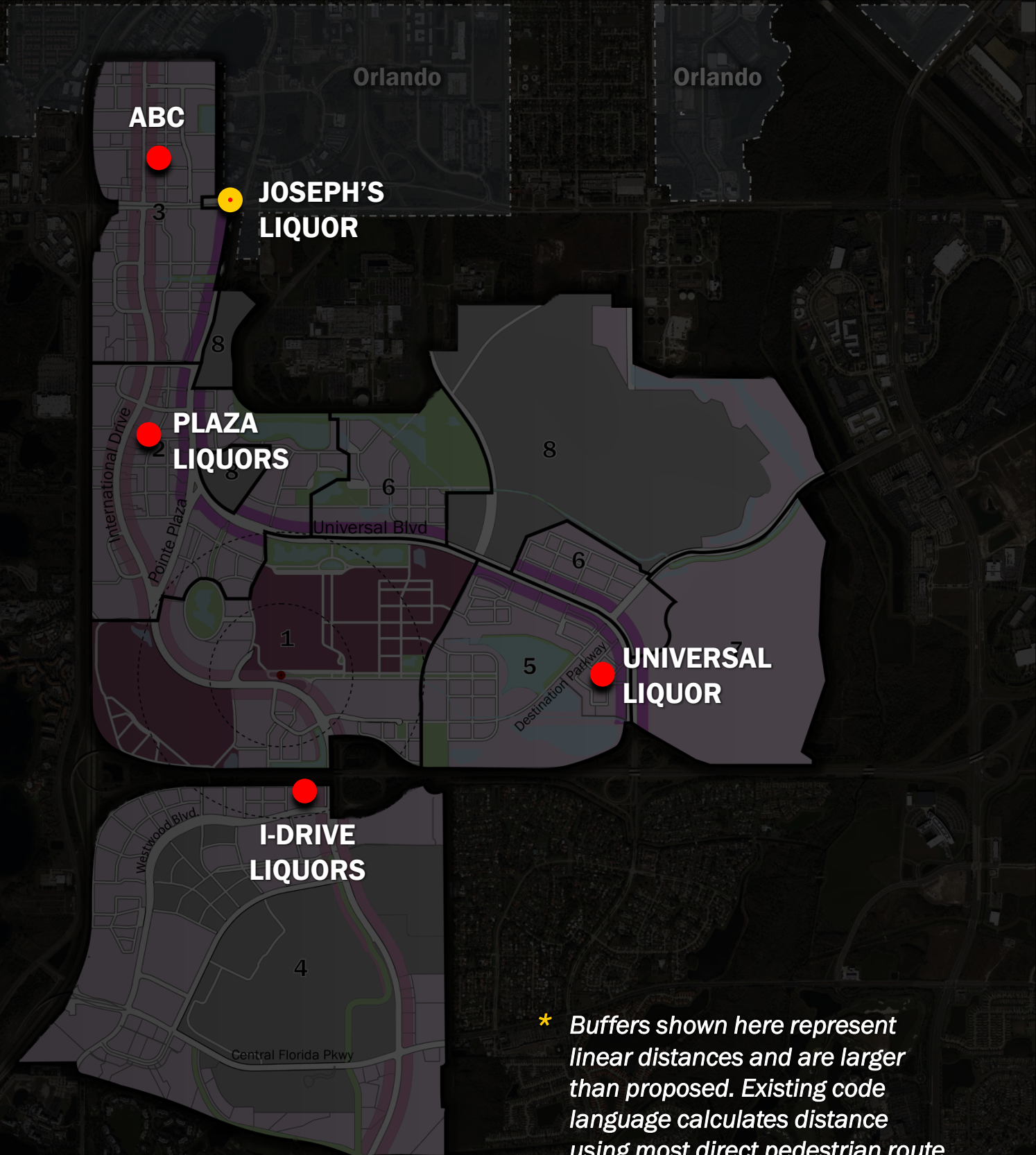
Ordinance – Section 2

Amendments to Uses

Sec. 38-865: *i-Drive District Overlay Zone*

b) Subsection d(10): Package Sale Vendors

No more than **four (4) package sale vendors** may be permitted within the I-Drive District Overlay Zone. **Only one (1) package sale vendors** may be located within



* Buffers shown here represent linear distances and are larger than proposed. Existing code language calculates distance using most direct pedestrian route.

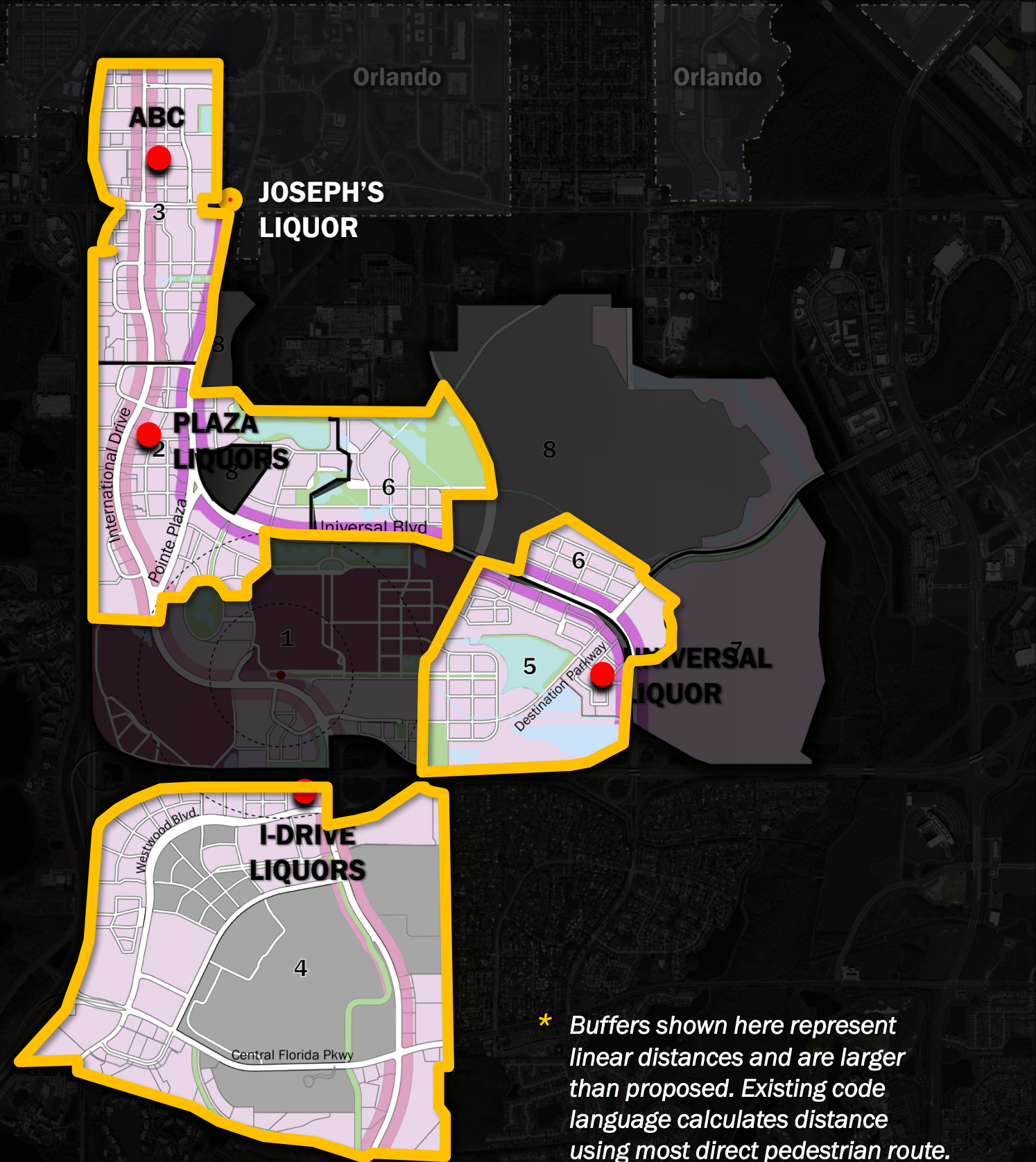
Ordinance – Section 2

Amendments to Uses

Sec. 38-865: *i-Drive District Overlay Zone*

b) Subsection d(10): Package Sale Vendors

No more than **four (4) package sale vendors** may be permitted within the I-Drive District Overlay Zone. **Only one (1) package sale vendors** may be located within **Sub-Districts 2, 3, 4 and 5 or 6** provided that no package sale vendor within a sub-district may be located within



* Buffers shown here represent linear distances and are larger than proposed. Existing code language calculates distance using most direct pedestrian route.

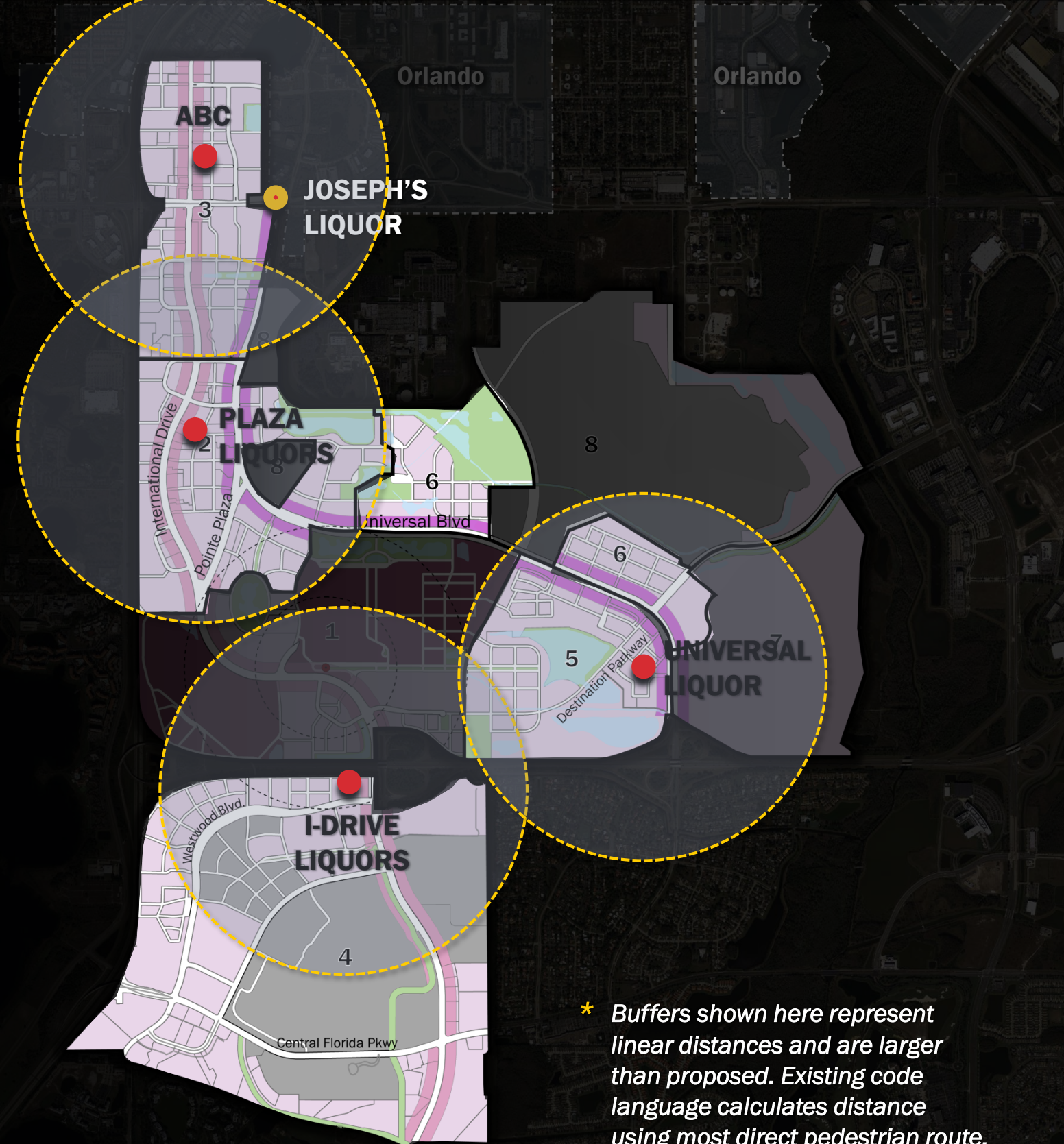
Ordinance – Section 2

Amendments to Uses

Sec. 38-865: *i-Drive District Overlay Zone*

b) Subsection d(10): Package Sale Vendors

No more than **four (4) package sale vendors** may be permitted within the I-Drive District Overlay Zone. **Only one (1) package sale vendors** may be located within **Sub-Districts 2, 3, 4 and 5 or 6** provided that no package sale vendor within a sub-district may be located within three thousand five hundred (3,500) feet of a package sale vendor in another sub-district.



* Buffers shown here represent linear distances and are larger than proposed. Existing code language calculates distance using most direct pedestrian route.

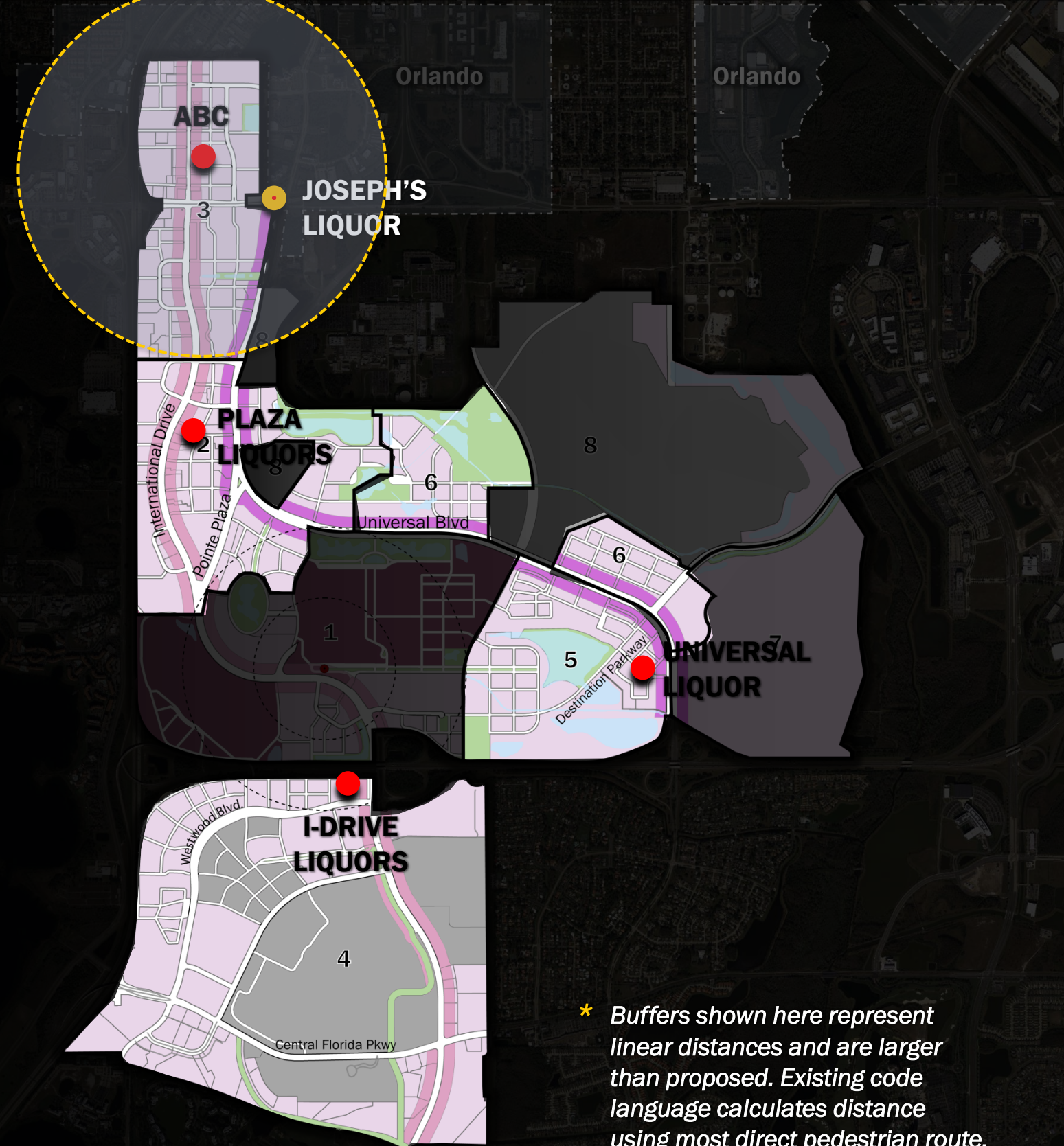
Ordinance – Section 2

Amendments to Uses

Sec. 38-865: *i-Drive District Overlay Zone*

b) Subsection d(10): Package Sale Vendors

The package sale vendor **existing within Sub-District 3** as of the date of this ordinance, may close its location and relocate once to a location **outside of the I-Drive District Overlay Zone** anywhere within unincorporated Orange County so long as such relocation is **no closer than three thousand five hundred (3,500) feet** of any existing package sales vendor in the county.



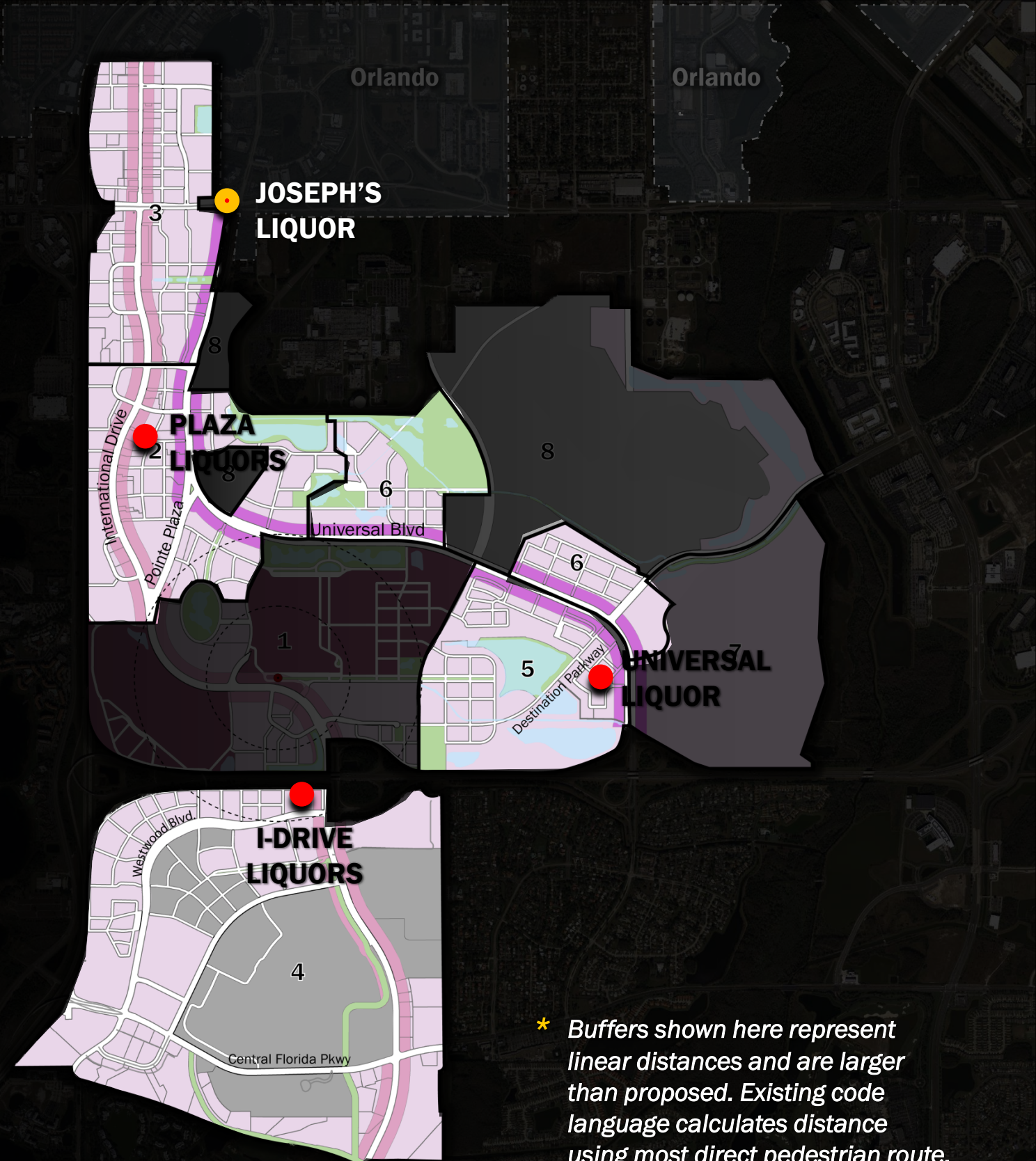
Ordinance – Section 2

Amendments to Uses

Sec. 38-865: *i-Drive District Overlay Zone*

b) Subsection d(10): Package Sale Vendors

The package sale vendor **existing within Sub-District 3** as of the date of this ordinance, may close its location and relocate once to a location **outside of the I-Drive District Overlay Zone** anywhere within unincorporated Orange County so long as such relocation is **no closer than three thousand five hundred (3,500) feet** of any existing package sales vendor in the county.



Ordinance – Section 2

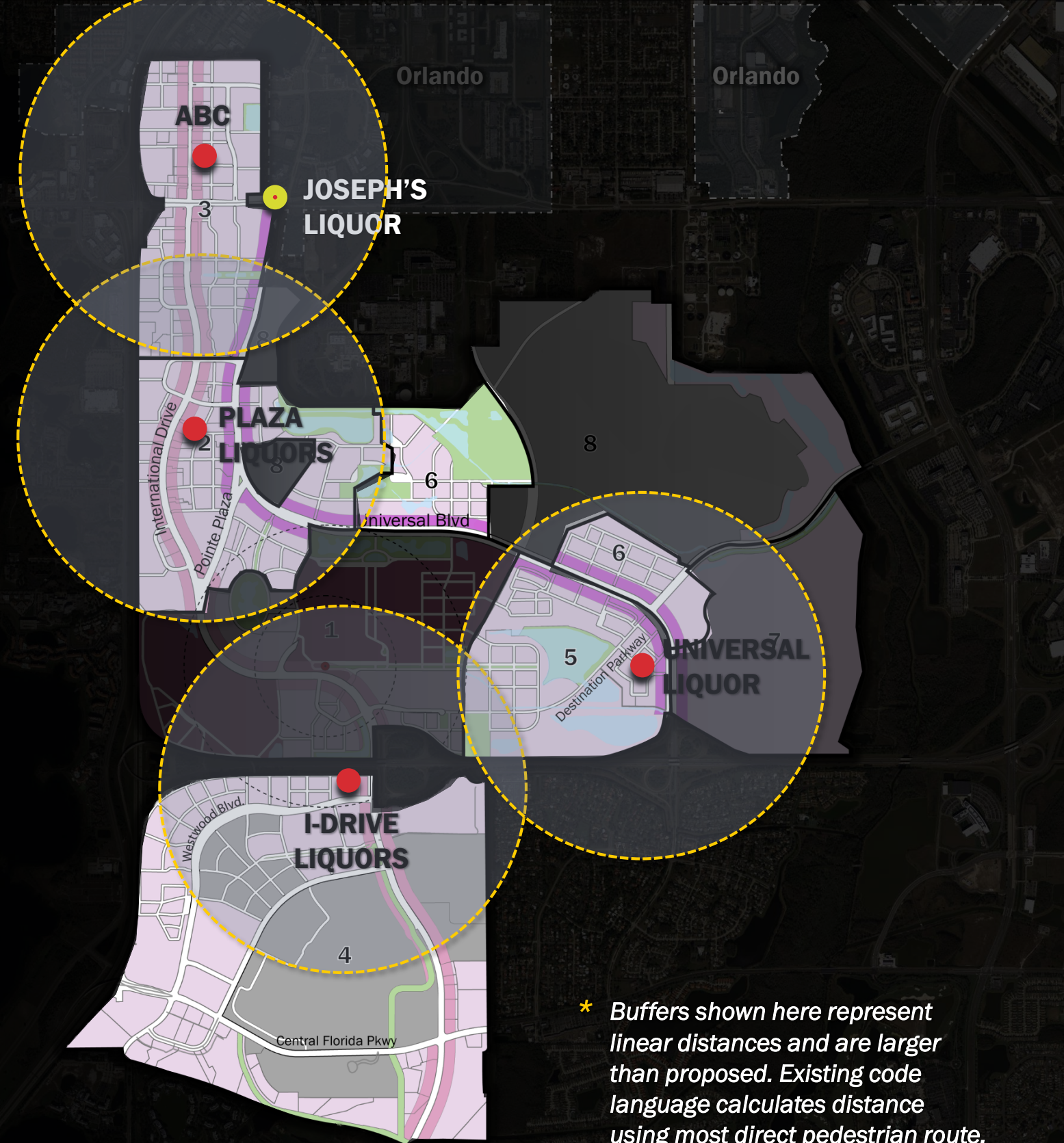
Amendments to Uses

Sec. 38-865: *i-Drive District Overlay Zone*

b) Subsection d(10): Package Sale Vendors

Distance as referenced in this subsection d(10) shall be measured as described in Section 38-1414(e):

Measured from main entrance of respective vendors by following the shortest route of ordinary pedestrian travel along public thoroughfare



* Buffers shown here represent linear distances and are larger than proposed. Existing code language calculates distance using most direct pedestrian route.

Ordinance – Sections 3, 4 & 5

Amendments to Definitions

Sec. 38-869: *i-Drive District Overlay Zone*

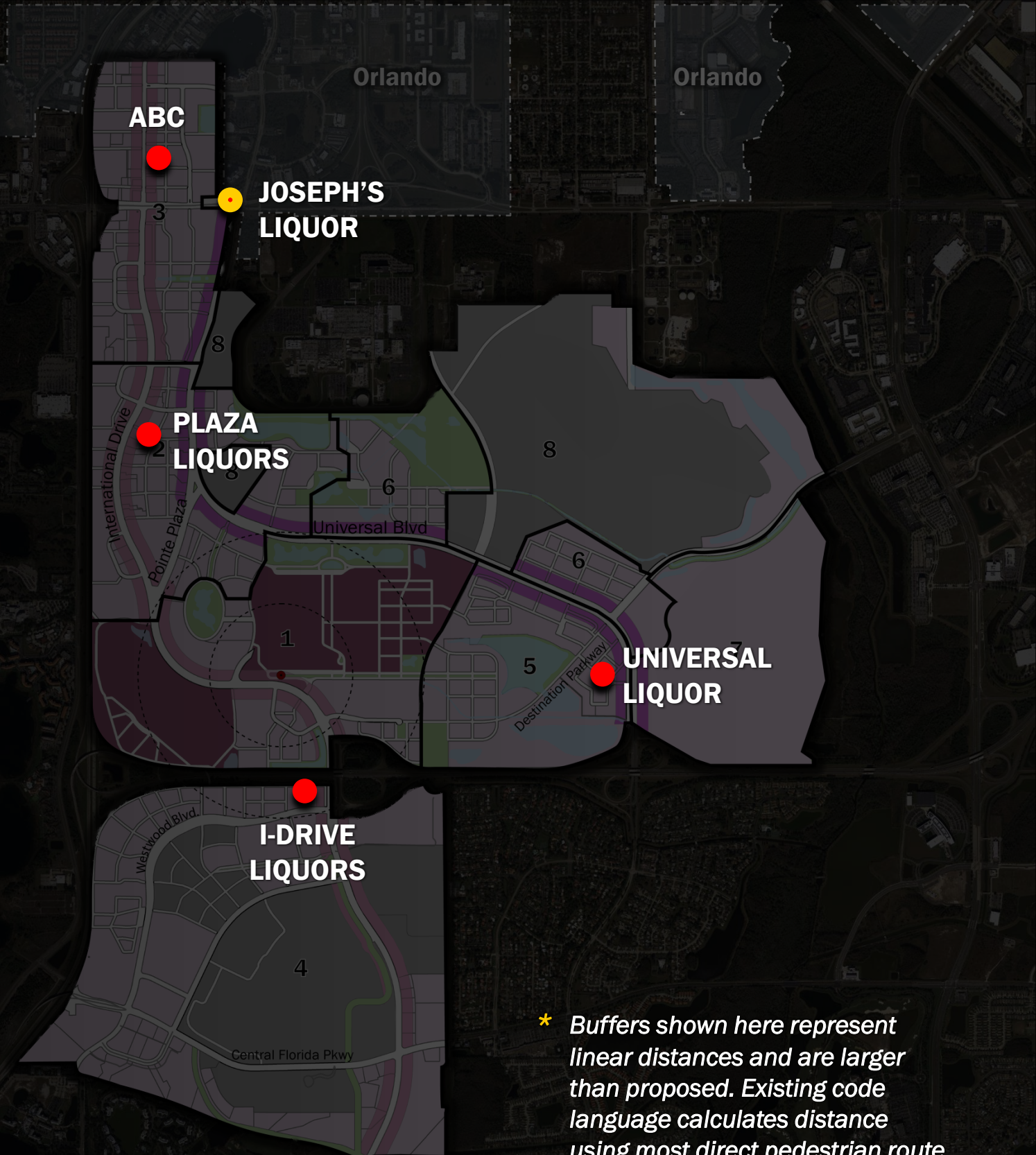
a) Subsection b: Defined Terms

Amended by defining:
“Package Sale Vendor”

Subsection b(34) to read:
Package Sale Vendor: A Package Sale Vendor means as defined at Section 38-1414(a)

Section 4: Provides for **Severability**

Section 5: Provides for an **Effective Date**



An aerial photograph of a suburban area, showing a mix of residential neighborhoods, commercial centers, and green spaces. The image is dark and serves as a background for the text.

REQUESTED ACTION

No Requested Action

***This is the 1st of 2 required Public Hearings.
The second hearing to consider adoption of
the Ordinance will be held at 2:00 PM on
October 30th, 2018.***