

OFFICE OF COMPTROLLER



ORANGE
COUNTY
FLORIDA

Phil Diamond, CPA
County Comptroller as
Clerk of the Board of County Commissioners
201 South Rosalind Avenue
Post Office Box 38
Orlando, FL 32802
Telephone: (407) 836-7300
Fax: (407) 836-5359

August 23, 2019

Ms. Julie Alber
Development Engineering, BCC

Dear Ms. Alber:

Enclosed is the Resolution Granting Petition to Vacate # 18-05-017 with attachments for recording with Official Records.

Petition to Vacate # 18-05-017 was approved by the Board of County Commissioners at its regular meeting of August 6, 2019. After recording the resolution with attachments with Official Records, please send a copy of the recorded document to the applicant, along with the staff noted below:

Rick Singh, Orange County Property Appraiser, c/o Rocco Campanale, Manager Real Estate Services, Property Appraiser's Office
Scott Randolph, Orange County Tax Collector
Paul Sladek, Real Estate Management Division, BCC
Kyle Quackenbush, Manager, Official Records Department

Sincerely,

Phil Diamond, County Comptroller
As Clerk of the Board of County Commissioners

By: for Jessica Vaughn
Deputy Clerk

ks:nr

APPROVED
BY ORANGE COUNTY BOARD
OF COUNTY COMMISSIONERS
AUG 06 2019

RESOLUTION GRANTING PETITION TO VACATE # 18-05-017

WHEREAS, pursuant to procedures adopted by the Board of County Commissioners, a petition was filed with the Board to vacate that certain **variable width drainage and access easement containing approximately 3.64 acres** in Orange County, Florida, as described in attachment.

WHEREAS, notice of a public hearing before the Board of County Commissioners on **August 6, 2019** was published in the **Orlando Sentinel**, a newspaper of general circulation in Orange County, Florida, one time at least two weeks prior to the date for the hearing; and

WHEREAS, the Board finds that the vacating of a **variable width drainage and access easement containing approximately 3.64 acres** will not operate to the detriment of Orange County or the public subject to the recordation of a temporary drainage easement over the area requested for vacation which will terminate at the time of platting.

THEREFORE, BE IT RESOLVED BY THE BOARD OF COUNTY COMMISSIONERS OF ORANGE COUNTY:

The county road, right-of-way, easement, or park described above is vacated as of this date and Orange County renounces any rights in it.

RESOLVED THIS 6TH DAY OF AUGUST 2019.

BOARD OF COUNTY COMMISSIONERS
ORANGE COUNTY, FLORIDA

By: _____

Byron Brooks
County Mayor



ATTEST:

Phil Diamond, County Comptroller
As Clerk of the Board of County Commissioners
Orange County, Florida

By: _____

Natasha Ramirez
Deputy Clerk

nr/np

Attachments: Legal property description

Proof of publication of the *Orlando Sentinel* regarding the BCC notice of public hearing

Proof of publication of the *Orlando Business Journal* regarding the BCC notice of adoption

SKETCH OF DESCRIPTION SCHEDULE "A"

PROJECT NAME: WETHERBEE ROAD
PARCEL I.D. No.: 20-24-30-0000-00-004
OWNER: EIDSON, GEORGE T. JR. TRUSTEE
ESTATE: PERMANENT DRAINAGE EASEMENT

LEGAL DESCRIPTION:

THAT PART OF:

THOSE LANDS RECORDED IN OFFICIAL RECORDS BOOK 4206, PAGE 2447 OF THE PUBLIC RECORDS OF ORANGE COUNTY, FLORIDA BEING NE 1/4 OF THE NW 1/4 AND SE 1/4 OF THE NW 1/4 AND SW 1/4 OF THE NE 1/4 OF SECTION 20, TOWNSHIP 24 SOUTH, RANGE 30 EAST (LESS THE WEST 330 FEET OF THE EAST 1/2 OF THE NW 1/4) SUBJECT TO ROAD RIGHT OF WAY ON NORTH. LESS: BEGINNING AT NE CORNER OF THE NE 1/4 OF THE NW 1/4 OF SAID SECTION, RUN WEST 270 FEET; THENCE SOUTH 322.666 FEET; THENCE EAST 270 FEET; THENCE NORTH 322.666 FEET TO P.O.B. SAID PORTION OF LAND

DESCRIBED AS FOLLOWS:

COMMENCE AT THE NORTHEAST CORNER OF THE NORTHWEST 1/4 OF SAID SECTION 20 THENCE S89°25'14"W ALONG THE NORTH LINE OF THE NORTHWEST 1/4 OF SAID SECTION 20, A DISTANCE OF 834.93 FEET FOR A POINT OF BEGINNING; THENCE DEPARTING SAID NORTH LINE OF THE NORTHWEST 1/4 S00°34'46"E A DISTANCE OF 30.00 FEET; THENCE S89°25'14"W A DISTANCE OF 60.00 FEET; THENCE N00°34'46"W A DISTANCE OF 20.00 FEET; THENCE S89°25'14"W A DISTANCE OF 65.60 FEET; THENCE S00°50'22"E A DISTANCE OF 1313.23 FEET TO A POINT ON THE NORTH LINE OF THE SOUTHEAST 1/4 OF THE NORTHWEST 1/4 OF SAID SECTION 20; THENCE ALONG SAID NORTH LINE OF THE SOUTHEAST 1/4 OF THE NORTHWEST 1/4 N89°39'13"E A DISTANCE OF 322.68 FEET; THENCE DEPARTING SAID NORTH LINE OF THE SOUTHEAST 1/4 OF THE NORTHWEST 1/4 S00°50'22"E A DISTANCE OF 180.37 FEET; THENCE S44°09'38"W A DISTANCE OF 299.67 FEET; THENCE S89°09'38"W A DISTANCE OF 140.77 FEET TO A POINT ON THE EAST LINE OF THE WEST 330 FEET OF THE EAST 1/2 OF THE NORTHWEST 1/4 OF SAID SECTION 20; THENCE ALONG SAID EAST LINE N00°50'22"W A DISTANCE OF 1718.42 FEET TO A POINT ON SAID NORTH LINE OF THE NORTHWEST 1/4; THENCE ALONG SAID NORTH LINE OF THE NORTHWEST 1/4 N89°25'14"E A DISTANCE OF 155.65 FEET TO THE POINT OF BEGINNING.

CONTAINING 3.640 ACRES MORE OR LESS.

SURVEYOR'S REPORT:

1. BEARINGS ARE ASSUMED ALONG THE NORTH LINE OF THE NORTHWEST 1/4 OF SECTION 20, TOWNSHIP 24 SOUTH, RANGE 30 EAST BEING S89°25'14"W.
2. THIS SKETCH OF DESCRIPTION WAS PREPARED WITHOUT BENEFIT OF A TITLE SEARCH. OWNERSHIP OF THE SUBJECT PARCEL IS BASED ON ORANGE COUNTY PROPERTY APPRAISER TAX ROLLS AND LAST DEED OF RECORD AS LISTED THEREIN.

ABBREVIATIONS LEGEND:

C/L CENTER LINE	Δ DELTA ANGLE
(C) CALCULATED	R RADIUS
L.S. LICENSED SURVEYOR	L LENGTH
L.B. LICENSED BUSINESS	CB CHORD BEARING
NO. NUMBER	S.R. STATE ROAD
ORB OFFICIAL RECORD BOOK	C.R. COUNTY ROAD
PIN PARCEL IDENTIFICATION NUMBER	B/L BASE LINE
PG. PAGE	NTC NON TANGENT CURVE
POB POINT OF BEGINNING	P.B. PLAT BOOK
POC POINT OF COMMENCEMENT	PC POINT OF CURVATURE
P.S.M. PROFESSIONAL SURVEYOR & MAPPER	PT POINT OF TANGENCY
PIN PARCEL IDENTIFICATION NUMBER	RGE RANGE
FKA FORMALLY KNOWN AS	R/W RIGHT OF WAY
	SEC SECTION
	TWP TOWNSHIP

LOCHRANE ENGINEERING, INC.
L.B. No. 2856



THOMAS J. YOCUM P.S.M. No. 5653

- NOT VALID WITHOUT THE SIGNATURE AND THE ORIGINAL
RAISED SEAL OF A FLORIDA LICENSED SURVEYOR AND MAPPER -

THIS IS NOT A BOUNDARY SURVEY

Project Name: Wetherbee Road

LOCHRANE

Consulting Engineers • Surveyors
Orlando • Gainesville

201 South Bumby Avenue, Orlando, Florida 32803 (407) 896-3317

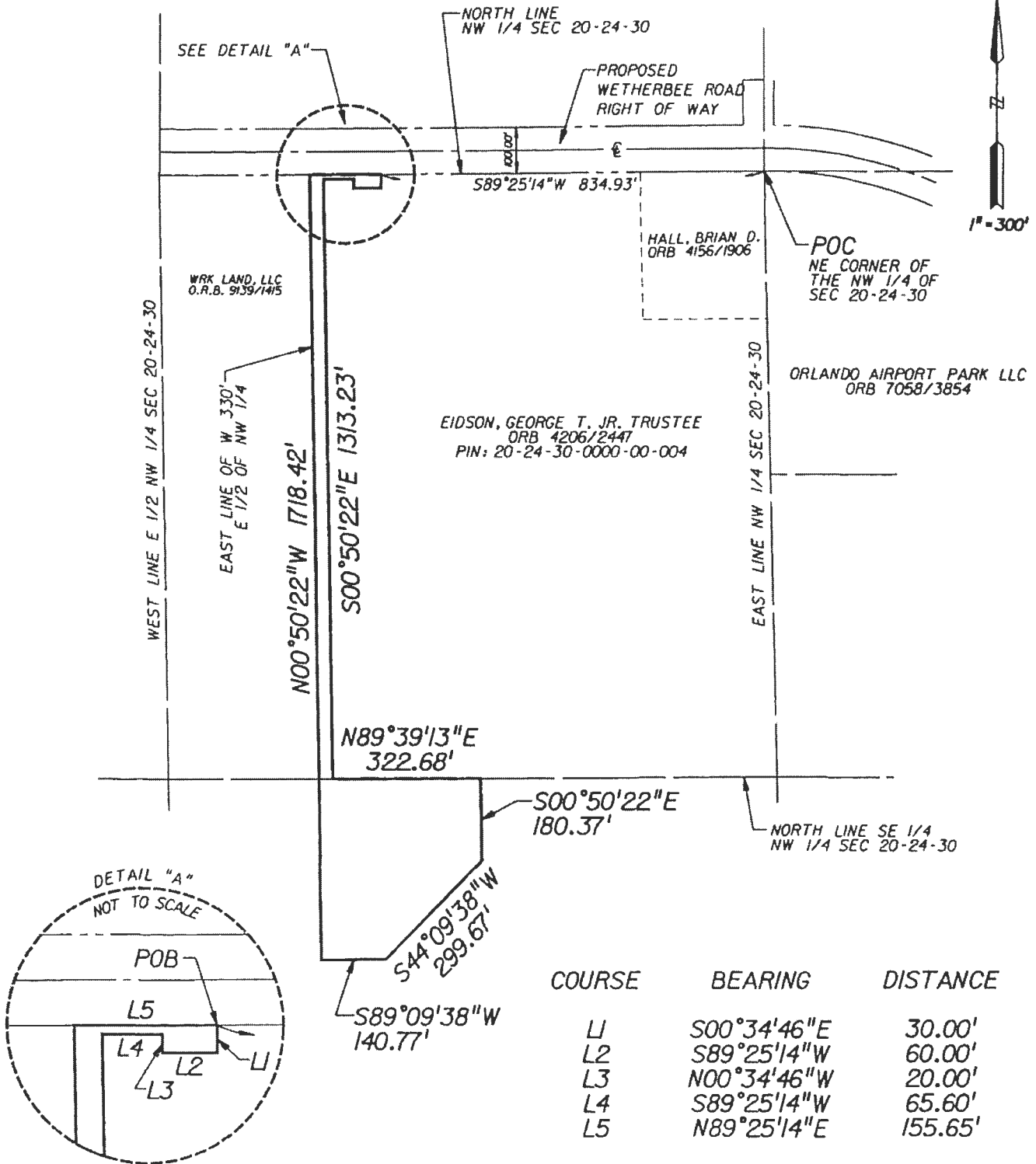
PREPARED FOR: ORANGE COUNTY, FLORIDA

DATE:	04/03/07	DRAWN BY:	SPP
REVISED:	10/25/07	JOB No.:	0013813
SCALE:	N/A	SHEET	1 OF 2

R:\SURVEY\1087\2000\0013813\WETHERBEE\PHASE III\13.P3D - 2.DGN

SKETCH OF DESCRIPTION

SCHEDULE "A"



THIS IS NOT A BOUNDARY SURVEY

DATE:	04/03/07	DRAWN BY:	SPP
REVISED:	10/25/07	JOB No.:	00138J3
SCALE:	1" = 300'	SHEET	2 OF 2