

*Board of County Commissioners*

# Public Hearings

**December 1, 2020**



## **Waterford Lakes Multi-Family Planned Development / Land Use Plan**

<b>Case:</b>	CDR-20-07-202
<b>Project Name:</b>	Waterford Lakes Multi-Family PD
<b>Applicant:</b>	Brooks Stickler, Kimley-Horn & Associates, Inc.
<b>District:</b>	4
<b>Acreage:</b>	10.08 gross acres
<b>Location:</b>	12400 and 12464 E. Colonial Drive, or generally located south of E. Colonial Drive and east of Woodbury Road
<b>Request:</b>	To adjust the location of the southern access and request five (5) waivers from Orange County Code related to setbacks, parking space size, landscaping, and recreation requirements.



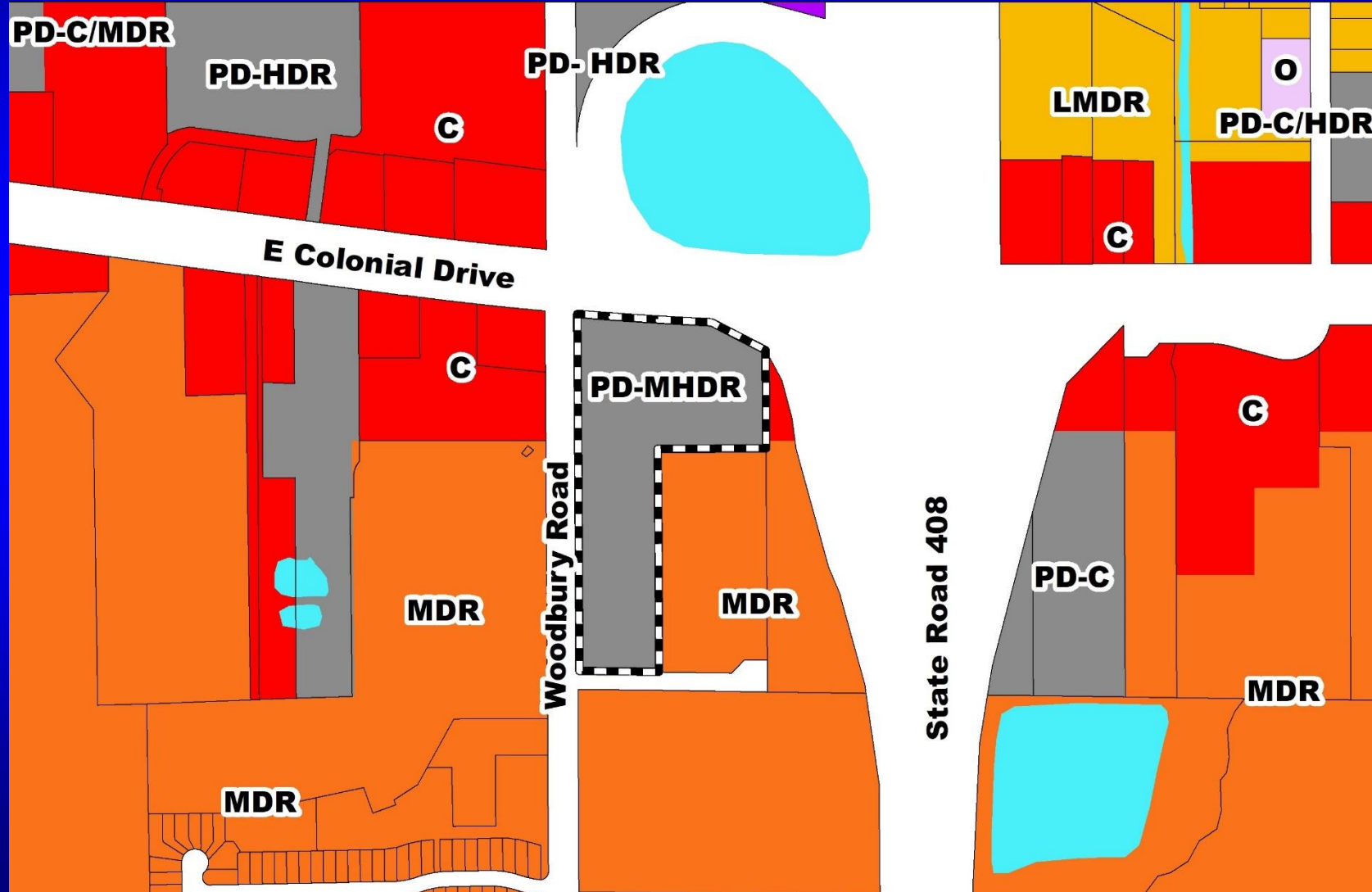
# **Waterford Lakes Multi-Family PD / Waterford Lakes Multi-Family Development Plan**

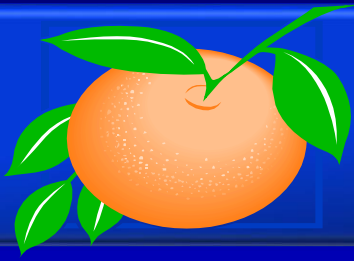
<b>Case:</b>	DP-19-12-419
<b>Project Name:</b>	Waterford Lakes Multi-Family PD / Waterford Lakes Multi-Family DP
<b>Applicant:</b>	Brooks Stickler, Kimley-Horn & Associates, Inc.
<b>District:</b>	4
<b>Acreage:</b>	10.08 gross acres
<b>Location:</b>	12400 and 12464 E. Colonial Drive, or generally located south of E. Colonial Drive and east of Woodbury Road
<b>Request:</b>	To construct 255 multi-family residential dwelling units on a total of 10.08 acres.



# Waterford Lakes Multi-Family PD / Waterford Lakes Multi-Family Development Plan

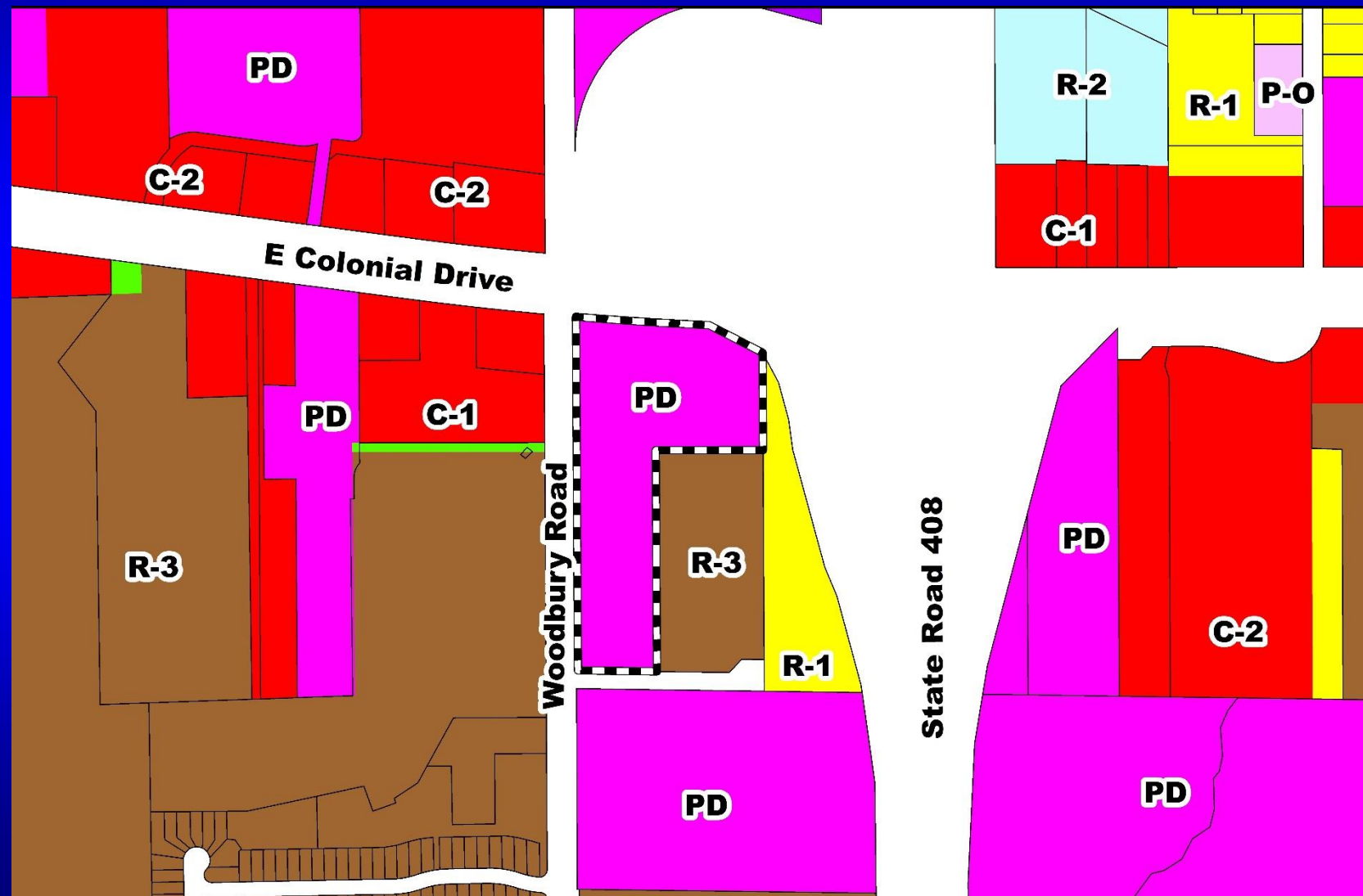
## Future Land Use Map





# Waterford Lakes Multi-Family PD / Waterford Lakes Multi-Family Development Plan

## Zoning Map

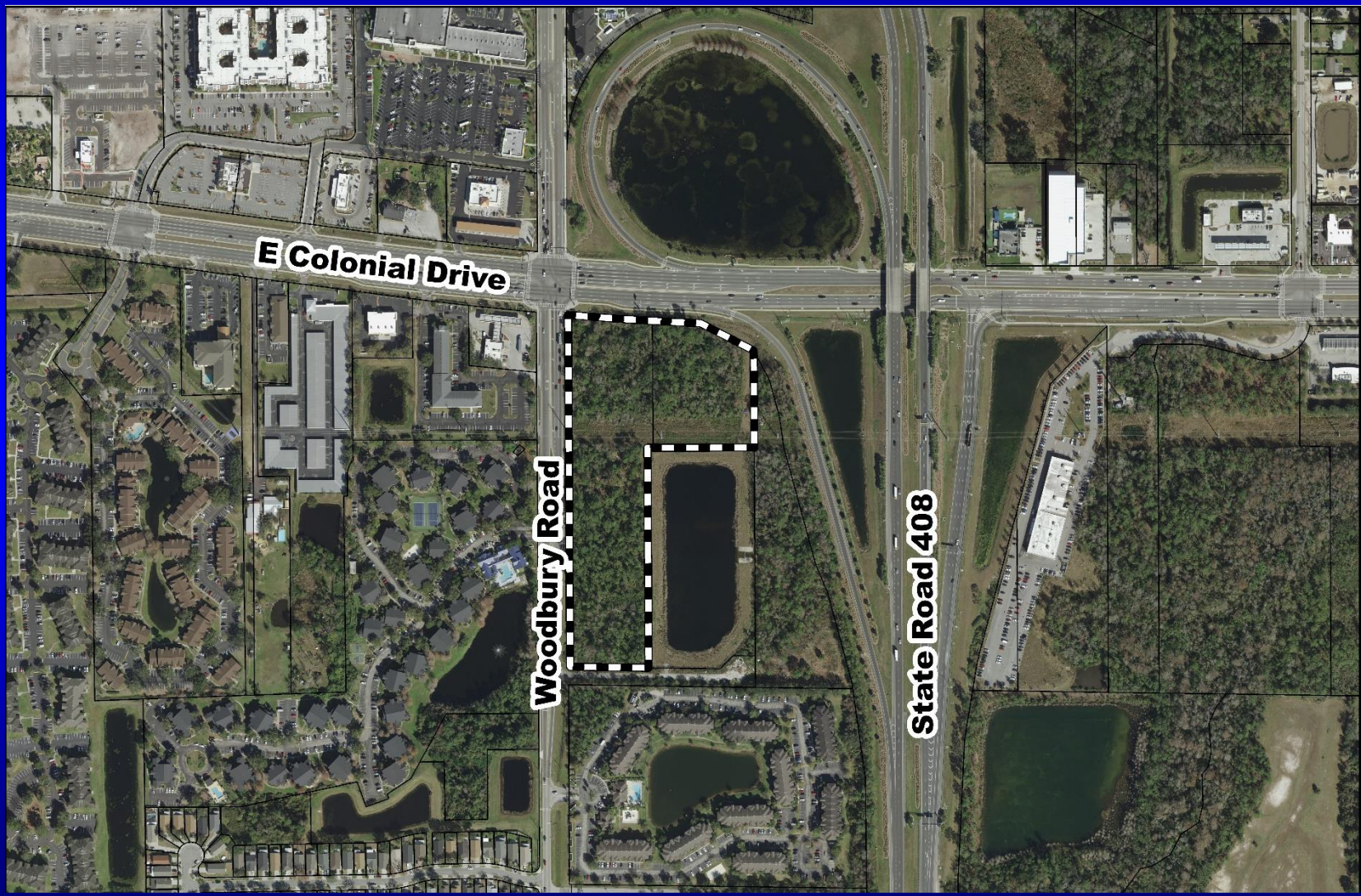






# Waterford Lakes Multi-Family PD / Waterford Lakes Multi-Family Development Plan

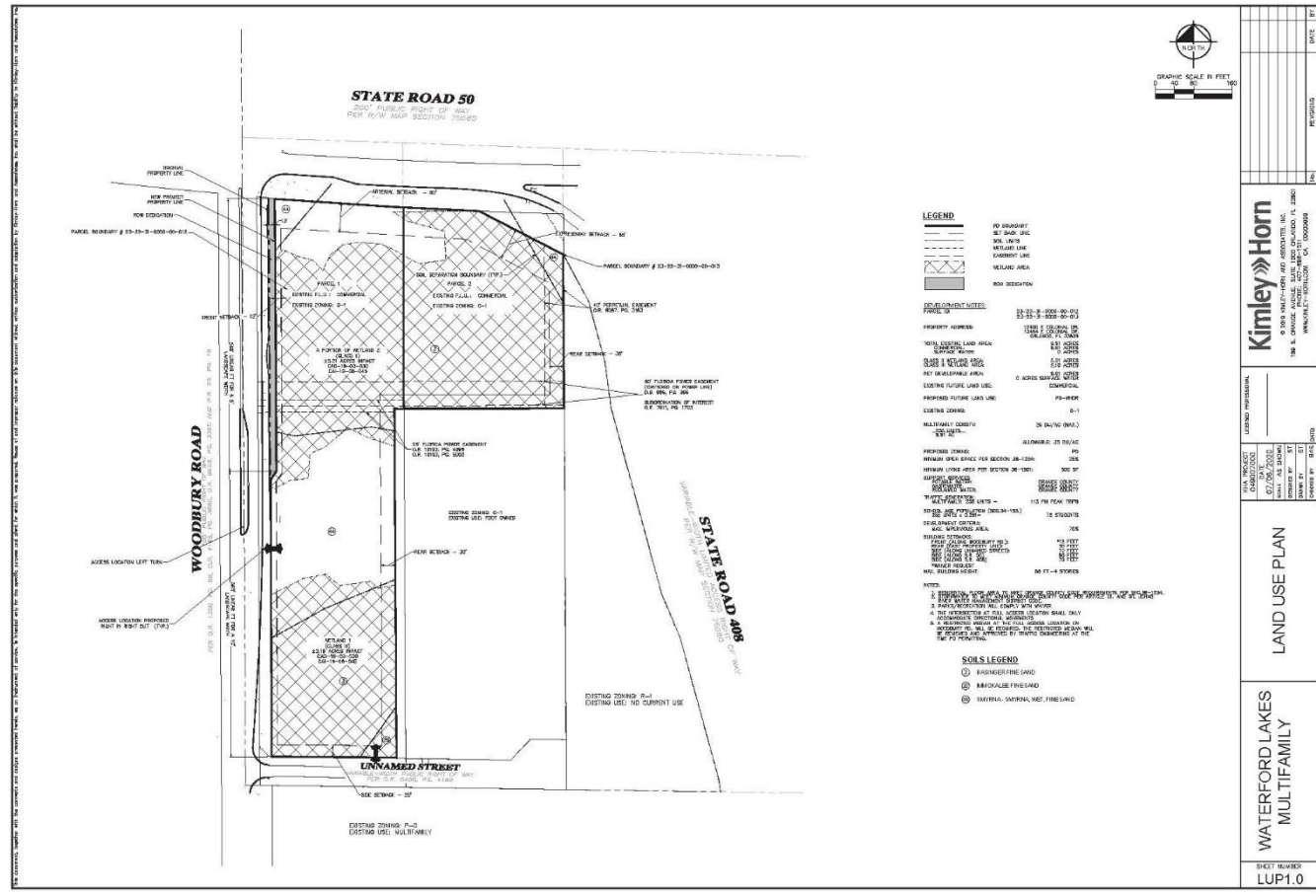
## Aerial Map

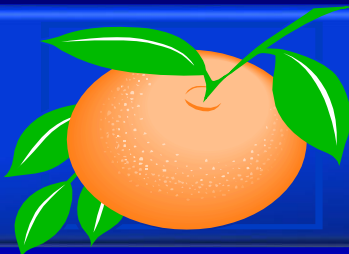






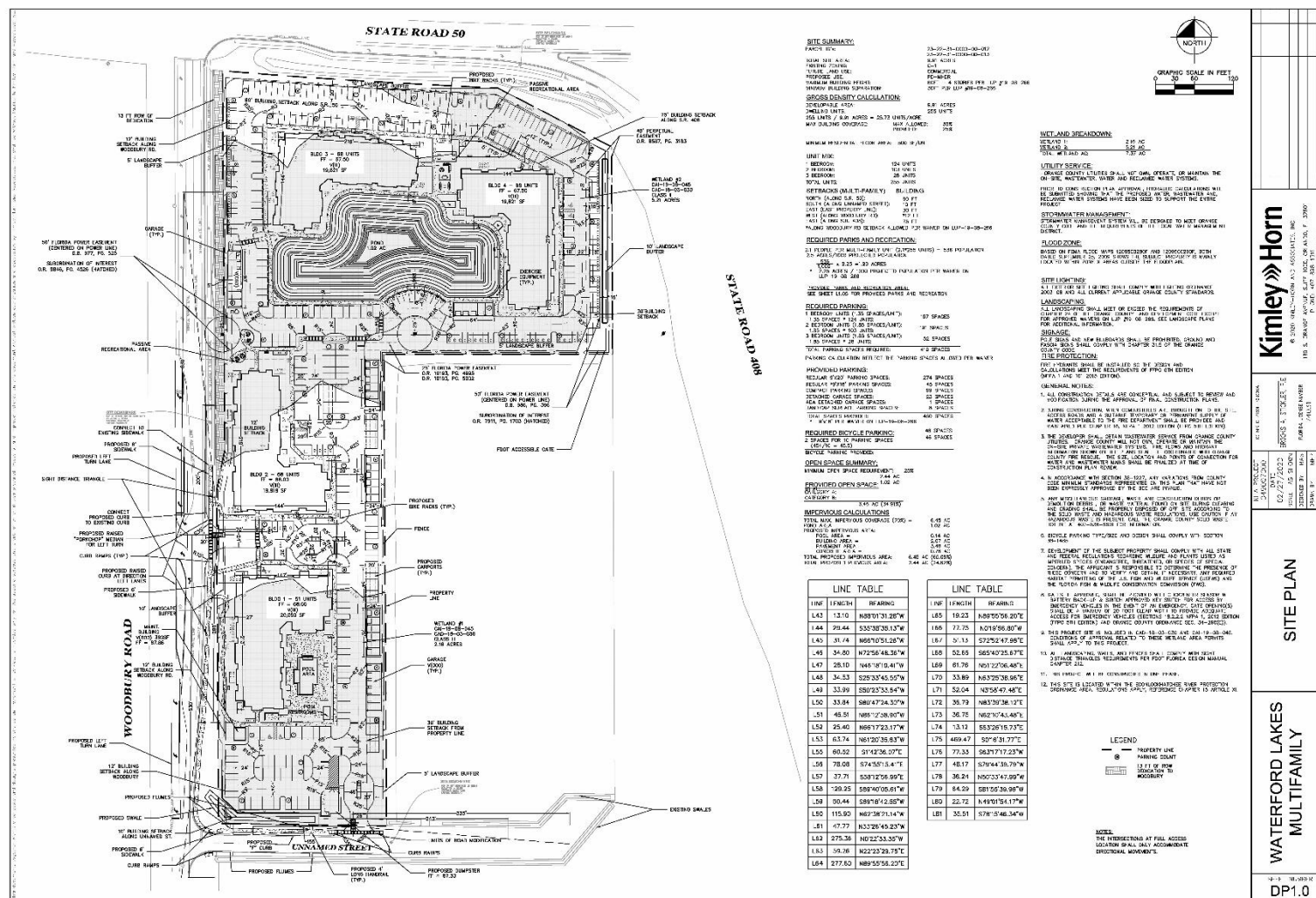
# Waterford Lakes Multi-Family Planned Development / Land Use Plan Overall Land Use Plan





# Waterford Lakes Multi-Family PD / Waterford Lakes Multi-Family Development Plan

## Overall Development Plan







# Action Requested

**Make a finding of consistency with the Comprehensive Plan (CP) and approve the substantial change to the Waterford Lakes Multi-Family Planned Development / Land Use Plan (PD/LUP) dated “Received September 15, 2020”, subject to the conditions listed under the DRC Recommendation in the Staff Report; and**

**Make a finding of consistency with the Comprehensive Plan and approve the Waterford Lakes Multi-Family PD / Waterford Lakes Multi-Family DP dated “Received August 17, 2020”, subject to the conditions listed under the DRC Recommendation in the Staff Report; and**

**Approve Right-of-Way and Proportionate Share Agreement for Waterford Lakes Apartments (Consent Agenda item G.4)**

**District 4**



## New DP COA #22

*22. Prior to site construction plan approval, the Developer shall conduct a MUTCD Traffic Signal Warrant Study for the intersection of Woodbury Rd. with the southernmost access Unnamed Road. The study shall be based on Opening Date traffic data and on Design Year Traffic Projections. If warranted, Developer shall design and construct the temporary traffic signal in conjunction with all other off-site Woodbury Rd. proposed improvements.*

*Board of County Commissioners*

# Public Hearings

**December 1, 2020**