

Board of County Commissioners

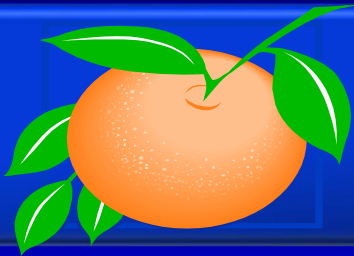
Public Hearings

March 9, 2021

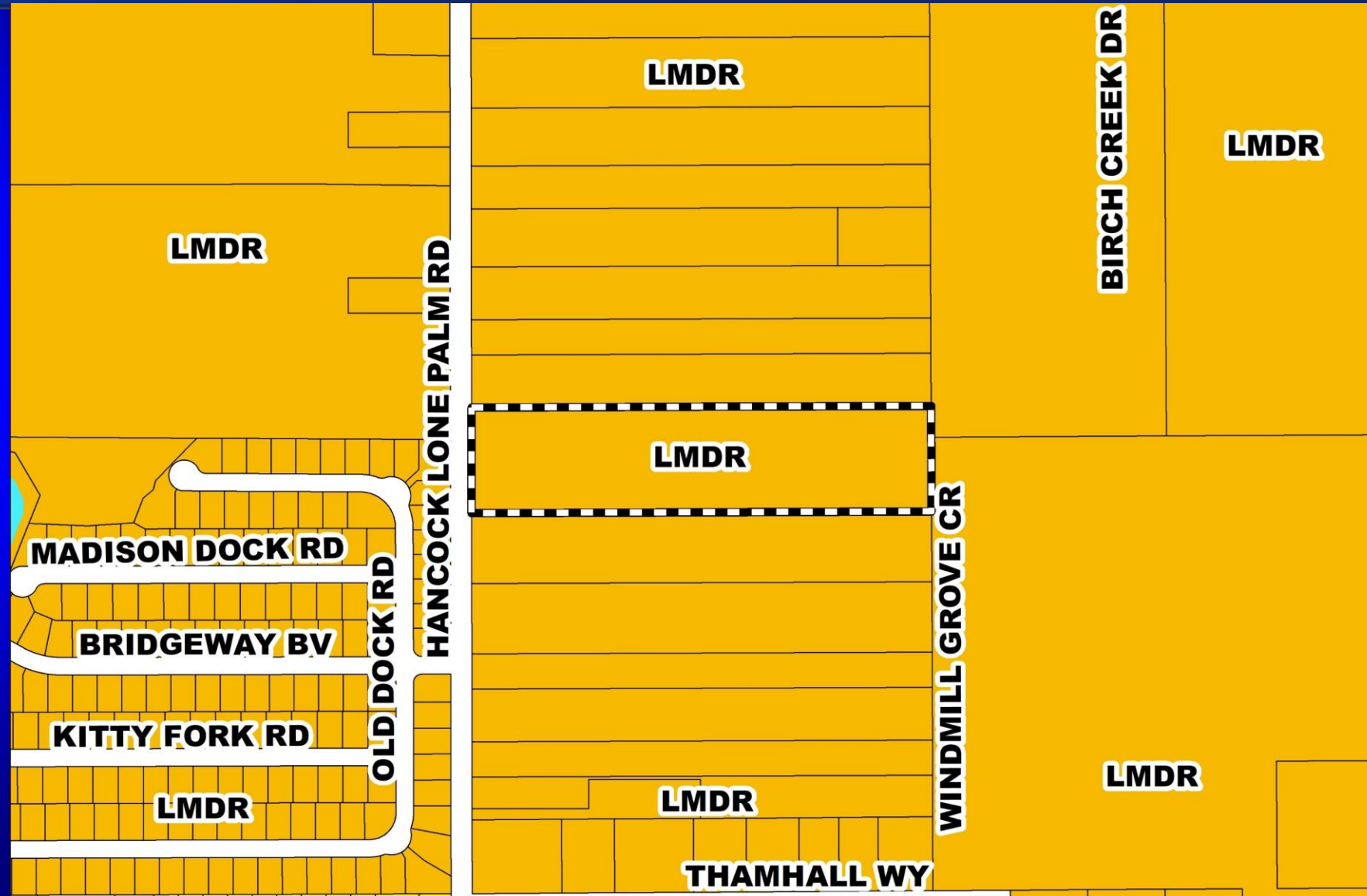


Lone Palm PD / Lone Palm Preliminary Subdivision Plan

Case:	PSP-20-06-154
Project Name:	Lone Palm PD / Lone Palm PSP
Applicant:	David Schmitt, Dave Schmitt Engineering, Inc.
Districts:	4
Acreage:	9.01 gross acres
Location:	Generally located south of E. Colonial Drive and east of Hancock Lone Palm Road
Request:	To subdivide 9.01 acres in order to construct 37 detached single-family residential dwelling units.

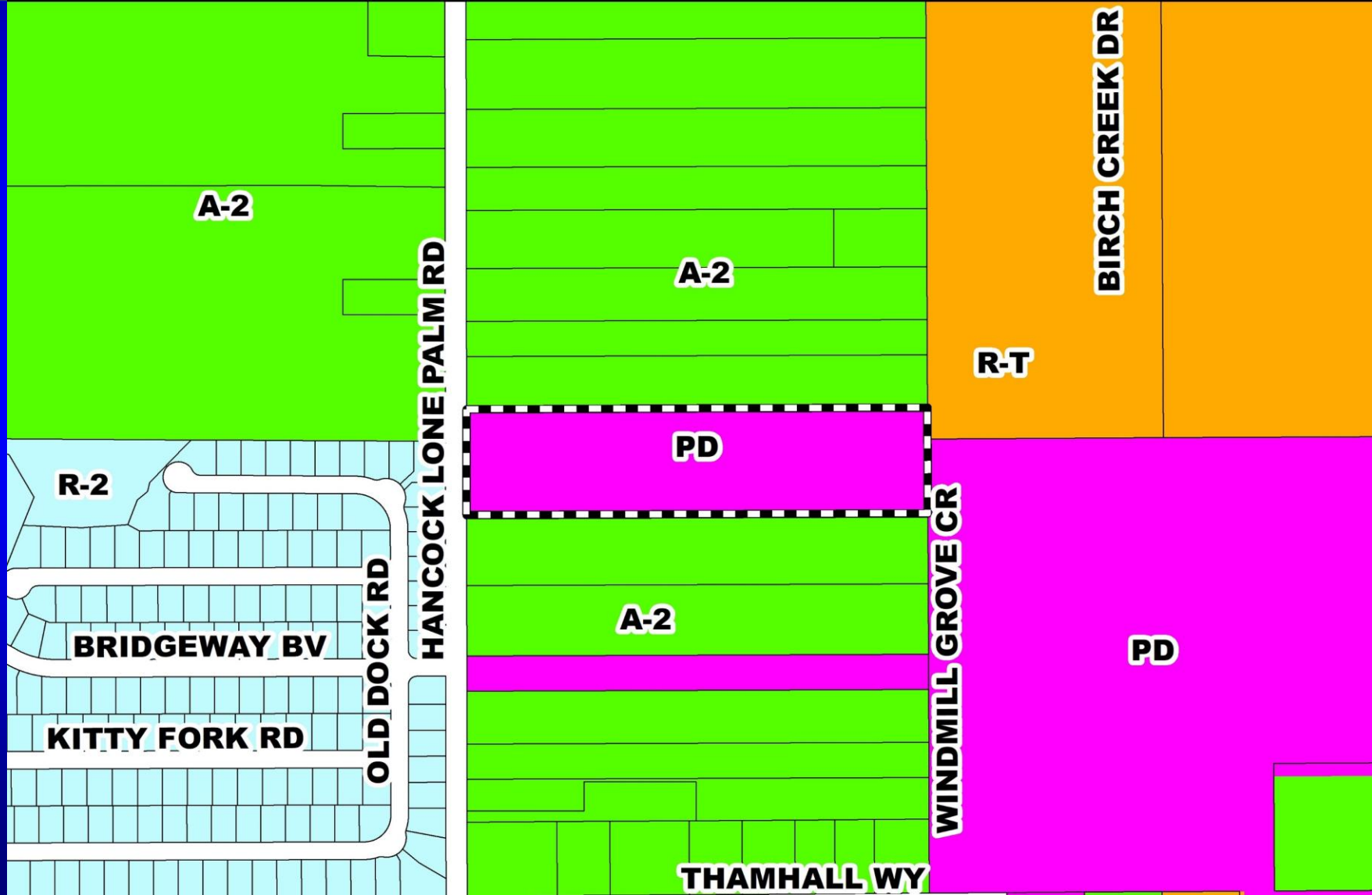


Lone Palm PD / Lone Palm Preliminary Subdivision Plan Future Land Use Map



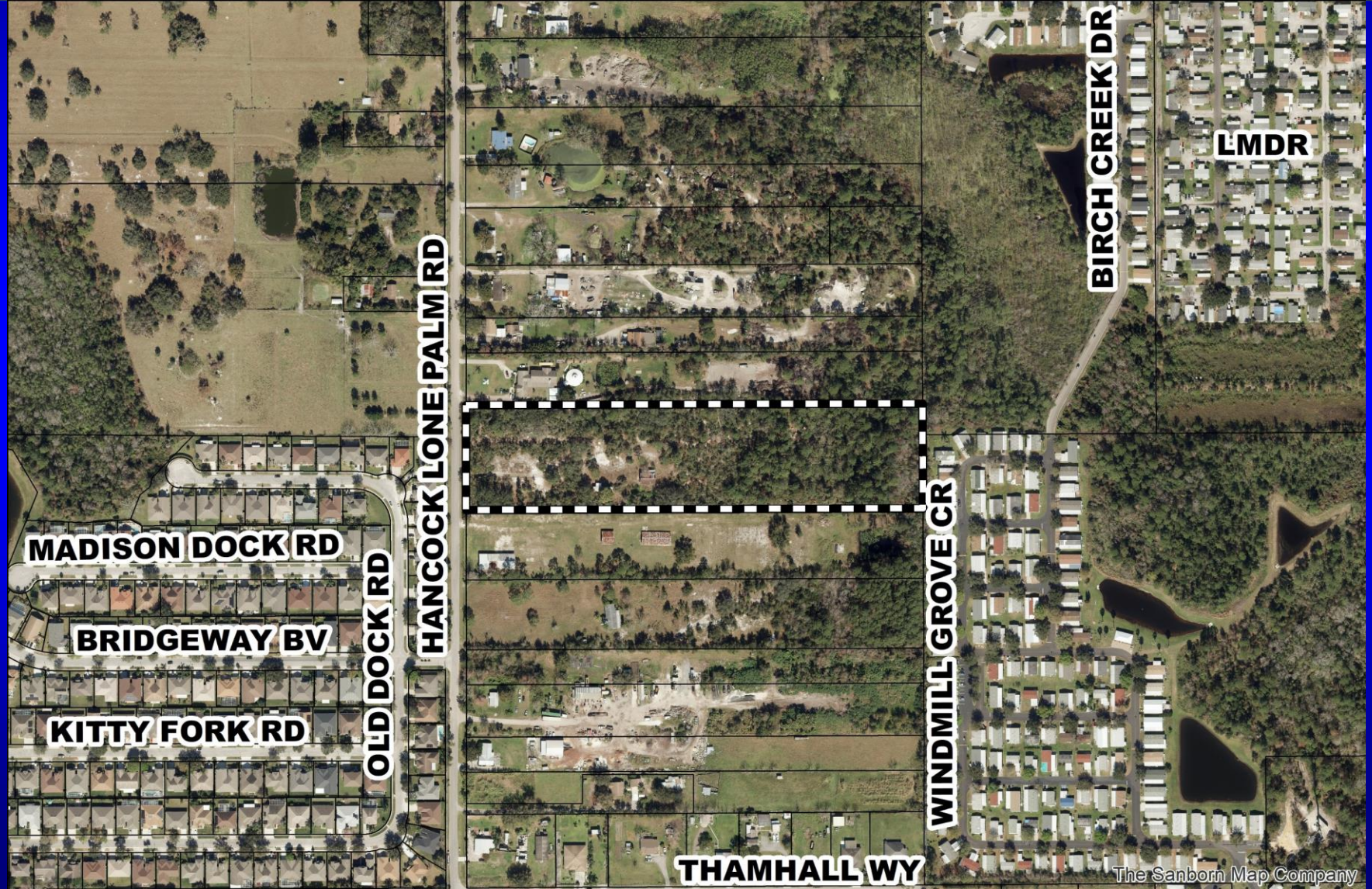


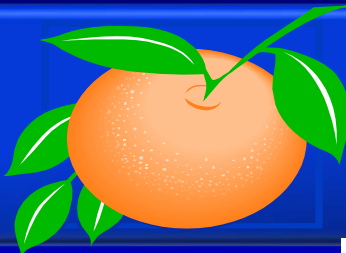
Lone Palm PD / Lone Palm Preliminary Subdivision Plan Zoning Map





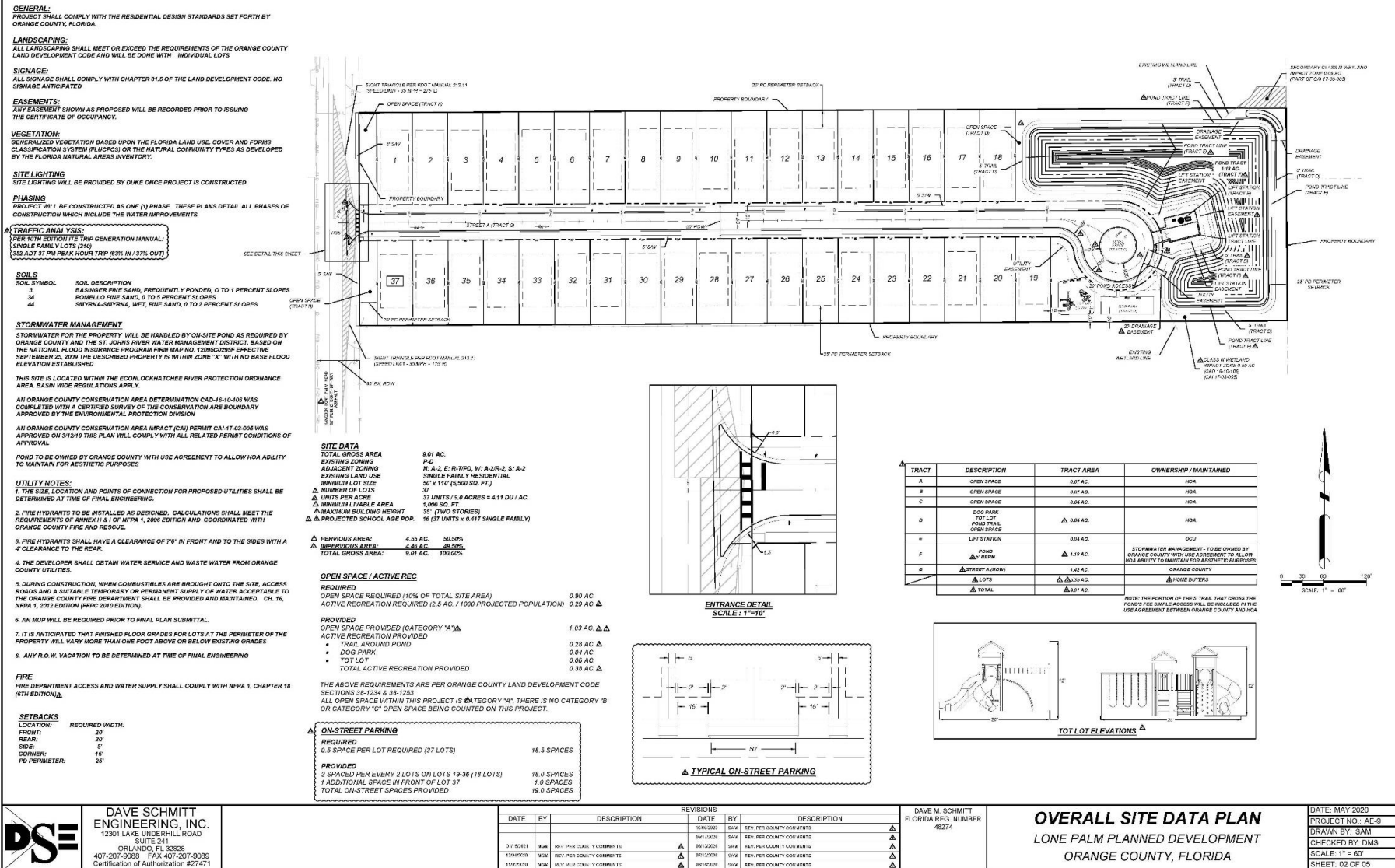
Lone Palm PD / Lone Palm Preliminary Subdivision Plan Aerial Map





Lone Palm PD / Lone Palm Preliminary Subdivision Plan

Overall Preliminary Subdivision Plan





Action Requested

Make a finding of consistency with the Comprehensive Plan and approve the Lone Palm PD / Lone Palm PSP dated “Received January 21, 2021”, subject to the conditions listed under the DRC Recommendation in the Staff Report.

District 4



Horizon Vue Planned Development / Land Use Plan

Case: LUP-20-06-152

Project Name: Horizon Vue PD / UNP

Applicant: Kathy Hattaway, Poulos & Bennett, LLC

District: 1

Acreage: 24.37 gross acres

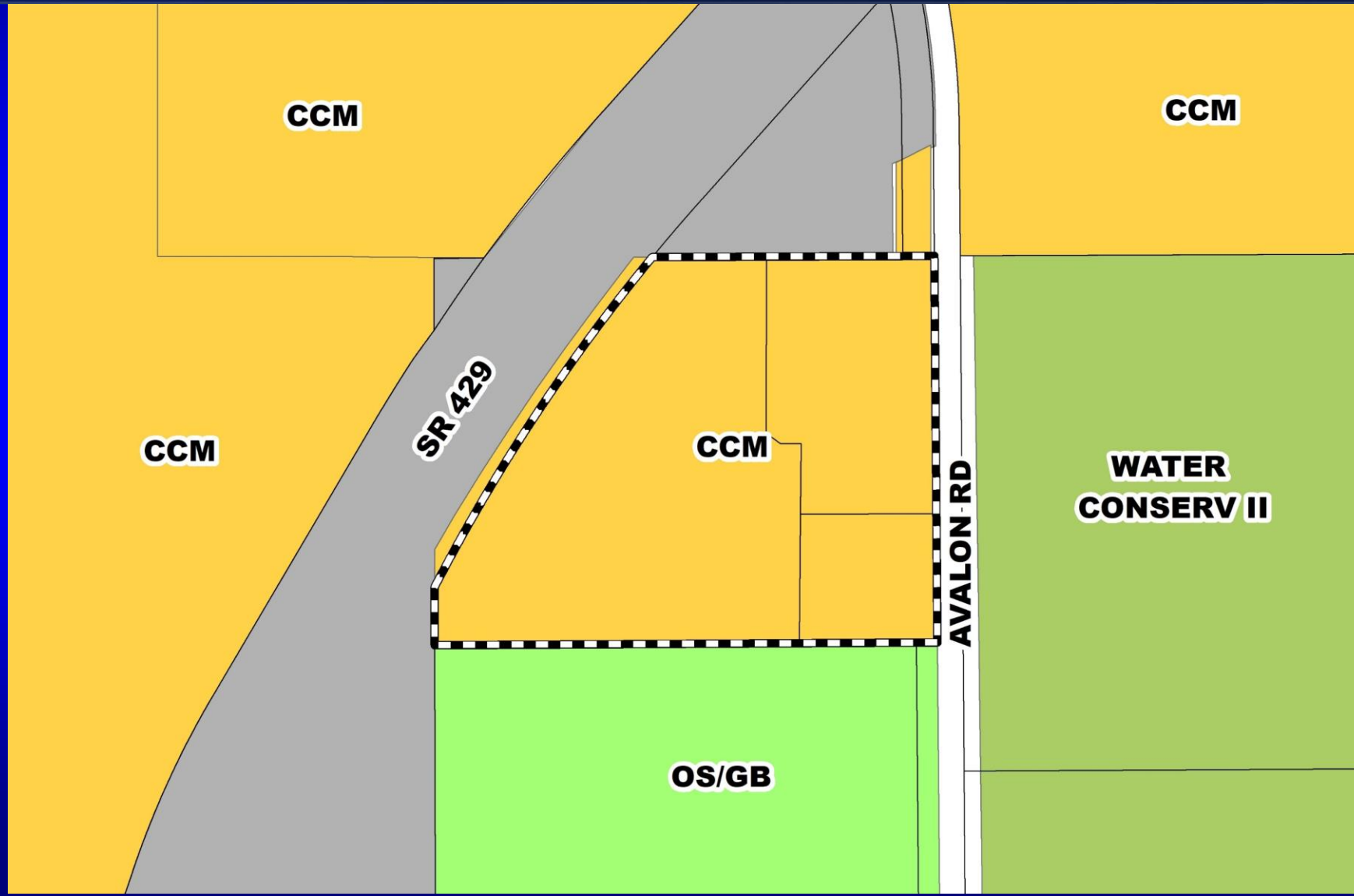
Location: Generally located north of Schofield Road and west of Avalon Road, within the Horizon West Town Center.

Request: To rezone two (2) parcels containing 24.37 gross acres from A-1 to PD, in order to construct 270 multi-family dwelling units, a 15,000 square foot daycare, 15,000 square feet of retail, 15,000 square feet of medical office, a 4,400 square foot restaurant, and a 125 room hotel. No waivers are associated with this request.



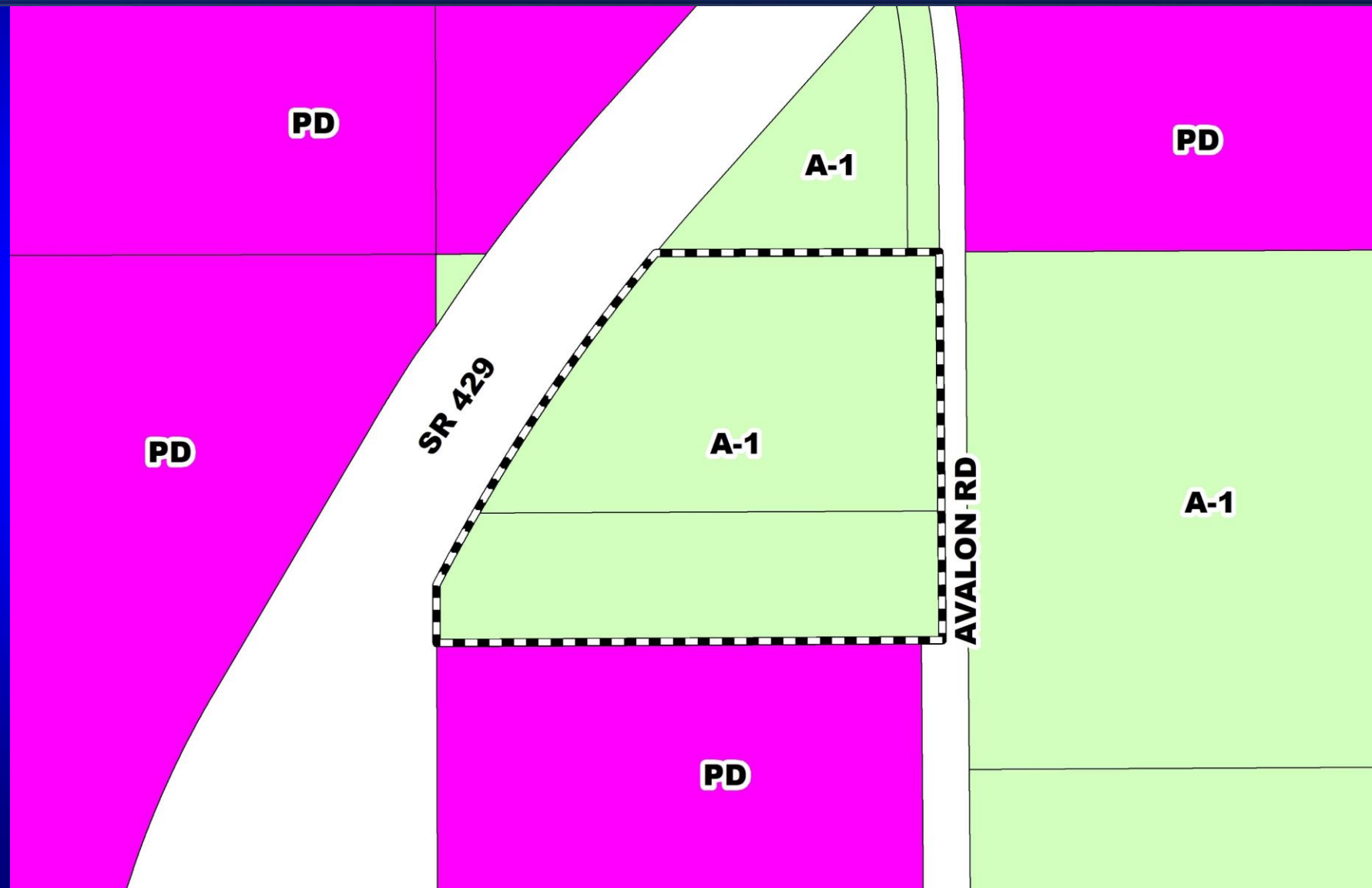
Horizon Vue Planned Development / Land Use Plan

Future Land Use Map



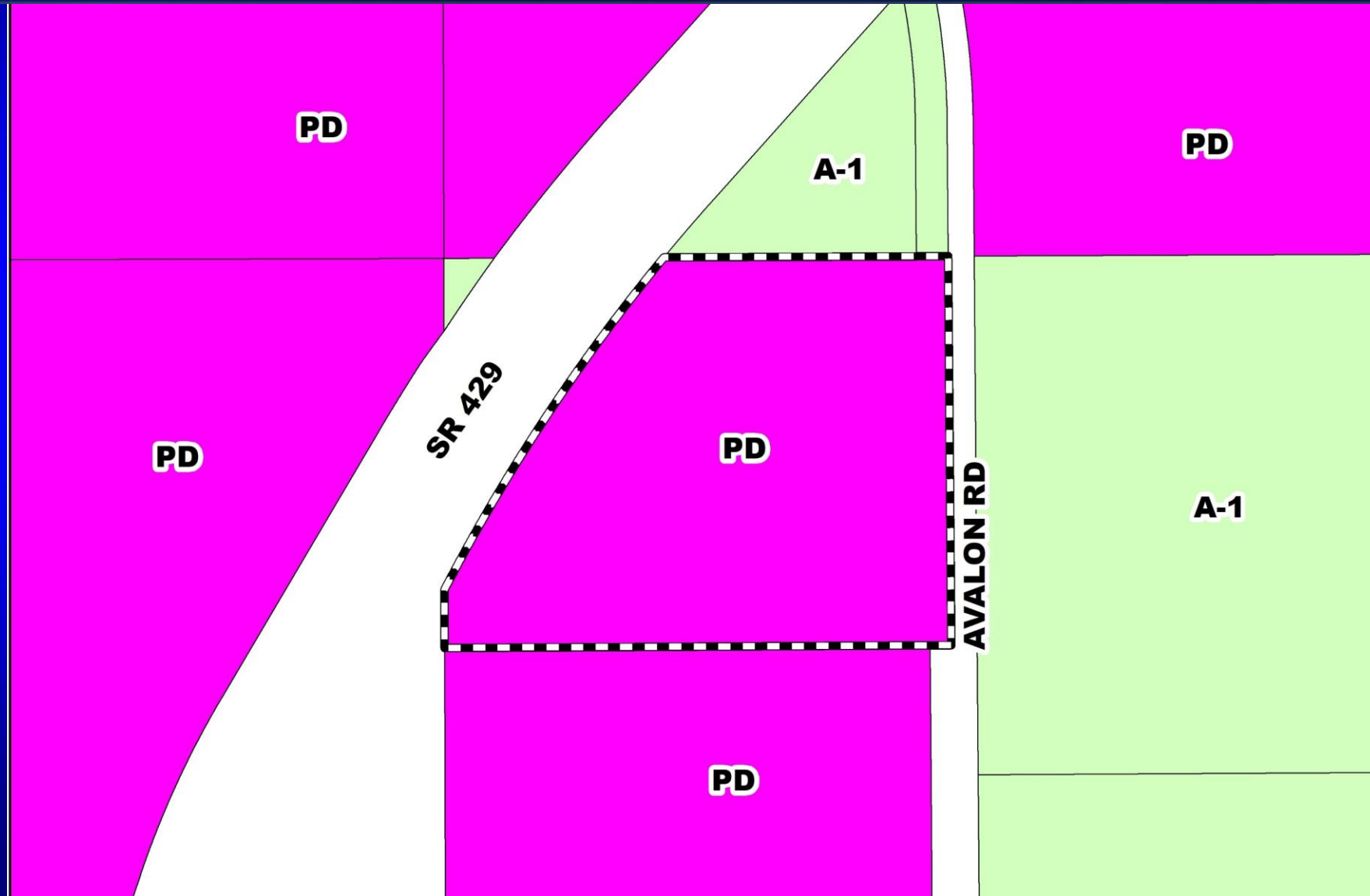


Horizon Vue Planned Development / Land Use Plan Zoning Map





Horizon Vue Planned Development / Land Use Plan Proposed Zoning Map





Horizon Vue Planned Development / Land Use Plan Aerial Map





Action Requested

Make a finding of consistency with the Comprehensive Plan (CP) and approve the Horizon Vue Planned Development / Land Use Plan (PD/LUP) dated “Received October 14, 2020”, subject to the conditions listed under the PZC Recommendation in the Staff Report.

And

Approve Consent Item F.5.

District 1

Board of County Commissioners

Public Hearings

March 9, 2021